



Smart LED String Lights User Guide

Please read this guide carefully before using the string light

Shenzhen Langma Technology Limited

8. Bluetooth Control: After pairing your string lights and app, turn off your router and phone's WIFI, wait for around 3mins, you can control string lights by Bluetooth now. This is a control option for in case of your WIFI is gone.
9.Clear pairing: fast press ON/OFF 3 times on the Power Supply.

step 3---INSTALLING MULTIPLE STRING LIGHTS

Extend the length of our lights by connecting more than one strand together to form continuous string up to 500ft. Simply follow the above installation steps, making sure each connection between strands is secure and that the end female receptacle is securely covered using the receptacle cover.

NOTE: Do not extend your string lights by connecting other suppliers'.

step 4---REMOVING STRING LIGHTS

- 1.Always unplug string lights from their receptacle prior to removing.
- 2.Carefully remove each light individually from the mounting hardware.
- 3.Store lights in a dry location.

Thanks for your recent purchase of our Smart LED String Lights. Our Smart LED String Lights are designed to provide lighting for life with warm white ambiance as well as Simply controlling. Purchase additional lights to form one continuous string up to 500ft! IMPORTANT: Before installation, please read all the warning statements included at the bottom of these instructions. In order to ensure proper installation, please follow each step below.

step 1---INITIAL SETUP

- 1.Carefully unpack String lights from box. Remove the wire ties. See warning on labels.
 - 2.When installing string lights outside, a Ground Fault Circuit Interrupter (GFCI) receptacle should be used.
- IMPORANT: Unplug the String Lights prior to mounting**

step 2---INSTALLING STRING LIGHTS

- 1.IMPORTANT: Only mount string light to a solid support structure as joists, beams, studs or other solid mounting surface. Each string light is designed with lights hanging downward. Hardware options include screws, nails, zip ties, hooks and more (not included).
2. Mount power supply and connect to string light plug.
3. Guide wires in compliance with local electrical and building codes may also be used to support string lights.
4. Once appropriate GFCI outlet location, mounting surface and hardware are determined, mount your string lights.



①

How to control the string lights by Remote controller?

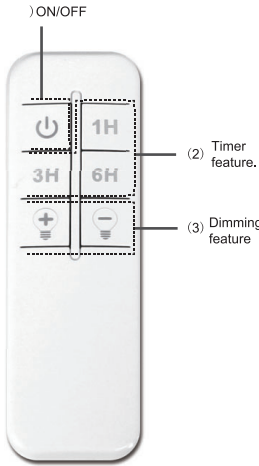
1. Locate the remote. Remove the back cover of the remote and insert two AAA batteries (not included) into the empty compartment. Be sure to note polarity, not mix old and new batteries. Firmly replace the back cover.
2. To power on your string lights, press the ON/OFF button located at the top of the remote.

NOTE: Keep remote indoors when not being used, Remote is not waterproof.

3. Now that your lights are installed powered on, take time to explore the following settings that are programmable via your remote:

- (1) .ON/OFF
- (2) .Timer feature: press 1H. the string light flash 1 time, 3H flash twice, 8H flash 3 times.
- (3) .Dimming feature: Brightness increase or decrease.

NOTE: String lights default matched to remote. Press ON/OFF three times for reset matching if needed.



5. When finished mounting, screw in bulbs, place the female receptacle cover firmly over the unused outlet and plug the male plug into the GFCI receptacle.

NOTE: Unplug the string lights prior to screw bulbs in.



6. Now that your lights are installed and powered on, take time to explore the following settings that are programmable via your smart phone APP:

NOTE: make sure your wifi is 2.4GHz and mobile bluetooth is opened. Download APP from scanning QR code of below or search Smart Life from app store.



IOS

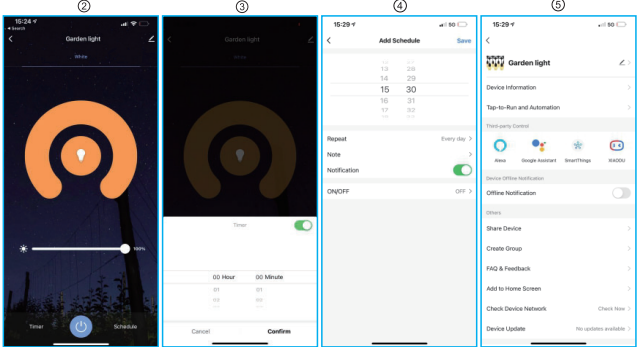
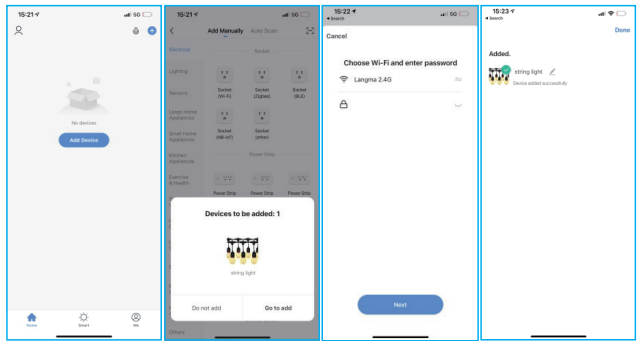


ANDROID



①

- ① Open Smart Life and create an account, log in.
- ② Press Add device or +.
- ③ The string light will pop up, go to add.
- ④ Input your WIFI name and Pass word.
- ⑤ Press next, next, next and Done.
- ⑥ App control on/off, Dimming brightness.
- ⑦ Timer Features.
- ⑧ Schedule features.
- ⑨ Voice Selection feature.

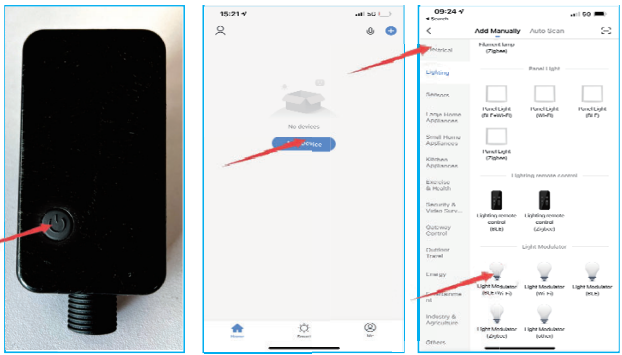


7. Add manually: power on your string lights and open smart life app:
① Press ON/OFF on the power supply 3 times as fast as you can, blue indicator is flashing.
② Press Add device or + on your app.
③ Choose Lighting menu, go to Light Modulator, press Light Modulator (BLE+Wi-Fi)
④ Repeat the above from 3 to 8 (same as Auto pairing)

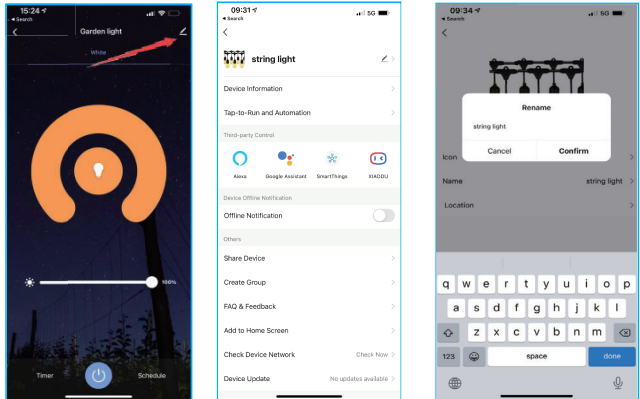
Made In China
Manufacturer: SHENZHEN LANGMA TECHNOLOGY LIMITED
R1001, SHUIE BUILDING, NO.384 OF 1ST GUSHU ROAD, XIXANG STREET, BAO'AN DISTRICT, SHENZHEN, CHINA
This BRIMAX product comes with 1 years limited warranty
Questions? please contact our consumer care at langma @langmacn.com, 0086-755-82580568

WARNING

RISK OF ELECTRIC SHOCK
RECEPTACLE OUTLETS USED FOR POWERING FOR USE ONLY ON GFCI PROTECTED CIRCUITS.
DO NOT SUBMERSE
DO NOT USE AROUND AQUARIUMS
Do NOT USE WITH EXTENSION CORD NEAR WATER OR WHERE WATER MAY ACCUMULATE
KEEP LAMPS AT LEAST 16 FEET FROM POOLS AND SPAS. KEEP PLUGS AND RECEPTACLES DRY
AVOID DAMAGE TO THE CORDS AND LAMP DURING INSTALLATION. PERIODICALLY INSPECT THE STRING LIGHTS FOR PHYSICAL DAMAGE OR OTHER DAMAGE CAUSED BY OUTDOOR EXPOSURE TO THE ELEMENTS.
REPLACE ANY DAMAGE BRIMAX STRING LIGHTS.
DO NOT INSTALL IN LOCATIONS WHERE STRING LIGHTS CAN BE STEPPED ON.
ENSURE STRING LIGHTS ARE UNPLUGGED FROM POWER DURING INSTALLATION.
STRING LIGHTS SHOULD BE INSTALLED OUT OF THE REACH OF CHILDREN OR NOT ALLOWING CHILDREN TO PLAY WITH THEM.
UL RECOMMENDS TESTING GFCI CIRCUITS AND RECEPTACLES EVERY MONTH TO ENSURE PROPER OPERATION. DO NOT OPERATE WITHOUT BULB SECURELY SCREWED IN.
RISK OF FIRE



NOTE: Never forget the pencil on APP'S right up corner, click it, you can customize your devices name, pair it to Alexa, google assistant etc.



④

STRING LIGHTS ARE DESIGNED TO BE MOUNTED WITH THEIR INDIVIDUAL KEYHOLE MOUNTING FEATURE, DO NOT MOUNT STRING LIGHTS BY USING THE MAIN ELECTRICAL CORD OR THE INDIVIDUAL DROP CORDS.
STRING LIGHTS ARE DESIGNED TO BE LINKED BY USING THEIR ELECTRICAL PLUGS AND RECEPTACLES TO A MAXIMUM DISTANCE OF 500FT. STRING LIGHTS INTERCONNECTING RECEPTACLES ARE INTENDED ONLY FOR THE LINKING OF COMPATIBLE STRING LIGHT STRINGS. DO NOT USE STRING RECEPTACLES FOR ANY OTHER ELECTRICAL PURPOSE.
DO NOT ALLOW THE LED LAMP ASSEMBLIES TO BE IN CONTACT WITH COMBUSTIBLE MATERIALS. LED LAMP ASSEMBLIES SHOULD HANG FREELY AND NOT BE SUSCEPTIBLE TO REPETITIVE DAMAGE CAUSED BY ENVIRONMENTAL CONDITIONS SUCH AS WIND, RAIN, AND ICE. NOT INTENDED FOR INSTALLATION IN CEILINGS, SOFFITS, CABINET, ATTICS, OR OTHER ENCLOSED APACES.

FC IP44



Made in China

⑤

⑥

⑦

⑧

FCC Warning

This device complies with part 15 of the FCC rules. Operation is subject to the following two conditions: (1) this device may not cause harmful interference, and (2) this device must accept any interference received, including interference that may cause undesired operation.

Changes or modifications not expressly approved by the party responsible for compliance could void the user's authority to operate the equipment.

NOTE: This equipment has been tested and found to comply with the limits for a Class B digital device, pursuant to part 15 of the FCC Rules. These limits are designed to provide reasonable protection against harmful interference in a residential installation. This equipment generates uses and can radiate radio frequency energy and, if not installed and used in accordance with the instructions, may cause harmful interference to radio communications. However, there is no guarantee that interference will not occur in a particular installation. If this equipment does cause harmful interference to radio or television reception, which can be determined by turning the equipment off and on, the user is encouraged to try to correct the interference by one or more of the following measures:

- Reorient or relocate the receiving antenna.
- Increase the separation between the equipment and receiver.
- Connect the equipment into an outlet on a circuit different from that to which the receiver is connected.
- Consult the dealer or an experienced radio/TV technician for help.

Radiation Exposure Statement

This equipment complies with FCC radiation exposure limits set forth for an uncontrolled environment. This equipment should be installed and operated with minimum distance 20cm between the radiator and your body.