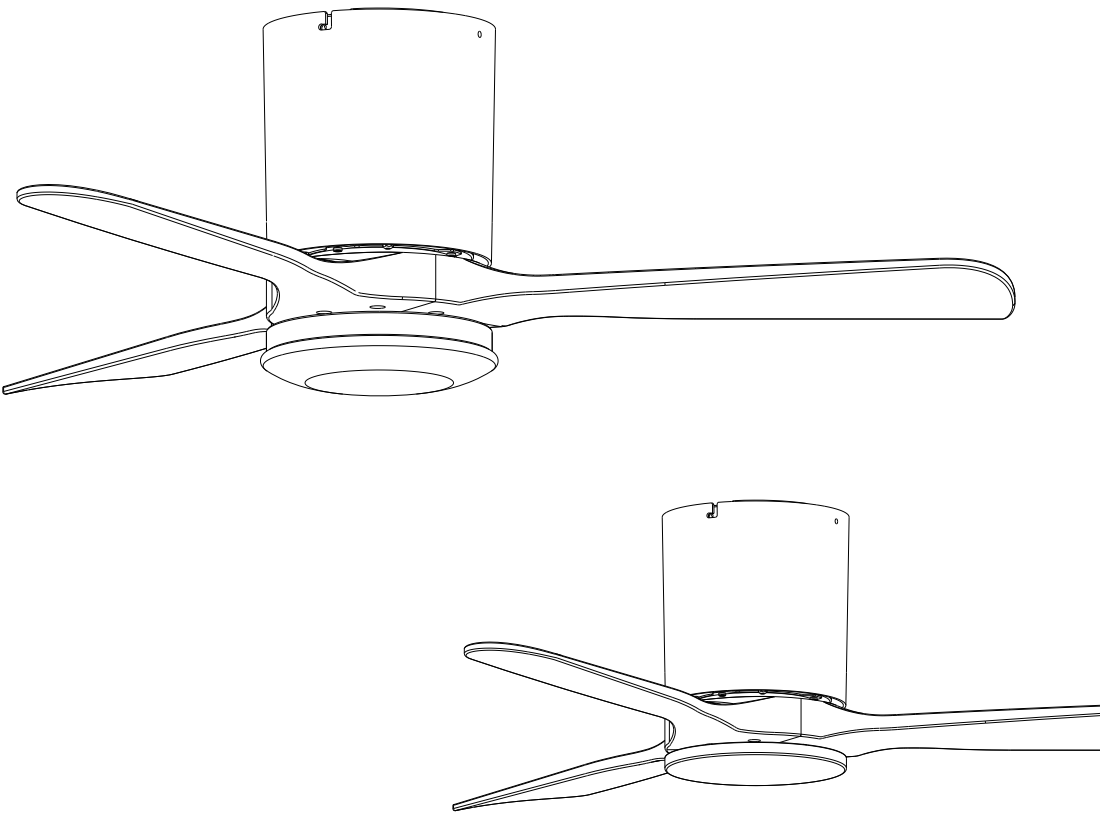


JZSM216 中性 木叶吸顶扇加装接驳轴 b26 b06
尺寸：296x210mm 12P 两面印刷 颜色：黑色 材质：100克书写纸

Installation Manual



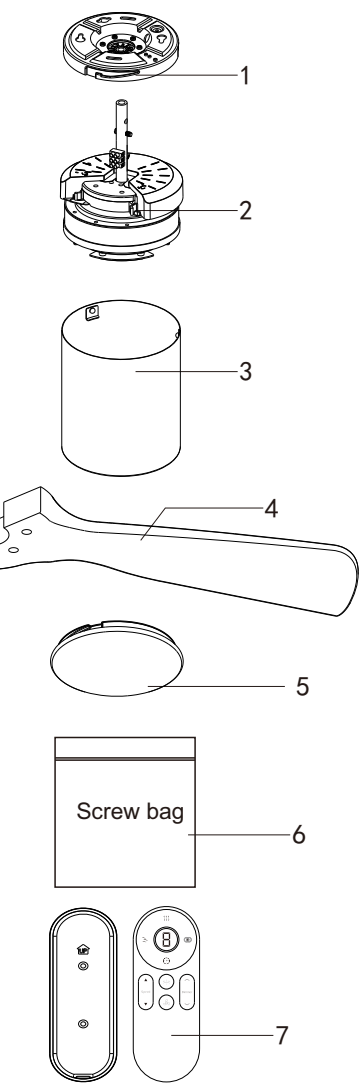
正面

底面

FCC Statement
This device complies with Part 15 of the FCC Rules. Operation is subject to the following two conditions:
(1) This device may not cause harmful interference.
(2) This device must accept any interference received, including interference that may cause undesired operation.
2.Changes or modifications not expressly approved by the party responsible for compliance could void the user's authority to operate the equipment.
Note: This equipment has been tested and found to comply with the limits for a class B digital device, pursuant to Part 15 of the FCC Rules. These limits are designed to provide reasonable protection against harmful interference in a residential installation.
This equipment generates uses and can radiate radio frequency energy and, if not installed and used in accordance with the instructions, may cause harmful interference to radio communications. However, there is no guarantee that interference will not occur in a particular installation. If this equipment does cause harmful interference to radio or television reception, which can be determined by turning the equipment off and on, the user is encouraged to try to correct the interference by one or more of the following measures:
• Reorient or relocate the receiving antenna.
• Increase the separation between the equipment and receiver.
• Connect the equipment into an outlet on a circuit different from that to which the receiver is connected.
• Consult the dealer or an experienced radio/TV technician for help.

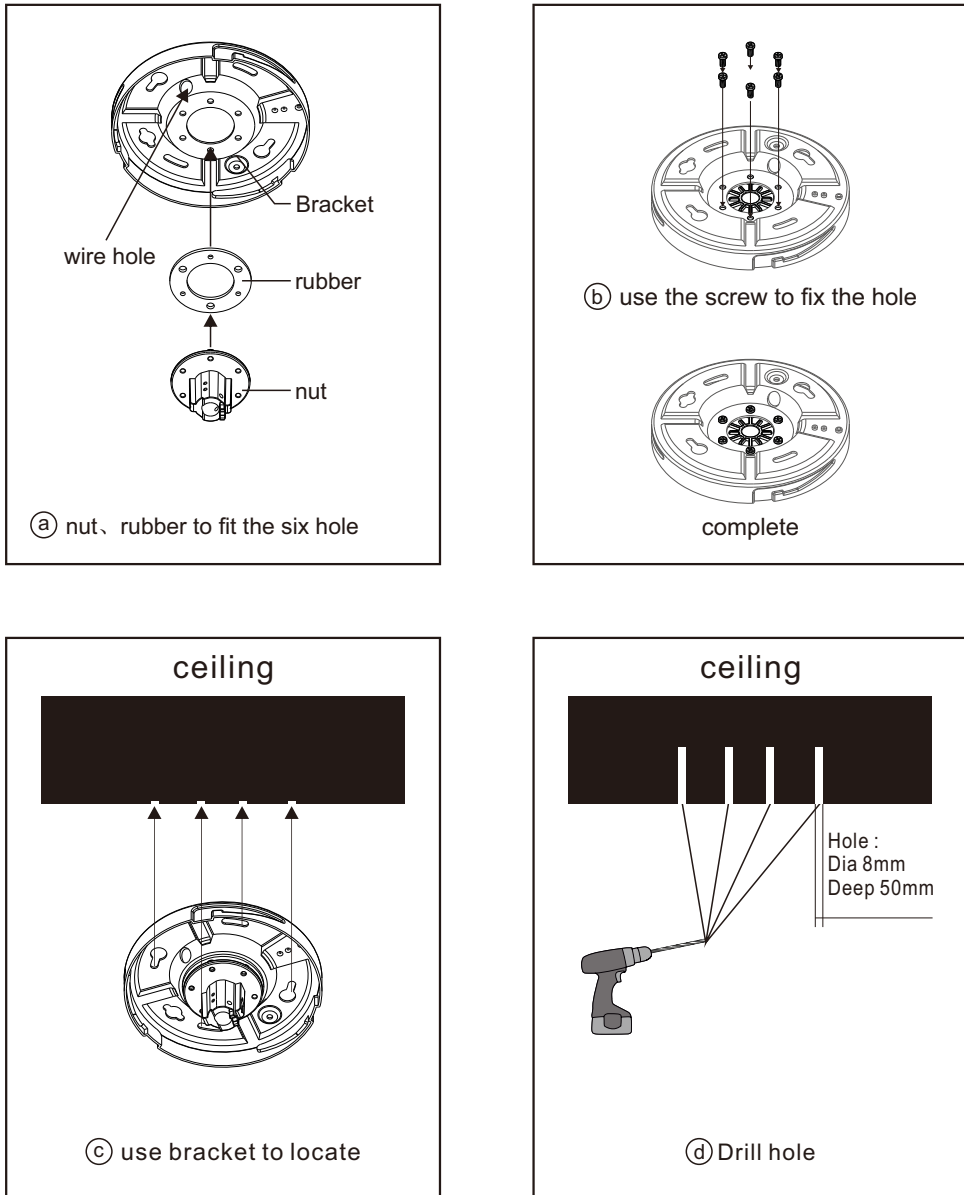
1. Spare part

Unpack and inspect fan carefully to be certain all the contents are include



Serial number	name	Pieces
1	Bracket ,Canopy	X1
2	Motor	X1
3	Top cover	X1
4	Blade	X3
5	lamp plate or Base plate	X1
6	Screw bag	X1
7	Emitter	X1

2. Mounting bracket installation

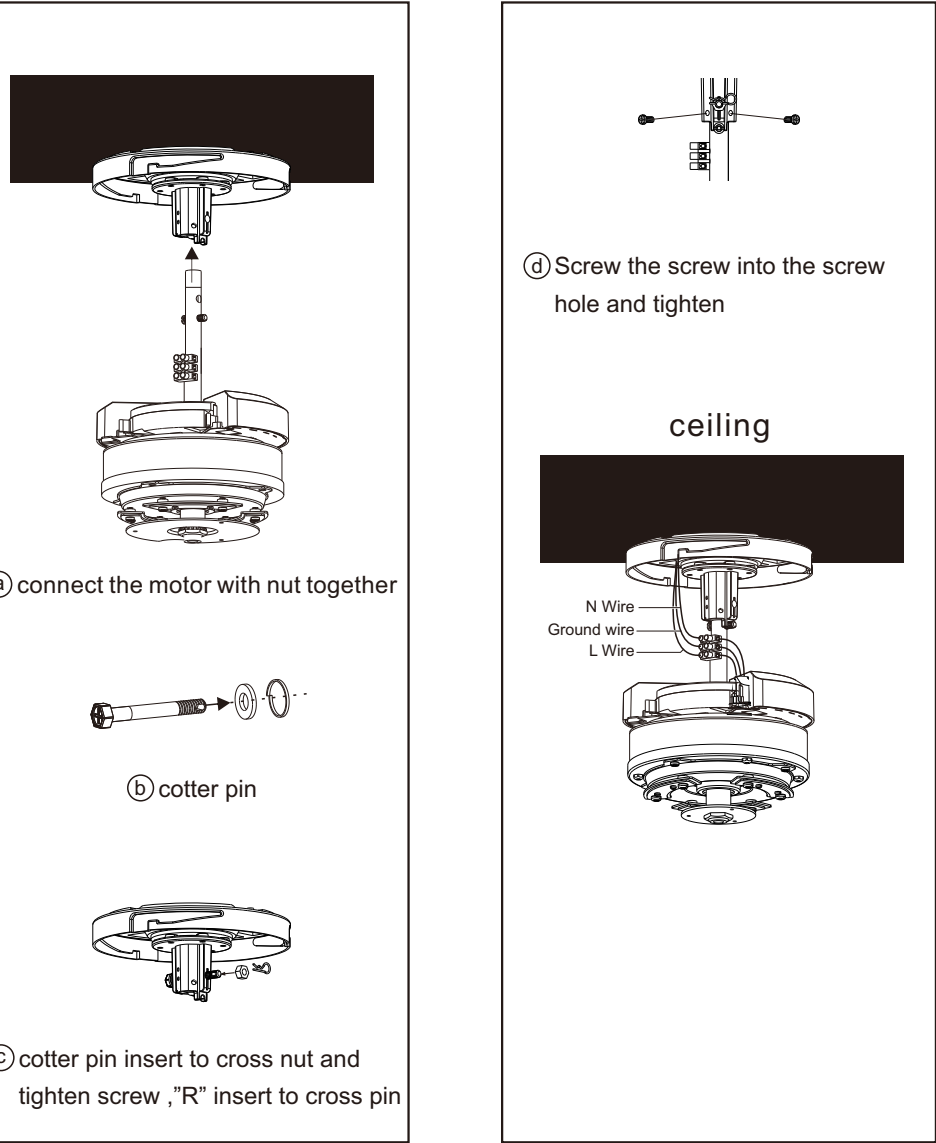


1

2

3. Fan installation guide

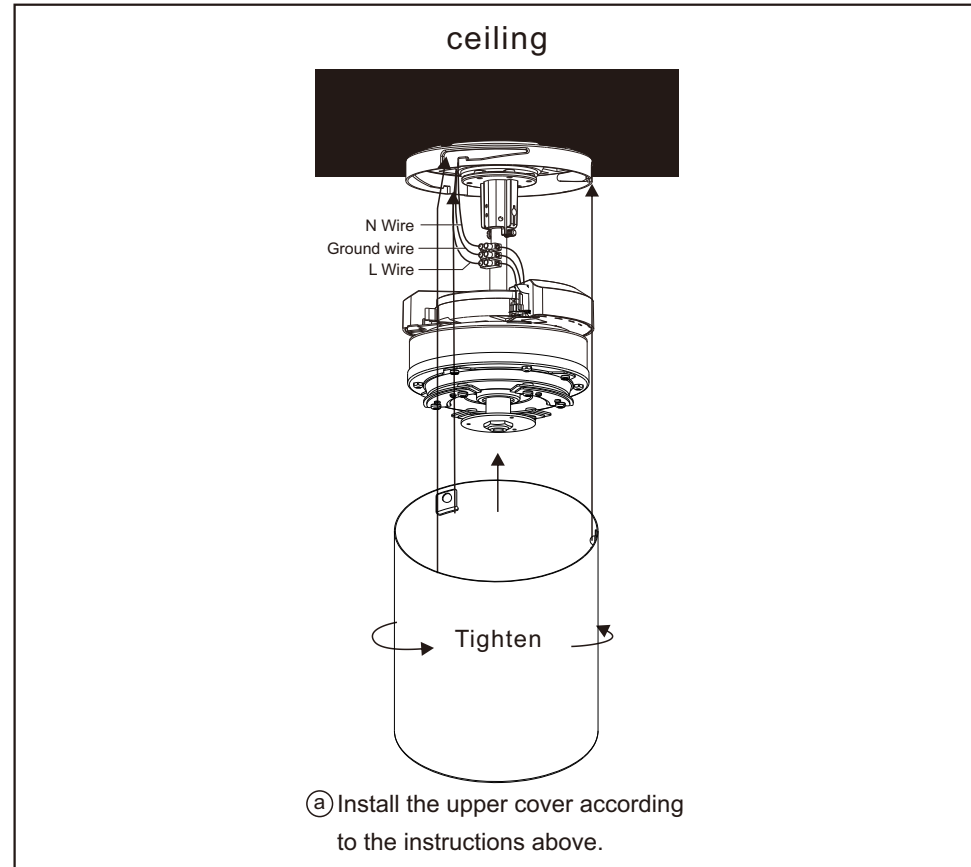
3.1 Canopy and Motor installation



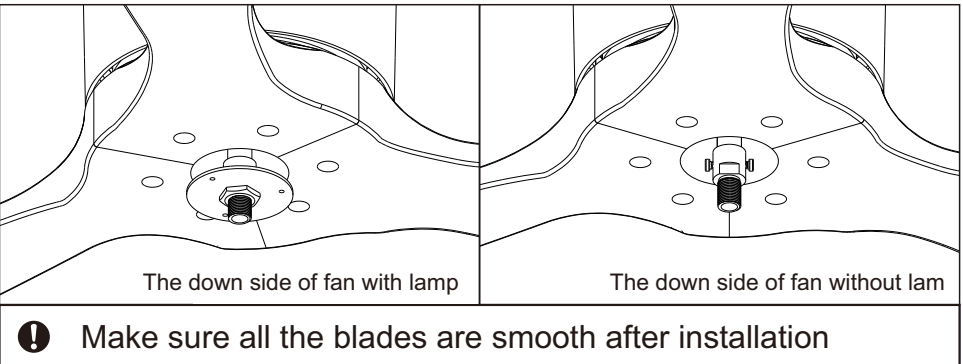
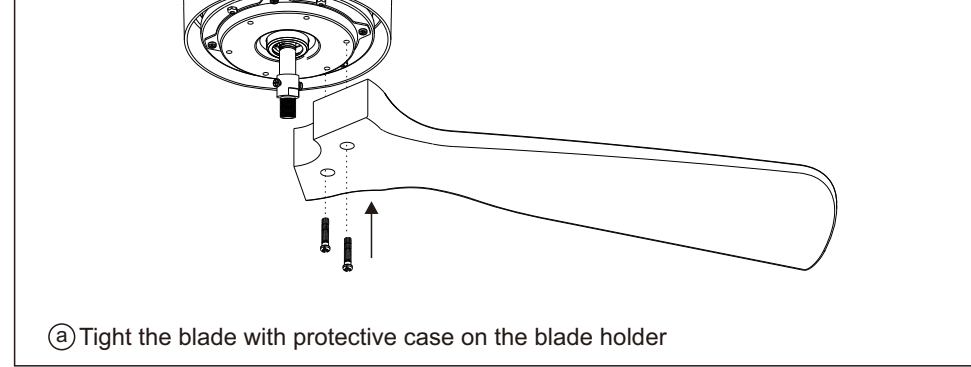
3

4

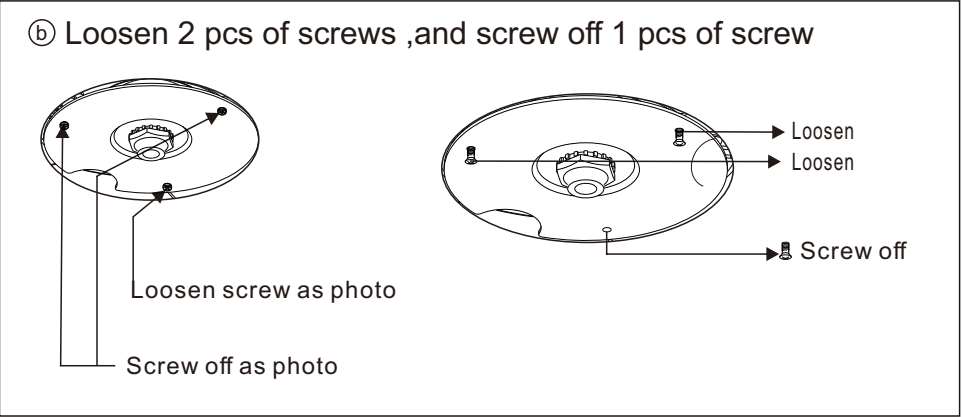
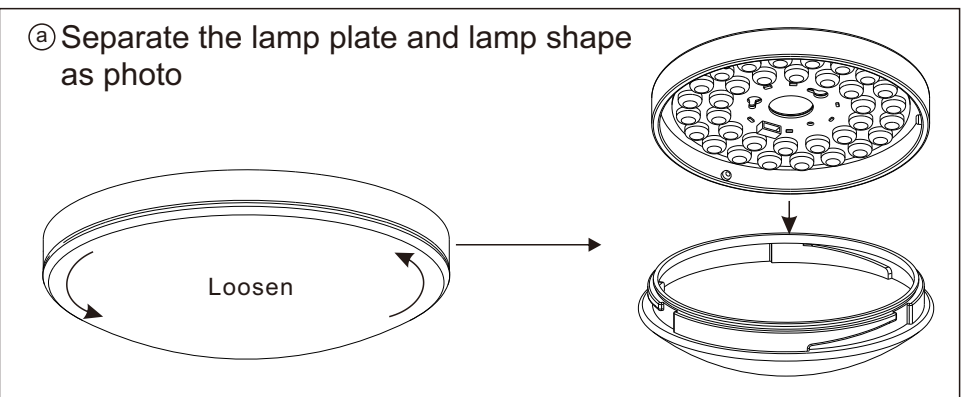
3.2 Upper cover installation



3.3 Fan blade installation

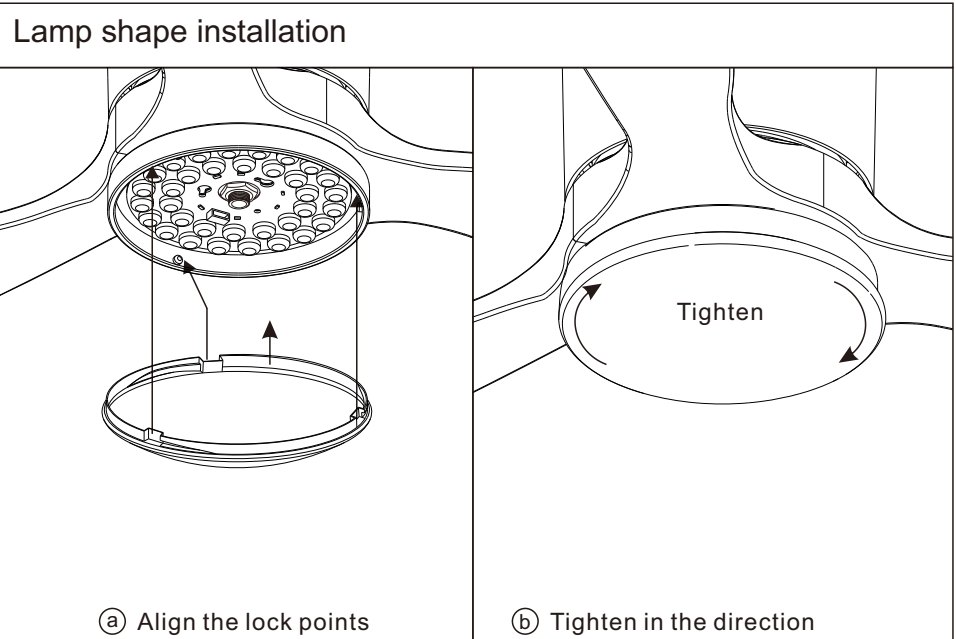
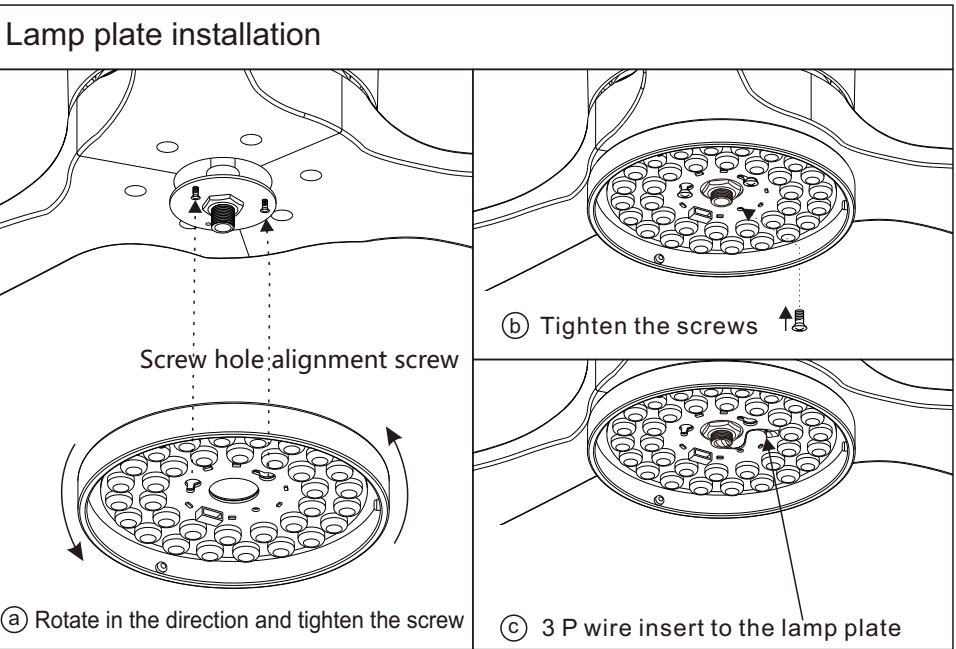


3.5 Lamp plate installation(Special step for the fan with lamp)



5

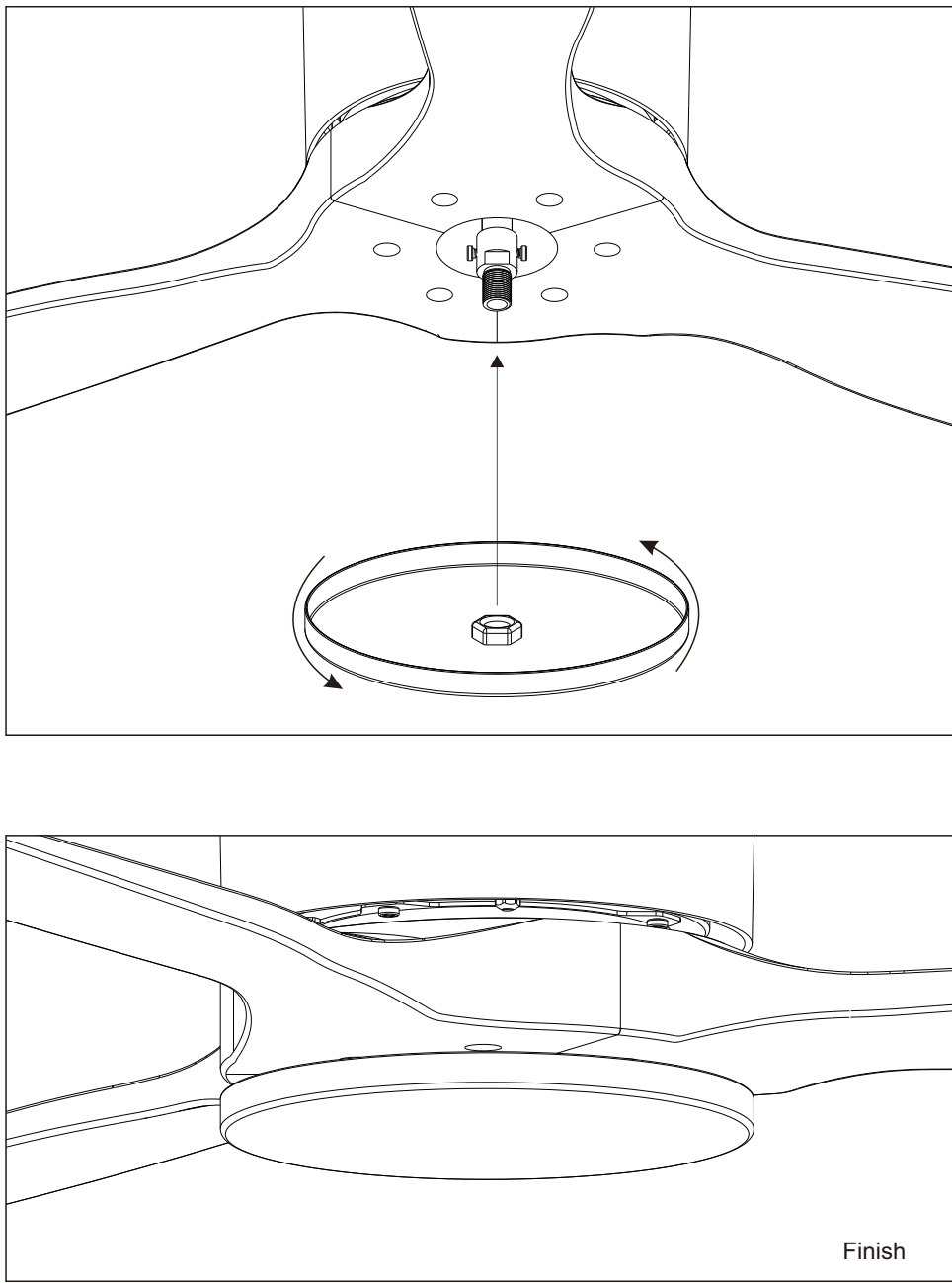
6



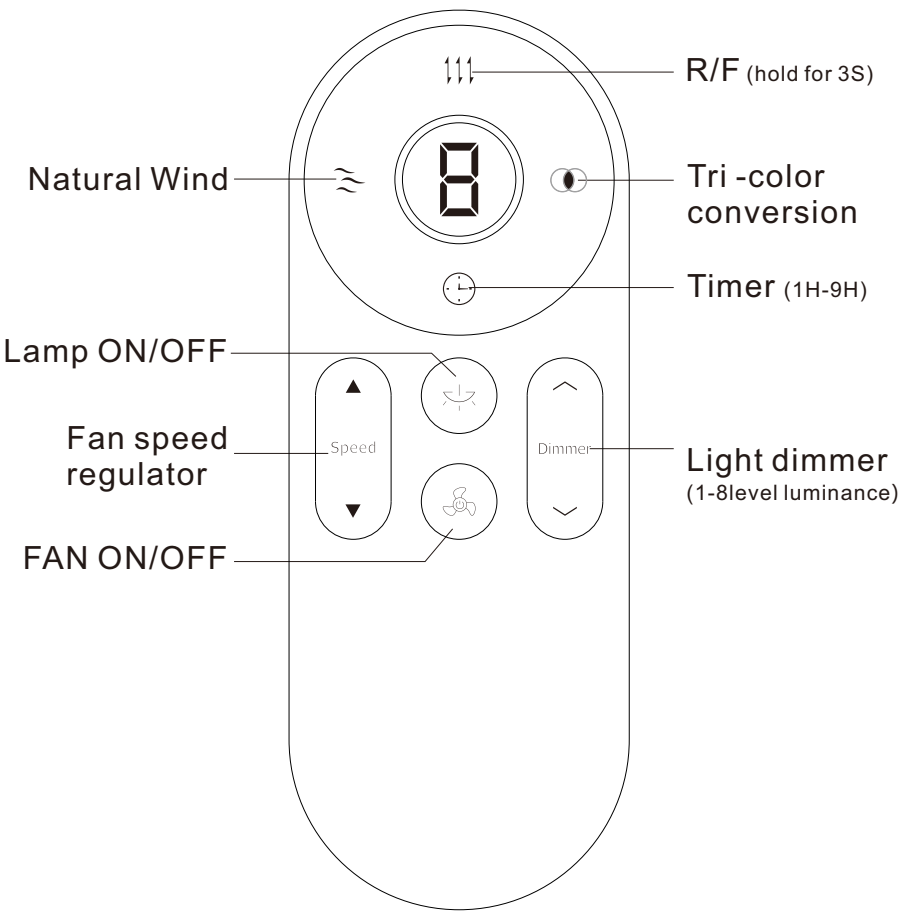
7

8

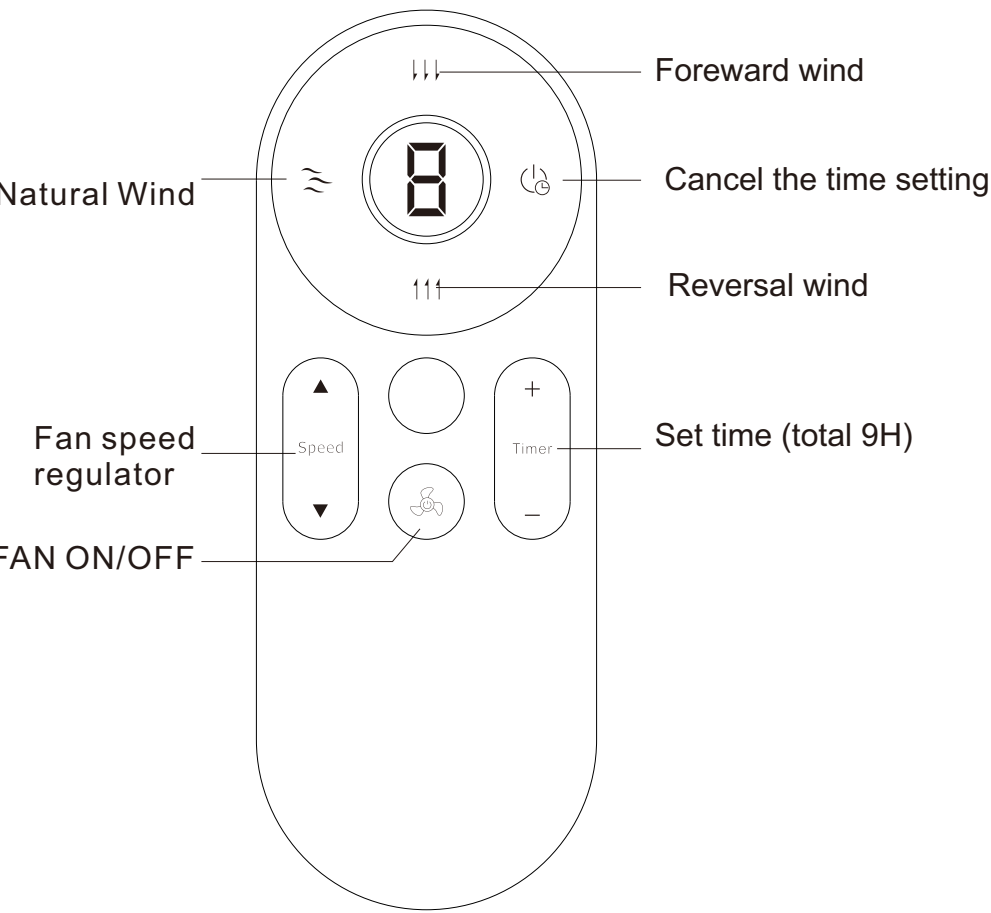
3.6 Base plate installation(Ignore this step if yours fan is with lamp)



4. Remote function



Pairing: press " " after power supply, short press 3 times and hold at least 3S at 4th press, a "beep" sound mean pairing success (All procedure need to be finished within 10)



Pairing: press " " after power supply, short press 3 times and hold at least 3S at 4th press, a "beep" sound mean pairing success (All procedure need to be finished within 10)

9

10

FCC Information to User

This equipment has been tested and found to comply with the limits for a Class B digital device, pursuant to Part 15 of the FCC Rules. These limits are designed to provide reasonable protection against harmful interference in a residential installation. This equipment generates, uses and can radiate radio frequency energy and, if not installed and used in accordance with the instructions, may cause harmful interference to radio communications. However, there is no guarantee that interference will not occur in a particular installation. If this equipment does cause harmful interference to radio or television reception, which can be determined by turning the equipment off and on, the user is encouraged to try to correct the interference by one of the following measures:

- Reorient or relocate the receiving antenna.
- Increase the separation between the equipment and receiver.
- Connect the equipment into an outlet on a circuit different from that to which the receiver is connected.
- Consult the dealer or an experienced radio/TV technician for help.

Caution

Modifications not expressly approved by the party responsible for compliance could void the user's authority to operate the equipment.

FCC Compliance Information : This device complies with Part 15 of the FCC Rules. Operation is subject to the following two conditions: (1) This device may not cause harmful interference, and (2) this device must accept any interference received, including interference that may cause undesired operation.

IMPORTANT NOTE:

FCC RF Radiation Exposure Statement:

This equipment complies with FCC RF radiation exposure limits set forth for an uncontrolled environment.