

Guangzhou Xaircraft Technology CO.,LTD.

TEST REPORT

SCOPE OF WORK

FCC TESTING– WM101

REPORT NUMBER

230403082SZN-003

ISSUE DATE

19 June 2023

[REVISED DATE]

[-----]

PAGES

67

DOCUMENT CONTROL NUMBER

FCC SAR_b

© 2017 INTERTEK



SAR TEST REPORT

For

Guangzhou Xaircraft Technology CO.,LTD.

Product Description: WLAN Model

FCC ID: 2A46G-WM101A

Model No.: WM101

Report No.: 230403082SZN-003

Issue Date: 19 June 2023

Prepared and Checked by:



Allen Qin
Engineer

Approved by:



Ryan Chen
Project Engineer
19 June 2023

- This report is for the exclusive use of Intertek's Client and is provided pursuant to the agreement between Intertek and its Client. Intertek's responsibility and liability are limited to the terms and conditions of the agreement. Intertek assumes no liability to any party, other than to the Client in accordance with the agreement, for any loss, expense or damage occasioned by the use of this report. Only the Client is authorized to copy or distribute this report. Any use of the Intertek name or one of its marks for the sale or advertisement of the tested material, product or service must first be approved in writing by Intertek. The observations and test results referenced from this report are relevant only to the sample tested. This report by itself does not imply that the material, product, or service is or has ever been under an Intertek certification program.
- The test report only allows to be revised only within the report defined retention period unless further standard or the requirement was noticed

Intertek Testing Services Shenzhen Ltd. Longhua Branch

101, 201, Building B, No. 308 Wuhe Avenue, Zhangkengjing Community, GuanHu Subdistrict, LongHua District, ShenZhen, P.R. China

Telephone: 86-755-8601 6288 Fax: 86-755-8601 6751

Table of Contents

1. GENERAL INFORMATION	3
2. STATEMENT OF COMPLIANCE	4
3. EQUIPMENT UNDER TEST (EUT) TECHNICAL DESCRIPTION	5
4. AUXILIARY EQUIPMENT DETAILS	6
5. TEST FACILITY	6
6. GUIDANCE STANDARD	7
7. EUT ANTENNA LOCATIONS	8
8. RF EXPOSURE	10
8.1 LIMITS	10
8.2 EVALUATION	11
9. SPECIFIC ABSORPTION RATE (SAR)	12
9.1 INTRODUCTION	12
9.2 SAR DEFINITION	12
10. SAR MEASUREMENTS SYSTEM CONFIGURATION	13
10.1 SAR MEASUREMENT SET-UP	13
10.2 DASYS E-FIELD PROBE SYSTEM	14
10.3 E-FIELD PROBE CALIBRATION	15
10.4 OTHER TEST EQUIPMENT	16
10.5 SCANNING PROCEDURE	18
10.6 DATA STORAGE AND EVALUATION	21
10.7 TISSUE-EQUIVALENT LIQUID	23
10.8 SYSTEM CHECK	25
11. MEASUREMENT PROCEDURES	27
11.1 GENERAL DESCRIPTION OF TEST PROCEDURES	27
11.2 MEASUREMENT VARIABILITY	28
12. TEST RESULTS	29
12.1 Conducted Power Results	29
12.2 SAR TEST RESULTS	31
12.3 Simultaneous Transmission SAR Analysis	32
12.4 MAXIMUM GRAPH RESULTS	32
13. MEASUREMENT UNCERTAINTY	33
14. MAIN TEST INSTRUMENT	33
ANNEX A: TEST LAYOUT AND SETUP	34
ANNEX B: SYSTEM CHECK RESULTS	35
ANNEX C: MAXIMUM GRAPH RESULTS	37
ANNEX D: SYSTEM VALIDATION	39
ANNEX E: PROBE, DAE AND DIPOLE CALIBRATION CERTIFICATE	41

1. GENERAL INFORMATION

Applicant:	Guangzhou Xaircraft Technology CO.,LTD. Block C, No.115, Gaopu Road, Tianhe District, GuangzhouCity, Guangdong,P.R.China
Manufacturer:	Guangzhou Xaircraft Technology CO.,LTD. Block C, No.115, Gaopu Road, Tianhe District, GuangzhouCity, Guangdong,P.R.China
Product Description:	WLAN Model
Model Number:	WM101
Sample Number:	Z230403082-001
File Number:	230403082SZN-003
Date of Test:	26 April 2023 to 28 April 2023

The above equipment was tested by Intertek Testing Services Shenzhen Ltd. Longhua Branch. The test data, data evaluation, test procedures, and equipment configurations shown in this report were made in accordance with the procedures given in IEEE 1528-2013 and KDB 865664. This device is in compliance with Specific Absorption Rate (SAR) for general population/uncontrolled exposure limits (4.0 W/kg) specified in ANSI/IEEE C95.1-1992.

The test results of this report relate only to the tested sample identified in this report.

2. STATEMENT OF COMPLIANCE

The Maximum reported SAR10g

Band	Mode	Test Position	Channel /Frequency (MHz)	Limit SAR10g 4W/kg	
				Measured SAR10g (W/kg)	Reported SAR10g (W/kg)
2.4G WIFI	802.11b	Rear Side	1/2412	0.748	0.90
WIFI 5.8GHz	802.11n20	Left Side	157/5785	0.454	0.51

The SAR values found for the WLAN Model are below the maximum recommended levels of 4.0 W/kg as averaged over any 10g tissue according to the ANSI C95.1-1992.

The maximum reported SAR value is: 0.90 W/kg (10g).

3. Equipment Under Test (EUT) TECHNICAL DESCRIPTION

Characteristics	Description	
Product Name:	WLAN Model	
Device type:	Portable device	
Exposure Category:	Uncontrolled Environment/General Population	
Test Mode(s):	WiFi 2.4G (DSSS/OFDM) WiFi 5.8G (OFDM)	
Device Class:	B	
Antenna Type:	FPC Antenna	
Antenna Gain:	WiFi 2.4G: 2.7dBi WiFi 5.8G: 2.3dBi	
Operating Frequency Range(s)	Band	Frequency Rang (MHz)
	WiFi 2.4G	2400-2483.5
	WiFi 5.8G	5725-5850
	WiFi 2.4G: 802.11b/g/n 20M: 1-6-11 802.11n 40M: 3-6-9 WiFi 5.8G: 802.11a/n 20M: 149-57-165 802.11n 40M: 151-159	
Power supply:	D.C. 5V	
Product Software Version:	V1.0.1.43	
Product Hardware Version:	V2.0	

Note:

1. NA is Not Applicable
2. For more details, please refer to the User's manual of the EUT.
3. The sample under test was selected by the Client.

4. Auxiliary Equipment Details

Description	Manufacturer	Description
Power Adapter	Provide by applicant	Model: GS-511 Input: 100-240V~, 50/60Hz, 0.5A Output: 5V==3A, 9V==2A, 12V==1.5A
USB cable	Provided by applicant	unshielded, Length: 100cm

5. Test Facility

Site Description	
EMC Lab.	The Laboratory has been assessed and proved to be in compliance with CNAS/CL01: 2006(identical to ISO/IEC17025: 2005) The Certificate Registration Number is L0327
	FCC Registration Number:435976 FCC Designation Number:CN1188 ISED Registration Number: 2055C ISED Cab Identifier: CN0038
Name of Firm	Intertek Testing Services Shenzhen Ltd. Longhua Branch
Site Location	101, 201, Building B, No. 308 Wuhe Avenue, Zhangkengjing Community, GuanHu Subdistrict, LongHua District, ShenZhen, P.R. China

6. Guidance Standard

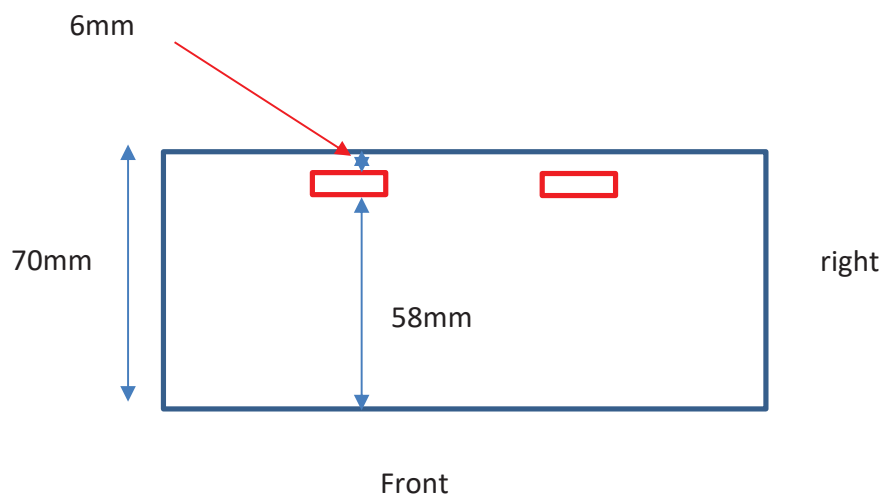
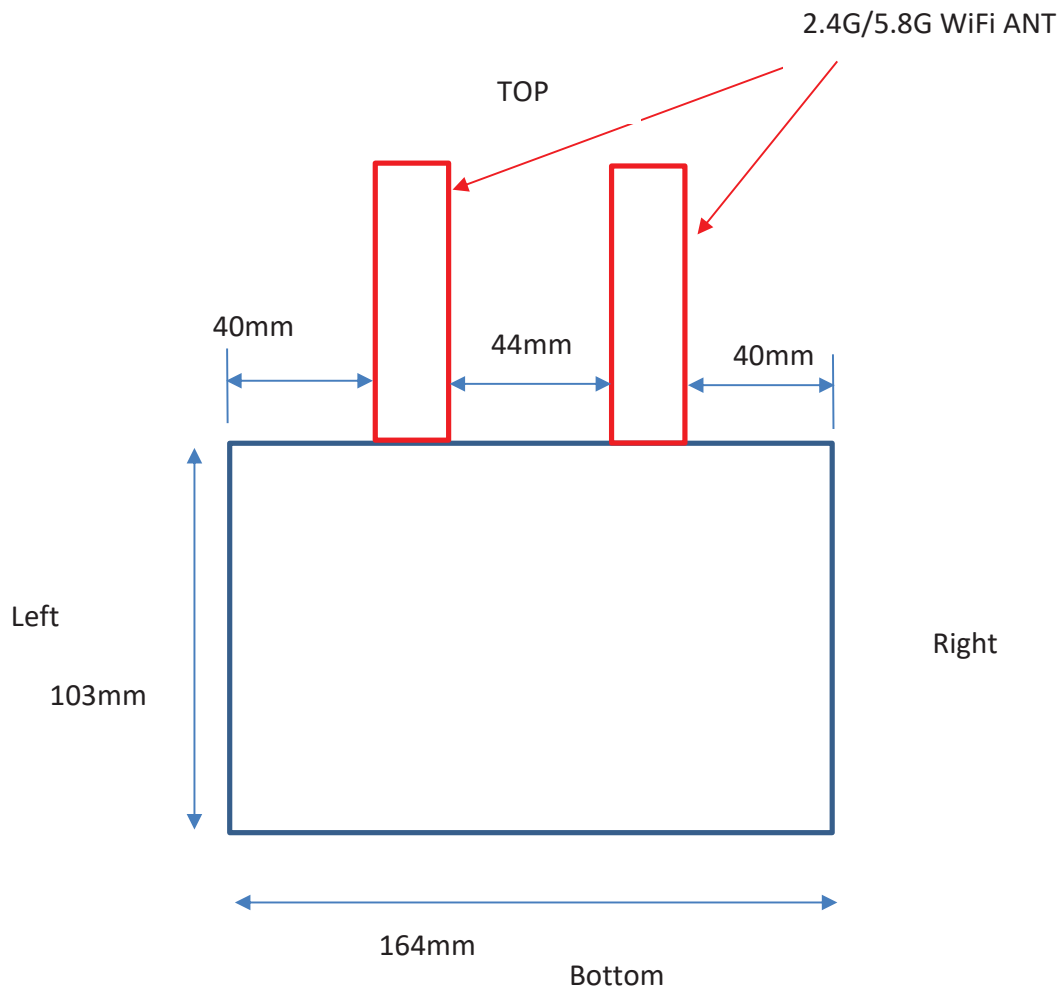
The Specific Absorption Rate (SAR) testing specification, method, and procedure for this device is in accordance with the following standards:

- ☒ FCC 47CFR §2.1093 Radiofrequency Radiation Exposure Evaluation: Portable Devices
- ☒ ANSI C95.1, 1992: Safety Levels with Respect to Human Exposure to Radio Frequency Electromagnetic Fields, 3 kHz to 300 GHz. (IEEE Std C95.1-1991)
- ☒ IEEE Std 1528™-2013: IEEE Recommended Practice for Determining the Peak Spatial-Average Specific Absorption Rate (SAR) in the Human Head from Wireless Communications Devices: Measurement Techniques.
- ☒ KDB 865664 D01 SAR measurement 100 MHz to 6 GHz v01r04: SAR Measurement Requirements for 100 MHz to 6 GHz
- ☒ KDB 865664 D02 SAR Reporting v01r02
- ☒ KDB 690783 D01 SAR Listings on Grants v01r03
- ☒ KDB 447498 D01 Mobile Portable RF Exposure v06: Mobile and Portable Device RF Exposure Procedures and Equipment Authorization Policies
- ☒ KDB 941225 D06 Hotspot Mode v02r01: SAR Evaluation Procedures for Portable Devices with Wireless Router Capabilities
- ☒ KDB 248227 D01 SAR Guidance for IEEE 802.11 (Wi-Fi) Transmitters
- ☒ KDB 616217 D04 SAR Evaluation Considerations for Laptop, Notebook, Netbook and Tablet Computers

Remark:

This portable wireless equipment has been measured in all cases requested by the relevant standards. Test results in Chapter 11 of this test report are below limits specified in the relevant standards for the tested bands only.

7. EUT Antenna Locations



Test position consideration:

Distance of EUT antenna-to-edge/surface(mm), Test distance: 0mm					
Rear	Front	Left	Right	Top	Bottom
6	58	40	40	∞	103

All Sides for SAR Testing Evaluation (Test distance: 0mm):

Distance of EUT antenna-to-edge/surface(mm), Test distance:0mm						
Antennas	Front side	rear side	Left side	Right side	Top side	Bottom side
2.4G WIFI	Yes	Yes	Yes	Yes	N/A	Yes
5.8G WIFI	Yes	Yes	Yes	Yes	N/A	Yes

Note:

1. Limb SAR assessments are required.
2. Referring to KDB 941225 D06v02r01, when the overall device length and width are $\geq 9\text{cm} * 5\text{cm}$, the test distance is 10mm. SAR must be measured for all sides and surfaces with a transmitting antenna located within 25mm from that surface or edge.
3. Per KDB 447498 D01v06, for EUT the test separation distance is determined by the smallest distance between the outer surface of the device and the user, which is 0 mm for Limb SAR.

8. RF Exposure

8.1 LIMITS

Uncontrolled Environment

Uncontrolled Environments are defined as locations where there is the exposure of individuals who have no knowledge or control of their exposure. The general population/uncontrolled exposure limits are applicable to situations in which the general public may be exposed or in which persons who are exposed as a consequence of their employment may not be made fully aware of the potential for exposure or cannot exercise control over their exposure. Members of the general public would come under this category when exposure is not employment-related; for example, in the case of a wireless transmitter that exposes persons in its vicinity.

Limits for General Population/Uncontrolled Exposure (W/kg)

Whole-Body	Partial-Body	Hands, Wrists, Feet and ankles
0.08	1.6	4.0

Whole-Body SAR is averaged over the entire body, partial-body SAR is averaged over any 1gram of tissue defined as a tissue volume in the shape of a cube. SAR for hands, wrists, feet and ankles is averaged over any 10 grams of tissue defined as a tissue volume in the shape of a cube.

8.2 EVALUATION

According to FCC KDB447498 D01 and §1.1310, systems operating under the provisions of this section shall be operated in a manner that ensures that the public is not exposed to radio frequency energy level in excess of the Commission's guidelines.

- 1) The 1-g and 10-g SAR test exclusion thresholds for 100 MHz to 6 GHz at *test separation distances* ≤ 50 mm are determined by:

$$[(\text{max. power of channel, including tune-up tolerance, mW}) / (\text{min. test separation distance, mm})] \cdot [\sqrt{f_{\text{(GHz)}}}] \leq 3.0 \text{ for 1-g SAR and } \leq 7.5 \text{ for 10-g extremity SAR,}^{16} \text{ where}$$

- $f_{\text{(GHz)}}$ is the RF channel transmit frequency in GHz
- Power and distance are rounded to the nearest mW and mm before calculation¹⁷
- The result is rounded to one decimal place for comparison

The test exclusions are applicable only when the minimum *test separation distance* is ≤ 50 mm and for transmission frequencies between 100 MHz and 6 GHz. When the minimum *test separation distance* is < 5 mm, a distance of 5 mm is applied to determine SAR test exclusion.

Routine SAR evaluation refers to that specifically required by § 2.1093, using measurements or computer simulation. Portable transmitters with output power greater than the applicable low threshold require SAR testing to qualify for TCB approval.

Exclusion Thresholds = $P\sqrt{F}/D$

P= Maximum turn-up power in mW

F= Channel frequency in GHz

D= Minimum test separation distance in mm

9. Specific Absorption Rate (SAR)

9.1 INTRODUCTION

SAR is related to the rate at which energy is absorbed per unit mass in an object exposed to a radio field. The SAR distribution in a biological body is complicated and is usually carried out by experimental techniques or numerical modeling. The standard recommends limits for two tiers of groups, occupational/controlled and general population/uncontrolled, based on a person's awareness and ability to exercise control over his or her exposure. In general, occupational/controlled exposure limits are higher than the limits for general population/uncontrolled.

9.2 SAR DEFINITION

The SAR definition is the time derivative (rate) of the incremental energy (dW) absorbed by (dissipated in) an incremental mass (dm) contained in a volume element (dv) of a given density (ρ). The equation description is as below:

$$SAR = \frac{d}{dt} \left(\frac{dW}{dm} \right) = \frac{d}{dt} \left(\frac{dW}{\rho dv} \right)$$

SAR is expressed in units of Watts per kilogram (W/kg)

SAR measurement can be either related to the temperature elevation in tissue by

$$SAR = c \left(\frac{\delta T}{\delta t} \right)$$

Where: C is the specific heat capacity, δT is the temperature rise and δt is the exposure duration, or related to the electrical field in the tissue by

$$SAR = \frac{\sigma |E|^2}{\rho}$$

Where: σ is the conductivity of the tissue ρ is the mass density of tissue and E is the RMS electrical field strength.

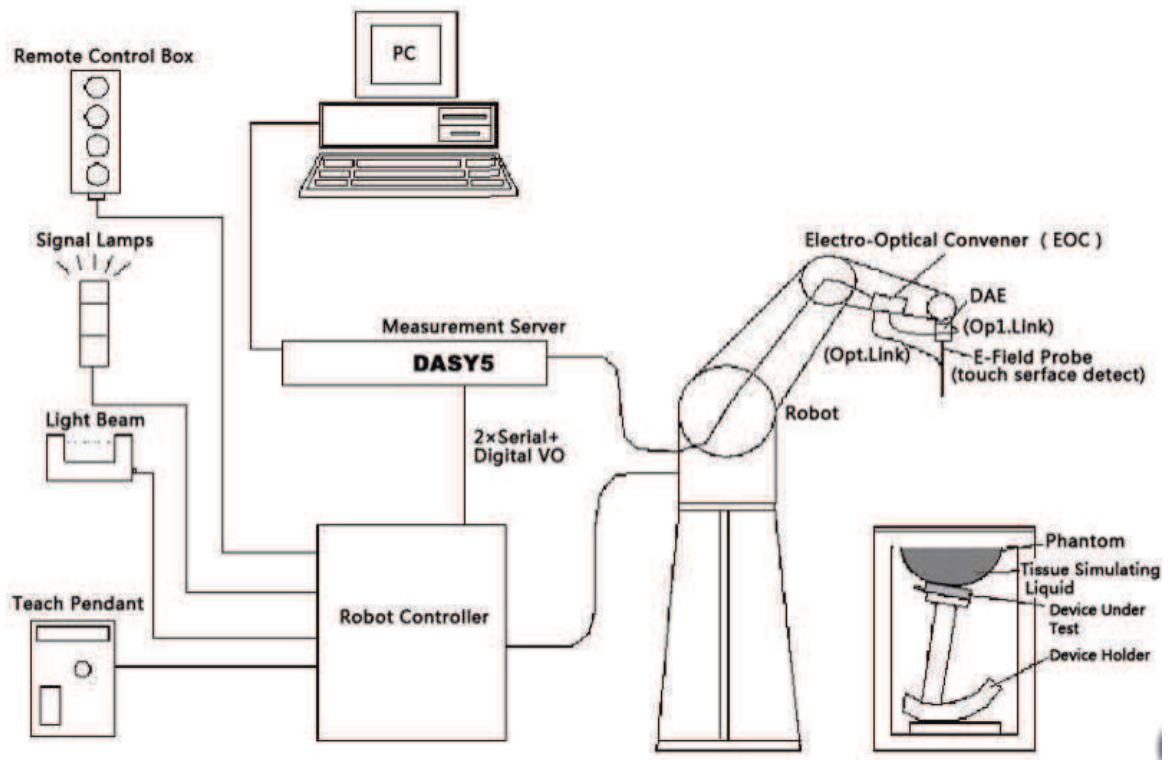
However for evaluating SAR of low power transmitter, electrical field measurement is typically applied.

10. SAR Measurements System Configuration

10.1 SAR MEASUREMENT SET-UP

The DASY5 system for performing compliance tests consists of the following items:

- A standard high precision 6-axis robot (Stäubli TX=RX family) with controller, teach pendant and software. An arm extension for accommodating the data acquisition electronics (DAE).
- An isotropic field probe optimized and calibrated for the targeted measurement.
- A data acquisition electronics (DAE) which performs the signal amplification, signal multiplexing, AD-conversion, offset measurements, mechanical surface detection, collision detection, etc. The unit is battery powered with standard or rechargeable batteries. The signal is optically transmitted to the EOC.
- The Electro-optical converter (EOC) performs the conversion from optical to electrical signals for the digital communication to the DAE. To use optical surface detection, a special version of the EOC is required. The EOC signal is transmitted to the measurement server.
- The function of the measurement server is to perform the time critical tasks such as signal filtering, control of the robot operation and fast movement interrupts.
- The Light Beam used is for probe alignment. This improves the (absolute) accuracy of the probe positioning.
- A computer running Win 7 profesional operating system and the DASY5 software.
- Remote control and teach pendant as well as additional circuitry for robot safety such as warning lamps, etc.
- The phantom, the device holder and other accessories according to the targeted measurement.



Picture 1 SAR Lab Test Measurement Set-up

10.2 DASY5 E-FIELD PROBE SYSTEM

The SAR measurements were conducted with the dosimetric probe designed in the classical triangular configuration and optimized for dosimetric evaluation. The probe is constructed using the thick film technique; with printed resistive lines on ceramic substrates. The probe is equipped with an optical multifiber line ending at the front of the probe tip. It is connected to the EOC box on the robot arm and provides an automatic detection of the phantom surface. Half of the fibers are connected to a pulsed infrared transmitter, the other half to a synchronized receiver. As the probe approaches the surface, the reflection from the surface produces a coupling from the transmitting to the receiving fibers. This reflection increases first during the approach, reaches maximum and then decreases. If the probe is flatly touching the surface, the coupling is zero. The distance of the coupling maximum to the surface is independent of the surface reflectivity and largely independent of the surface to probe angle. The DASY5 software reads the reflection turning a software approach and looks for the maximum using 2nd ord curve fitting. The approach is stopped at reaching the maximum.

Probe Specifications:

Model:	EX3DV4
Calibration:	ISO/IEC 17025 calibration service available
Probe Length:	337 mm
Probe Tip Length:	9 mm
Body Diameter:	10 mm
Tip Diameter:	2.5 mm
Application:	High Precision dosimetric measurements in any exposure scenario (e.g., very strong Picture 2 E-field Probe gradient fields).



Picture 2 E-field Probe

10.3 E-FIELD PROBE CALIBRATION

Each E-Probe/Probe Amplifier combination has unique calibration parameters. A TEM cell calibration procedure is conducted to determine the proper amplifier settings to enter in the probe parameters. The amplifier settings are determined for a given frequency by subjecting the probe to a known E-field density (1 mW/cm²) using an RF Signal generator, TEM cell, and RF Power Meter.

The free space E-field from amplified probe outputs is determined in a test chamber. This calibration can be performed in a TEM cell if the frequency is below 1 GHz and in a waveguide or other methodologies above 1 GHz for free space. For the free space calibration, the probe is placed in the volumetric center of the cavity and at the proper orientation with the field. The probe is then rotated 360 degrees until the three channels show the maximum reading. The power density readings equate to 1 mW/cm².

E-field temperature correlation calibration is performed in a flat phantom filled with the appropriate simulated brain tissue. The E-field in the medium correlates with the temperature rise in the dielectric medium. For temperature correlation calibration a RF transparent thermistor-based temperature probe is used in conjunction with the E-field probe.

$$SAR = C \frac{\Delta T}{\Delta t}$$

Where:

Δt = Exposure time (30 seconds),

C = Heat capacity of tissue (brain or muscle),

ΔT = Temperature increase due to RF exposure.

$$SAR = \frac{|E|^2 \cdot \sigma}{\rho}$$

Where:

σ = Simulated tissue conductivity,

ρ = Tissue density (kg/m³).

10.4 OTHER TEST EQUIPMENT

10.4.1 Data Acquisition Electronics (DAE)

The data acquisition electronics consist of a highly sensitive electrometer-grade preamplifier with auto-zeroing, a channel and gain-switching multiplexer, a fast 16 bit AD-converter and a command decoder with a control logic unit. Transmission to the measurement server is accomplished through an optical downlink for data and status information, as well as an optical uplink for commands and the clock.

The mechanical probe mounting device includes two different sensor systems for frontal and sideways probe contacts. They are used for mechanical surface detection and probe collision detection.

The input impedance of the DAE is 200 MOhm; the inputs are symmetrical and floating. Common mode rejection is above 80 dB.



Picture 3 DAE

10.4.2 Robot

The SPEAG DASY system uses the high precision robots (DASY5: TX90XL) type from Stäubli SA (France). For the 6-axis controller system, the robot controller version from Stäubli is used. The Stäubli robot series have many features that are important for our application:

- High precision (repeatability 0.02mm)
- High reliability (industrial design)
- Low maintenance costs (virtually maintenance free due to direct drive gears; no belt drives)
- Jerk-free straight movements (brushless synchron motors; no stepper motors)
- Low ELF interference (motor control fields shielded via the closed metallic construction shields)



Picture 4 DASY 5

Picture 5 Server for DASY 5

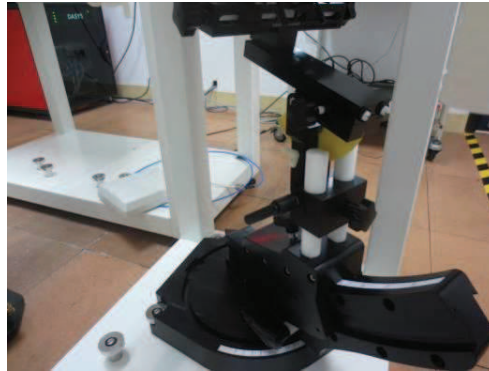
10.4.4 Device Holder for Phantom

The DASY device holder is designed to cope with the different positions given in the standard. It has two scales for device rotation (with respect to the body axis) and device inclination (with respect to the line between the ear reference points). The rotation centers for both scales are the ear reference point (ERP). Thus the device needs no repositioning when changing the angles.

The DASY device holder is constructed of low-loss POM material having the following dielectric parameters: relative permittivity $\epsilon=3$ and loss tangent $\delta=0.02$. The amount of dielectric material has been reduced in the closest vicinity of the device, since measurements have suggested that the influence of the clamp on the test results could thus be lowered.

<Laptop Extension Kit>

The extension is lightweight and made of POM, acrylic glass and foam. It fits easily on the upper part of the Mounting Device in place of the phone positioner. The extension is fully compatible with the Twin-SAM and ELI phantoms.

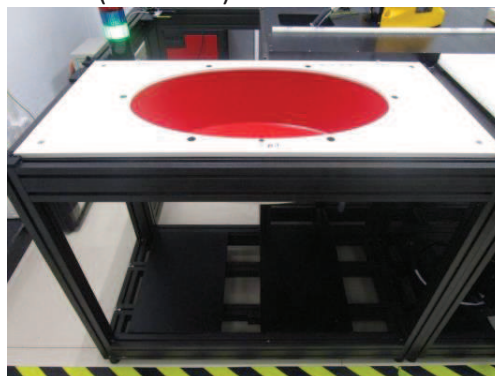


Picture 6 Device Holder

10.4.5 Phantom

Phantom for compliance testing of handheld and body-mounted wireless devices in the frequency range of 30 MHz to 6 GHz. ELI is fully compatible with the IEC 62209-2 standard and all known tissue simulating liquids. ELI has been optimized regarding its performance and can be integrated into our standard phantom tables. A cover prevents evaporation of the liquid. Reference markings on the phantom allow installation of the complete setup, including all predefined phantom positions and measurement grids, by teaching three points. The phantom is compatible with all SPEAG dosimetric probes and dipoles.

Shell Thickness: 2 ± 0.2 mm
Filling Volume: Approx. 30 liters
Dimensions: 190×600×0 mm (H x L x W)



Picture 7 ELI Phantom

10.5 SCANNING PROCEDURE

The DASY5 installation includes predefined files with recommended procedures for measurements and validation. They are read-only document files and destined as fully defined but unmeasured masks. All test positions (head or body-worn) are tested with the same configuration of test steps differing only in the grid definition for the different test positions.

The “reference” and “drift” measurements are located at the beginning and end of the batch process. They measure the field drift at one single point in the liquid over the complete procedure. The indicated drift is mainly the variation of the DUT’s output power and should vary max. $\pm 5\%$.

The “surface check” measurement tests the optical surface detection system of the DASY5 system by repeatedly detecting the surface with the optical and mechanical surface detector and comparing the results. The output gives the detecting heights of both systems, the difference between the two systems and the standard deviation of the detection repeatability. Air bubbles or refraction in the liquid due to separation of the sugar-water mixture gives poor repeatability (above $\pm 0.1\text{mm}$). To prevent wrong results tests are only executed when the liquid is free of air bubbles. The difference between the optical surface detection and the actual surface depends on the probe and is specified with each probe. (It does not depend on the surface reflectivity or the probe angle to the surface within $\pm 30^\circ$.)

Area Scan

The Area Scan is used as a fast scan in two dimensions to find the area of high field values before running a detailed measurement around the hot spot. Before starting the area scan a grid spacing is set according to FCC KDB Publication 865664. During scan the distance of the probe to the phantom remains unchanged. After finishing area scan, the field maxima within a range of 2 dB will be ascertained.

Zoom Scan

After the maximum interpolated values were calculated between the points in the cube, the SAR was averaged over the spatial volume (1g or 10g) using a 3D-Spline interpolation algorithm. The 3D-spline is composed of three one-dimensional splines with the "Not a knot" condition (in x, y, and z directions). The volume was then integrated with the trapezoidal algorithm.

Spatial Peak Detection

The procedure for spatial peak SAR evaluation has been implemented and can determine values of masses of 1g and 10g, as well as for user-specific masses. The DASY5 system allows evaluations that combine measured data and robot positions, such as:

- maximum search
- extrapolation
- boundary correction
- peak search for averaged SAR

During a maximum search, global and local maxima searches are automatically performed in 2-D after each Area Scan measurement with at least 6 measurement points. It is based on the evaluation of the local SAR gradient calculated by the Quadratic Shepard's method. The algorithm will find the global maximum and all local maxima within -2 dB of the global maxima for all SAR distributions.

Extrapolation routines are used to obtain SAR values between the lowest measurement points and the inner phantom surface. The extrapolation distance is determined by the surface detection distance and the probe sensor offset. Several measurements at different distances are necessary for the extrapolation. Extrapolation routines require at least 10 measurement points in 3-D space.

They are used in the Zoom Scan to obtain SAR values between the lowest measurement points and the inner phantom surface. The routine uses the modified Quadratic Shepard's method for extrapolation.

A Z-axis scan measures the total SAR value at the x-and y-position of the maximum SAR value found during the cube scan. The probe is moved away in z-direction from the bottom of the SAM phantom in 5mm steps.

Table 1: Area and Zoom Scan Resolutions per FCC KDB Publication 865664 D01

Frequency	Maximum Area Scan Resolution (mm) (Δx_{area} , Δy_{area})	Maximum Zoom Scan Resolution (mm) (Δx_{zoom} , Δy_{zoom})	Maximum Zoom Scan Spatial Resolution (mm) $\Delta z_{zoom}(n)$	Minimum Zoom Scan Volume (mm) (x,y,z)
≤2 GHz	≤15	≤8	≤5	≥ 30
2-3 GHz	≤12	≤5	≤5	≥30
3-4 GHz	≤12	≤5	≤4	≥28
4-5 GHz	≤10	≤4	≤3	≥25
5-6 GHz	≤10	≤4	≤2	≥22

10.6 DATA STORAGE AND EVALUATION

10.6.1 Data Storage

The DASY5 software stores the acquired data from the data acquisition electronics as raw data (in microvolt readings from the probe sensors), together with all necessary software parameters for the data evaluation (probe calibration data, liquid parameters and device frequency and modulation data) in measurement files with the extension “.DAE4”. The software evaluates the desired unit and format for output each time the data is visualized or exported. This allows verification of the complete software setup even after the measurement and allows correction of incorrect parameter settings. For example, if a measurement has been performed with a wrong crest factor parameter in the device set up, the parameter can be corrected afterwards and the data can be re-evaluated.

The measured data can be visualized or exported in different units or formats, depending on the selected probe type ([V/m], [A/m], [°C], [mW/g], [mW/cm²], [dBrel], etc.). Some of these units are not available in certain situations or show meaningless results, e.g., a SAR output in a loss less media will always be zero. Raw data can also be exported to perform the evaluation with other software packages.

10.6.2 Data Evaluation by SEMCAD

The SEMCAD software automatically executes the following procedures to calculate the field units from the microvolt readings at the probe connector. The parameters used in the evaluation are stored in the configuration modules of the software:

Probe parameters:

- Sensitivity Norm_i, a_{i0}, a_{i1}, a_{i2}
- Conversion factor ConvF_i
- Diode compression point Dcp_i

Device parameters:

- Frequency f
- Crest factor cf

Media parameters:

- Conductivity
- Density

These parameters must be set correctly in the software. They can be found in the component documents or they can be imported into the software from the configuration files issued for the DASY5 components. In the direct measuring mode of the multimeter option, the parameters of the actual system setup are used. In the scan visualization and export modes, the parameters stored in the corresponding document files are used.

The first step of the evaluation is a linearization of the filtered input signal to account for the compression characteristics of the detector diode. The compensation depends on the input signal, the diode type and the DC-transmission factor from the diode to the evaluation electronics.

If the exciting field is pulsed, the crest factor of the signal must be known to correctly compensate for peak power. The formula for each channel can be given as:

$$V_i = U_i + U_i^2 \cdot c f / dcp_i$$

With V_i = compensated signal of channel i ($i = x, y, z$)

U_i = input signal of channel i ($i = x, y, z$)

cf = crest factor of exciting field (DASY parameter)

dcp_i = diode compression point (DASY parameter)

From the compensated input signals the primary field data for each channel can be evaluated:

E-field probes: $E_i = (V_i / Norm_i \cdot ConvF)^{1/2}$

H-field probes: $H_i = (V_i)^{1/2} \cdot (a_{i0} + a_{i1} f + a_{i2} f^2) / f$

With V_i = compensated signal of channel i ($i = x, y, z$)

$Norm_i$ = sensor sensitivity of channel i ($i = x, y, z$)

[mV/(V/m)²] for E-field Probes

$ConvF$ = sensitivity enhancement in solution

a_{ij} = sensor sensitivity factors for H-field probes

f = carrier frequency [GHz]

E_i = electric field strength of channel i in V/m

H_i = magnetic field strength of channel i in A/m

The RSS value of the field components gives the total field strength (Hermitian magnitude):

$$E_{tot} = (E_x^2 + E_y^2 + E_z^2)^{1/2}$$

The primary field data are used to calculate the derived field units.

$$SAR = (E_{tot})^2 \cdot \sigma / (\rho \cdot 1000)$$

with SAR = local specific absorption rate in mW/g

E_{tot} = total field strength in V/m

σ = conductivity in [mho/m] or [Siemens/m]

ρ = equivalent tissue density in g/cm³

Note that the density is normally set to 1 (or 1.06), to account for actual brain density rather than the density of the simulation liquid. The power flow density is calculated assuming the excitation field to be a free space field.

$$P_{pwe} = E_{tot}^2 / 3770 \text{ or } P_{pwe} = H_{tot}^2 \cdot 37.7$$

with P_{pwe} = equivalent power density of a plane wave in mW/cm²

E_{tot} = total electric field strength in V/m ; H_{tot} = total magnetic field strength in A/m

10.7 TISSUE-EQUIVALENT LIQUID

10.7.1 Tissue-equivalent Liquid Ingredients

The liquid is consisted of water, salt and Glycol. The liquid has previously been proven to be suited for worst-case. The Table 2 & 3 shows the detail solution. It's satisfying the latest tissue dielectric parameters requirements proposed by the KDB 865664 D01.

Table 2: Recommended Dielectric Performance of Tissue

Tissue Type	Bactericide	DGBE	HEC	NaCl	Sucrose	Triton X-100	Water	Diethylene Glycol Mono- hexylether
H750	0.2	-	0.2	1.4	57.0	-	41.1	-
H835	0.1	-	1.0	1.4	57.0	-	40.5	-
H900	0.1	-	1.0	1.5	56.5	-	40.9	-
H1450	-	45.5	-	0.7	-	-	53.8	-
H1640	-	45.8	-	0.5	-	-	53.7	-
H1750	-	44.5	-	0.3	-	-	55.2	-
H1800	-	44.9	-	0.2	-	-	54.9	-
H1900	-	44.9	-	0.2	-	-	54.9	-
H2000	-	50	-	-	-	-	50	-
H2300	-	44.9	-	0.1	-	-	55.0	-
H2450	-	45.0	-	0.1	-	-	54.9	-
H2600	-	45.1	-	0.1	-	-	54.8	-
H3500	-	8.0	-	0.2	-	20.0	71.8	-
H5G	-	-	-	-	-	17.2	65.50	17.3
B750	0.2	-	0.2	0.8	48.8	-	50.0	-
B835	0.2	-	0.2	0.9	48.5	-	50.2	-
B900	0.2	-	0.2	0.9	48.2	-	50.5	-
B1450	-	34.0	-	0.3	-	-	65.7	-
B1640	-	32.5	-	0.3	-	-	67.2	-
B1750	-	29.4	-	0.4	-	-	70.2	-
B1800	-	29.5	-	0.4	-	-	70.1	-
B1900	-	29.5	-	0.3	-	-	70.2	-
B2000	-	30.0	-	0.2	-	-	69.8	-
B2300	-	31.0	-	0.1	-	-	68.9	-
B2450	-	31.4	-	0.1	-	-	68.5	-
B2600	-	31.8	-	0.1	-	-	68.1	-
B3500	-	28.8	-	0.1	-	-	71.1	-
B5G	-	-	-	-	-	10.7	78.6	10.7

10.7.2 Tissue-equivalent Liquid Properties

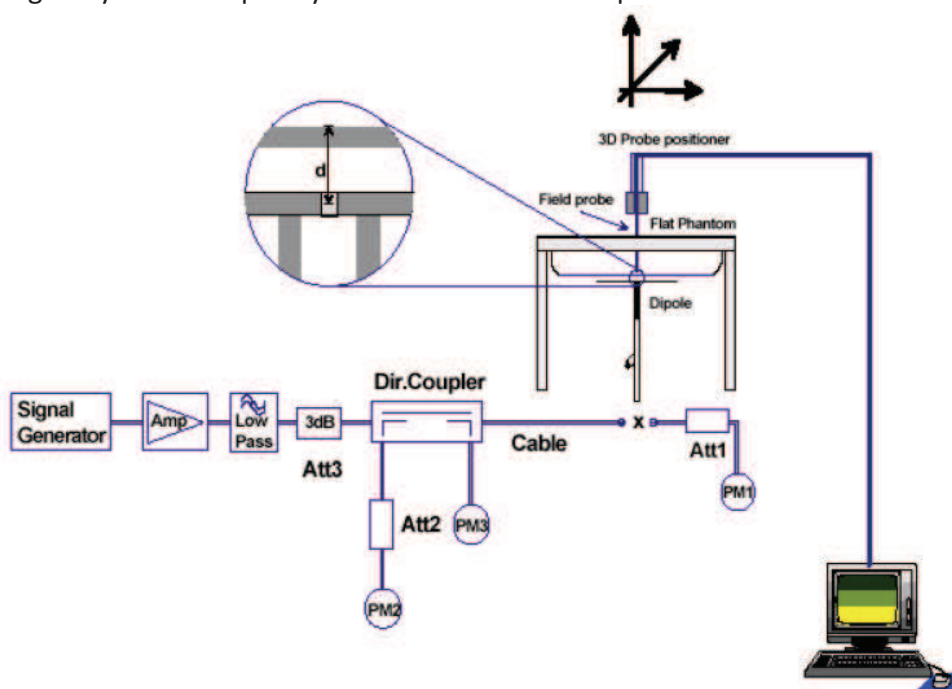
Table 3: Dielectric Performance of HeadTissue Simulating Liquid

Temperature: 21°C Relative humidity: 57%				
Frequency (MHz)	Measured Date	Description	Dielectric Parameters	
			ϵ_r	$\sigma(s/m)$
2450	27 April 2023	Target Value $\pm 5\%$ window	39.2 37.24—41.16	1.80 1.71 — 1.89
		Measurement Value	37.97	1.88
5800	27 April 2023	Target Value $\pm 5\%$ window	35.3 33.535-37.07	5.27 5.01-5.53
		Measurement Value	35.43	5.31

10.8 SYSTEM CHECK

10.8.1 Description of System Check

The manufacturer calibrates the probes annually. Dielectric parameters of the tissue simulants were measured every day using the dielectric probe kit and the network analyzer. A system check measurement was made following the determination of the dielectric parameters of the simulant, using the dipole validation kit. A power level of 250 mW was supplied to the dipole antenna, which was placed under the flat section of the twin SAM phantom. The system check results (dielectric parameters and SAR values) are given in the table 5. System check results have to be equal or near the values determined during dipole calibration with the relevant liquids and test system ($\pm 10\%$). System check is performed regularly on all frequency bands where tests are performed with the DASY5 system.



Picture 8 ystem Check Set-up

Justification for Extended SAR Dipole Calibrations

Usage of SAR dipoles calibrated less than 3 years ago but more than 1 year ago were confirmed in maintaining return loss (< -20 dB, within 20% of prior calibration) and impedance (within 5 ohm from prior calibration) requirements per extended calibrations in KDB 865664 D01:

10.8.2 System Check Results

Table 5: System Check for Simulating Liquid

Measurement Date	Frequency (MHz)	Liquid Type (head/body)	1W Target SAR10g (W/kg)	Measured SAR10g (W/kg)	1W Normalized SAR10g (W/kg)	Limit ($\pm 10\%$ Deviation)
April 27,2023	2450	head	23.90	6.1	24.40	2.09
April 27,2023	5800	head	22.30	2.16	21.60	-3.13

Note:

For 2450MHz system check input power: 250mW, above 5GHz system check input power: 100mW

11. Measurement Procedures

11.1 GENERAL DESCRIPTION OF TEST PROCEDURES

For WLAN SAR testing, WLAN engineering testing software installed on the DUT can provide continuous transmitting RF signal. This RF signal utilized in SAR measurement has almost 100% duty cycle and its crest factor is 1.

For the 802.11a/b/g/n/ac SAR tests, a communication link is set up with the test mode software for WIFI mode test. During the test, at the each test frequency channel, the EUT is operated at the RF continuous emission mode. Provided higher maximum output power is not specified for the other channels, channels 1, 6, 11, 36, 40, 48, 46, 42 are used to configure 22 MHz DSSS and 20/40/80MHz OFDM channels for SAR measurements; otherwise, the closest adjacent channel with the highest maximum output power specified for production units should be tested instead of channels 1, 6, 11, 40, 48, 46 or 42. In addition, SAR test reduction with respect to reported SAR and transmission band width according to 4.3.3 of KDB Publication 447498 D01 may also be applied.

802.11a/b/g/n/ac operating modes are tested independently according to the service requirements in each frequency band. 802.11a/b/g/n/ac modes are tested on the maximum average output channel.

SAR is measured for 2.4 GHz 802.11b DSSS using either a fixed test position or, when applicable, the initial test position procedure. SAR test reduction is determined according to the following:

- a) When the reported SAR of the highest measured maximum output power channel (see 3.1) for the exposure configuration is ≤ 0.8 W/kg, no further SAR testing is required for 802.11b DSSS in that exposure configuration.
- b) When the reported SAR is > 0.8 W/kg, SAR is required for that exposure configuration using the next highest measured output power channel. When any reported SAR is > 1.2 W/kg, SAR is required for the third channel; i.e., all channels require testing.

When SAR measurement is required for 2.4 GHz 802.11g/n OFDM configurations, the measurement and test reduction procedures for OFDM are applied (see 11.1.2, including subclauses). SAR is not required for the following 2.4 GHz OFDM conditions.

- a) When KDB Publication 447498 D01 SAR test exclusion applies to the OFDM configuration.
- b) When the highest reported SAR for DSSS is adjusted by the ratio of OFDM to DSSS specified maximum output power and the adjusted SAR is ≤ 1.2 W/kg.

11.2 MEASUREMENT VARIABILITY

Per FCC KDB Publication 865664 D01, SAR measurement variability was assessed for each frequency band, which was determined by the SAR probe calibration point and tissue-equivalent medium used for the device measurements. When both head and body tissue-equivalent media were required for SAR measurements in a frequency band, the variability measurement procedures were applied to the tissue medium with the highest measured SAR, using the highest measured SAR configuration for that tissue-equivalent medium. These additional measurements were repeated after the completion of all measurements requiring the same head or body tissue-equivalent medium in a frequency band. The test device was returned to ambient conditions (normal room temperature) with the battery fully charged before it was re-mounted on the device holder for the repeated measurement(s) to minimize any unexpected variations in the repeated results.

SAR Measurement Variability was assessed using the following procedures for each frequency band:

1. Repeated measurement is not required when the original highest measured SAR is < 0.80 W/kg; steps 2) through 4) do not apply.
2. When the original highest measured SAR is ≥ 0.80 W/kg, repeat that measurement once.
3. Perform a second repeated measurement only if the ratio of largest to smallest SAR for the original and first repeated measurements is > 1.20 or when the original or repeated measurement is ≥ 1.45 W/kg ($\sim 10\%$ from the 1-g SAR limit).
4. Perform a third repeated measurement only if the original, first or second repeated measurement is ≥ 1.5 W/kg and the ratio of largest to smallest SAR for the original, first and second repeated measurements is > 1.20 .

12. TEST RESULTS

12.1 Conducted Power Results

Test Condition:

1. Conducted Measurement
EUT was set for low, mid, high channel with modulated mode and highest RF output power.
The base station simulator was connected to the antenna terminal.
- 2 Conducted Emissions Measurement Uncertainty
All test measurements carried out are traceable to national standards. The uncertainty of the measurement at a confidence level of approximately 95% (in the case where distributions are normal), with a coverage factor of 2, in the range 30MHz – 40GHz is $\pm 1.5\text{dB}$.
- 3 Environmental Conditions

Temperature	22°C
Relative Humidity	55%
Atmospheric Pressure	1009mbar
- 4 Test Date: 27 April 2023

Test Procedures:

The output power was measured using power meter at low, mid, and hi channels.

WIFI Mode (2.4G)

TestMode	Antenna	Channel	Data rate (Mbps)	Average Output Power (dBm)	Average Tune up limited (dBm)
11B	Ant1	2412	1	17.0	16.0 \pm 2
	Ant2	2412	1	16.5	16.0 \pm 2
	Ant1	2437	1	16.5	16.0 \pm 2
	Ant2	2437	1	16.4	16.0 \pm 2
	Ant1	2462	1	15.5	16.0 \pm 2
	Ant2	2462	1	17.2	16.0 \pm 2
11G	Ant1	2412	1	17.6	16.0 \pm 2
	Ant2	2412	1	16.9	16.0 \pm 2
	Ant1	2437	1	16.7	16.0 \pm 2
	Ant2	2437	1	16.7	16.0 \pm 2
	Ant1	2462	1	16.4	16.0 \pm 2
	Ant2	2462	1	17.0	16.0 \pm 2
11N20MIMO	Ant1	2412	MCS0	16.3	15.0 \pm 2
	Ant2	2412	MCS0	15.8	15.0 \pm 2
	total	2412	MCS0	19.1	/
	Ant1	2437	MCS0	16.5	15.0 \pm 2
	Ant2	2437	MCS0	15.1	15.0 \pm 2
	total	2437	MCS0	18.9	/
	Ant1	2462	MCS0	15.8	15.0 \pm 2
	Ant2	2462	MCS0	14.1	15.0 \pm 2
11N40MIMO	total	2462	MCS0	18.0	/
	Ant1	2422	MCS0	16.0	15.0 \pm 2
	Ant2	2422	MCS0	14.7	15.0 \pm 2
	total	2422	MCS0	18.4	/
	Ant1	2437	MCS0	16.2	15.0 \pm 2

	Ant2	2437	MCS0	14.3	15.0±2
	total	2437	MCS0	18.4	/
	Ant1	2452	MCS0	16.3	15.0±2
	Ant2	2452	MCS0	14.5	15.0±2
	total	2452	MCS0	18.5	/

WIFI Mode (5.8G)

TestMode	Antenna	Channel	Channel number	Average Output Power (dBm)	Average Tune up limited (dBm)
11A	Ant1	5745	149	21.51	22.0±2
	Ant2	5745	149	21.88	22.0±2
	Ant1	5785	157	22.03	22.0±2
	Ant2	5785	157	21.87	22.0±2
	Ant1	5825	165	22.38	22.0±2
	Ant2	5825	165	20.53	22.0±2
11N20MIMO	Ant1	5745	149	18.83	20.0±2
	Ant2	5745	149	21.55	20.0±2
	total	5745	149	23.4	/
	Ant1	5785	157	20.56	20.0±2
	Ant2	5785	157	21.53	20.0±2
	total	5785	157	24.1	/
	Ant1	5825	165	20.77	20.0±2
	Ant2	5825	165	20.16	20.0±2
	total	5825	165	23.5	/
11N40MIMO	Ant1	5755	151	18.77	20.0±2
	Ant2	5755	151	21.22	20.0±2
	total	5755	151	23.2	/
	Ant1	5795	159	20.66	20.0±2
	Ant2	5795	159	19.14	20.0±2
	total	5795	159	23.0	/

12.2 SAR TEST RESULTS

Table 6: SAR Values

Band	Mode	Test Position	Channel	Maximum Tune-up (dBm)	Conducted Power (dBm)	Power Drift	SAR 10g	Scaling Factor	Scaled 10g SAR
Test Position of extremity (Distance Between EUT and Flat Phantom:0mm)									
2.4G WIFI ANT1	802.11b	Front Face	11	18.0	17.00	0.14	0.033	1.26	0.04
2.4G WIFI ANT1	802.11b	Rear Face	11	18.0	17.00	0.09	0.251	1.26	0.32
2.4G WIFI ANT1	802.11b	Left Side	11	18.0	17.00	0.05	0.005	1.26	0.01
2.4G WIFI ANT1	802.11b	Right Side	11	18.0	17.00	0.02	0.003	1.26	0.00
2.4G WIFI ANT1	802.11b	Bottom Side	11	18.0	17.00	0.03	0.008	1.26	0.01
2.4G WIFI ANT2	802.11b	Front Face	1	18.0	17.2	0.06	0.072	1.20	0.09
2.4G WIFI ANT2	802.11b	Rear Face	1	18.0	17.2	0.06	0.748	1.20	0.90
2.4G WIFI ANT2	802.11b	Left Side	1	18.0	17.2	0.03	0.008	1.20	0.01
2.4G WIFI ANT2	802.11b	Right Side	1	18.0	17.2	-0.01	0.009	1.20	0.01
2.4G WIFI ANT2	802.11b	Bottom Side	1	18.0	17.2	-0.05	0.015	1.20	0.02
2.4G WIFI ANT1 MIMO	802.11N20	Front Face	1	17.0	16.3	-0.01	0.026	1.17	0.03
2.4G WIFI ANT1 MIMO	802.11N20	Rear Face	1	17.0	16.3	-0.01	0.367	1.17	0.43
2.4G WIFI ANT1 MIMO	802.11N20	Left Side	1	17.0	16.3	0.07	0.012	1.17	0.01
2.4G WIFI ANT1 MIMO	802.11N20	Right Side	1	17.0	16.3	0.11	0.010	1.17	0.01
2.4G WIFI ANT1 MIMO	802.11N20	Bottom Side	1	17.0	16.3	-0.03	0.019	1.17	0.02
2.4G WIFI ANT2 MIMO	802.11N20	Front Face	1	17.0	15.8	0.02	0.051	1.32	0.07
2.4G WIFI ANT2 MIMO	802.11N20	Rear Face	1	17.0	15.8	-0.05	0.547	1.32	0.72
2.4G WIFI ANT2 MIMO	802.11N20	Left Side	1	17.0	15.8	0.04	0.032	1.32	0.04
2.4G WIFI ANT2 MIMO	802.11N20	Right Side	1	17.0	15.8	0.02	0.025	1.32	0.03
2.4G WIFI ANT2 MIMO	802.11N20	Bottom Side	1	17.0	15.8	0.03	0.021	1.32	0.03
5.8G WIFI ANT1 MIMO	802.11N20	Front Face	157	22.0	20.56	0.05	0.125	1.39	0.17
5.8G WIFI ANT1 MIMO	802.11N20	Rear Face	157	22.0	20.56	-0.04	0.358	1.39	0.50
5.8G WIFI ANT1 MIMO	802.11N20	Left Side	157	22.0	20.56	0.07	0.028	1.39	0.04
5.8G WIFI ANT1 MIMO	802.11N20	Right Side	157	22.0	20.56	0.06	0.021	1.39	0.03
5.8G WIFI ANT1 MIMO	802.11N20	Bottom Side	157	22.0	20.56	0.01	0.019	1.39	0.03
5.8G WIFI ANT2 MIMO	802.11N20	Front Face	157	22.0	21.53	0.02	0.139	1.11	0.15
5.8G WIFI ANT2 MIMO	802.11N20	Rear Face	157	22.0	21.53	0.01	0.454	1.11	0.51
5.8G WIFI ANT2 MIMO	802.11N20	Left Side	157	22.0	21.53	0.03	0.015	1.11	0.02
5.8G WIFI ANT2 MIMO	802.11N20	Right Side	157	22.0	21.53	0.02	0.012	1.11	0.01
5.8G WIFI ANT2 MIMO	802.11N20	Bottom Side	157	22.0	21.53	0.06	0.190	1.11	0.21

Note:

1. When the reported SAR of the highest measured maximum output power channel for the exposure configuration is ≤ 0.8 W/kg, no further SAR testing is required for 802.11b DSSS in that exposure configuration.
 2. When the reported SAR is > 0.8 W/kg, SAR is required for that exposure configuration using the next highest measured output power channel. When any reported SAR is > 1.2 W/kg, SAR is required for the third channel, i.e., all channels require testing.
- The EUT exercise program (provided by client) used during SAR testing was designed to exercise the various system components in a manner similar to a typical use. During the test, Channel and test mode software provided by the applicant was used to control the operating channel as well as the test mode. The worst case configuration is used in all specified testing.

Table 7: 2.4 GHz OFDM SAR Test Exclusion Requirements

Test Position	Channel/Frequency (MHz)	802.11b Max. Allowed Power (dBm)	802.11g/n Max. Allowed Power (dBm)	Limit SAR10g: 4W/kg		
				802.11b Report SAR10g (W/kg)	Scaling Factor	Adjusted SAR10g (W/kg)
Left Side	11/2462	18.0	18.0	0.90	1	0.90

Note: SAR is not required for the 2.4 GHz OFDM conditions if When the highest reported SAR for DSSS is adjusted by the ratio of OFDM to DSSS specified maximum output power and the adjusted SAR is ≤ 1.2 W/kg.

12.3 Simultaneous Transmission SAR Analysis.

Band	ANT1 Report SAR10g (W/kg)	ANT2 Report SAR10g (W/kg)	Simultaneous Transmission SAR10g (W/kg) (ANT1+ANT2)
2.4 G wifi MIMO	0.43	0.72	1.15
5.8G wifi MIMO	0.50	0.51	1.01

12.4 MAXIMUM GRAPH RESULTS

The graph results see ANNEX C.

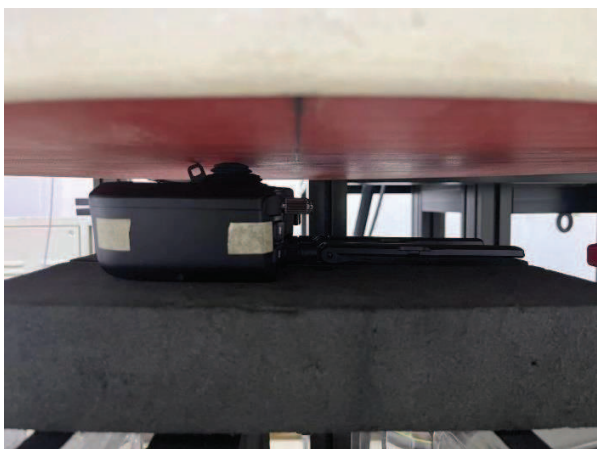
13. Measurement Uncertainty

When the highest measured 1-g SAR within a frequency band is < 1.5 W/kg, the extensive SAR measurement uncertainty analysis described in IEEE Std 1528-2013 is not required in SAR reports submitted for equipment approval.

14. Main Test Instrument

Equipment No.	Equipment	Manufacturer	Model No.	Serial No.	Last Cal.	Cal. Interval
SZ060-01	SAR Test System	SPEAG	DASY52 SAR TX90XL	F14/5YJ0B1/A/01	02/08/2023	1 year
SZ060-01-01	E-Field Probe	SPEAG	EX3DV4	7322	02/28/2023	1 year
SZ060-01-10	System Validation Dipole	SPEAG	D2450V2	966	10/21/2021	3 year
SZ060-01-12	System Validation Dipole	SPEAG	D5GHzV2	1218	10/15/2021	3 year
SZ060-01-13	Data Acquisition Unit	SPEAG	DAE4	1473	02/08/2023	1 year
SZ060-01-14	Dielectric Assessment Kit	SPEAG	DAKS 3.5	1056	N/A	N/A
SZ060-01-15	Vector Reflectometer	Copper Mountain Technologies	Planar R140	0090614	N/A	N/A
SZ060-01-16	Thermometer	LKM electronics GmbH	DTM3000	3477	12/27/2022	1 year
SZ060-01-17	Power Amplifier	Mini Circuits	ZHL-42W+	QA1449003	5/10/2022	1 year
SZ060-01-18	Power Amplifier	Mini Circuits	ZVE-8G+	111701437	5/10/2022	1 year
SZ060-01-21	ELI Phantom	SPEAG	ELI Phantom V6.0	2033	N/A	N/A
SZ180-13	MXG Vector Signal Generator	Keysight	N5182B	MY53051328	10/17/2022	1 year
SZ070-04	Directional Bridge	Agilent	86205A	MY31402141	12/19/2022	1 year
SZ182-02	RF Power Meter	Anritsu	ML2496A	1302005	4/28/2022	1 year
SZ182-03	Average power sensor	R&S	NRP-Z22	101689	4/27/2022	1 year
N/A	Device Holder	SPEAG	N/A	N/A	N/A	N/A

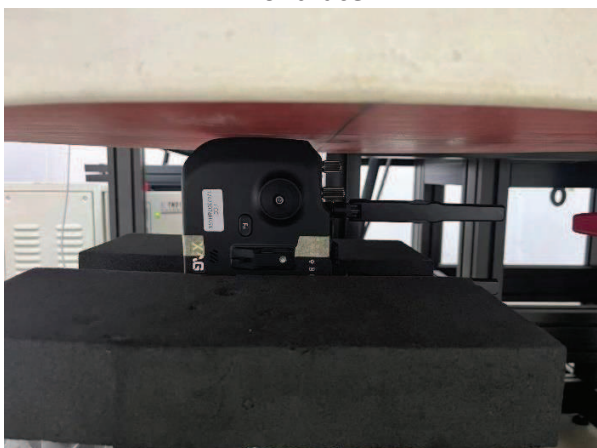
ANNEX A: Test Layout and Setup



Front face



Rear face



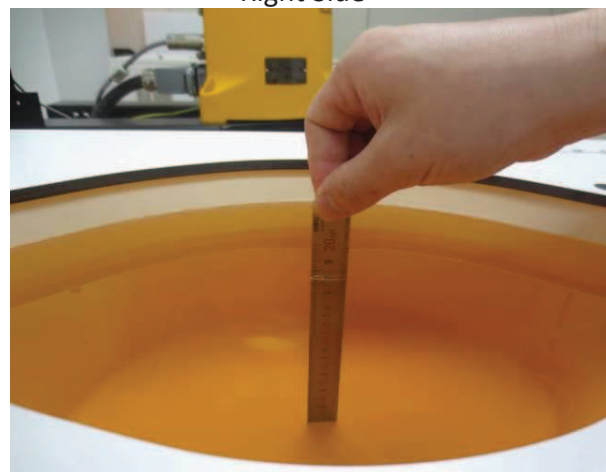
Left side



Right Side



Bottom side



6

ANNEX B: System Check Results

Date: 4/27/2023

2450 HEAD

Communication System: UID 0, CW (0); Frequency: 2450 MHz; Duty Cycle: 1:1

Medium: 2450 Head Medium parameters used: $f = 2450 \text{ MHz}$; $\sigma = 1.88 \text{ S/m}$; $\epsilon_r = 37.97$; $\rho = 1000 \text{ kg/m}^3$

Phantom section: Flat Section

Ambient Temperature: $22.0 \text{ }^\circ\text{C}$; Liquid Temperature: $21.5 \text{ }^\circ\text{C}$

DASY Configuration:

- Probe: EX3DV4 - SN7322; ConvF(7.5, 7.5, 7.5) @ 2450 MHz; Calibrated: 2/28/2023
- Sensor-Surface: 1.4mm (Mechanical Surface Detection)
- Electronics: DAE4 Sn1473; Calibrated: 2/28/2023
- Phantom: SAM 1 V5.0 (30deg); Type: QD 000 P40 CD; Serial: 1888
- DASY52 52.10.1(1476); SEMCAD X 14.6.11(7439)

Area Scan (7x7x1): Interpolated grid: $dx=15 \text{ mm}$, $dy=15 \text{ mm}$

Maximum value of SAR (interpolated) = 15.1 W/kg

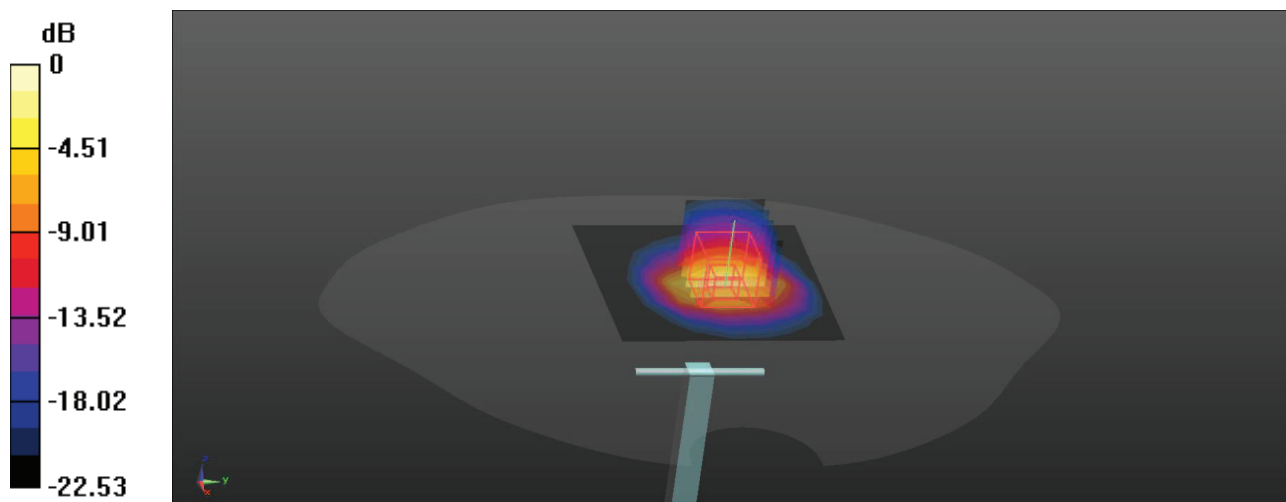
Zoom Scan (5x5x7)/Cube 0: Measurement grid: $dx=8\text{mm}$, $dy=8\text{mm}$, $dz=5\text{mm}$

Reference Value = 95.32 V/m ; Power Drift = 0.01 dB

Peak SAR (extrapolated) = 27.9 W/kg

SAR(1 g) = 13.3 W/kg ; SAR(10 g) = 6.1 W/kg

Maximum value of SAR (measured) = 17.5 W/kg



Date: 04/27/2023

System Check_H5800

Communication System: UID 0, CW (0); Frequency: 5800 MHz; Duty Cycle: 1:1

Medium parameters used: $f = 5800$ MHz; $\sigma = 5.319$ S/m; $\epsilon_r = 35.433$; $\rho = 1000$ kg/m³

Phantom section: Flat Section

DASY5 Configuration:

- Probe: EX3DV4 - SN7322; ConvF(4.9, 4.9, 4.9) @ 5800 MHz; Calibrated: 2/28/2023
- Sensor-Surface: 1.4mm (Mechanical Surface Detection)
- Electronics: DAE4 Sn1473; Calibrated: 2/28/2023
- Phantom: SAM 1 V5.0 (30deg); Type: QD 000 P40 CD; Serial: 1888
- DASY52 52.10.1(1476); SEMCAD X 14.6.11(7439)

Area Scan (6x6x1): Measurement grid: dx=10mm, dy=10mm

Maximum value of SAR (measured) = 16.2 W/kg

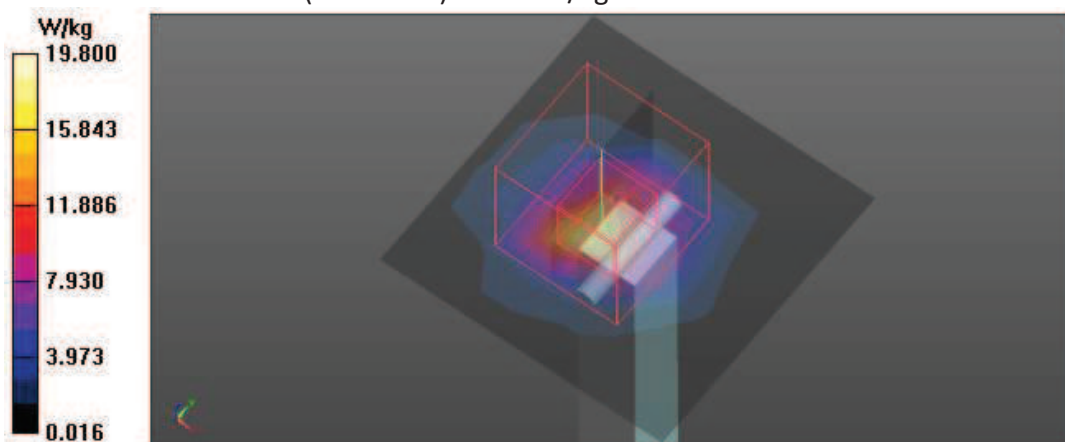
Zoom Scan (7x7x12)/Cube 0: Measurement grid: dx=4mm, dy=4mm, dz=2mm

Reference Value = 63.40 V/m; Power Drift = -0.01 dB

Peak SAR (extrapolated) = 35.0 W/kg

SAR(1 g) = 7.55 W/kg; SAR(10 g) = 2.16 W/kg

Maximum value of SAR (measured) = 19.8 W/kg



ANNEX C: MAXIMUM GRAPH RESULTS

Date: 4/27/2023

Test Laboratory: Intertek Service

2.4G WIFI 11B_rear Side CH 2412-ANT2

Communication System: UID 0, WiFi 802.11 b (0); Frequency: 2412 MHz; Duty Cycle: 1:1

Medium: 2450 Head Medium parameters used: $f = 2412$ MHz; $\sigma = 1.837$ S/m; $\epsilon_r = 38.408$; $\rho = 1000$ kg/m³

Phantom section: Flat Section

Ambient Temperature: 22.0 °C; Liquid Temperature: 21.5 °C

DASY Configuration:

Probe: EX3DV4 - SN7322; ConvF(7.5, 7.5, 7.5) @ 2412 MHz; Calibrated: 2/28/2023

Sensor-Surface: 1.4mm (Mechanical Surface Detection)

Electronics: DAE4 Sn1473; Calibrated: 2/8/2023

Phantom: ELI V6.0 (20deg probe tilt); Type: QD OVA 003 AA; Serial: 2033

DASY52 52.10.1(1476); SEMCAD X 14.6.11(7439)

Area Scan (18x24x1): Measurement grid: dx=12mm, dy=12mm

Maximum value of SAR (measured) = 2.42 W/kg

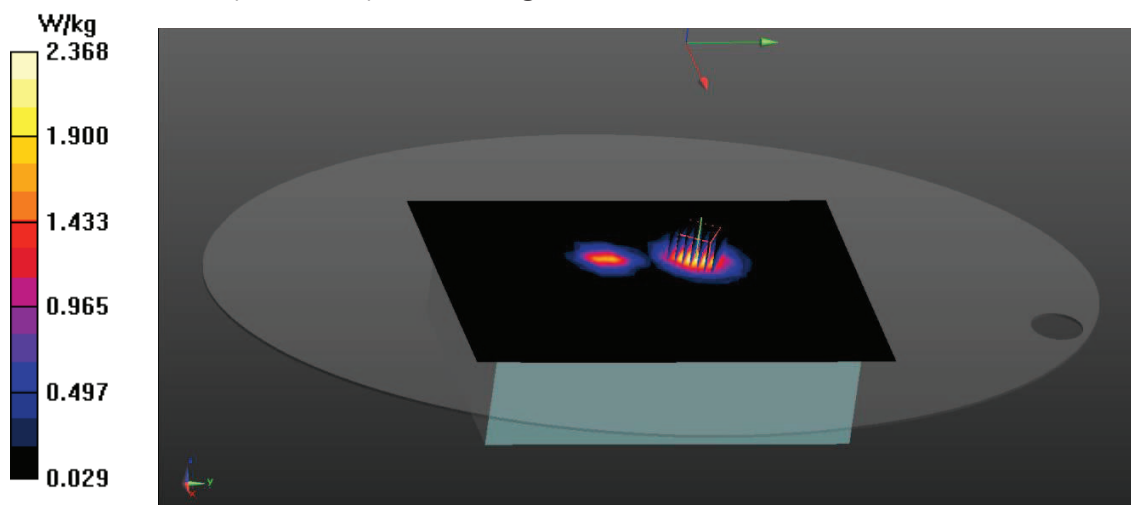
Zoom Scan (7x7x7)/Cube 0: Measurement grid: dx=5mm, dy=5mm, dz=5mm

Reference Value = 2.842 V/m; Power Drift = 0.06 dB

Peak SAR (extrapolated) = 2.93 W/kg

SAR(1 g) = 1.47 W/kg; SAR(10 g) = 0.748 W/kg

Maximum value of SAR (measured) = 2.37 W/kg



Date: 6/2/2023

Test Laboratory: Intertek Service

5G N20 MIMO_rear Side_CH 5785-ANT2

Communication System: UID 0, WiFi 802.11 nHT20 (0); Frequency: 5785 MHz; Duty Cycle: 1:1

Medium: 5G Head Medium parameters used: $f = 5785$ MHz; $\sigma = 5.109$ S/m; $\epsilon_r = 33.968$; $\rho = 1000$ kg/m³

Phantom section: Flat Section

Ambient Temperature: 22.0 °C; Liquid Temperature: 21.5 °C

DASY Configuration:

Probe: EX3DV4 - SN7322; ConvF(4.9, 4.9, 4.9) @ 5785 MHz; Calibrated: 2/28/2023

Sensor-Surface: 1.4mm (Mechanical Surface Detection)

Electronics: DAE4 Sn1473; Calibrated: 2/8/2023

Phantom: ELI V6.0 (20deg probe tilt); Type: QD OVA 003 AA; Serial: 2033

DASY52 52.10.1(1476); SEMCAD X 14.6.11(7439)

Area Scan (21x29x1): Measurement grid: dx=10mm, dy=10mm

Maximum value of SAR (measured) = 2.62 W/kg

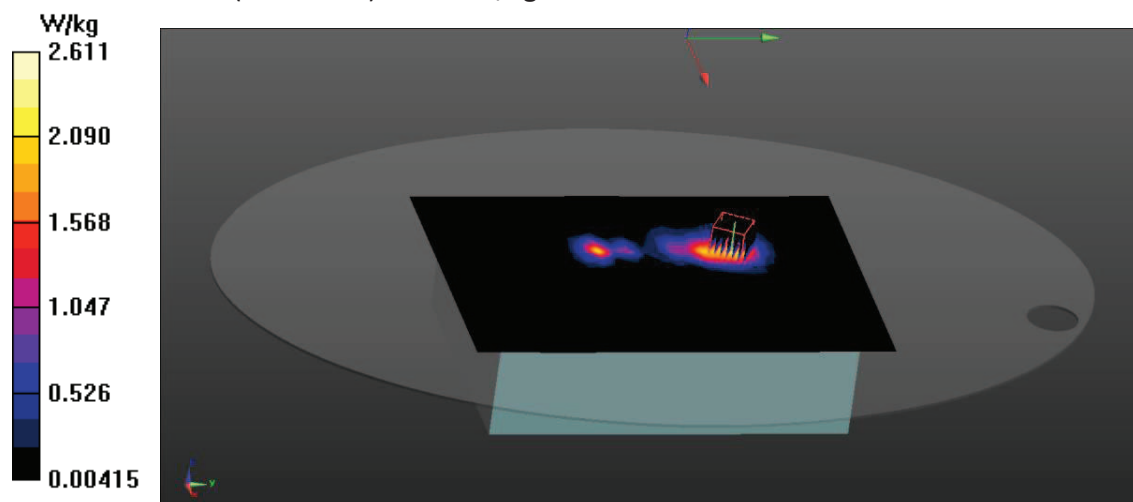
Zoom Scan (7x7x12)/Cube 0: Measurement grid: dx=4mm, dy=4mm, dz=2mm

Reference Value = 0 V/m; Power Drift = 0.01 dB

Peak SAR (extrapolated) = 4.63 W/kg

SAR(1 g) = 1.15 W/kg; SAR(10 g) = 0.454 W/kg

Maximum value of SAR (measured) = 2.61 W/kg



ANNEX D: SYSTEM VALIDATION

The SAR system must be validated against its performance specifications before it is deployed. When SAR probes, system components or software are changed, upgraded or recalibrated, these must be validated with the SAR system(s) that operates with such components.

Justification for Extended SAR Dipole Calibrations

Usage of SAR dipoles calibrated less than 3 years ago but more than 1 year ago were confirmed in maintaining return loss (≤ 20 dB, within 20% of prior calibration) and impedance (within 5 ohm from prior calibration) requirements per extended calibrations in KDB 865664 D01:

Table D.1: Antenna Parameters with Body Tissue Simulating Liquid

Table D.1: System Validation Part 1

Dipole D2450V2 SN: 966				
Head Liquid				
Date of Measurement	Return Loss(dB)	Δ %	Impedance (Ω)	$\Delta\Omega$
2021-10-21	-26.0	-	54.2+3.04j	-
2022-09-20	-25.5	-0.5	54.9+2.25j	0.7

Dipole D5GV2 SN: 1218				
Head Liquid				
Date of Measurement	Return Loss(dB)	Δ %	Impedance (Ω)	$\Delta\Omega$
2021-10-15	-22.1	-	56.3+5.56j	-
2022-09-20	-21.7	-0.4	56.9+5.17j	0.6

Table D.2: System Validation Part 2

System No.	Probe SN.	Liquid name	Validation date	Frequency point	Permittivity ϵ	Conductivity σ (S/m)
1	966	Head	4/27/2023	2450MHz	40.19	1.86
2	1218	Head	4/27/2023	5800MHz	0.93	0.38

Table D.3: System Validation Part 3

CW Validation	Sensitivity	PASS	PASS
	Probe linearity	PASS	PASS
	Probe Isotropy	PASS	PASS
Mod. Validation	MOD.type	QPSK	QPSK
	Duty factor	PASS	PASS
	PAR	PASS	PASS

ANNEX E: PROBE, DAE and DIPOLE CALIBRATION CERTIFICATE



Add: No.52 HuaYuanBei Road, Haidian District, Beijing, 100191, China
Tel: +86-10-62304633-2117
E-mail: emf@caict.ac.cn http://www.caict.ac.cn



中国认可
国际互认
校准
CALIBRATION
CNAS L0570

Client **Intertek**

Certificate No: **Z23-60067**

CALIBRATION CERTIFICATE

Object **EX3DV4 - SN : 7322**

Calibration Procedure(s) **FF-Z11-004-02**
Calibration Procedures for Dosimetric E-field Probes

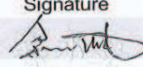

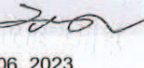
Calibration date: **February 28, 2023**

This calibration Certificate documents the traceability to national standards, which realize the physical units of measurements(SI). The measurements and the uncertainties with confidence probability are given on the following pages and are part of the certificate.

All calibrations have been conducted in the closed laboratory facility: environment temperature(22±3)°C and humidity<70%.

Calibration Equipment used (M&TE critical for calibration)

Primary Standards	ID #	Cal Date(Calibrated by, Certificate No.)	Scheduled Calibration
Power Meter NRP2	101919	14-Jun-22(CTTL, No.J22X04181)	Jun-23
Power sensor NRP-Z91	101547	14-Jun-22(CTTL, No.J22X04181)	Jun-23
Power sensor NRP-Z91	101548	14-Jun-22(CTTL, No.J22X04181)	Jun-23
Reference 10dBAttenuator	18N50W-10dB	19-Jan-23(CTTL, No.J23X00212)	Jan-25
Reference 20dBAttenuator	18N50W-20dB	19-Jan-23(CTTL, No.J23X00211)	Jan-25
Reference Probe EX3DV4	SN 3846	20-May-22(SPEAG, No.EX3-3846_May22)	May-23
DAE4	SN 1555	25-Aug-22(SPEAG, No.DAE4-1555_Aug22)	Aug-23
Secondary Standards	ID #	Cal Date(Calibrated by, Certificate No.)	Scheduled Calibration
SignalGenerator MG3700A	6201052605	14-Jun-22(CTTL, No.J22X04182)	Jun-23
Network Analyzer E5071C	MY46110673	10-Jan-23(CTTL, No.J23X00104)	Jan-24

	Name	Function	Signature
Calibrated by:	Yu Zongying	SAR Test Engineer	
Reviewed by:	Lin Hao	SAR Test Engineer	
Approved by:	Qi Dianyuan	SAR Project Leader	

Issued: March 06, 2023

This calibration certificate shall not be reproduced except in full without written approval of the laboratory.

Certificate No: Z23-60067

Page 1 of 9



In Collaboration with
s p e a g
CALIBRATION LABORATORY



Add: No.52 HuaYuanBei Road, Haidian District, Beijing, 100191, China
Tel: +86-10-62304633-2117
E-mail: emf@caict.ac.cn <http://www.caict.ac.cn>

Glossary:

TSL	tissue simulating liquid
NORM _{x,y,z}	sensitivity in free space
ConvF	sensitivity in TSL / NORM _{x,y,z}
DCP	diode compression point
CF	crest factor (1/duty_cycle) of the RF signal
A,B,C,D	modulation dependent linearization parameters
Polarization Φ	Φ rotation around probe axis
Polarization θ	θ rotation around an axis that is in the plane normal to probe axis (at measurement center), i $\theta=0$ is normal to probe axis

Connector Angle information used in DASY system to align probe sensor X to the robot coordinate system

Calibration is Performed According to the Following Standards:

- IEEE Std 1528-2013, "IEEE Recommended Practice for Determining the Peak Spatial-Averaged Specific Absorption Rate (SAR) in the Human Head from Wireless Communications Devices: Measurement Techniques", June 2013
- IEC 62209-1, "Measurement procedure for the assessment of Specific Absorption Rate (SAR) from hand-held and body-mounted devices used next to the ear (frequency range of 300 MHz to 6 GHz)", July 2016
- IEC 62209-2, "Procedure to determine the Specific Absorption Rate (SAR) for wireless communication devices used in close proximity to the human body (frequency range of 30 MHz to 6 GHz)", March 2010
- KDB 865664, "SAR Measurement Requirements for 100 MHz to 6 GHz"

Methods Applied and Interpretation of Parameters:

- NORM_{x,y,z}: Assessed for E-field polarization $\theta=0$ ($f \leq 900$ MHz in TEM-cell; $f > 1800$ MHz: waveguide). NORM_{x,y,z} are only intermediate values, i.e., the uncertainties of NORM_{x,y,z} does not effect the E^2 -field uncertainty inside TSL (see below ConvF).
- NORM(f)_{x,y,z} = NORM_{x,y,z} * frequency_response (see Frequency Response Chart). This linearization is implemented in DASY4 software versions later than 4.2. The uncertainty of the frequency response is included in the stated uncertainty of ConvF.
- DCP_{x,y,z}: DCP are numerical linearization parameters assessed based on the data of power sweep (no uncertainty required). DCP does not depend on frequency nor media.
- PAR: PAR is the Peak to Average Ratio that is not calibrated but determined based on the signal characteristics.
- A_{x,y,z}; B_{x,y,z}; C_{x,y,z}; VR_{x,y,z}; A,B,C are numerical linearization parameters assessed based on the data of power sweep for specific modulation signal. The parameters do not depend on frequency nor media. VR is the maximum calibration range expressed in RMS voltage across the diode.
- ConvF and Boundary Effect Parameters: Assessed in flat phantom using E-field (or Temperature Transfer Standard for $f \leq 800$ MHz) and inside waveguide using analytical field distributions based on power measurements for $f > 800$ MHz. The same setups are used for assessment of the parameters applied for boundary compensation (alpha, depth) of which typical uncertainty valued are given. These parameters are used in DASY4 software to improve probe accuracy close to the boundary. The sensitivity in TSL corresponds to NORM_{x,y,z} * ConvF whereby the uncertainty corresponds to that given for ConvF. A frequency dependent ConvF is used in DASY version 4.4 and higher which allows extending the validity from ± 50 MHz to ± 100 MHz.
- Spherical isotropy (3D deviation from isotropy): in a field of low gradients realized using a flat phantom exposed by a patch antenna.
- Sensor Offset: The sensor offset corresponds to the offset of virtual measurement center from the probe tip (on probe axis). No tolerance required.
- Connector Angle: The angle is assessed using the information gained by determining the NORM_x (no uncertainty required).

Certificate No: Z23-60067

Page 2 of 9



In Collaboration with
s p e a g
CALIBRATION LABORATORY



Add: No.52 HuaYuanBei Road, Haidian District, Beijing, 100191, China
Tel: +86-10-62304633-2117
E-mail: emf@caict.ac.cn <http://www.caict.ac.cn>

DASY/EASY – Parameters of Probe: EX3DV4 – SN:7322

Basic Calibration Parameters

	Sensor X	Sensor Y	Sensor Z	Unc (k=2)
Norm($\mu V/(V/m)^2$) ^A	0.45	0.56	0.53	±10.0%
DCP(mV) ^B	96.4	96.1	98.7	

Modulation Calibration Parameters

UID	Communication System Name		A dB	B dB· μV	C	D dB	VR mV	Unc ^E (k=2)
0	CW	X	0.0	0.0	1.0	0.00	161.1	±2.0%
		Y	0.0	0.0	1.0		177.2	
		Z	0.0	0.0	1.0		175.7	

The reported uncertainty of measurement is stated as the standard uncertainty of Measurement multiplied by the coverage factor $k=2$, which for a normal distribution Corresponds to a coverage probability of approximately 95%.

^A The uncertainties of Norm X, Y, Z do not affect the E²-field uncertainty inside TSL (see Page 4).

^B Numerical linearization parameter: uncertainty not required.

^E Uncertainty is determined using the max. deviation from linear response applying rectangular distribution and is expressed for the square of the field value.



In Collaboration with
Add: No.52 HuaYuanBei Road, Haidian District, Beijing, 100191, China
Tel: +86-10-62304633-2117
E-mail: emf@caict.ac.cn http://www.caict.ac.cn



DASY/EASY – Parameters of Probe: EX3DV4 – SN:7322

Calibration Parameter Determined in Head Tissue Simulating Media

f [MHz] ^C	Relative Permittivity ^F	Conductivity (S/m) ^F	ConvF X	ConvF Y	ConvF Z	Alpha ^G	Depth ^G (mm)	Unct. (k=2)
750	41.9	0.89	10.18	10.18	10.18	0.19	1.15	±12.7%
835	41.5	0.90	9.81	9.81	9.81	0.12	1.56	±12.7%
1750	40.1	1.37	8.36	8.36	8.36	0.25	1.02	±12.7%
1900	40.0	1.40	8.05	8.05	8.05	0.26	1.03	±12.7%
2300	39.5	1.67	7.77	7.77	7.77	0.65	0.68	±12.7%
2450	39.2	1.80	7.50	7.50	7.50	0.60	0.68	±12.7%
2600	39.0	1.96	7.30	7.30	7.30	0.52	0.79	±12.7%
5250	35.9	4.71	5.38	5.38	5.38	0.45	1.30	±13.9%
5600	35.5	5.07	4.81	4.81	4.81	0.50	1.30	±13.9%
5750	35.4	5.22	4.90	4.90	4.90	0.50	1.30	±13.9%

^C Frequency validity above 300 MHz of ±100MHz only applies for DASY v4.4 and higher (Page 2), else it is restricted to ±50MHz. The uncertainty is the RSS of ConvF uncertainty at calibration frequency and the uncertainty for the indicated frequency band. Frequency validity below 300 MHz is ± 10, 25, 40, 50 and 70 MHz for ConvF assessments at 30, 64, 128, 150 and 220 MHz respectively. Above 5 GHz frequency validity can be extended to ± 110 MHz.

^F At frequency up to 6 GHz, the validity of tissue parameters (ϵ and σ) can be relaxed to ±10% if liquid compensation formula is applied to measured SAR values. The uncertainty is the RSS of the ConvF uncertainty for indicated target tissue parameters.

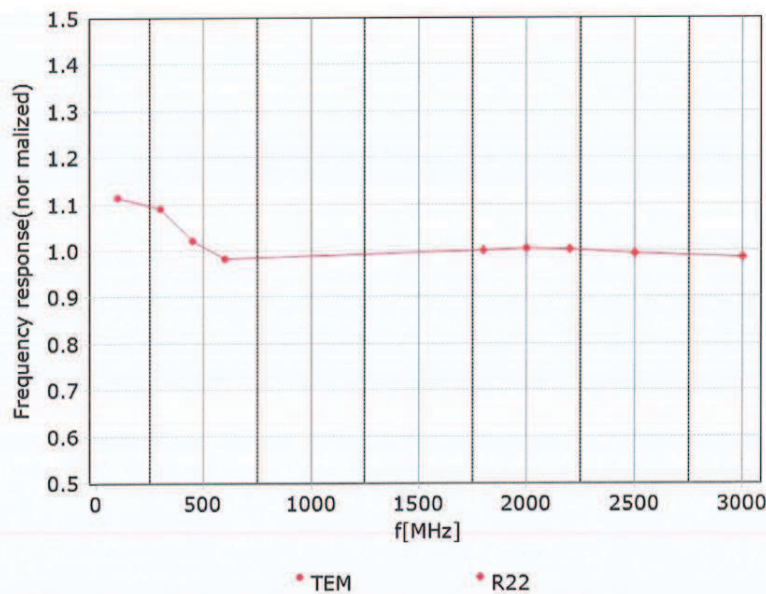
^G Alpha/Depth are determined during calibration. SPEAG warrants that the remaining deviation due to the boundary effect after compensation is always less than ± 1% for frequencies below 3 GHz and below ± 2% for the frequencies between 3-6 GHz at any distance larger than half the probe tip diameter from the boundary.



In Collaboration with
Add: No.52 HuaYuanBei Road, Haidian District, Beijing, 100191, China
Tel: +86-10-62304633-2117
E-mail: emf@caict.ac.cn <http://www.caict.ac.cn>



Frequency Response of E-Field (TEM-Cell: ifi110 EXX, Waveguide: R22)



Uncertainty of Frequency Response of E-field: $\pm 7.4\%$ ($k=2$)



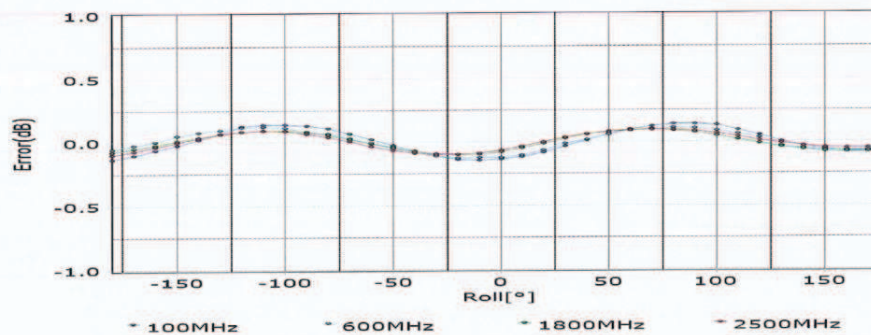
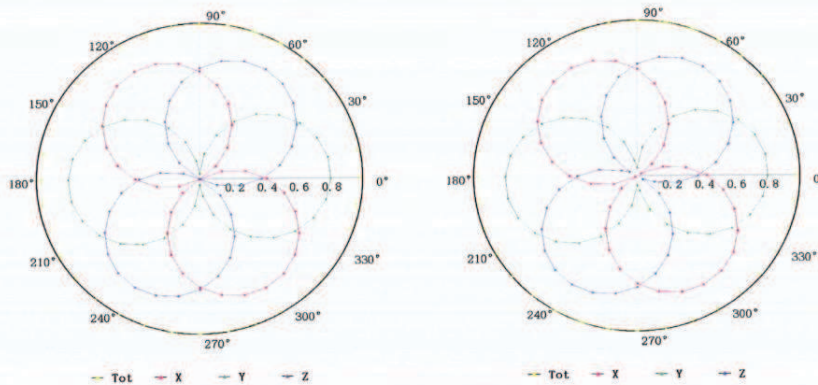
Add: No.52 HuaYuanBei Road, Haidian District, Beijing, 100191, China
Tel: +86-10-62304633-2117
E-mail: cmf@caict.ac.cn <http://www.caict.ac.cn>



Receiving Pattern (Φ), $\theta=0^\circ$

f=600 MHz, TEM

f=1800 MHz, R22



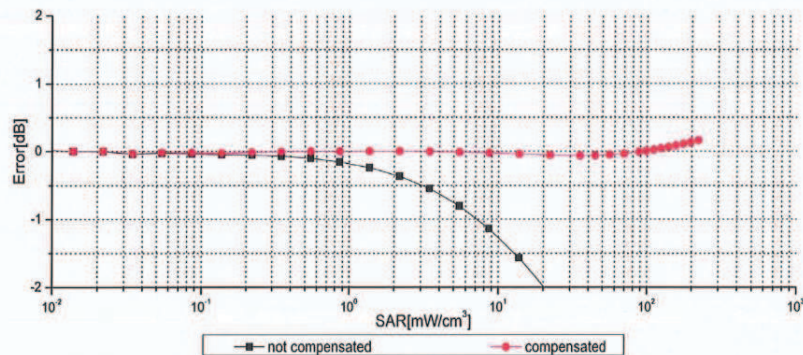
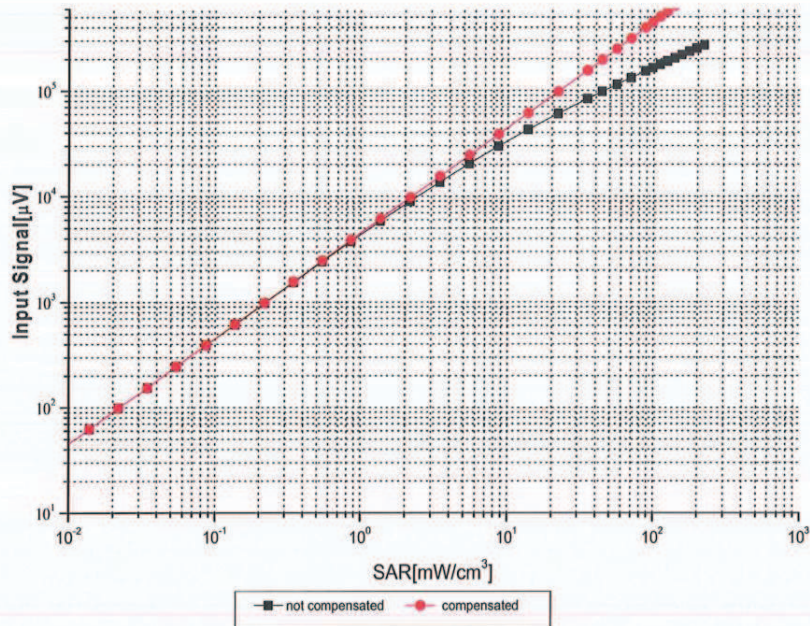
Uncertainty of Axial Isotropy Assessment: $\pm 1.2\%$ ($k=2$)



Add: No.52 HuaYuanBei Road, Haidian District, Beijing, 100191, China
Tel: +86-10-62304633-2117
E-mail: emf@caict.ac.cn <http://www.caict.ac.cn>



Dynamic Range f(SAR_{head}) (TEM cell, f = 900 MHz)



Uncertainty of Linearity Assessment: $\pm 0.9\%$ ($k=2$)

Certificate No:Z23-60067

Page 7 of 9



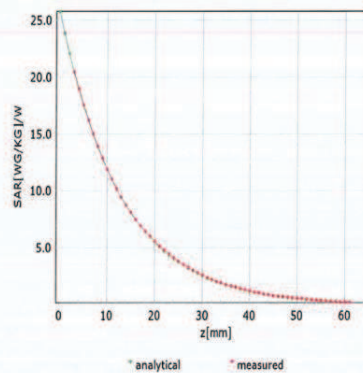
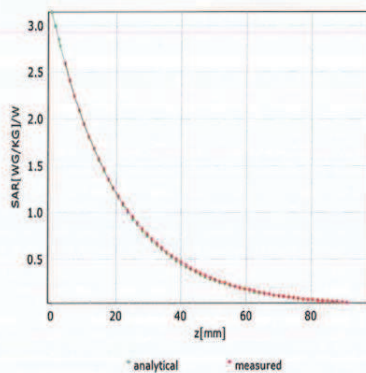
Add: No.52 HuaYuanBei Road, Haidian District, Beijing, 100191, China
Tel: +86-10-62304633-2117
E-mail: emf@caict.ac.cn <http://www.caict.ac.cn>



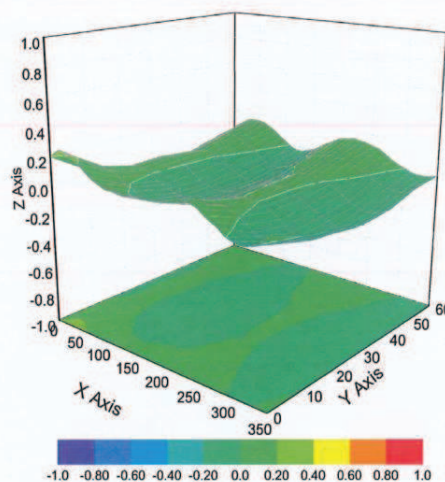
Conversion Factor Assessment

f=750 MHz,WGLS R9(H_convF)

f=1750 MHz,WGLS R22(H_convF)



Deviation from Isotropy in Liquid



Uncertainty of Spherical Isotropy Assessment: $\pm 3.2\%$ ($k=2$)



In Collaboration with

s p e a g
CALIBRATION LABORATORY



Add: No.52 HuaYuanBei Road, Haidian District, Beijing, 100191, China
Tel: +86-10-62304633-2117
E-mail: emf@caict.ac.cn <http://www.caict.ac.cn>

DASY/EASY – Parameters of Probe: EX3DV4 – SN:7322

Other Probe Parameters

Sensor Arrangement	Triangular
Connector Angle (°)	41.2
Mechanical Surface Detection Mode	enabled
Optical Surface Detection Mode	disable
Probe Overall Length	337mm
Probe Body Diameter	10mm
Tip Length	9mm
Tip Diameter	2.5mm
Probe Tip to Sensor X Calibration Point	1mm
Probe Tip to Sensor Y Calibration Point	1mm
Probe Tip to Sensor Z Calibration Point	1mm
Recommended Measurement Distance from Surface	1.4mm



Add: No.52 HuaYuanBei Road, Haidian District, Beijing, 100191, China
Tel: +86-10-62304633-2117
E-mail: emf@caict.ac.cn <http://www.caict.ac.cn>



中国认可
国际互认
校准
CALIBRATION
CNAS L0570

Client : Intertek

Certificate No: Z23-60066

CALIBRATION CERTIFICATE

Object DAE4 - SN: 1473

Calibration Procedure(s) FF-Z11-002-01
Calibration Procedure for the Data Acquisition Electronics (DAEx)

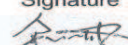


Calibration date: February 08, 2023

This calibration Certificate documents the traceability to national standards, which realize the physical units of measurements(SI). The measurements and the uncertainties with confidence probability are given on the following pages and are part of the certificate.

All calibrations have been conducted in the closed laboratory facility: environment temperature(22±3)°C and humidity<70%.

Calibration Equipment used (M&TE critical for calibration)

Primary Standards	ID #	Cal Date(Calibrated by, Certificate No.)	Scheduled Calibration
Process Calibrator 753	1971018	14-Jun-22 (CTTL, No.J22X04180)	Jun-23

	Name	Function	Signature
Calibrated by:	Yu Zongying	SAR Test Engineer	
Reviewed by:	Lin Hao	SAR Test Engineer	
Approved by:	Qi Dianyuan	SAR Project Leader	

Issued: February 14, 2023

This calibration certificate shall not be reproduced except in full without written approval of the laboratory.



In Collaboration with
s p e a g
CALIBRATION LABORATORY



Add: No.52 HuaYuanBei Road, Haidian District, Beijing, 100191, China
Tel: +86-10-62304633-2117
E-mail: emf@caict.ac.cn <http://www.caict.ac.cn>

Glossary:

DAE data acquisition electronics
Connector angle information used in DASY system to align probe sensor X to the robot coordinate system.

Methods Applied and Interpretation of Parameters:

- *DC Voltage Measurement:* Calibration Factor assessed for use in DASY system by comparison with a calibrated instrument traceable to national standards. The figure given corresponds to the full scale range of the voltmeter in the respective range.
- *Connector angle:* The angle of the connector is assessed measuring the angle mechanically by a tool inserted. Uncertainty is not required.
- The report provide only calibration results for DAE, it does not contain other performance test results.



In Collaboration with
s p e a g
CALIBRATION LABORATORY



Add: No.52 HuaYuanBei Road, Haidian District, Beijing, 100191, China
Tel: +86-10-62304633-2117
E-mail: emf@caict.ac.cn <http://www.caict.ac.cn>

DC Voltage Measurement

A/D - Converter Resolution nominal

High Range: 1LSB = 6.1μV, full range = -100...+300 mV

Low Range: 1LSB = 61nV, full range = -1.....+3mV

DASY measurement parameters: Auto Zero Time: 3 sec; Measuring time: 3 sec

Calibration Factors	X	Y	Z
High Range	403.996 ± 0.15% (k=2)	404.591 ± 0.15% (k=2)	404.442 ± 0.15% (k=2)
Low Range	3.96367 ± 0.7% (k=2)	3.99493 ± 0.7% (k=2)	3.98866 ± 0.7% (k=2)

Connector Angle

Connector Angle to be used in DASY system	346° ± 1 °
---	------------