

Measurement Report for Device, BACK, GSM 850, UID 10028 DAC, Channel 190 (836.600MHz)

Device under Test Properties

Model, Manufacturer	Dimensions [mm]	IMEI	DUT Type
Device,	200.0 x 100.0 x 120.0		Mobile Station

Exposure Conditions

Phantom Section, TSL	Position, Test Distance [mm]	Band	Group, UID	Frequency [MHz], Channel Number	Conversion Factor	TSL Conductivity [S/m]	TSL Permittivity
Flat, Head Simulating Liquid	BACK, 0.00	GSM 850	GSM, 10028-DAC	836.600, 190	9.97	0.891	42.1

Hardware Setup

Phantom	TSL, Measured Date	Probe, Calibration Date	DAE, Calibration Date
Twin-SAM V8.0 (30deg probe tilt) - 2100	HBBL-600-10000 Charge:xxxx, 2025-06-26	EX3DV4 - SN7383, 2025-03-14	DAE4 Sn1318, 2024-10-09

Scan Setup

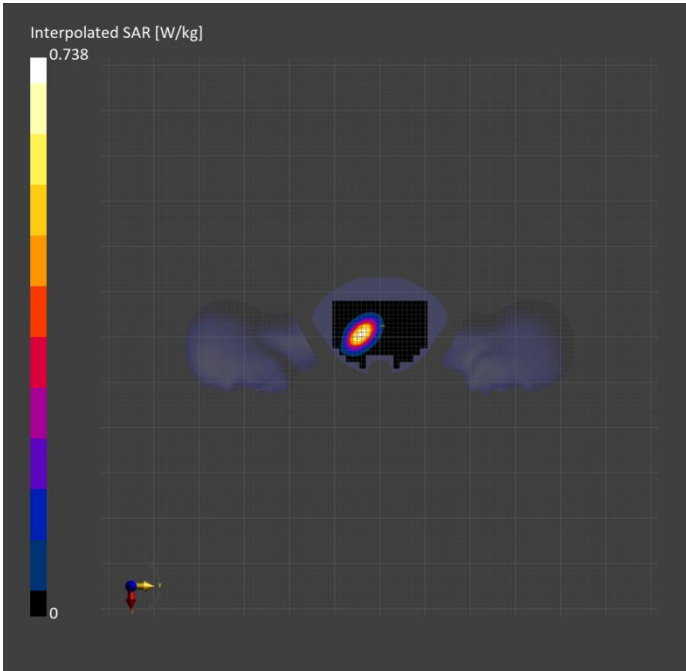
	Area Scan	Zoom Scan
Grid Extents [mm]	150.0 x 200.0	30.0 x 30.0 x 30.0
Grid Steps [mm]	15.0 x 15.0	6.0 x 6.0 x 1.5
Sensor Surface [mm]	3.0	1.4
Graded Grid	N/A	Yes
Grading Ratio	N/A	1.5
MAIA	N/A	N/A
Surface Detection	VMS + 6p	VMS + 6p
Scan Method	Measured	Measured

Measurement Results

	Area Scan	Zoom Scan
Date	2025-06-26, 17:15	2025-06-26, 17:21
psSAR1g [W/kg]	0.638	0.652
psSAR10g [W/kg]	0.421	0.429
Power Drift [dB]	-0.01	-0.00
Power Scaling	Disabled	Disabled
Scaling Factor [dB]		
TSL Correction	No correction	No correction
M2/M1 [%]		84.9
Dist 3dB Peak [mm]		17.4

Warning(s) / Error(s)

Details	Area Scan	Zoom Scan
Warning(s)		
Error(s)		



Device under Test Properties

Model, Manufacturer	Dimensions [mm]	IMEI	DUT Type
Device,	200.0 x 100.0 x 120.0		Mobile Station

Exposure Conditions

Phantom Section, TSL	Position, Test Distance [mm]	Band	Group, UID	Frequency [MHz], Channel Number	Conversion Factor	TSL Conductivity [S/m]	TSL Permittivity
Flat, Head Simulating Liquid	EDGE LEFT, 0.00	PCS 1900	GSM, 10027-DAC	1909.800, 810	8.4	1.42	39.9

Hardware Setup

Phantom	TSL, Measured Date	Probe, Calibration Date	DAE, Calibration Date
Twin-SAM V8.0 (30deg probe tilt) - 2100	HBBL-600-10000 Charge:xxxx, 2025-06-26	EX3DV4 - SN7383, 2025-03-14	DAE4 Sn1318, 2024-10-09

Scan Setup

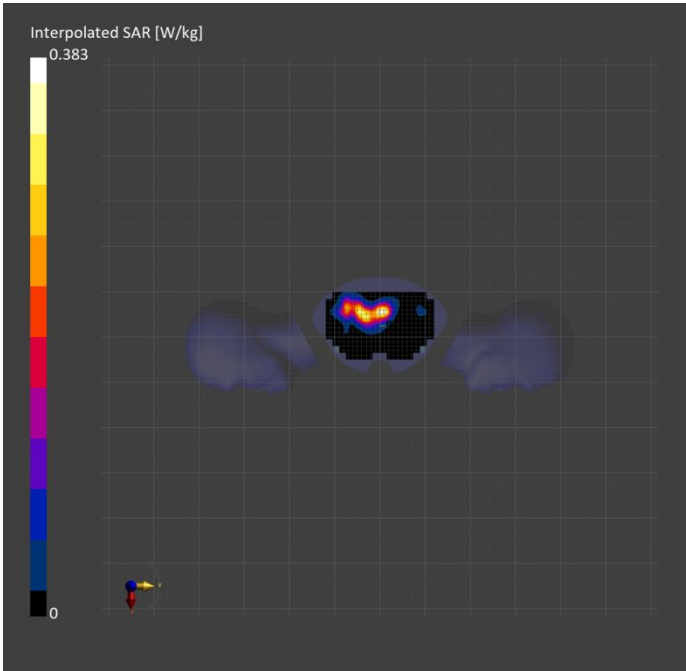
	Area Scan	Zoom Scan
Grid Extents [mm]	150.0 x 240.0	30.0 x 30.0 x 30.0
Grid Steps [mm]	15.0 x 15.0	6.0 x 6.0 x 1.5
Sensor Surface [mm]	3.0	1.4
Graded Grid	N/A	Yes
Grading Ratio	N/A	1.5
MAIA	N/A	N/A
Surface Detection	VMS + 6p	VMS + 6p
Scan Method	Measured	Measured

Measurement Results

	Area Scan	Zoom Scan
Date	2025-06-26, 18:16	2025-06-26, 18:23
psSAR1g [W/kg]	0.314	0.333
psSAR10g [W/kg]	0.174	0.185
Power Drift [dB]	0.03	-0.07
Power Scaling	Disabled	Disabled
Scaling Factor [dB]		
TSL Correction	No correction	No correction
M2/M1 [%]		82.8
Dist 3dB Peak [mm]		13.7

Warning(s) / Error(s)

Details	Area Scan	Zoom Scan
Warning(s)		
Error(s)		



Device under Test Properties

Model, Manufacturer	Dimensions [mm]	IMEI	DUT Type
Device,	200.0 x 100.0 x 120.0		Mobile Station

Exposure Conditions

Phantom Section, TSL	Position, Test Distance [mm]	Band	Group, UID	Frequency [MHz], Channel Number	Conversion Factor	TSL Conductivity [S/m]	TSL Permittivity
Flat, Head Simulating Liquid	EDGE LEFT, 0.00	Band 2	WCDMA, 10011-CAC	1880.000, 9400	8.4	1.42	39.9

Hardware Setup

Phantom	TSL, Measured Date	Probe, Calibration Date	DAE, Calibration Date
Twin-SAM V8.0 (30deg probe tilt) - 2100	HBBL-600-10000 Charge:xxxx, 2025-06-27	EX3DV4 - SN7383, 2025-03-14	DAE4 Sn1318, 2024-10-09

Scan Setup

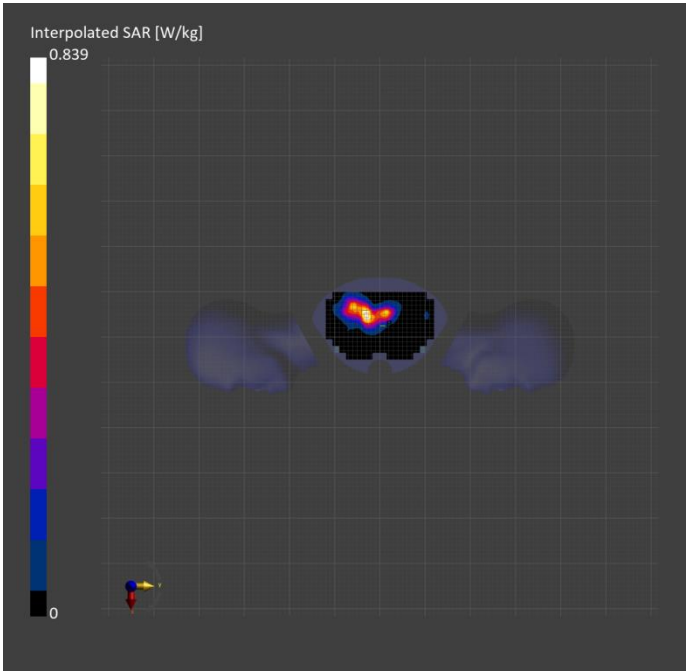
	Area Scan	Zoom Scan
Grid Extents [mm]	150.0 x 240.0	30.0 x 30.0 x 30.0
Grid Steps [mm]	15.0 x 15.0	6.0 x 6.0 x 1.5
Sensor Surface [mm]	3.0	1.4
Graded Grid	N/A	Yes
Grading Ratio	N/A	1.5
MAIA	N/A	N/A
Surface Detection	VMS + 6p	VMS + 6p
Scan Method	Measured	Measured

Measurement Results

	Area Scan	Zoom Scan
Date	2025-06-27, 14:53	2025-06-27, 15:05
psSAR1g [W/kg]	0.692	0.756
psSAR10g [W/kg]	0.387	0.427
Power Drift [dB]	-0.02	-0.01
Power Scaling	Disabled	Disabled
Scaling Factor [dB]		
TSL Correction	No correction	No correction
M2/M1 [%]		84.7
Dist 3dB Peak [mm]		12.4

Warning(s) / Error(s)

Details	Area Scan	Zoom Scan
Warning(s)		
Error(s)		



Device under Test Properties

Model, Manufacturer	Dimensions [mm]	IMEI	DUT Type
Device,	200.0 x 100.0 x 120.0		Mobile Station

Exposure Conditions

Phantom Section, TSL	Position, Test Distance [mm]	Band	Group, UID	Frequency [MHz], Channel Number	Conversion Factor	TSL Conductivity [S/m]	TSL Permittivity
Flat, Head Simulating Liquid	FRONT, 0.00	Band 4	WCDMA, 10011-CAC	1732.600, 1413	8.7	1.31	40.7

Hardware Setup

Phantom	TSL, Measured Date	Probe, Calibration Date	DAE, Calibration Date
Twin-SAM V8.0 (30deg probe tilt) - 2100	HBBL-600-10000 Charge:xxxx, 2025-06-27	EX3DV4 - SN7383, 2025-03-14	DAE4 Sn1318, 2024-10-09

Scan Setup

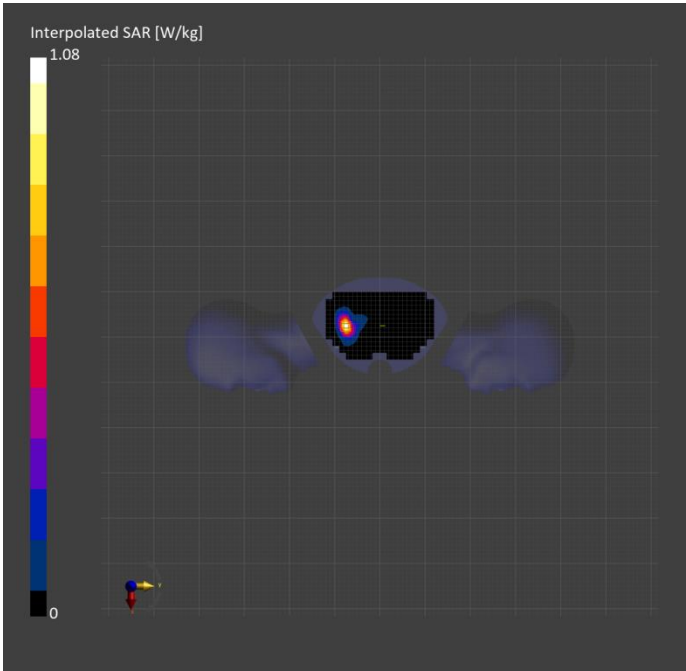
	Area Scan	Zoom Scan
Grid Extents [mm]	150.0 x 240.0	30.0 x 30.0 x 30.0
Grid Steps [mm]	15.0 x 15.0	6.0 x 6.0 x 1.5
Sensor Surface [mm]	3.0	1.4
Graded Grid	N/A	Yes
Grading Ratio	N/A	1.5
MAIA	N/A	N/A
Surface Detection	VMS + 6p	VMS + 6p
Scan Method	Measured	Measured

Measurement Results

	Area Scan	Zoom Scan
Date	2025-06-27, 15:18	2025-06-27, 15:24
psSAR1g [W/kg]	0.846	0.871
psSAR10g [W/kg]	0.448	0.481
Power Drift [dB]	0.02	0.01
Power Scaling	Disabled	Disabled
Scaling Factor [dB]		
TSL Correction	No correction	No correction
M2/M1 [%]		87.2
Dist 3dB Peak [mm]		11.4

Warning(s) / Error(s)

Details	Area Scan	Zoom Scan
Warning(s)		
Error(s)		



Device under Test Properties

Model, Manufacturer	Dimensions [mm]	IMEI	DUT Type
Device,	200.0 x 100.0 x 120.0		Mobile Station

Exposure Conditions

Phantom Section, TSL	Position, Test Distance [mm]	Band	Group, UID	Frequency [MHz], Channel Number	Conversion Factor	TSL Conductivity [S/m]	TSL Permittivity
Flat, Head Simulating Liquid	BACK, 0.00	Band 5	WCDMA, 10011-CAC	836.600, 4183	9.97	0.891	42.1

Hardware Setup

Phantom	TSL, Measured Date	Probe, Calibration Date	DAE, Calibration Date
Twin-SAM V8.0 (30deg probe tilt) - 2100	HBBL-600-10000 Charge:xxxx, 2025-06-27	EX3DV4 - SN7383, 2025-03-14	DAE4 Sn1318, 2024-10-09

Scan Setup

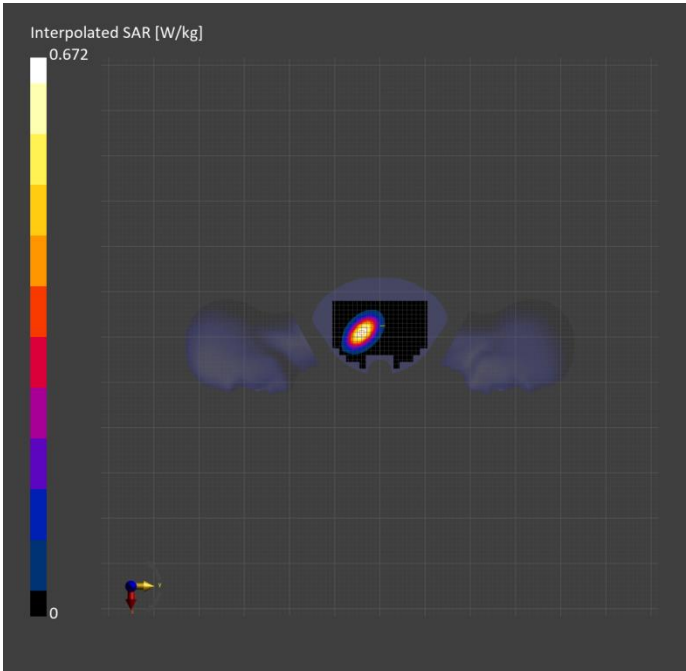
	Area Scan	Zoom Scan
Grid Extents [mm]	150.0 x 200.0	30.0 x 30.0 x 30.0
Grid Steps [mm]	15.0 x 15.0	6.0 x 6.0 x 1.5
Sensor Surface [mm]	3.0	1.4
Graded Grid	N/A	Yes
Grading Ratio	N/A	1.5
MAIA	N/A	N/A
Surface Detection	VMS + 6p	VMS + 6p
Scan Method	Measured	Measured

Measurement Results

	Area Scan	Zoom Scan
Date	2025-06-27, 13:39	2025-06-27, 13:46
psSAR1g [W/kg]	0.586	0.618
psSAR10g [W/kg]	0.390	0.405
Power Drift [dB]	0.09	-0.02
Power Scaling	Disabled	Disabled
Scaling Factor [dB]		
TSL Correction	No correction	No correction
M2/M1 [%]		85.4
Dist 3dB Peak [mm]		17.0

Warning(s) / Error(s)

Details	Area Scan	Zoom Scan
Warning(s)		
Error(s)		



Device under Test Properties

Model, Manufacturer	Dimensions [mm]	IMEI	DUT Type
Device,	200.0 x 100.0 x 120.0		Mobile Station

Exposure Conditions

Phantom Section, TSL	Position, Test Distance [mm]	Band	Group, UID	Frequency [MHz], Channel Number	Conversion Factor	TSL Conductivity [S/m]	TSL Permittivity
Flat, Head Simulating Liquid	EDGE LEFT, 0.00	Band 2	LTE-FDD, 10169-CAF	1900.000, 19100	8.4	1.40	39.8

Hardware Setup

Phantom	TSL, Measured Date	Probe, Calibration Date	DAE, Calibration Date
Twin-SAM V8.0 (30deg probe tilt) - 2100	HBBL-600-10000 Charge:xxxx, 2025-06-30	EX3DV4 - SN7383, 2025-03-14	DAE4 Sn1318, 2024-10-09

Scan Setup

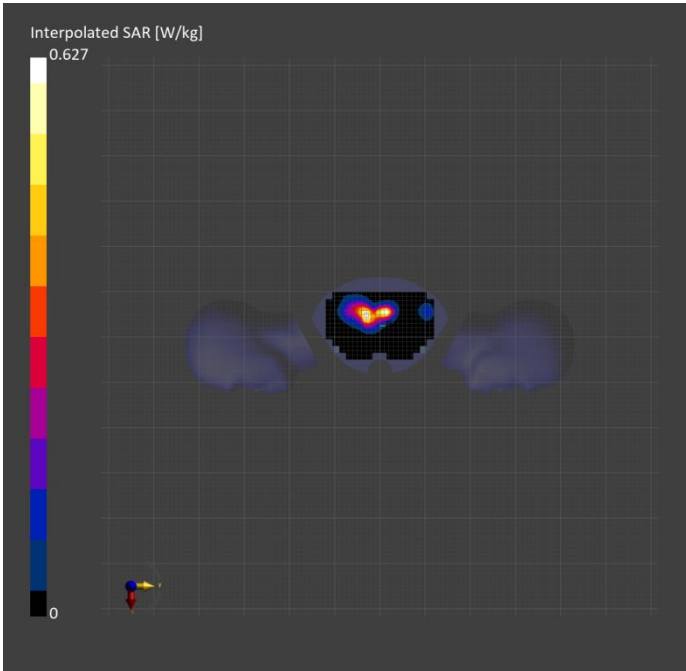
	Area Scan	Zoom Scan
Grid Extents [mm]	150.0 x 240.0	30.0 x 30.0 x 30.0
Grid Steps [mm]	15.0 x 15.0	6.0 x 6.0 x 1.5
Sensor Surface [mm]	3.0	1.4
Graded Grid	N/A	Yes
Grading Ratio	N/A	1.5
MAIA	N/A	N/A
Surface Detection	VMS + 6p	VMS + 6p
Scan Method	Measured	Measured

Measurement Results

	Area Scan	Zoom Scan
Date	2025-06-30, 15:59	2025-06-30, 16:05
psSAR1g [W/kg]	0.523	0.594
psSAR10g [W/kg]	0.295	0.331
Power Drift [dB]	0.05	0.12
Power Scaling	Disabled	Disabled
Scaling Factor [dB]		
TSL Correction	No correction	No correction
M2/M1 [%]		84.5
Dist 3dB Peak [mm]		12.4

Warning(s) / Error(s)

Details	Area Scan	Zoom Scan
Warning(s)		
Error(s)		



Device under Test Properties

Model, Manufacturer	Dimensions [mm]	IMEI	DUT Type
Device,	200.0 x 100.0 x 120.0		Mobile Station

Exposure Conditions

Phantom Section, TSL	Position, Test Distance [mm]	Band	Group, UID	Frequency [MHz], Channel Number	Conversion Factor	TSL Conductivity [S/m]	TSL Permittivity
Flat, Head Simulating Liquid	FRONT, 0.00	Band 4	LTE-FDD, 10169-CAF	1720.000, 20050	8.7	1.32	40.9

Hardware Setup

Phantom	TSL, Measured Date	Probe, Calibration Date	DAE, Calibration Date
Twin-SAM V8.0 (30deg probe tilt) - 2100	HBBL-600-10000 Charge:xxxx, 2025-06-30	EX3DV4 - SN7383, 2025-03-14	DAE4 Sn1318, 2024-10-09

Scan Setup

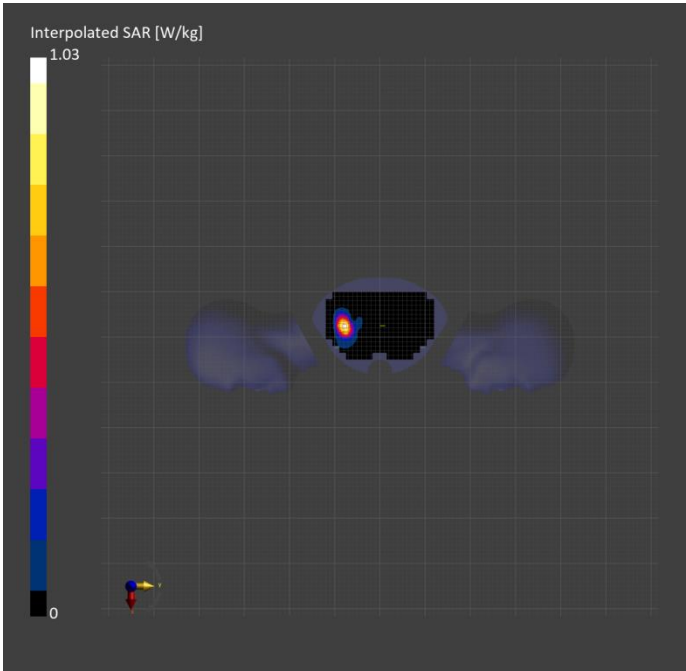
	Area Scan	Zoom Scan
Grid Extents [mm]	150.0 x 240.0	30.0 x 30.0 x 30.0
Grid Steps [mm]	15.0 x 15.0	6.0 x 6.0 x 1.5
Sensor Surface [mm]	3.0	1.4
Graded Grid	N/A	Yes
Grading Ratio	N/A	1.5
MAIA	N/A	N/A
Surface Detection	VMS + 6p	VMS + 6p
Scan Method	Measured	Measured

Measurement Results

	Area Scan	Zoom Scan
Date	2025-06-30, 17:00	2025-06-30, 17:06
psSAR1g [W/kg]	0.854	0.935
psSAR10g [W/kg]	0.476	0.516
Power Drift [dB]	0.00	0.00
Power Scaling	Disabled	Disabled
Scaling Factor [dB]		
TSL Correction	No correction	No correction
M2/M1 [%]		87.0
Dist 3dB Peak [mm]		11.9

Warning(s) / Error(s)

Details	Area Scan	Zoom Scan
Warning(s)		
Error(s)		



Device under Test Properties

Model, Manufacturer	Dimensions [mm]	IMEI	DUT Type
Device,	200.0 x 100.0 x 120.0		Mobile Station

Exposure Conditions

Phantom Section, TSL	Position, Test Distance [mm]	Band	Group, UID	Frequency [MHz], Channel Number	Conversion Factor	TSL Conductivity [S/m]	TSL Permittivity
Flat, Head Simulating Liquid	BACK, 0.00	Band 5	LTE-FDD, 10175-CAH	836.500, 20525	9.97	0.898	42.2

Hardware Setup

Phantom	TSL, Measured Date	Probe, Calibration Date	DAE, Calibration Date
Twin-SAM V8.0 (30deg probe tilt) - 2100	HBBL-600-10000 Charge:xxxx, 2025-06-30	EX3DV4 - SN7383, 2025-03-14	DAE4 Sn1318, 2024-10-09

Scan Setup

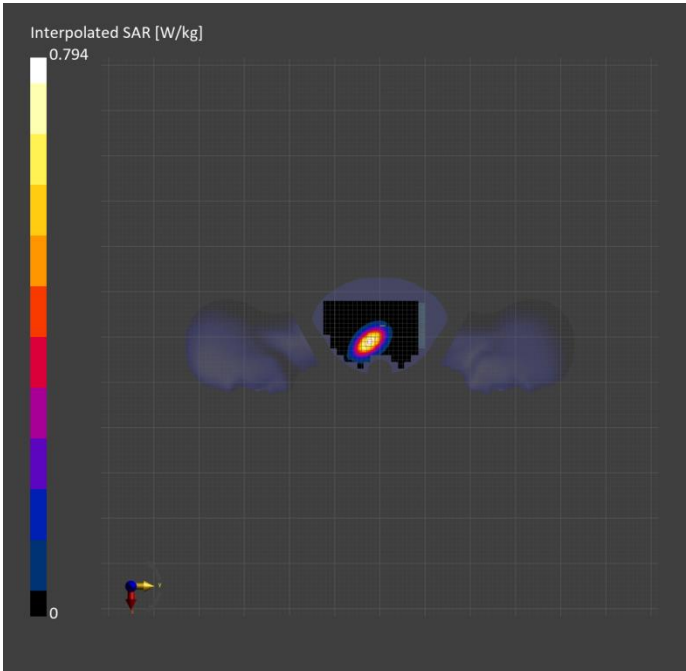
	Area Scan	Zoom Scan
Grid Extents [mm]	150.0 x 200.0	30.0 x 30.0 x 30.0
Grid Steps [mm]	15.0 x 15.0	6.0 x 6.0 x 1.5
Sensor Surface [mm]	3.0	1.4
Graded Grid	N/A	Yes
Grading Ratio	N/A	1.5
MAIA	N/A	N/A
Surface Detection	VMS + 6p	VMS + 6p
Scan Method	Measured	Measured

Measurement Results

	Area Scan	Zoom Scan
Date	2025-06-30, 14:06	2025-06-30, 14:13
psSAR1g [W/kg]	0.683	0.702
psSAR10g [W/kg]	0.448	0.458
Power Drift [dB]	-0.00	-0.13
Power Scaling	Disabled	Disabled
Scaling Factor [dB]		
TSL Correction	No correction	No correction
M2/M1 [%]		85.3
Dist 3dB Peak [mm]		17.0

Warning(s) / Error(s)

Details	Area Scan	Zoom Scan
Warning(s)		
Error(s)		



Device under Test Properties

Model, Manufacturer	Dimensions [mm]	IMEI	DUT Type
Device,	200.0 x 100.0 x 120.0		Mobile Station

Exposure Conditions

Phantom Section, TSL	Position, Test Distance [mm]	Band	Group, UID	Frequency [MHz], Channel Number	Conversion Factor	TSL Conductivity [S/m]	TSL Permittivity
Flat, Head Simulating Liquid	EDGE LEFT, 0.00	Band 7	LTE-FDD, 10169-CAF	2560.000, 21350	7.69	1.88	39.9

Hardware Setup

Phantom	TSL, Measured Date	Probe, Calibration Date	DAE, Calibration Date
Twin-SAM V8.0 (30deg probe tilt) - 2100	HBBL-600-10000 Charge:xxxx, 2025-06-30	EX3DV4 - SN7383, 2025-03-14	DAE4 Sn1318, 2024-10-09

Scan Setup

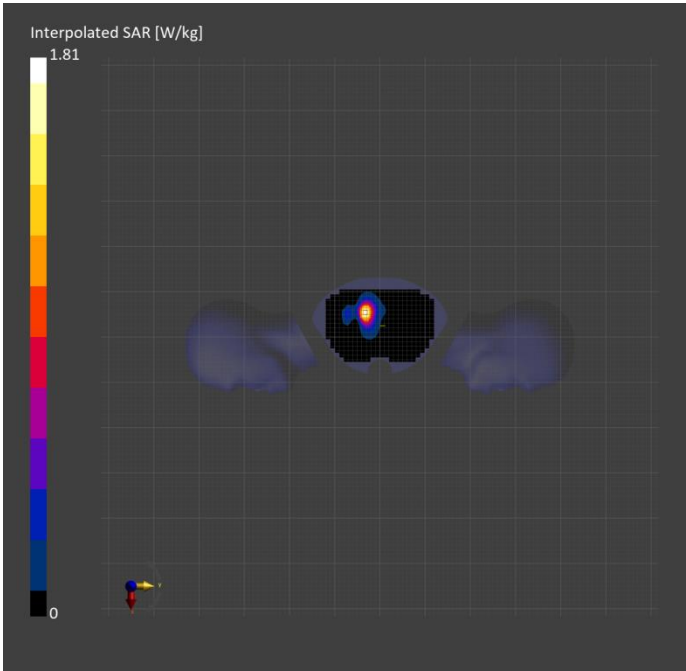
	Area Scan	Zoom Scan
Grid Extents [mm]	160.0 x 240.0	30.0 x 30.0 x 30.0
Grid Steps [mm]	10.0 x 10.0	5.0 x 5.0 x 1.5
Sensor Surface [mm]	3.0	1.4
Graded Grid	N/A	Yes
Grading Ratio	N/A	1.5
MAIA	N/A	N/A
Surface Detection	VMS + 6p	VMS + 6p
Scan Method	Measured	Measured

Measurement Results

	Area Scan	Zoom Scan
Date	2025-06-30, 16:20	2025-06-30, 16:27
psSAR1g [W/kg]	1.44	1.46
psSAR10g [W/kg]	0.739	0.758
Power Drift [dB]	-0.02	-0.07
Power Scaling	Disabled	Disabled
Scaling Factor [dB]		
TSL Correction	No correction	No correction
M2/M1 [%]		82.6
Dist 3dB Peak [mm]		12.0

Warning(s) / Error(s)

Details	Area Scan	Zoom Scan
Warning(s)		
Error(s)		



Device under Test Properties

Model, Manufacturer	Dimensions [mm]	IMEI	DUT Type
Device,	200.0 x 100.0 x 120.0		Mobile Station

Exposure Conditions

Phantom Section, TSL	Position, Test Distance [mm]	Band	Group, UID	Frequency [MHz], Channel Number	Conversion Factor	TSL Conductivity [S/m]	TSL Permittivity
Flat, Head Simulating Liquid	EDGE LEFT, 0.00	Band 25	LTE-FDD, 10169-CAF	1905.000, 26590	8.4	1.40	39.7

Hardware Setup

Phantom	TSL, Measured Date	Probe, Calibration Date	DAE, Calibration Date
Twin-SAM V8.0 (30deg probe tilt) - 2100	HBBL-600-10000 Charge:xxxx, 2025-06-30	EX3DV4 - SN7383, 2025-03-14	DAE4 Sn1318, 2024-10-09

Scan Setup

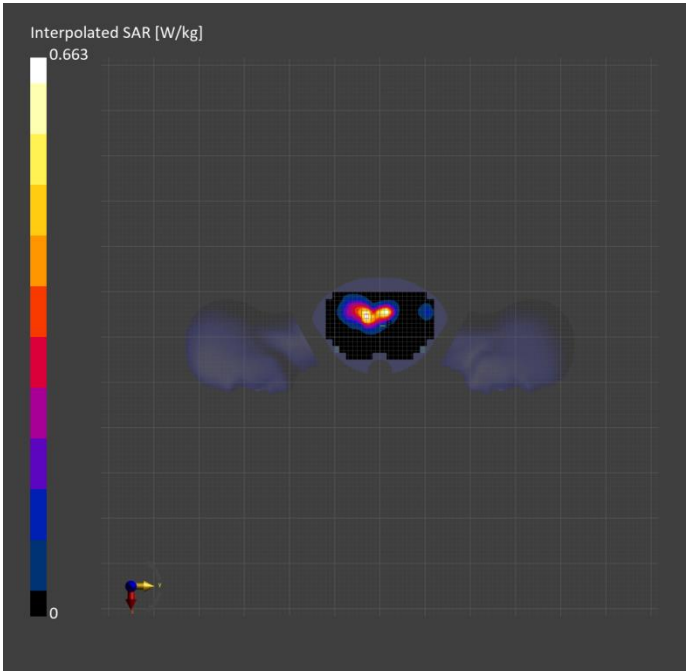
	Area Scan	Zoom Scan
Grid Extents [mm]	150.0 x 240.0	30.0 x 30.0 x 30.0
Grid Steps [mm]	15.0 x 15.0	6.0 x 6.0 x 1.5
Sensor Surface [mm]	3.0	1.4
Graded Grid	N/A	Yes
Grading Ratio	N/A	1.5
MAIA	N/A	N/A
Surface Detection	VMS + 6p	VMS + 6p
Scan Method	Measured	Measured

Measurement Results

	Area Scan	Zoom Scan
Date	2025-06-30, 16:37	2025-06-30, 16:44
psSAR1g [W/kg]	0.547	0.582
psSAR10g [W/kg]	0.309	0.329
Power Drift [dB]	-0.14	0.08
Power Scaling	Disabled	Disabled
Scaling Factor [dB]		
TSL Correction	No correction	No correction
M2/M1 [%]		82.3
Dist 3dB Peak [mm]		13.5

Warning(s) / Error(s)

Details	Area Scan	Zoom Scan
Warning(s)		
Error(s)		



Device under Test Properties

Model, Manufacturer	Dimensions [mm]	IMEI	DUT Type
Device,	200.0 x 100.0 x 120.0		Mobile Station

Exposure Conditions

Phantom Section, TSL	Position, Test Distance [mm]	Band	Group, UID	Frequency [MHz], Channel Number	Conversion Factor	TSL Conductivity [S/m]	TSL Permittivity
Flat, Head Simulating Liquid	BACK, 0.00	Band 26	LTE-FDD, 10181-CAF	841.500, 26965	9.97	0.904	42.1

Hardware Setup

Phantom	TSL, Measured Date	Probe, Calibration Date	DAE, Calibration Date
Twin-SAM V8.0 (30deg probe tilt) - 2100	HBBL-600-10000 Charge:xxxx, 2025-06-30	EX3DV4 - SN7383, 2025-03-14	DAE4 Sn1318, 2024-10-09

Scan Setup

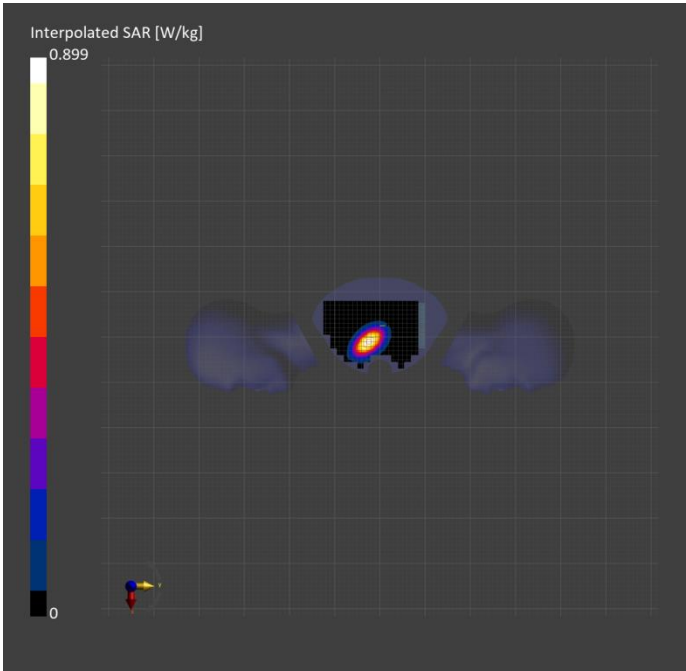
	Area Scan	Zoom Scan
Grid Extents [mm]	150.0 x 200.0	30.0 x 30.0 x 30.0
Grid Steps [mm]	15.0 x 15.0	6.0 x 6.0 x 1.5
Sensor Surface [mm]	3.0	1.4
Graded Grid	N/A	Yes
Grading Ratio	N/A	1.5
MAIA	N/A	N/A
Surface Detection	VMS + 6p	VMS + 6p
Scan Method	Measured	Measured

Measurement Results

	Area Scan	Zoom Scan
Date	2025-06-30, 14:31	2025-06-30, 14:38
psSAR1g [W/kg]	0.780	0.788
psSAR10g [W/kg]	0.514	0.515
Power Drift [dB]	0.08	0.10
Power Scaling	Disabled	Disabled
Scaling Factor [dB]		
TSL Correction	No correction	No correction
M2/M1 [%]		85.5
Dist 3dB Peak [mm]		15.4

Warning(s) / Error(s)

Details	Area Scan	Zoom Scan
Warning(s)		
Error(s)		



Device under Test Properties

Model, Manufacturer	Dimensions [mm]	IMEI	DUT Type
Device,	200.0 x 100.0 x 120.0		Mobile Station

Exposure Conditions

Phantom Section, TSL	Position, Test Distance [mm]	Band	Group, UID	Frequency [MHz], Channel Number	Conversion Factor	TSL Conductivity [S/m]	TSL Permittivity
Flat, Head Simulating Liquid	EDGE LEFT, 0.00	Band 38	LTE-TDD, 10172-CAH	2595.000, 38000	7.69	1.92	39.8

Hardware Setup

Phantom	TSL, Measured Date	Probe, Calibration Date	DAE, Calibration Date
Twin-SAM V8.0 (30deg probe tilt) - 2100	HBBL-600-10000 Charge:xxxx, 2025-06-30	EX3DV4 - SN7383, 2025-03-14	DAE4 Sn1318, 2024-10-09

Scan Setup

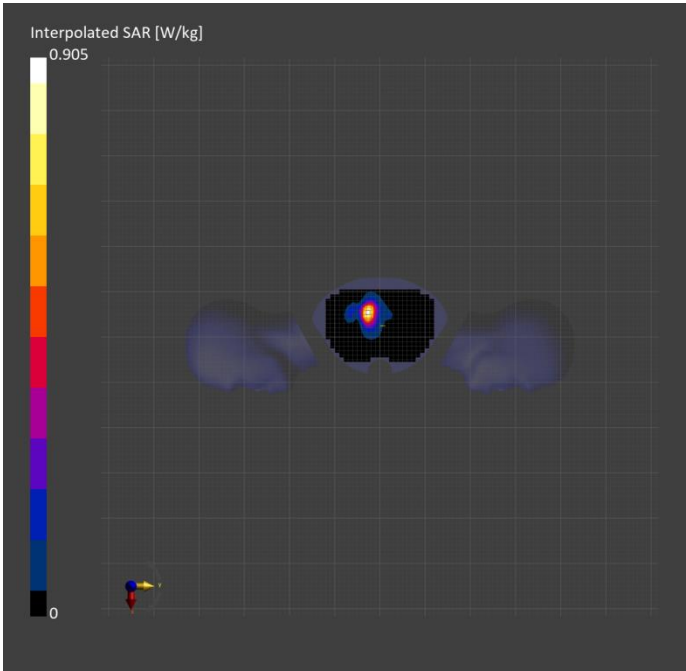
	Area Scan	Zoom Scan
Grid Extents [mm]	160.0 x 240.0	30.0 x 30.0 x 30.0
Grid Steps [mm]	10.0 x 10.0	5.0 x 5.0 x 1.5
Sensor Surface [mm]	3.0	1.4
Graded Grid	N/A	Yes
Grading Ratio	N/A	1.5
MAIA	N/A	N/A
Surface Detection	VMS + 6p	VMS + 6p
Scan Method	Measured	Measured

Measurement Results

	Area Scan	Zoom Scan
Date	2025-06-30, 10:43	2025-06-30, 10:50
psSAR1g [W/kg]	0.715	0.738
psSAR10g [W/kg]	0.366	0.380
Power Drift [dB]	-0.03	0.02
Power Scaling	Disabled	Disabled
Scaling Factor [dB]		
TSL Correction	No correction	No correction
M2/M1 [%]		82.3
Dist 3dB Peak [mm]		12.4

Warning(s) / Error(s)

Details	Area Scan	Zoom Scan
Warning(s)		
Error(s)		



Device under Test Properties

Model, Manufacturer	Dimensions [mm]	IMEI	DUT Type
Device,	200.0 x 100.0 x 120.0		Mobile Station

Exposure Conditions

Phantom Section, TSL	Position, Test Distance [mm]	Band	Group, UID	Frequency [MHz], Channel Number	Conversion Factor	TSL Conductivity [S/m]	TSL Permittivity
Flat, Head Simulating Liquid	FRONT, 0.00	Band 41	LTE-TDD, 10172-CAH	2680.000, 41490	7.69	2.03	38.9

Hardware Setup

Phantom	TSL, Measured Date	Probe, Calibration Date	DAE, Calibration Date
Twin-SAM V8.0 (30deg probe tilt) - 2100	HBBL-600-10000 Charge:xxxx, 2025-06-29	EX3DV4 - SN7383, 2025-03-14	DAE4 Sn1318, 2024-10-09

Scan Setup

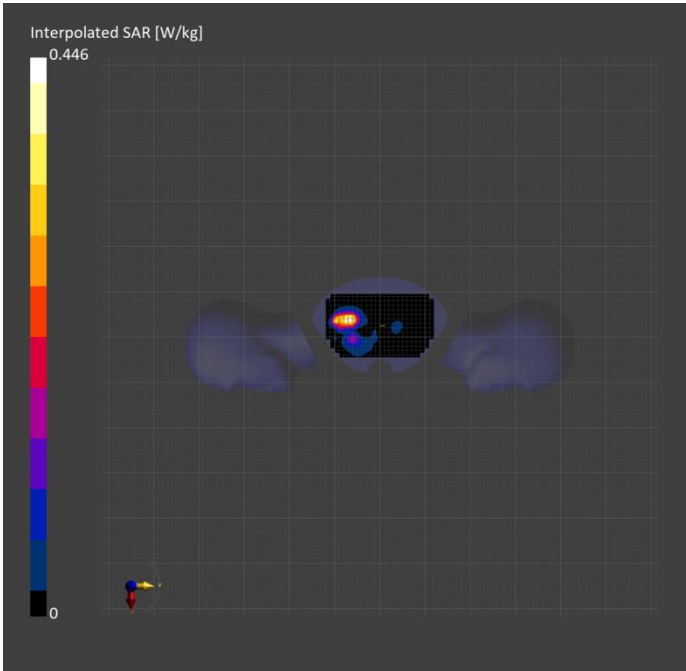
	Area Scan	Zoom Scan
Grid Extents [mm]	140.0 x 240.0	30.0 x 30.0 x 30.0
Grid Steps [mm]	10.0 x 10.0	5.0 x 5.0 x 1.5
Sensor Surface [mm]	3.0	1.4
Graded Grid	N/A	Yes
Grading Ratio	N/A	1.5
MAIA	Y	N/A
Surface Detection	VMS + 6p	VMS + 6p
Scan Method	Measured	Measured

Measurement Results

	Area Scan	Zoom Scan
Date	2025-06-30, 10:01	2025-06-30, 10:09
psSAR1g [W/kg]	0.357	0.370
psSAR10g [W/kg]	0.182	0.189
Power Drift [dB]	0.18	-0.03
Power Scaling	Disabled	Disabled
Scaling Factor [dB]		
TSL Correction	No correction	No correction
M2/M1 [%]		82.7
Dist 3dB Peak [mm]		12.7

Warning(s) / Error(s)

Details	Area Scan	Zoom Scan
Warning(s)		
Error(s)		



Device under Test Properties

Model, Manufacturer	Dimensions [mm]	IMEI	DUT Type
Device,	200.0 x 100.0 x 120.0		Mobile Station

Exposure Conditions

Phantom Section, TSL	Position, Test Distance [mm]	Band	Group, UID	Frequency [MHz], Channel Number	Conversion Factor	TSL Conductivity [S/m]	TSL Permittivity
Flat, Head Simulating Liquid	EDGE LEFT, 0.00	WLAN 2.4GHz	WLAN, 10415-AAA	2462.000, 11	7.84	1.82	39.9

Hardware Setup

Phantom	TSL, Measured Date	Probe, Calibration Date	DAE, Calibration Date
Twin-SAM V8.0 (30deg probe tilt) - 2100	HBBL-600-10000 Charge:xxxx, 2025-07-12	EX3DV4 - SN7383, 2025-03-14	DAE4 Sn1318, 2024-10-09

Scan Setup

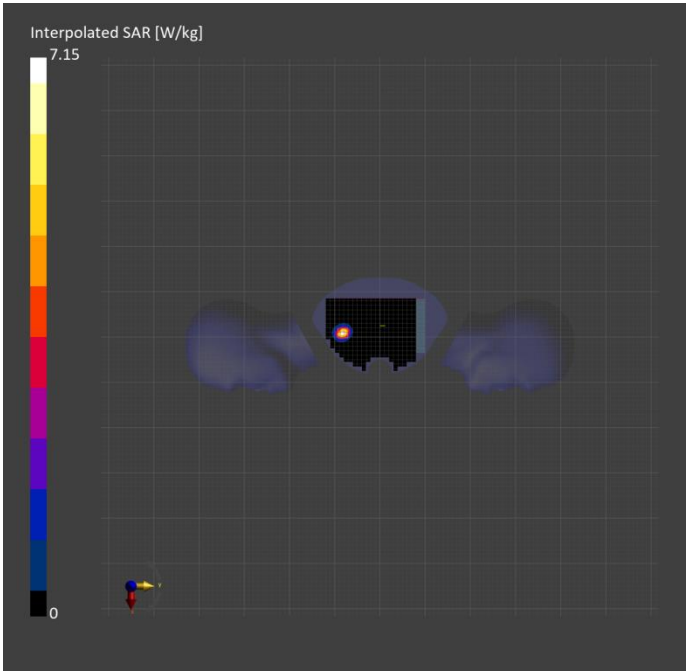
	Area Scan	Zoom Scan
Grid Extents [mm]	150.0 x 200.0	30.0 x 30.0 x 30.0
Grid Steps [mm]	10.0 x 10.0	5.0 x 5.0 x 1.5
Sensor Surface [mm]	3.0	1.4
Graded Grid	N/A	Yes
Grading Ratio	N/A	1.5
MAIA	N/A	N/A
Surface Detection	VMS + 6p	VMS + 6p
Scan Method	Measured	Measured

Measurement Results

	Area Scan	Zoom Scan
Date	2025-07-12, 14:18	2025-07-12, 14:25
psSAR1g [W/kg]	2.55	2.59
psSAR10g [W/kg]	1.58	1.49
Power Drift [dB]	-0.05	-0.04
Power Scaling	Disabled	Disabled
Scaling Factor [dB]		
TSL Correction	No correction	No correction
M2/M1 [%]		81.3
Dist 3dB Peak [mm]		9.3

Warning(s) / Error(s)

Details	Area Scan	Zoom Scan
Warning(s)		
Error(s)		



Device under Test Properties

Model, Manufacturer	Dimensions [mm]	IMEI	DUT Type
Device,	200.0 x 100.0 x 120.0		Mobile Station

Exposure Conditions

Phantom Section, TSL	Position, Test Distance [mm]	Band	Group, UID	Frequency [MHz], Channel Number	Conversion Factor	TSL Conductivity [S/m]	TSL Permittivity
Flat, Head Simulating Liquid	EDGE LEFT, 0.00	WLAN 2.4GHz	WLAN, 10416-AAA	2462.000, 11	7.84	1.82	39.9

Hardware Setup

Phantom	TSL, Measured Date	Probe, Calibration Date	DAE, Calibration Date
Twin-SAM V8.0 (30deg probe tilt) - 2100	HBBL-600-10000 Charge:xxxx, 2025-07-12	EX3DV4 - SN7383, 2025-03-14	DAE4 Sn1318, 2024-10-09

Scan Setup

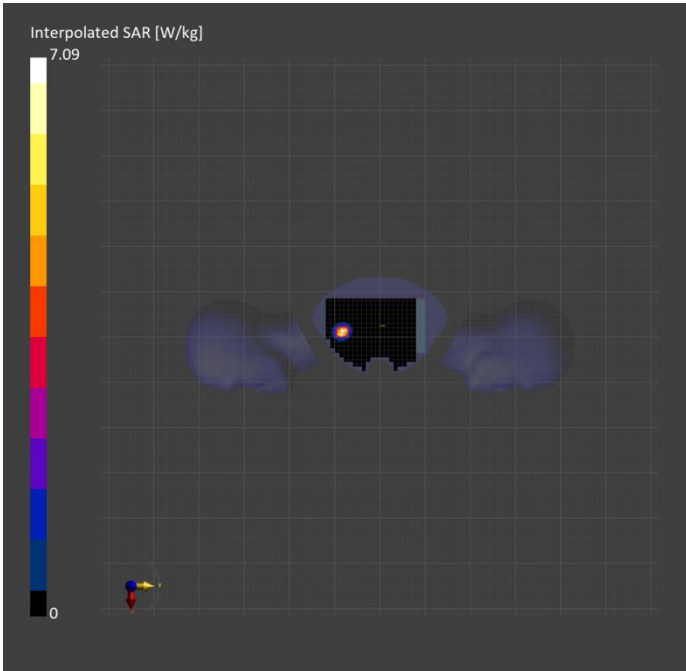
	Area Scan	Zoom Scan
Grid Extents [mm]	150.0 x 200.0	30.0 x 30.0 x 30.0
Grid Steps [mm]	10.0 x 10.0	5.0 x 5.0 x 1.5
Sensor Surface [mm]	3.0	1.4
Graded Grid	N/A	Yes
Grading Ratio	N/A	1.5
MAIA	N/A	N/A
Surface Detection	VMS + 6p	VMS + 6p
Scan Method	Measured	Measured

Measurement Results

	Area Scan	Zoom Scan
Date	2025-07-12, 14:59	2025-07-12, 15:06
psSAR1g [W/kg]	2.50	2.52
psSAR10g [W/kg]	1.52	1.47
Power Drift [dB]	-0.08	0.00
Power Scaling	Disabled	Disabled
Scaling Factor [dB]		
TSL Correction	No correction	No correction
M2/M1 [%]		81.5
Dist 3dB Peak [mm]		9.0

Warning(s) / Error(s)

Details	Area Scan	Zoom Scan
Warning(s)		
Error(s)		



Device under Test Properties

Model, Manufacturer	Dimensions [mm]	IMEI	DUT Type
Device,	200.0 x 100.0 x 120.0		Mobile Station

Exposure Conditions

Phantom Section, TSL	Position, Test Distance [mm]	Band	Group, UID	Frequency [MHz], Channel Number	Conversion Factor	TSL Conductivity [S/m]	TSL Permittivity
Flat, Head Simulating Liquid	EDGE LEFT, 0.00	WLAN 5GHz	WLAN, 10062-CAE	5745.000, 149	4.97	5.20	35.0

Hardware Setup

Phantom	TSL, Measured Date	Probe, Calibration Date	DAE, Calibration Date
Twin-SAM V8.0 (30deg probe tilt) - 2100	HBBL-600-10000 Charge:xxxx, 2025-07-12	EX3DV4 - SN7383, 2025-03-14	DAE4 Sn1318, 2024-10-09

Scan Setup

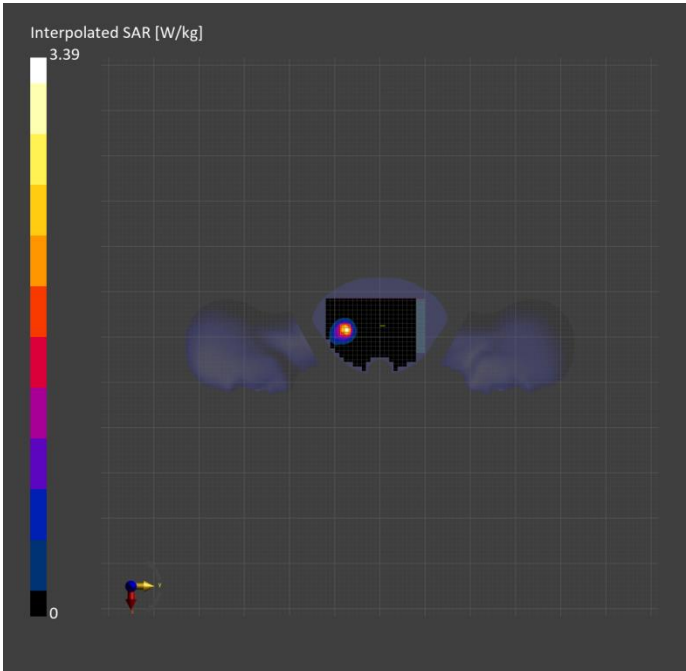
	Area Scan	Zoom Scan
Grid Extents [mm]	150.0 x 200.0	22.0 x 22.0 x 22.0
Grid Steps [mm]	10.0 x 10.0	4.0 x 4.0 x 1.4
Sensor Surface [mm]	3.0	1.4
Graded Grid	N/A	Yes
Grading Ratio	N/A	1.4
MAIA	N/A	N/A
Surface Detection	VMS + 6p	VMS + 6p
Scan Method	Measured	Measured

Measurement Results

	Area Scan	Zoom Scan
Date	2025-07-12, 15:39	2025-07-12, 15:51
psSAR1g [W/kg]	2.38	2.57
psSAR10g [W/kg]	0.873	0.883
Power Drift [dB]	-0.00	0.05
Power Scaling	Disabled	Disabled
Scaling Factor [dB]		
TSL Correction	No correction	No correction
M2/M1 [%]		63.2
Dist 3dB Peak [mm]		8.3

Warning(s) / Error(s)

Details	Area Scan	Zoom Scan
Warning(s)		
Error(s)		



Device under Test Properties

Model, Manufacturer	Dimensions [mm]	IMEI	DUT Type
Device,	200.0 x 100.0 x 120.0		Mobile Station

Exposure Conditions

Phantom Section, TSL	Position, Test Distance [mm]	Band	Group, UID	Frequency [MHz], Channel Number	Conversion Factor	TSL Conductivity [S/m]	TSL Permittivity
Flat, Head Simulating Liquid	FRONT, 0.00	WLAN 2.4GHz	WLAN, 10315-AAB	2412.000, 1	7.84	1.78	39.9

Hardware Setup

Phantom	TSL, Measured Date	Probe, Calibration Date	DAE, Calibration Date
Twin-SAM V8.0 (30deg probe tilt) - 2100	HBBL-600-10000 Charge:xxxx, 2025-07-12	EX3DV4 - SN7383, 2025-03-14	DAE4 Sn1318, 2024-10-09

Scan Setup

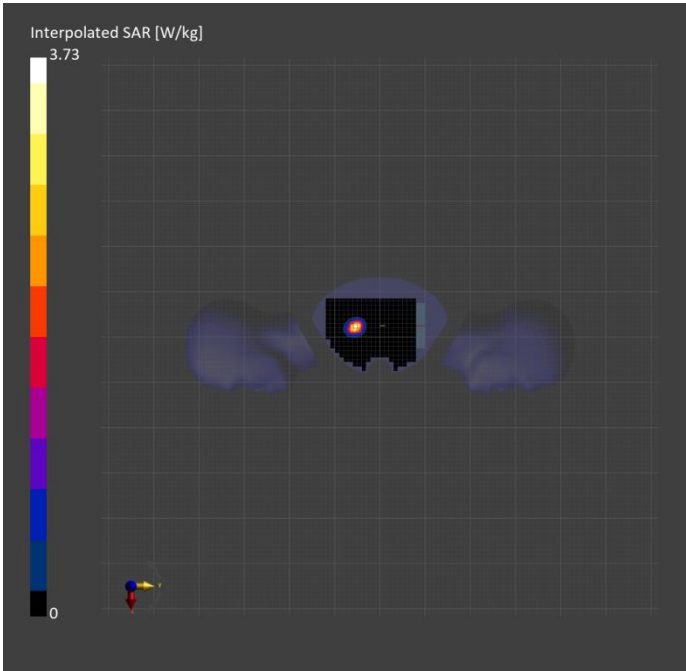
	Area Scan	Zoom Scan
Grid Extents [mm]	150.0 x 200.0	30.0 x 30.0 x 30.0
Grid Steps [mm]	10.0 x 10.0	5.0 x 5.0 x 1.5
Sensor Surface [mm]	3.0	1.4
Graded Grid	N/A	Yes
Grading Ratio	N/A	1.5
MAIA	N/A	N/A
Surface Detection	VMS + 6p	VMS + 6p
Scan Method	Measured	Measured

Measurement Results

	Area Scan	Zoom Scan
Date	2025-07-12, 12:51	2025-07-12, 12:59
psSAR1g [W/kg]	2.87	2.94
psSAR10g [W/kg]	1.01	1.03
Power Drift [dB]	0.08	0.01
Power Scaling	Disabled	Disabled
Scaling Factor [dB]		
TSL Correction	No correction	No correction
M2/M1 [%]		80.0
Dist 3dB Peak [mm]		9.5

Warning(s) / Error(s)

Details	Area Scan	Zoom Scan
Warning(s)		
Error(s)		



Device under Test Properties

Model, Manufacturer	Dimensions [mm]	IMEI	DUT Type
Device,	200.0 x 100.0 x 120.0		Mobile Station

Exposure Conditions

Phantom Section, TSL	Position, Test Distance [mm]	Band	Group, UID	Frequency [MHz], Channel Number	Conversion Factor	TSL Conductivity [S/m]	TSL Permittivity
Flat, Head Simulating Liquid	EDGE RIGHT, 0.00	WLAN 2.4GHz	WLAN, 10315-AAB	2437.000, 6	7.84	1.81	39.9

Hardware Setup

Phantom	TSL, Measured Date	Probe, Calibration Date	DAE, Calibration Date
Twin-SAM V8.0 (30deg probe tilt) - 2100	HBBL-600-10000 Charge:xxxx, 2025-07-12	EX3DV4 - SN7383, 2025-03-14	DAE4 Sn1318, 2024-10-09

Scan Setup

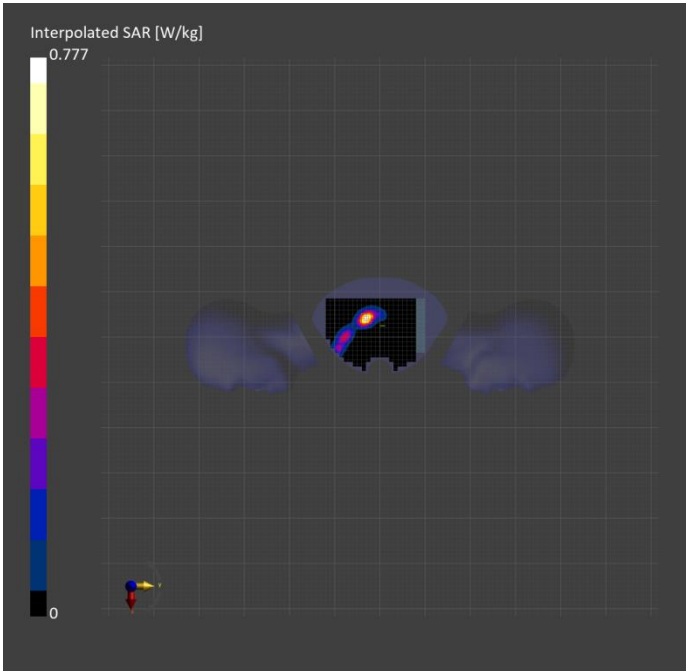
	Area Scan	Zoom Scan
Grid Extents [mm]	150.0 x 200.0	30.0 x 30.0 x 30.0
Grid Steps [mm]	10.0 x 10.0	5.0 x 5.0 x 1.5
Sensor Surface [mm]	3.0	1.4
Graded Grid	N/A	Yes
Grading Ratio	N/A	1.5
MAIA	N/A	N/A
Surface Detection	VMS + 6p	VMS + 6p
Scan Method	Measured	Measured

Measurement Results

	Area Scan	Zoom Scan
Date	2025-07-12, 13:26	2025-07-12, 13:34
psSAR1g [W/kg]	0.614	0.650
psSAR10g [W/kg]	0.304	0.316
Power Drift [dB]	-0.03	0.01
Power Scaling	Disabled	Disabled
Scaling Factor [dB]		
TSL Correction	No correction	No correction
M2/M1 [%]		82.4
Dist 3dB Peak [mm]		10.3

Warning(s) / Error(s)

Details	Area Scan	Zoom Scan
Warning(s)		
Error(s)		



Device under Test Properties

Model, Manufacturer	Dimensions [mm]	IMEI	DUT Type
Device,	200.0 x 100.0 x 120.0		Mobile Station

Exposure Conditions

Phantom Section, TSL	Position, Test Distance [mm]	Band	Group, UID	Frequency [MHz], Channel Number	Conversion Factor	TSL Conductivity [S/m]	TSL Permittivity
Flat, Head Simulating Liquid	FRONT, 0.00	WLAN 5GHz	WLAN, 10591-AAD	5745.000, 149	4.97	5.20	35.0

Hardware Setup

Phantom	TSL, Measured Date	Probe, Calibration Date	DAE, Calibration Date
Twin-SAM V8.0 (30deg probe tilt) - 2100	HBBL-600-10000 Charge:xxxx, 2025-07-12	EX3DV4 - SN7383, 2025-03-14	DAE4 Sn1318, 2024-10-09

Scan Setup

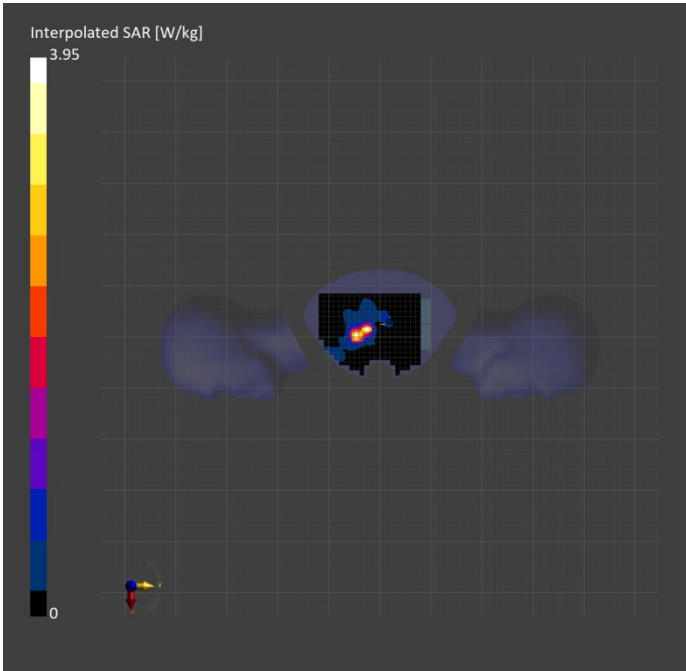
	Area Scan	Zoom Scan
Grid Extents [mm]	150.0 x 200.0	22.0 x 22.0 x 22.0
Grid Steps [mm]	10.0 x 10.0	4.0 x 4.0 x 1.4
Sensor Surface [mm]	3.0	1.4
Graded Grid	N/A	Yes
Grading Ratio	N/A	1.4
MAIA	N/A	N/A
Surface Detection	VMS + 6p	VMS + 6p
Scan Method	Measured	Measured

Measurement Results

	Area Scan	Zoom Scan
Date	2025-07-12, 11:55	2025-07-12, 12:02
psSAR1g [W/kg]	1.84	1.81
psSAR10g [W/kg]	0.87	0.83
Power Drift [dB]	0.01	-0.04
Power Scaling	Disabled	Disabled
Scaling Factor [dB]		
TSL Correction	No correction	No correction
M2/M1 [%]		62.7
Dist 3dB Peak [mm]		8.4

Warning(s) / Error(s)

Details	Area Scan	Zoom Scan
Warning(s)		
Error(s)		



Device under Test Properties

Model, Manufacturer	Dimensions [mm]	IMEI	DUT Type
Device,	200.0 x 100.0 x 120.0		Mobile Station

Exposure Conditions

Phantom Section, TSL	Position, Test Distance [mm]	Band	Group, UID	Frequency [MHz], Channel Number	Conversion Factor	TSL Conductivity [S/m]	TSL Permittivity
Flat, Head Simulating Liquid	EDGE LEFT, 0.00	ISM 2.4 GHz Band	Bluetooth, 10670-AAA	2480.000, 78	7.84	1.85	39.8

Hardware Setup

Phantom	TSL, Measured Date	Probe, Calibration Date	DAE, Calibration Date
Twin-SAM V8.0 (30deg probe tilt) - 2100	HBBL-600-10000 Charge:xxxx, 2025-07-11	EX3DV4 - SN7383, 2025-03-14	DAE4 Sn1318, 2024-10-09

Scan Setup

	Area Scan	Zoom Scan
Grid Extents [mm]	150.0 x 200.0	30.0 x 30.0 x 30.0
Grid Steps [mm]	10.0 x 10.0	5.0 x 5.0 x 1.5
Sensor Surface [mm]	3.0	1.4
Graded Grid	N/A	Yes
Grading Ratio	N/A	1.2
MAIA	Y	N/A
Surface Detection	VMS + 6p	VMS + 6p
Scan Method	Measured	Measured

Measurement Results

	Area Scan	Zoom Scan
Date	2025-07-11, 21:50	2025-07-11, 22:55
psSAR1g [W/kg]	0.091	0.107
psSAR10g [W/kg]	0.043	0.047
Power Drift [dB]	-0.14	-0.00
Power Scaling	Disabled	Disabled
Scaling Factor [dB]		
TSL Correction	No correction	No correction
M2/M1 [%]		64.3
Dist 3dB Peak [mm]		10.1

Warning(s) / Error(s)

Details	Area Scan	Zoom Scan
Warning(s)		
Error(s)		

