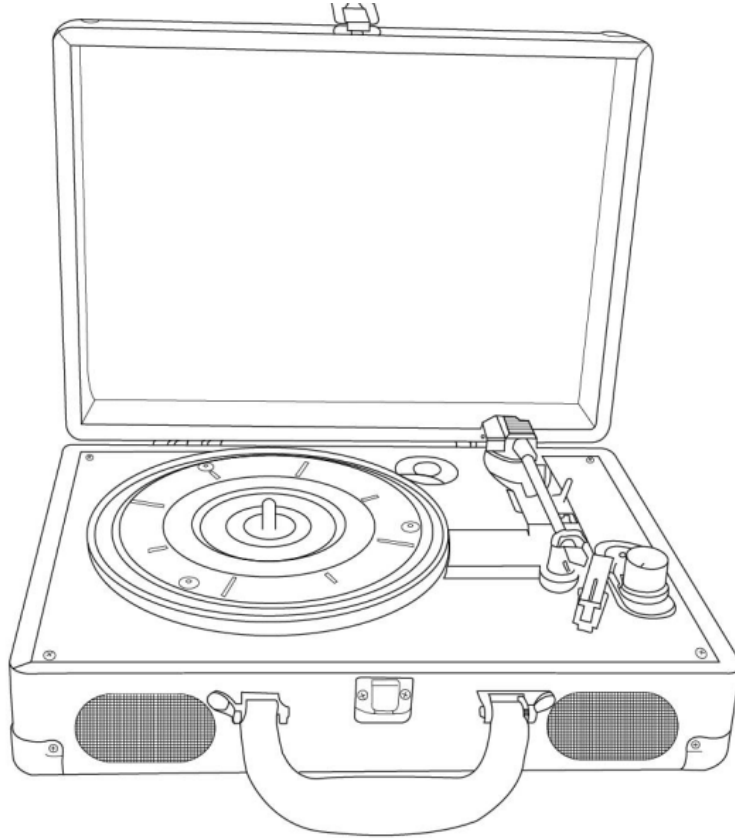


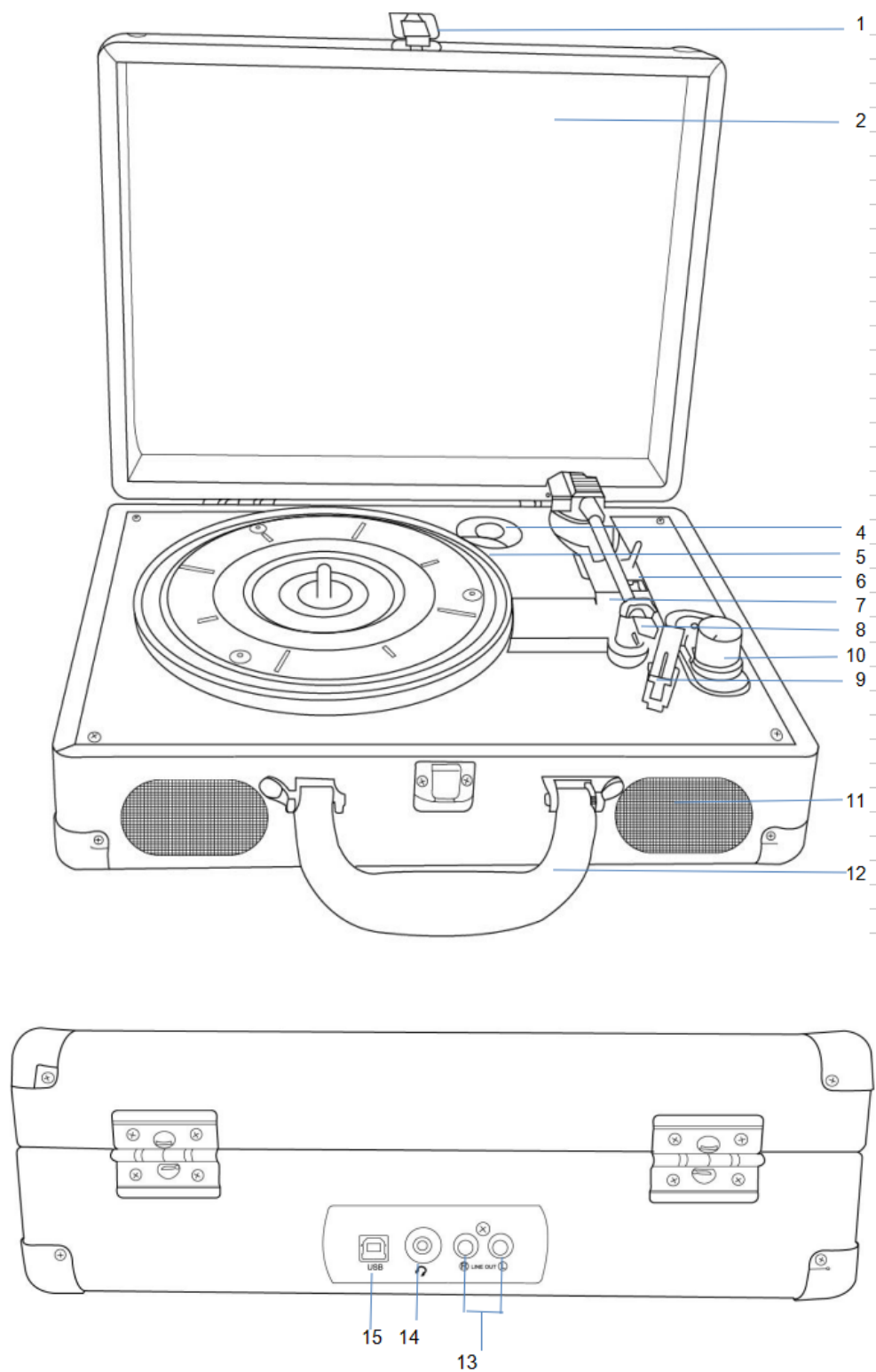
# Suitcase Turntable Player DS-101

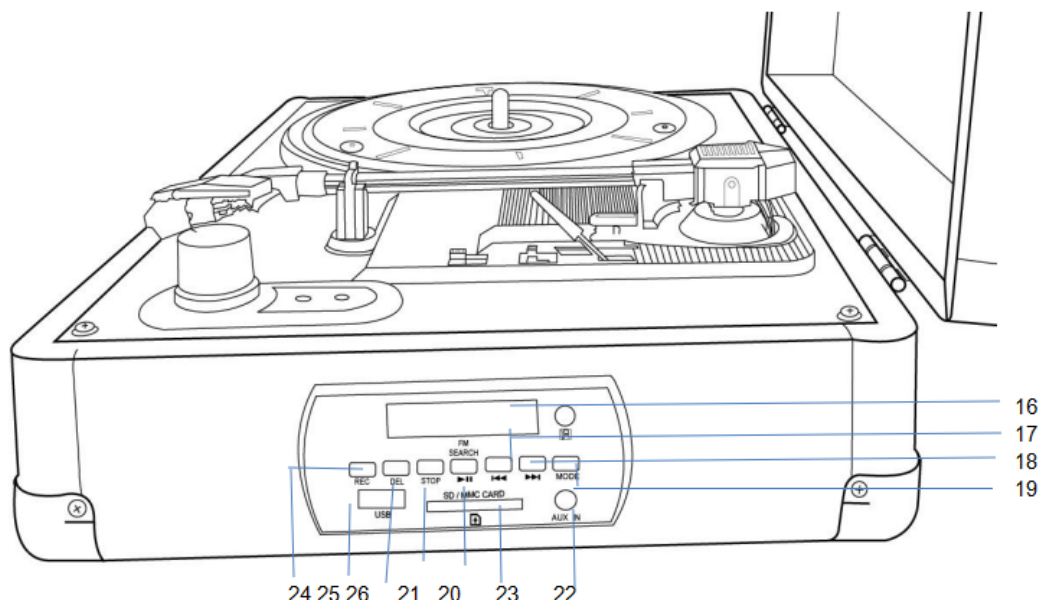


## Features:

1. Function: 33.3,45,45rpm Turntable LP player
2. Built-in Speaker (2x1W RMS)
3. Line Out ( RCA Jack )
4. USB/SD playing and recording
5. FM radio
6. Aux in and Headphone
7. RCA out
8. Built-in rechargeable battery
9. Recharge battery

# **DESCRIPTION**





- |  |                             |
|--|-----------------------------|
| 1. Lock catch  | 2. Plastic dust cover       |
| 3. Adapter - Use this when playing 45rpm records with cut out centres. |                             |
| 4. Tonearm lift lever  | 6. Auto stop control        |
| 5. Turntable   |                             |
| 7. Speed selection - Three speed for choice: 33.3, 45, 78 rpm.         |                             |
| 8. Lock ON and OFF   | 11. Built-in stereo speaker |
| 9. Needle  | 12. Handle                  |
| 10. Power switch   | 13. RCA output              |
| 14. USB 5V DC power in socket  |                             |
| 15. Socket for headphone to play iphone/ipod                           |                             |
| 16. LCD blue display   | 18. SKIP DOWN button        |
| 17. SKIP UP button   |                             |
| 19. Mode: to select FM radio/USB/SD or LP songs                        |                             |
| 20. PLAY OR PAUSE  | 22. Aux in                  |
| 21. Stop/Play button   |                             |
| 23. SD card slot: playing SD card songs or recording                   |                             |
| 24. REC: function to record  |                             |
| 25. USB slot: playing USB songs or recording                           |                             |
| 26. Delete button  |                             |

## **INITIAL SET-UP**

## **MAINS CONNECTION**

Ensure that the mains voltage of your home corresponds to the operating voltage of the unit. Your unit is ready to be connected to a mains voltage of 100-240V/50 / 60Hz.

## **AMPLIFIER CONNECTION (if required)**

Whilst you can listen to your new turntable using the built in speakers you may wish to connect it to your existing Hi Fi system. Connect the audio plugs to the AUX input on your mixer or amplifier using an RCA cable (not supplied)

- **Red plug into R/H channel input.**
- **White plug into L/H channel input.**

## **Playing a record**

- Place the record of your choice on the turntable. If required, do not forget to place the adaptor on the record spindle.
- Choose the desired playing speed using the speed selection switch between 33.3, 45 and 78rpm.
- Turn on the Rotary Power Switch, note that this also controls volume.
- Release the tone arm lock.
- Raise the arm with your hand lightly.
- Place the stylus vertically over the first track of the record, the turntable will start turning automatically.
- Put down the stylus slowly on to the record to play.
- When a record comes to the end, the turntable will stop automatically if the auto-stop switch is in the ON position. If the switch is in the off position then

it will keep revolving until the tone arm is returned to the tone arm rest.

- Lift up the tone arm and put it on the rest when finished.
- Replace the protective cap on the stylus and close the tone arm lock.
- Turn off power at mains.

## **Phono encoding**

1. Set the function button to PHONO mode and then insert a memory device (USB drive, SD or MMC card).
2. Put your record onto the turntable and get it ready for playback.
3. Press the record REC button. It will take about 3 - 4 seconds to read the memory device, then the USB or SD icon will be flashing on the LC display.
4. Press the skip up or skip down button to select the desired mode (USB or SD) for encoding, then press the record REC button again to confirm. (You can skip this step if only a USB drive or an SD/MMC card is inserted.)
5. The system will start the encoding mode after a few seconds.
6. Lower the tone arm to start playback of the record. During encoding, the USB or SD icon will be flashing on the display.
7. To finish encoding, press the stop button. The display will show "END" and return to PHONO mode.

## **NOTE:**

- The recording speed is 1:1. Recording will take as long as playing the record.
  - The recording format is preset at MP3 bit rate 128 kbps.

## **AUX IN encoding**

1. Insert AUX in and then insert a memory device (USB drive, SD or MMC card).
2. Press the record REC button, it will take 3 - 4 seconds to read the memory device, then the USB or SD icon will be flashing on the LC display.
3. Press the skip up or skip down button to select the desired mode (USB or SD) for encoding, then press the record REC button again to confirm. (You can skip this step if only a USB drive or an SD/MMC card is inserted.)
4. The system will start the encoding mode after a few seconds. During encoding, the USB or SD icon will be flashing on the display.
5. To finish encoding, press the stop button. The display will show "END" and return to TAPE/AUX mode.

**NOTE:**

- The recording speed is 1:1. Recording will take as long as playing the CD (or other auxiliary input).
- The recording format is preset at MP3 bit rate 128 kbps.

**The USB Port and SD Card Slot**

**Playback of music in MP3/WMA format via USB device or memory card**

The system is able to decode and playback all MP3/WMA files stored in the memory media connected to the USB port or SD/MMC card slot.

1. Turn the volume knob clockwise to turn the equipment on.
  2. Following the illustration below, insert a USB device face up into the USB port, making sure it is fully inserted. Alternatively, insert a memory card in the direction of the arrow (as shown on the label next to the memory card slot), making sure to insert it straight without bending.
- IMPORTANT:** Connecting the USB device

upside down or backwards could damage the audio system or storage media (USB drive, SD or MMC card). Check to ensure the direction is correct before connection.

3. Set the function selector to USB/SD mode. (If you have both a USB device and a memory card inserted, press the MODE button to toggle between USB and SD mode.) The system will start reading the storage medium automatically after mode selection and will display the total number of folders and MP3/WMA files.
4. The system will then start audio playback from the media storage device (USB or SD card) automatically.

### **Playback controls**

**PLAY/PAUSE** Press this button once to stop playing, press it again to continue.

**STOP** Press this button to stop audio playback, the display will then show the total number of MP3/WMA files.

**SKIP UP** Press this button once to play the next file, press and hold this button to fast forward through the files/tracks.

**SKIP DOWN** Press this button once to play the previous file, press and hold this button to fast reverse through the files/tracks.

**TUNING KNOB** Turn this knob to the right/left to search a folder backward or forward.

**MODE** Press this button to toggle between USB and SD Card mode.

### **Important notes**

- The system can detect and read files in MP3 / WMA format only via the USB

port or SD card slot.

- You can connect an MP3 player to the system via the USB socket, however, some MP3 players may not be able to play via the USB socket. This is due to variances in the MP3 encoding format, it is not a malfunction of the system.
- There are numerous USB and SD device producers and their products vary in solution and format. We therefore cannot guarantee that this unit will support all USB and SD devices from every brand.
- This system supports SD cards up to 8GB.
- MP3 / WMA track format requirements:MP3 bit rate: 32 kbps~256 kbps; WMA bit rate: 32 kbps ~ 320 kbps.

### **Copying of MP3 / WMA files**

The system allows you to copy files from USB to SD/MMC or vice versa. You can copy a single file/track, a folder of files/tracks, or all files/tracks on the storage medium.

#### **Copying a single file/track**

1. Insert a USB storage device and SD/MMC card, then select USB/SD mode (as described previously).
2. Press the record REC button during playback of the track you want to copy: "ONE" will be flashing on the display. Press the record REC button again to confirm.
3. The USB or SD icon will be flashing on the display while the system is copying the file.



4. Once the file has been copied, the unit will stop playback automatically. “END” will be shown on the display and the system will revert to USB or SD mode.

### **Copying a folder**

1. Insert a USB storage device and SD card, then select USB/SD mode (as described previously). When the system has recognized the device, press the stop button.
2. Turn the tuning knob to select the desired folder for copying.
3. Press the record REC button: “ONE” will be flashing on the display. Press the **SKIP UP** or **SKIP DOWN** button to select “FOL” (folder) on the display. Press the record REC button again to confirm.
4. The USB or SD icon will be flashing on the display while the system is copying the folder.
5. When the folder has been copied, the USB or SD icon will stop flashing on the display.

### **Copying all files/tracks**

1. Insert a USB storage device and SD card, then select USB/SD mode (as described previously). When the system has recognized the device, press the stop button.
2. Press the record REC button: “ONE” will be flashing on the display. Press the **SKIP UP** or **SKIP DOWN** button to select “ALL” on the display. Press the record REC button again to confirm.
3. The USB or SD icon will be flashing on the display while the system is copying

the files/tracks.

4. When all files/tracks have been copied, the USB or SD icon will stop flashing on the display.

**NOTE:** If you press the record REC button during playback in USB or SD mode, the file will copy from USB to SD or vice versa.

### **Deleting files from the USB device / SD card**

The system is able to erase files stored on the USB drive or SD card. You can delete a single file/track, a folder of files/tracks, or all files/tracks on the storage medium.

#### **Deleting a single file/track**

1. Insert the USB storage device or SD card, then select USB/SD mode (as described previously).
2. Press the delete **DEL** button during the playback of the track you want to delete: "ONE" will be flashing on the display. Press the delete **DEL** button again to confirm.
3. "DEL" will show on the display while the file/track is being deleted until the deletion is complete.

#### **Deleting a folder**

1. Insert a USB storage device and SD card, then select USB/SD mode (as described previously). When the system has recognized the device, press the stop button.
2. Turn the tuning knob to select the desired folder for deleting.

3. Press the delete **DEL** button: “ONE” will be flashing on the display. Press the **SKIP UP** or **SKIP DOWN** button to select “DIR” (directory) on the display. Press the delete **DEL** button again to confirm.
4. “DEL” will show on the display while the folder is being deleted until the deletion is complete.

### **Deleting all files/tracks**

1. Insert a USB storage device and SD card, then select USB/SD mode (as described previously). When the system has recognized the device, press the stop button.
2. Press the delete **DEL** button: “ONE” will be flashing on the display. Press the **SKIP UP** or **SKIP DOWN** button to select “ALL” on the display. Press the delete **DEL** button again to confirm.
3. While the system is deleting the files/tracks, the USB or SD icon will be flashing on the display until the deletion is complete.

**NOTE:** Pressing the delete **DEL** button will completely delete all files/tracks on the USB device or SD card.

### **Removing the USB device / SD card**

- First move the function selector to another mode (tuner, phono, tape), then turn the volume knob counterclockwise to turn off the power.
- To remove a USB device, pull it out of the USB port.
- To remove a memory card, press the memory card inwards and then release it. The card will be released (partially ejected) and you can remove it by hand.

# **MAINTENANCE**

## **REPLACING THE STYLUS**

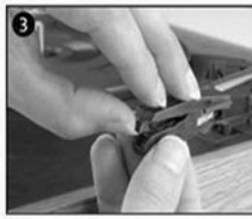
-Refer to the figures 1-8



push the arm lock to release the tone-arm.



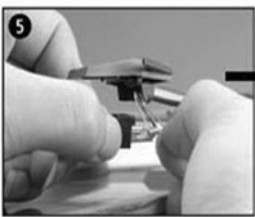
take off cap of the cartridge to expose the needle out.



separate the cartridge from the socket lightly.



take off the audio-line from the cartridges completely.



to fit a new one just in opposite deals. insert the audio-line accordingly, and install the cartridge to the socket lightly.

NOTE: Please exercise extreme care whilst performing this operation so as to avoid the tone arm and audio line wires from any damage.



## **INSTALLING A NEW STYLUS CARTRIDGE**

-Refer to the figures 5 & 6



## **NOTES**

We advise you to clean your records with an anti-static cloth to gain maximum enjoyment from them and to make them last.

We would also point out that for the same reason your stylus should be replaced periodically (approximately every 250 hours)

Dust the stylus from time to time using a very soft brush dipped in alcohol

(brushing from back to front of the cartridge)

#### WHEN TRANSPORTING YOUR RECORD PLAYER DO NOT FORGET TO:

- Replace the protective cap on the stylus.
- Put the rest clip into the pick-up arm.

#### **Warning:**

This device complies with Part 15 of the FCC Rules. Operation is subject to the following two conditions: (1) this device may not cause harmful interference, and (2) this device must accept any interference received, including interference that may cause undesired operation.

Changes or modifications not expressly approved by the party responsible for compliance could void the user's authority to operate the equipment.

NOTE: This equipment has been tested and found to comply with the limits for a Class B digital device, pursuant to Part 15 of the FCC Rules. These limits are designed to provide reasonable protection against harmful interference in a residential installation. This equipment generates, uses and can radiate radio frequency energy and, if not installed and used in accordance with the instructions, may cause harmful interference to radio communications. However, there is no guarantee that interference will not occur in a particular installation.

If this equipment does cause harmful interference to radio or television reception which can be determined by turning the equipment off and on, the user is encouraged to try to correct the interference by one or more of the following measures:

- Reorient or relocate the receiving antenna.
- Increase the separation between the equipment and receiver
- Connect the equipment into an outlet on a circuit different from that to which the receiver is connected.
- Consult the dealer or an experienced radio/TV technician for help

NOTE: This device and its antenna(s) must not be co-located or operation in conjunction with any other antenna or transmitter

#### RF Exposure Statement

To maintain compliance with FCC's RF Exposure guidelines, this equipment should be installed and operated with minimum distance of 20cm the radiator your body. This device and its antenna(s) must not be co-located or operation in conjunction with any other antenna nr transmitter.