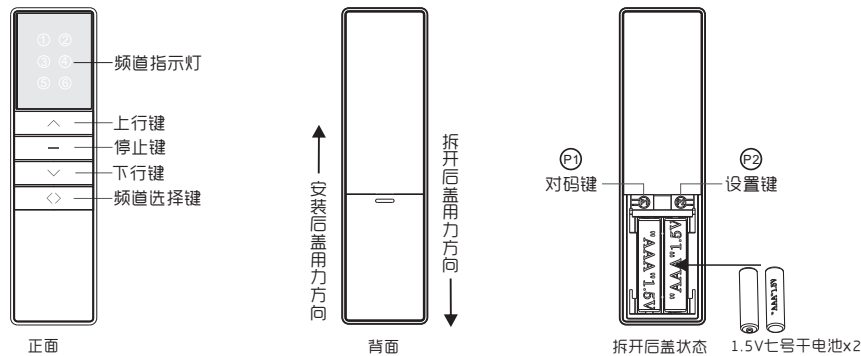


A13-6频锁屏发射器说明书

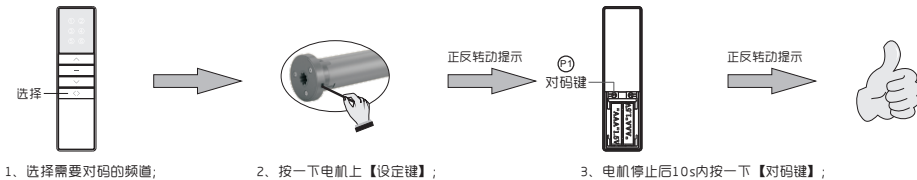
公司保留更改产品设计与说明书的权利。届时将不另行通知。图片仅供参考，具体以实物为准。 A/O H10207

按键功能说明

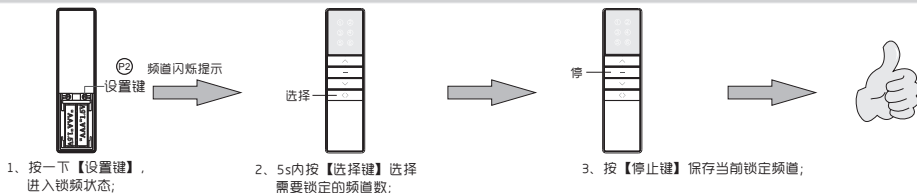


发射器操作说明 (*以K25-3E-1.6-26管状电机为例进行说明，其它请参考相应的说明书。)

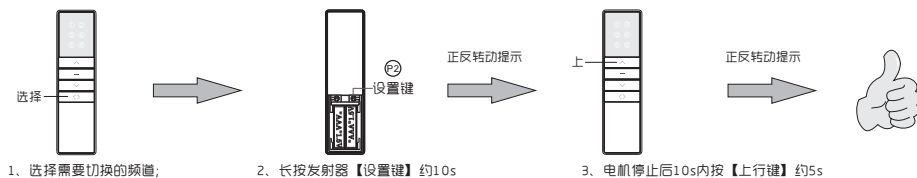
对码：重复操作对码步骤即是消除当前码。一台电机最多储存5个发射通道，再增加新发射通道只会循环覆盖最后一个通道：



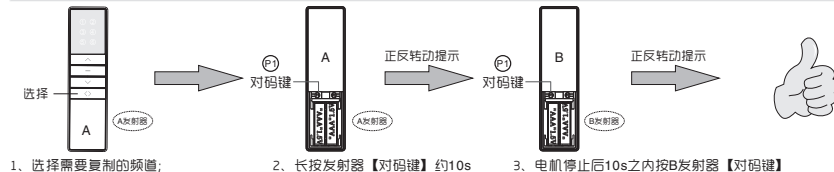
锁频设置：



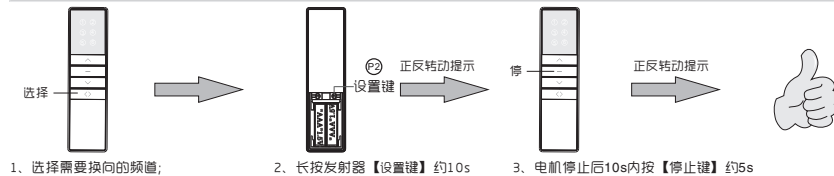
点动/连动模式互换：电机出厂默认为连动模式。切换为点动模式后，长按住【上行键】或【下行键】约2s电机合一直连动运转：



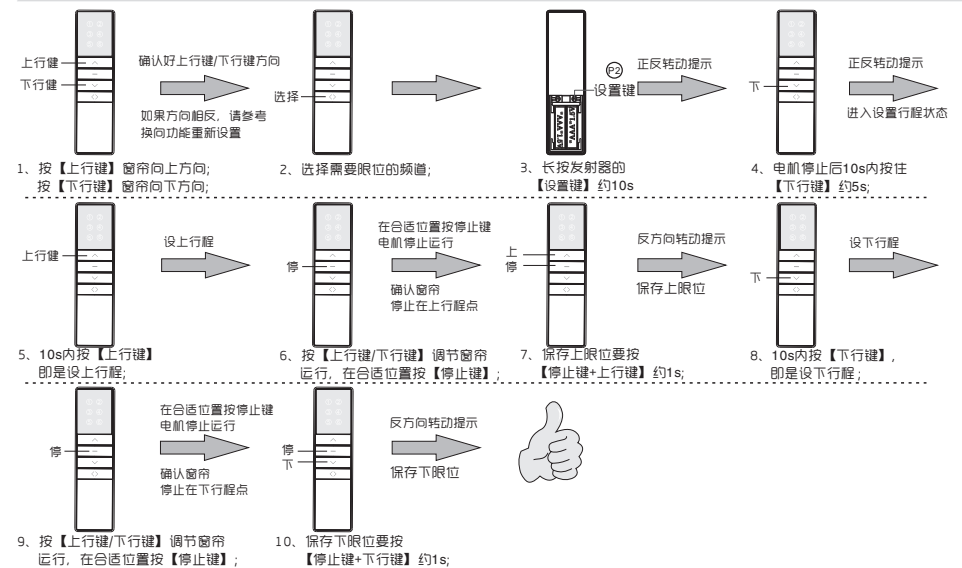
复制：为已经对码的电机新增一个发射器：



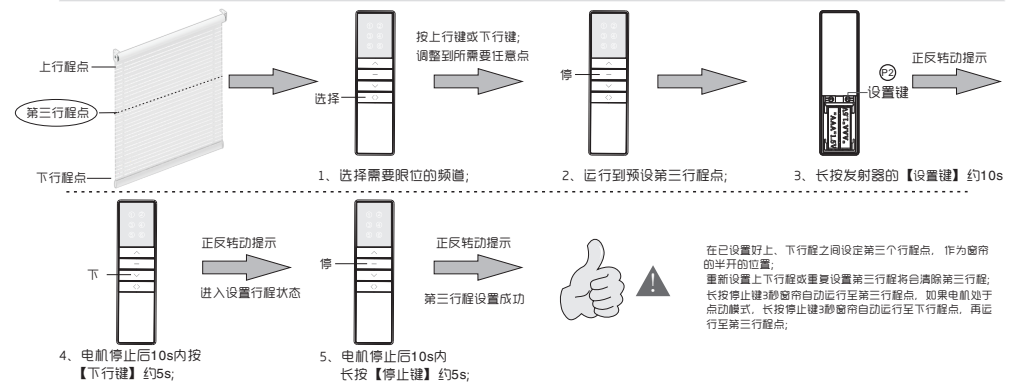
换向：切换已对上码电机运转方向。如：换向前，按发射器上行键，窗帘往下运行；换向后，按发射器上行键，窗帘往上运行：



上行/下行行程设置：指按发射器【上行键或下行键】时，窗帘向上/向下运行所能到达的理想最高/最低位置。



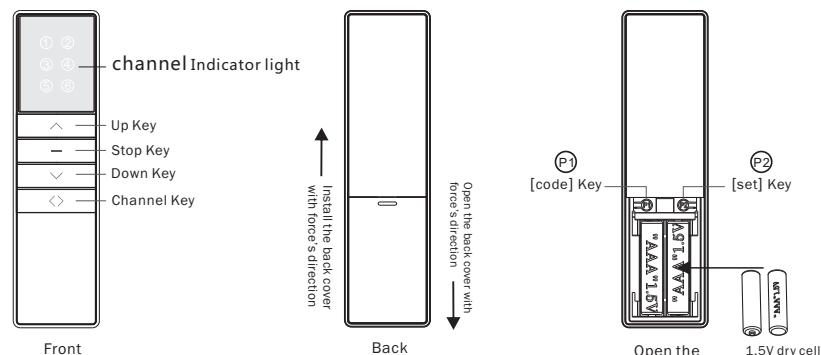
第三行程设置：重复操作设置将会取消第三行程点：



A13-6 channel lock transmitter specification

Company reserves the right to change product design and specifications without prior notice then ,photos are for reference only.
A/O H10207

B Button function specifications

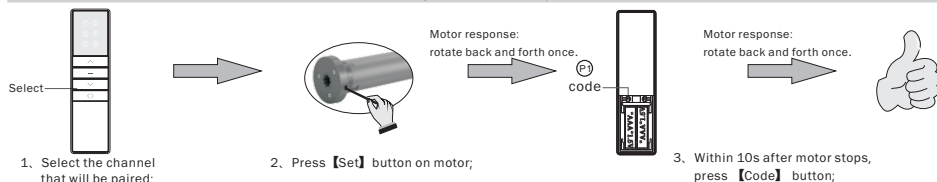


T Transmitter operating instructions

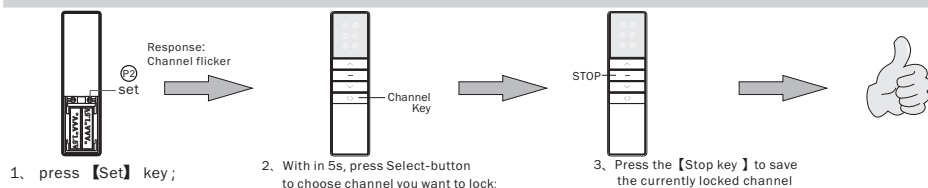
(Take K25-3E-1.6-26Tubular motor as an example. For others, please refer to the corresponding manual)

Pairing transmitter and motor :

Repeat the pairing operation once to eliminate the current pairing. A motor stores up to 5 transmitter channels. Adding a new transmitter channel will cover the earliest channel. For example, current paired channels are 1~5. If you add channel 6, paired channels will be 2~6. :

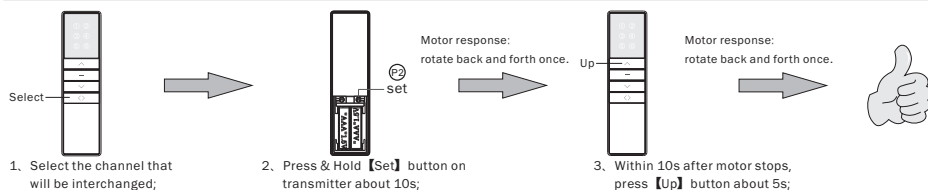


lock channel setting:

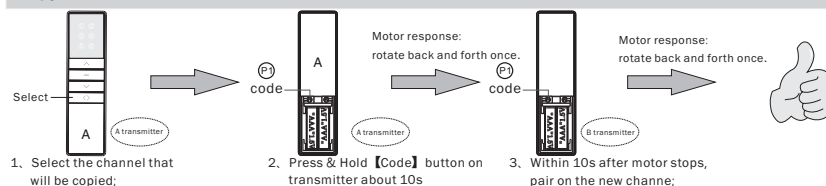


Inching / Continuous moving interchange :

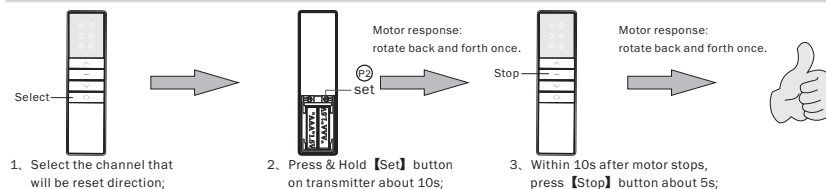
Default is continuous moving. After switching to inching moving, press & hold [Up] or [Down] button about 2s, motor will continuously moves.



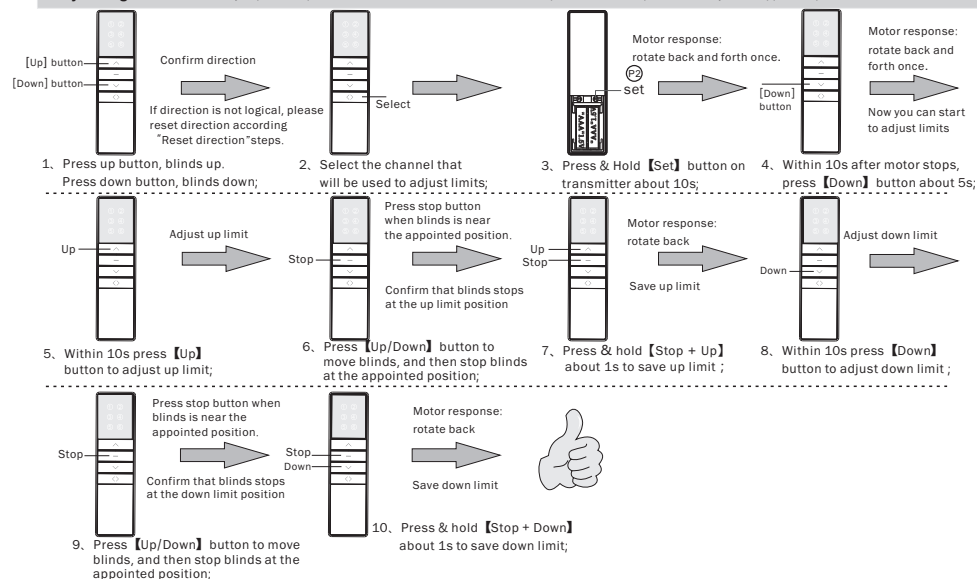
Copy : Add a new channel to control motor. (No need to touch motor):



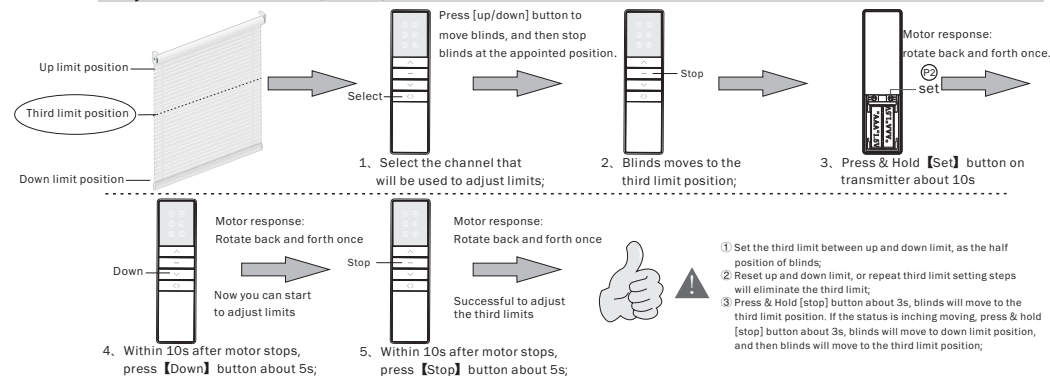
Reset direction : Reset motor direction. Such as: before reset, press transmitter up button, blinds run down. After reset, press transmitter up button, blinds run up.



Adjusting Limits : When you press [Up] or [Down] button, the blinds will move up or down and stop automatically at the appointed position.



Adjust the third limit : Repeat the operation once to eliminate the third limit:



FCC Caution:

This device complies with part 15 of the FCC Rules. Operation is subject to the following two conditions: (1) This device may not cause harmful interference, and (2) this device must accept any interference received, including interference that may cause undesired operation.

Any Changes or modifications not expressly approved by the party responsible for compliance could void the user's authority to operate the equipment.

Note: This equipment has been tested and found to comply with the limits for a Class B digital device, pursuant to part 15 of the FCC Rules. These limits are designed to provide reasonable protection against harmful interference in a residential installation. This equipment generates uses and can radiate radio frequency energy and, if not installed and used in accordance with the instructions, may cause harmful interference to radio communications. However, there is no guarantee that interference will not occur in a particular installation. If this equipment does cause harmful interference to radio or television reception, which can be determined by turning the equipment off and on, the user is encouraged to try to correct the interference by one or more of the following measures:

- Reorient or relocate the receiving antenna.
- Increase the separation between the equipment and receiver.
- Connect the equipment into an outlet on a circuit different from that to which the receiver is connected.
- Consult the dealer or an experienced radio/TV technician for help.

The device has been evaluated to meet general RF exposure requirement. The device can be used in portable exposure condition without restriction.