

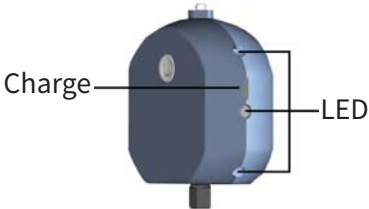
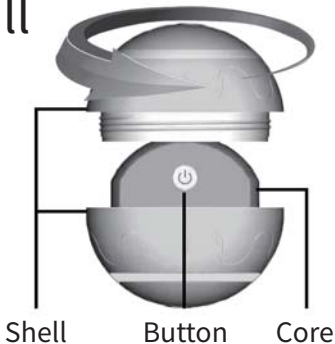
REMOTE AUTO PET TOY BALL



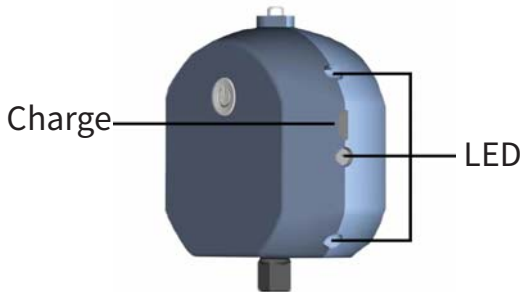
USER MANUAL

1, Open ball

Turn counterclockwise to open the shell of the toy ball.



2, Charge



Description of LED when charging

● RED: Charging

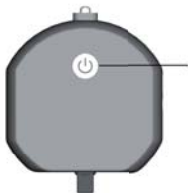
● Green: Fully charged

note: It takes about 2.5 hour to fully charged.

3, Power&Mode

Press the power button 3s to
turn on or off the power

- Green LED flash:Power on
- Blue LED flash:Power off



Power Button

The remote control does not need
to be matched and is ready to use
when you turn on ball .

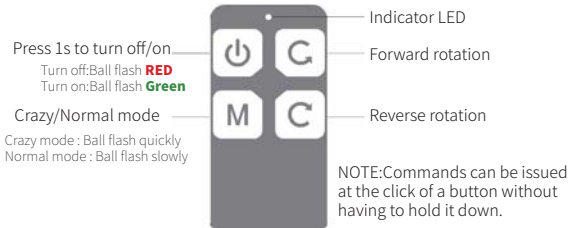


4, Put the core into shell



Turn clockwise to close the toy ball

5, Remote control



WARNING: This device complies with part 15 of the FCC Rules. Operation is subject to the following two conditions:
(1) This device may not cause harmful interference, and
(2) this device must accept any interference received, including interference that may cause undesired operation.

CAUTION: Changes or modifications not expressly approved by the party responsible for compliance could void the user's authority to operate the equipment.

6, Let your pets have fun

This pet toy ball has a built-in motion sensor, when the pet fiddles or bites it, it will automatically start to rotate for 10 seconds, and at the same time turn on the colorful LED light, after 10 seconds, the colorful LED light will continue to flash for 4 seconds. Continue to attract for 4 seconds. Continue to attract pets to come



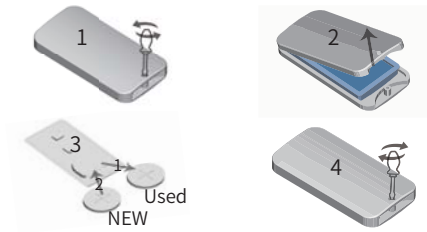
and play with it. After the first start, if not triggered, the toy ball will start again after 120 seconds and 180 seconds, during which it will flash colored lights at intervals to increase attractiveness.

When the toy ball flashes red ● please charge the toy ball in time



You can operate this toy ball through the remote control, when the pet is not actively playing with the toy ball, you can use the forward/reverse button to wake up the toy ball to turn and glow to attract pets

Remote control battery replacement steps



Remote control battery replacement steps:

1. Use a screwdriver to unscrew the screws of the remote control shell.
2. Open the remote control shell.
3. Replace the **CR2032** battery. At this time, pay attention to the polarity of the battery, that is, the positive pole is facing up, and the negative pole is facing the circuit board.
4. Install the casing and tighten the screws.

NOTE: This equipment has been tested and found to comply with the limits for a Class B digital device, pursuant to Part 15 of the FCC Rules. These limits are designed to provide reasonable protection against harmful interference in a residential installation. This equipment generates, uses, and can radiate radio frequency energy and, if not installed and used in accordance with the instructions, may cause harmful interference to radio communications. However, there is no guarantee that interference will not occur in a particular installation. If this equipment does cause harmful interference to radio or television reception, which can be determined by turning the equipment off and on, the user is encouraged to try to correct the interference by one more of the following measures:

- Reorient or relocate the receiving antenna.
- Increase the distance between the equipment and receiver.
- Connect the equipment into an outlet on a circuit different from that to which the receiver is connected.
- Consult the dealer or an experienced radio/TV technician for help.

Specifications

Name: Auto Pet Toy Ball

Material: Silicone+ABS

Diameter: 80mm/3.15inch

Weight: 165g/5.8oz

Battery: Li-ion battery 500mAh

Charge voltage: 5V

Working mode: Crazy/Normal Mode

Waterproof: IP54

Suitable: Dogs, Cats, etc.

Packing list: Toy ball x1

Charging cable x1

User manual x1

Remote control x1



Made In China