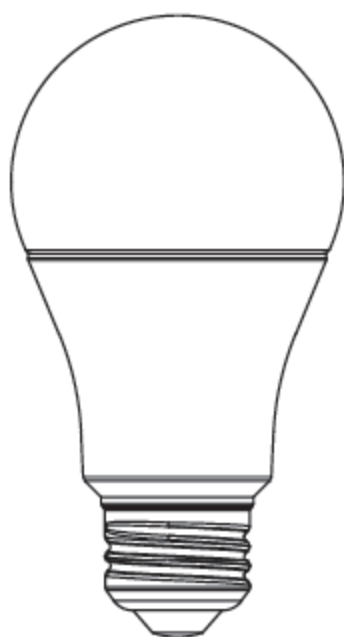




USER MANUAL



Aurevo

Figure 1

Product overview

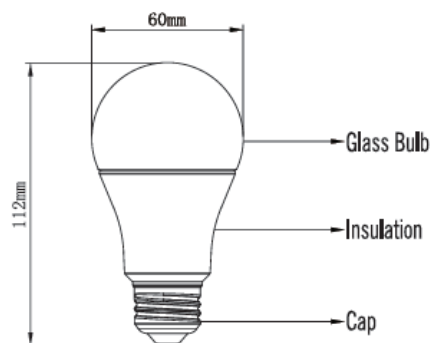


Figure 2

Bulb installation



Figure 3

Download the Olight App



Exclusive Offers | Smart Device Control | Customer Service

Figure 4

Log in to the APP

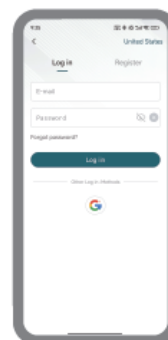


Figure 5

Connect to Wi-Fi, enable the wireless connection feature on your phone, and add a device.

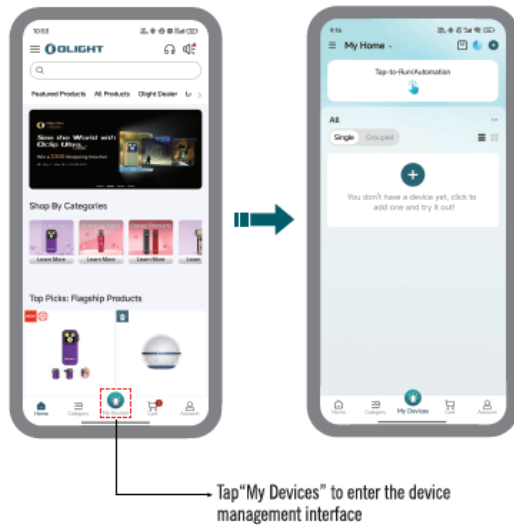
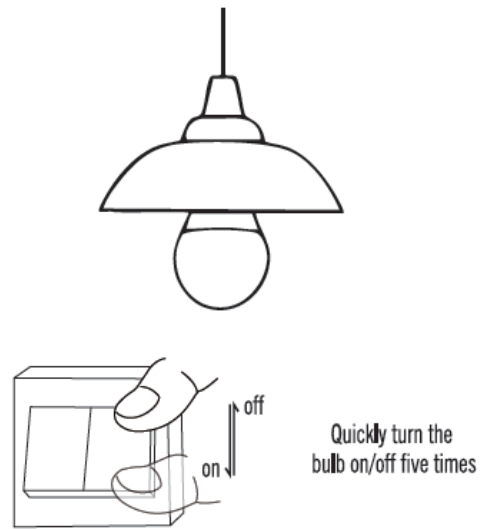


Figure 6

Enter pairing mode



Quickly turn the bulb on/off five times (0.5-1 seconds interval) to enter pairing mode. After successful pairing, the bulb will flash green.



Figure 7
Device added successfully

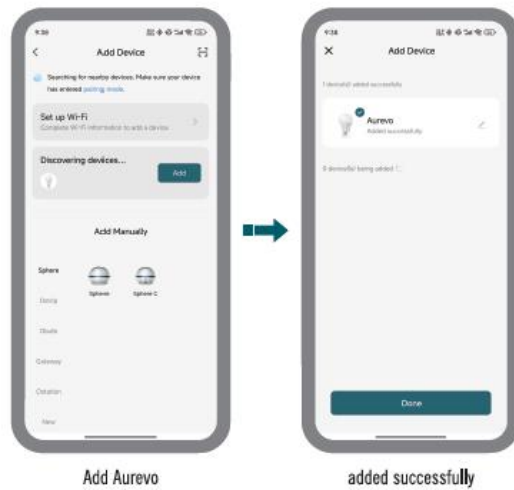


Figure 8
Light control interface



Figure 9
Scene mode selection interface

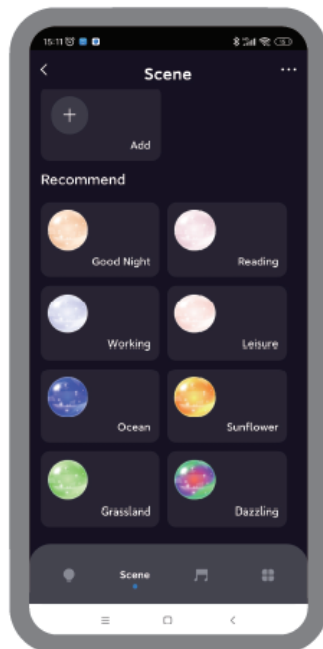


Figure 10
Music mode interface

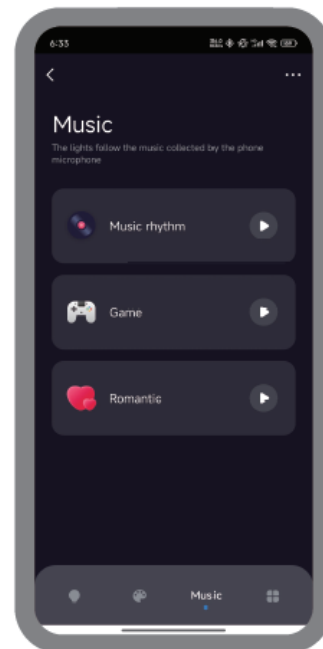


Figure 10
Music mode interface

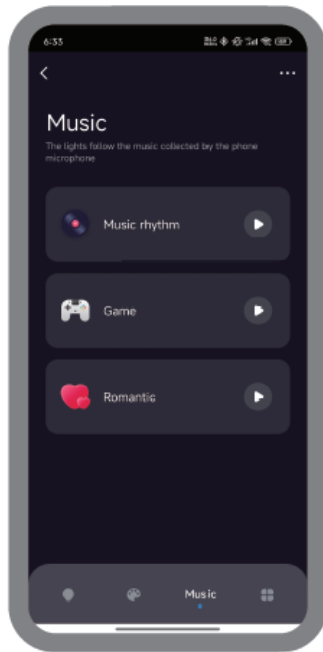
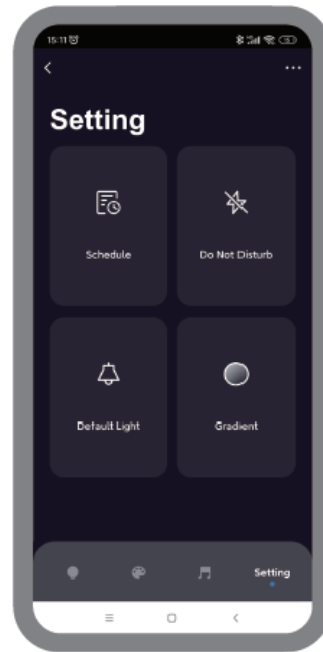


Figure 11
Settings



How to operate:

1. Product specifications, see Table 1.

2. Product overview, see Figure 1.

3. Bulb installation, see Figure 2.

Screw the bulb into the socket tightly. Note: Please turn off the bulb's power supply before installation.

4. APP operation instructions:

4.1 Download the Olight App, see Figure 3.

4.2 Log in to the App, see Figure 4.

4.3 Connect to Wi-Fi, enable the wireless connection feature on your phone, and add a device, see Figure 5.

4.4 Enter pairing mode, see Figure 6.

For the first pairing, quickly turn the bulb on and off five times (0.5-1 seconds interval) to enter pairing mode. After successful pairing, the bulb will flash green continuously.

Note: If the interval is less than 0.5 seconds, pairing may fail, the bulb may turn off, and it will take several seconds before it can be turned on again.

4.5 Device added successfully, see Figure 7.

5. APP Features:

5.1 Light control interface, see Figure 8.

You can turn the bulb on/off, choose lighting modes. Colored light supports color spectrum selection; white light supports color temperature adjustment. Both modes allow stepless dimming.

5.2 Scene mode selection interface, see Figure 9.

Includes various preset scene modes. Users can also customize scenes, selecting Static, Flash, or Breath effects, adjusting color spectrum for colored light, and color temperature for white light, as well as brightness. Custom scenes can be previewed and saved.

5.3 Music mode interface, see Figure 10.

Provides three rhythm modes: Music Rhythm, Game, and Romantic.

5.4 Settings, see Figure 11.

Users can configure Schedule, Do Not Disturb, Default Light, and Gradient.

Danger

- Do not install or replace the bulb while powered on to avoid electric shock.
- Bulb gets hot during operation; do not touch to avoid burns.
- Do not use in damp places like bathrooms to avoid short circuits.
- Do not exceed rated power to avoid overloading, which may cause burning or explosion.
- Keep away from fire or avoid throwing into fire to prevent damage.
- Do not shine directly into eyes to prevent temporary blindness or permanent retinal damage.

Warning

- Make sure the bulb matches the socket; forced installation may damage the socket or break the bulb.
- The bulb is very bright; do not look directly into it.
- Do not use in enclosed fixtures with poor ventilation.
- Do not install near flammable materials.

NOTICE

- A short delay may occur when adjusting color temperature or brightness — this is normal.
- It is recommended to use a professional-grade socket for better heat dissipation.

FCC compliance statement

FCC Compliance Statement

This device complies with part 15 of the FCC Rules. Operation is subject to the following two conditions:

- (1) This device may not cause harmful interference, and
- (2) this device must accept any interference received, including interference that may cause undesired operation.

Any changes or modifications not expressly approved by the party responsible for compliance could void the user's authority to operate the equipment.

Note: This equipment has been tested and found to comply with the limits for a Class B digital device, pursuant to part 15 of the FCC Rules. These limits are designed to provide reasonable protection against harmful interference in a residential installation. This equipment

generates uses and can radiate radio frequency energy and, if not installed and used in accordance with the instructions, may cause harmful interference to radio communications. However, there is no guarantee that interference will not occur in a particular installation. If this equipment does cause harmful interference to radio or television reception, which can be determined by turning the equipment off and on, the user is encouraged to try to correct the interference by one or more of the following measures:

- Reorient or relocate the receiving antenna.
- Increase the separation between the equipment and receiver.
- Connect the equipment into an outlet on a circuit different from that to which the receiver is connected.
- Consult the dealer or an experienced radio/TV technician for help.

This equipment complies with FCC radiation exposure limits set forth for an uncontrolled environment. This equipment should be installed and operated with a minimum distance of 20cm between the radiator & your body.

WEEE Disposal and Recycling Information

All products bearing this symbol are waste electrical and electronic equipment (WEEE as in directive 2012/19/EU) which should not be mixed with unsorted household waste. Instead, to protect human health and the environment, you should dispose of your waste equipment at a designated collection point for the recycling of WEEE, appointed by the government or local authorities. Proper disposal and recycling will help prevent potential negative consequences to the environment and human health. Please contact the installer or local authorities for more information about the location as well as terms and conditions of such collection points.

NOT FOR EMERGENCY LIGHTING

Suitable for luminaires rated 40°C ambient

Operation Frequency: 60Hz

SUITABLE FOR OPEN LUMINAIRES.

This lamp employs light emitting diode technology and unlike tungsten-halogen lamps does not require a barrier. Lamp is suitable for open luminaires

CAUTION-RISK OF ELECTRIC SHOCK.
Do not use if outer lamp envelope is damaged or broken

OLIGHT

Dongguan Olight E-Commerce Technology Co., Ltd
4th Floor, Building 4, Kegu Industrial Park, No. 6 Zhongnan Road,
Chang'an Town, Dongguan City, Guangdong, China.
Made in China

