

INSTRUCTION MANUAL

KA-100 2-CH STEREO KARAOKE AMPLIFIER SYSTEM

STARFAVOR

Please read the instruction manual carefully before operation

Explanation of Graphical Symbols



The lightning flash with arrowhead symbol within an equilateral triangle is intended to alert the user to the presence of uninsulated “dangerous voltage” within the product’s enclosure that may be of sufficient magnitude to constitute a risk of electric shock to persons.



The exclamation point within an equilateral triangle is intended to alert the user to the presence of important operating and maintenance (servicing) instructions in the literature accompanying the product.

FCC ID: 2A44OKA-100

NOTE: This equipment has been tested and found to comply with the limits for a Class B digital device, pursuant to part 15 of the FCC Rules. These limits are designed to provide reasonable protection against harmful interference in a residential installation. This equipment generates uses and can radiate radio frequency energy and, if not installed and used in accordance with the instructions, may cause harmful interference to radio communications. However, there is no guarantee that interference will not occur in a particular installation. If this equipment does cause harmful interference to radio or television reception, which can be determined by turning the equipment off and on, the user is encouraged to try to correct the interference by one or more of the following measures:

- Reorient or relocate the receiving antenna.
- Increase the separation between the equipment and receiver.
- Connect the equipment into an outlet on a circuit different from that to which the receiver is connected.
- Consult the dealer or an experienced radio/TV technician for help

Changes or modifications not expressly approved by the party responsible for compliance could void the user's authority to operate the equipment.

This device complies with Part 15 of the FCC Rules. Operation is subject to the following two

CONDITIONS:

- (1) this device may not cause harmful interference, and
- (2) this device must accept any interference received, including interference that may cause undesired operation.

Usage 1

IMPORTANT SAFETY INSTRUCTIONS

- ❶ Read these instructions.
- ❷ Keep these instructions.
- ❸ Heed all warnings.

- ④ Follow all instructions. ⑤ Do not use this apparatus near water.
- ⑥ Clean only with dry cloth.
- ⑦ Do not block any ventilation openings. Install in accordance with the manufacturer's instructions.
- ⑧ Do not install near any heat sources such as radiators, heat registers, stoves, or other apparatus (including amplifiers) that produce heat.
- ⑨ Do not defeat the safety purpose of the polarized or grounding-type plug. A polarized plug has two blades with one wider than the other. A grounding type plug has two blades and a third grounding prong. The wide blade or the third prong are provided for your safety. If the provided plug does not fit into your outlet, consult an electrician for replacement of the obsolete outlet.
- ⑩ Protect the power cord from being walked on or pinched particularly at plugs, convenience receptacles, and the point where they exit from the apparatus.
- ⑪ Only use attachments/accessories specified by the manufacturer.
- ⑫ Use only with the cart, stand, tripod, bracket, or table specified by the manufacturer, or sold with the apparatus. When a cart is used, use caution when moving the cart/apparatus combination to avoid injury from tip-over.
- ⑬ Unplug this apparatus during lightning storms or when unused for long periods of time.
- ⑭ Refer all servicing to qualified service personnel. Servicing is required when the apparatus has been damaged in any way, such as power-supply cord or plug is damaged, liquid has been spilled or objects have fallen into the apparatus, the apparatus has been exposed to rain or moisture, does not operate normally, or has been dropped.

WARNING: TO REDUCE THE RISK OF FIRE OR ELECTRIC SHOCK, DO NOT EXPOSE THIS APPARATUS TO RAIN OR MOISTURE. (UL 60065_03)

Usage 2

PRECAUTIONS

PLEASE READ CAREFULLY BEFORE PROCEEDING

Keep the manual in a safe place for future reference.



Warning

Always follow the basic precautions listed below to avoid the possibility of serious injury or even death from electrical shock, short-circuiting, damages, fire or other hazards. These precautions include, but are not limited to, the following:

Important! Before Using Your Amplifier!

● Power Supply

- ❶ Use only the supplied power cord/plug. If you intend to use the product in an area other than in the one you purchased, the included power cord may not be compatible.
- ❷ Only use the voltage specified as correct for the product. The required voltage is printed on the name plate of the product.
- ❸ Do not place the power cord near heat sources such as heaters or radiators, and do not excessively bend or otherwise damage the cord, place heavy objects on it, or place it in a position where anyone could walk on, trip over, or roll anything over it.
- ❹ Make sure to fully insert the electric plug to prevent electric shocks or fire.
- ❺ When setting up the product, make sure that the AC outlet you are using is easily accessible. If some trouble or malfunction occurs, immediately turn off the power switch and disconnect the plug from the outlet. Even when the power switch is turned off, as long as the power cord is not unplugged from the wall AC outlet, the product will not be disconnected from the power source.
- ❻ Be sure to connect to an appropriate outlet with a protective grounding connection. Improper grounding can result in electrical shock, fire, or damage.
- ❼ Remove the electric plug from the outlet when the product is not to be used for extended periods of time.
- ❽ Do not touch the product or the electric plug during an electrical storm.

● Do not open

- ❶ This product contains no user-serviceable parts. Do not attempt to disassemble the internal parts or modify them in any way.

● Connection

- ❶ Before turning the power of all devices on or off, make sure that all volume levels are set to the minimum. Failing to do so may result in hearing loss or device damage.
- ❷ When turning on the AC power in your audio system, always turn on the product LAST, to avoid hearing loss and speaker damage. When turning the power off, the product should be turned off FIRST for the same reason.

● Location

- ❶ Do not place the product in an unstable position or a location with excessive vibration, where it might accidentally fall over and cause injury.
- ❷ Keep this product out of reach of children. This product is not suitable for use in locations where children are likely to be present.
- ❸ When installing the product:
 - Do not cover it with any cloth.
 - Do not install it on a carpet or rug.
 - Make sure the top surface faces up; do not install on its sides or upside down.
 - Do not use the product in a confined, poorly-ventilated location.

- Inadequate ventilation can result in overheating, possibly causing damage to the product(s), or even fire. Make sure that there is adequate space around the product: at least 20cm above, 20cm at the sides and 20cm behind.

- ④ Do not place the product in a location where it may come into contact with corrosive gases or salt air. Doing so may result in malfunction.
- ⑤ Before moving the product, remove all connected cables.
- ⑥ Do not press the rear panel of the product against the wall. Doing so may cause the plug to come in contact with the wall and detach from the power cord, resulting in short circuiting, malfunction, or even fire.

● **Water / Fire warning**

- ① Do not expose the product to rain, use it near water or in damp or wet conditions, or place on it any containers (such as vases, bottles or glasses) containing liquids which might spill into any openings.
- ② Never insert or remove an electric plug with wet hands.
- ③ Do not place any burning items or open flames near the product, since they may cause a fire.

● **Abnormality**

- ① If any of the following problems occur, immediately turn off the power switch and disconnect the electric plug from the outlet.

- The power cord or plug becomes frayed or damaged.
- Unusual smells or smoke are emitted.
- Some object, or water has been dropped into the product.
- There is a sudden loss of sound during use of the product.
- Cracks or other visible damage appear on the product.

● **Handling and Maintenance**

- ① Do not use the product in the vicinity of a TV, radio, or other electric products. Otherwise, the product, TV, or radio may generate noise.
- ② Do not expose the product to excessive dust or vibration, or extreme cold or heat, in order to prevent the possibility of panel disfiguration, unstable operation, or damage to the internal components.
- ③ Do not install in locations where temperature changes are severe. Otherwise, condensation may form on the inside or the surface of the product, causing it to break or deform the wood.
- ④ Do not leave condensation on the wood; wipe immediately with a soft cloth.

If there is reason to believe that condensation might have occurred, leave the product for several hours without turning on the power until the condensation has completely dried out, in order to prevent possible damage.

Do not touch the speaker driver unit, since it might cause malfunction.

Do not place vinyl, plastic or rubber objects on the product, since this might cause alteration or discoloration of the panel.

- ⑧ When cleaning the product, use a dry and soft cloth. Do not use paint thinners, solvents, cleaning fluids, or chemical impregnated wiping cloths, since this might cause alteration or discoloration.
- ⑨ Do not place the speaker face down.
- ⑩ Air blowing out of the bass reflex ports is normal, and often occurs when the speaker is handling program material with heavy bass content.
- ⑪ Always turn the power off when the device is not in use.

Notes: STARFAVOR cannot be held responsible for damage caused by improper use or modifications to the device.

Usage 3

OVERVIEW

Thank you for purchasing the STARFAVOR KA-100 2-CH Stereo Karaoke Amplifier System / Receiver.

The STARFAVOR KA-100 2-CH Stereo Karaoke Amplifier System / Receiver is perfect for your karaoke and home theater acoustic sound system. Gives you 200W power (4Ω) and accommodates a pair of speakers for high quality amplified audio, amplifies and enjoy your home audio experience in the comfort of your home.

This home audio amplifier system supports various external sources: 2 X RCA audio input for tuner, CD player or tape deck, 1 Sub output for boosting the bass frequency with external active sub woofer, 2 X 1/4" microphone Input with echo effect, USB and SD card input and FM radio receiver. Built in BT wireless lets you wirelessly stream your favorite music service, podcasts, and more from other BT wireless devices.

The STARFAVOR KA-100 2-CH Stereo Karaoke Amplifier System / Receiver allows you to adjust the frequency with your favorite bookshelf speaker via internal 3 band equalizer, gives you a perfect match with most kinds of passive speakers.

This compact and integrated home audio amplifier has a built-in LED display for showing Mode, Track and Folder name. FM antenna and remote control are also included in the package for distant audio adjustments.

- 200 watts power @ 4 ohms impedance for enjoying high quality music.
- 2 Mic inputs with echo effect for home karaoke.
- 2 X RCA audio input for tuner, CD player or tape deck.
- Support BT wireless input, USB and SD card input and FM radio receiver with FM antenna.
- 3 band equalizer for adjust the frequency with your favorite bookshelf speaker.
- 1 Sub output for boosting the bass frequency with external active sub woofer.
- Built-in LED display for showing Mode, Track and Folder name
- HIFI quality design, accurate frequency response, precise acoustic field.

Usage 4

SUPPLIED ITEMS

- STARFAVOR KA-100 2-CH Stereo Karaoke Amplifier System / Receiver
- Remote control
- FM antenna
- RCA to 1/8" stereo cable X 1
- RCA to RCA cable X 1
- Speaker Cables X 2

Usage 5

PANEL LAYOUT



1 Power Switch: Turns power to the amplifier ON/OFF.

Notes: Turning the power switch ON and OFF in rapid succession can cause the device's electronics to malfunction. Please wait for 3 seconds or more after turning the power OFF before turning it ON again.

Even when the power switch is turned off, electricity is still flowing to the product at the minimum level. When you are not using the product for a long time, make sure to unplug the power cord from the wall AC outlet.

2 MIC VOL: Sets the gain of Mic inputs. The maximum mic gain is 65dB.

3 MIC1: 3.1/4" TS input for connecting microphone. Supports connecting two microphones simultaneously.

4 MIC2: 1/4" TS input for connecting another microphone. Supports connecting two microphones simultaneously.

5 ECHO: Adjusts the echo effect level of mic input.

6 BASS: Adjusts the low-frequency response of music playing at 300Hz by ± 8 dB.

7 MID: Adjusts the mid-frequency response of music playing at 1KHz by ± 8 dB.

8 TREBLE: Adjusts the high-frequency response of music playing at 10KHz by ± 8 dB.

9 LED Display: LED Display for showing Mode, Track and Folder name.

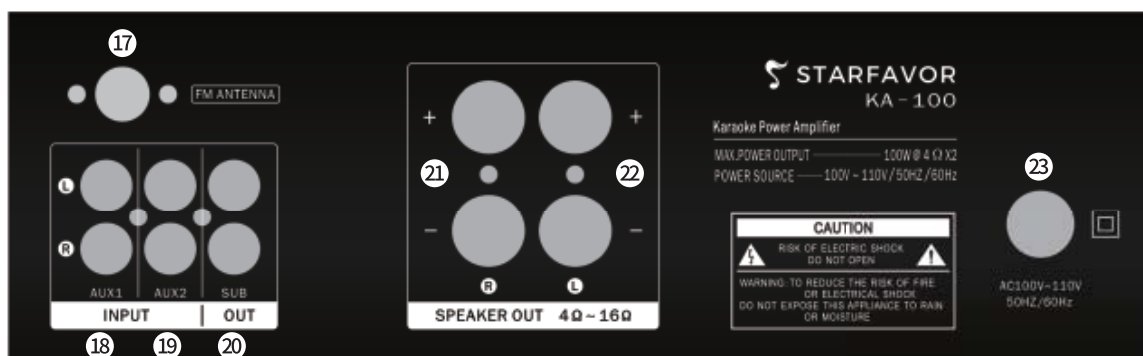
10 PREV Button: Turns to PREV song or PREV FM station.

11 Play/Pause Button: Play/Pause the music or scans from lower to higher frequency FM stations.

12 NEXT Button: Turns to next song or next FM station.

- ⑬ **MODE:** Selects the AUX mode, BLUE mode(BT wireless), FM mode or USB/SD Card Mode (If plugged in).
- ⑭ **OUTPUT:** Adjusts the output level of the amplifier for speaker outputs.
- ⑮ **USB:** USB input for connecting USB Flash Drive to playing music. While plugged in.
- ⑯ **SD/MMC Card:** For connecting SD card or MMC card to playing music.

Notes: STARFAVOR KA-100 only support USB Flash Drive, SD card or MMC card format of FAT32 and NTFS. Please format your USB Flash Drive,SD card or MMC card and change it to the format of FAT32 and NTFS if it can not be recognized.

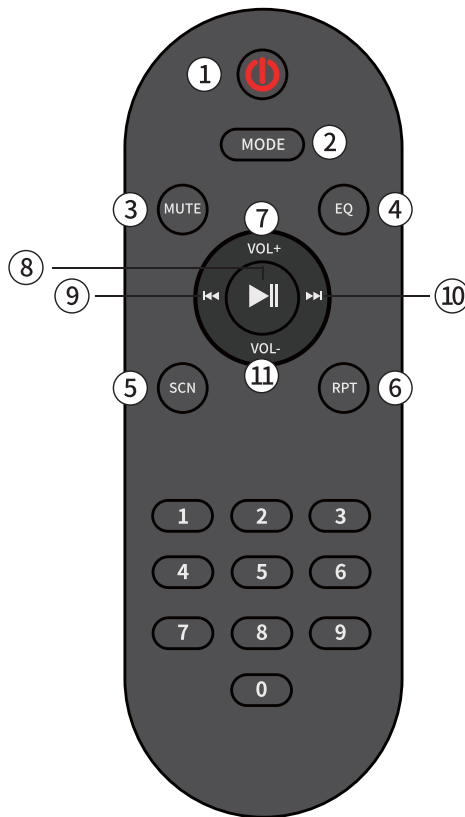


- ⑰ **FM Antenna:** For connecting FM antenna.
- ⑱ **AUX1:** RCA audio input for connecting to tuner, CD player or tape deck.
- ⑲ **AUX2:** RCA audio input for connecting to tuner, CD player or tape deck.
- ⑳ **SUB OUT:** RCA sub output for boosting the bass frequency with external active sub woofer.
- ㉑ **Speaker Out R:** For connecting to the bookshelf speakers or other passive speakers of the right channel. Connect speaker cables with the polarities + (red)/- (black) matched between the amplifier and the speakers. Connect speakers with a nominal impedance of 4 ohms to 16 ohms.
- ㉒ **Speaker Out L:** For connecting to the bookshelf speakers or other passive speakers of the left channel. Connect speaker cables with the polarities + (red)/- (black) matched between the amplifier and the speakers. Connect speakers with a nominal impedance of 4 ohms to 16 ohms.
- ㉓ **AC Power:** Connects the power plug to AC100V - 110V, 50Hz/60Hz.

Remote Control

Notes: Please install 2 X AAA size batteries(Not included) first before using Remote Control.

- ① **Power Switch:** Turns power to the amplifier ON/OFF.
- ② **MODE:** Selects the AUX mode, BLUE mode(BT wireless), FM mode or USB/SD Card Mode (If plugged in).
- ③ **Mute:** Mute the output volume of the amplifier.
- ④ **EQ:** Adjust the EQ function. Only can be used in USB/SD Card mode.
- ⑤ **SCN:** Press the SCN(scan) button to achieve FM scan function.



6 RPT: To set the tracks in repeat or play in order . Only can be used in USB/SD Card mode.

7 VOL+: Adjust the volume of the amplifier.

8 Play/Pause Button: Play/Pause the music or scans from lower to higher frequency FM stations.

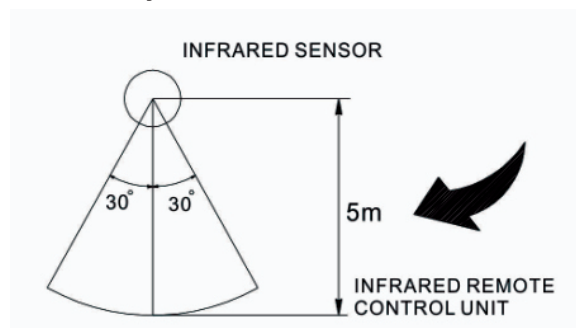
9 PREV Button: Turns to PREV song or PREV FM station.

10 NEXT Button: Turns to next song or next FM station.

11 VOL-: Adjust the volume of the amplifier.

12 Numbers: Select the track directly.

Notes: The remote control only can be affected within 5 meters and ± 30 degrees.



Usage 6

SETUP

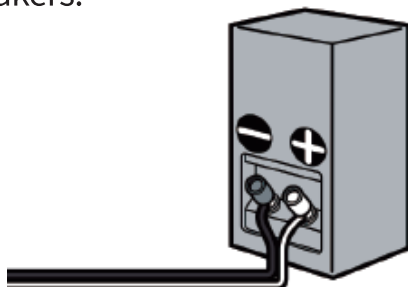
Notes:

- Connect speakers with a nominal impedance of 4 ohms to 16 ohms.

- Before connecting cables, be sure to disconnect the AC power cord (mains lead).
- Before connecting the AC power cord (mains lead), make sure that metallic wires of the speaker cables are not touching each other between the SPEAKERS terminals or on the receiver rear panel. If the wires are touching, it may result in damage to the amplifier circuit.

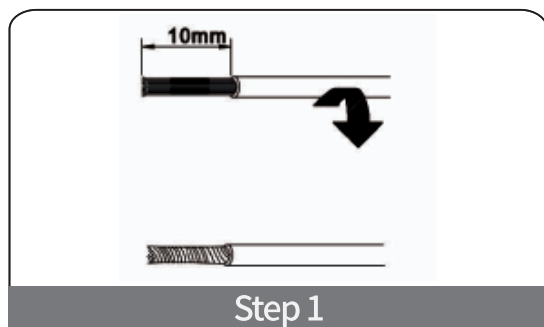
How to connect speaker cables

Connect speaker cables with the polarities + (red)/– (black) matched between the receiver and the speakers.

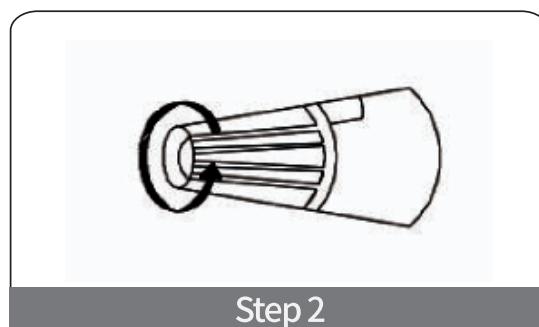


Connect the speakers with wire:

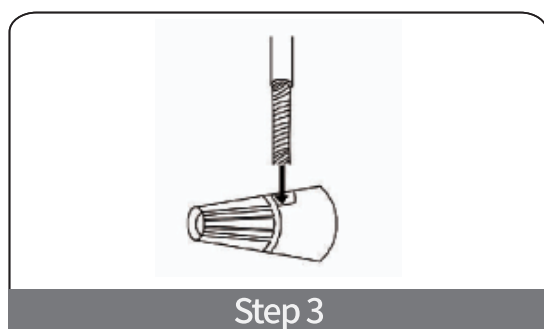
- 1 Twist wire coating off.



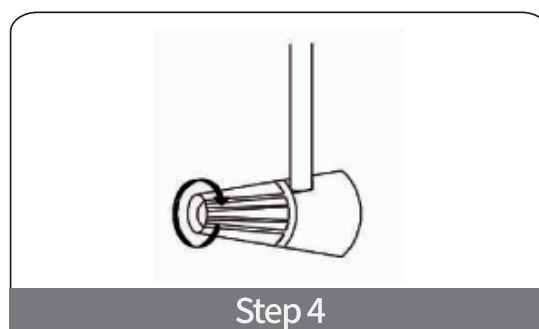
- 2 Loose the terminal anti-clockwise.



- 3 Insert the bare wire.

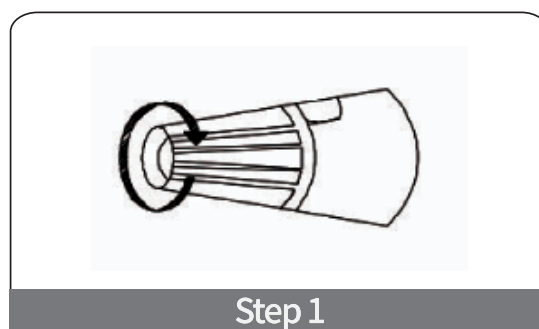


- 4 Tighten the terminal.

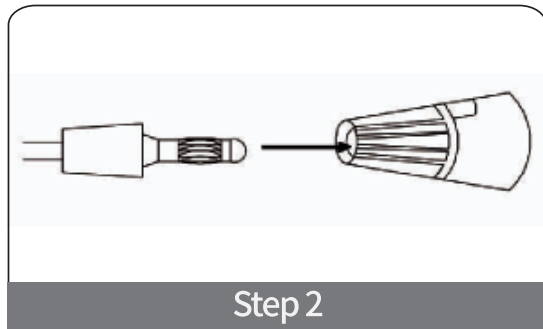


Connect the speakers with a banana plug:

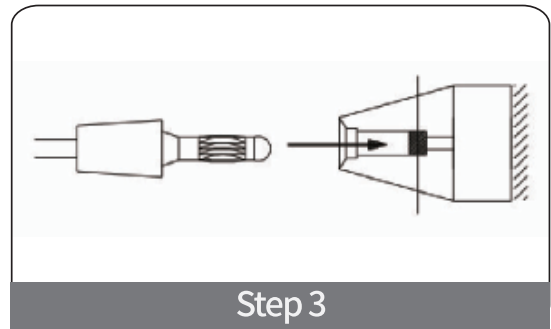
- 1 Tighten the speaker terminal.



- ② Insert the banana plug tightly into the terminal.



- ③ Profile.

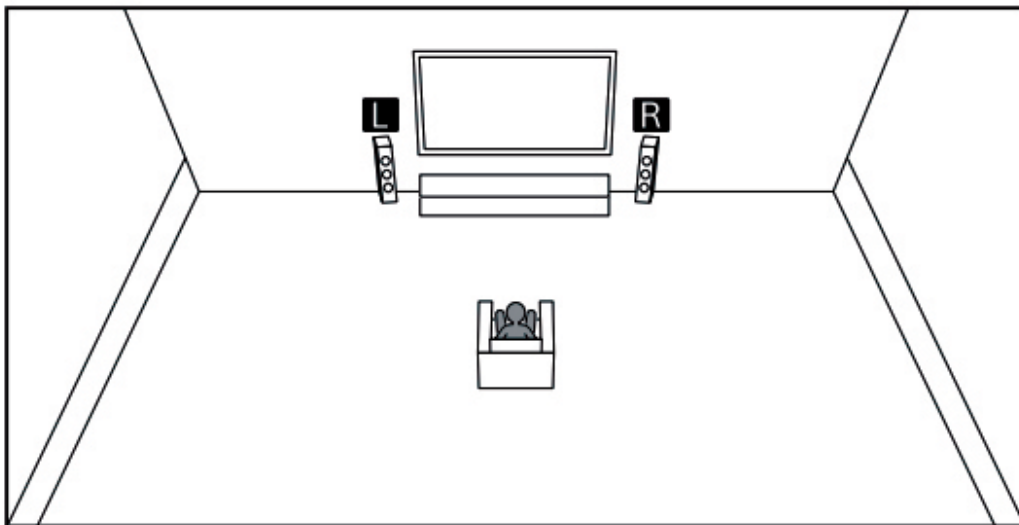


Notes: The sound will be distorted or no bass if misplace the left speaker with right or misplace the poles. Any wrong connection will cause malfunction or even damage the unit.

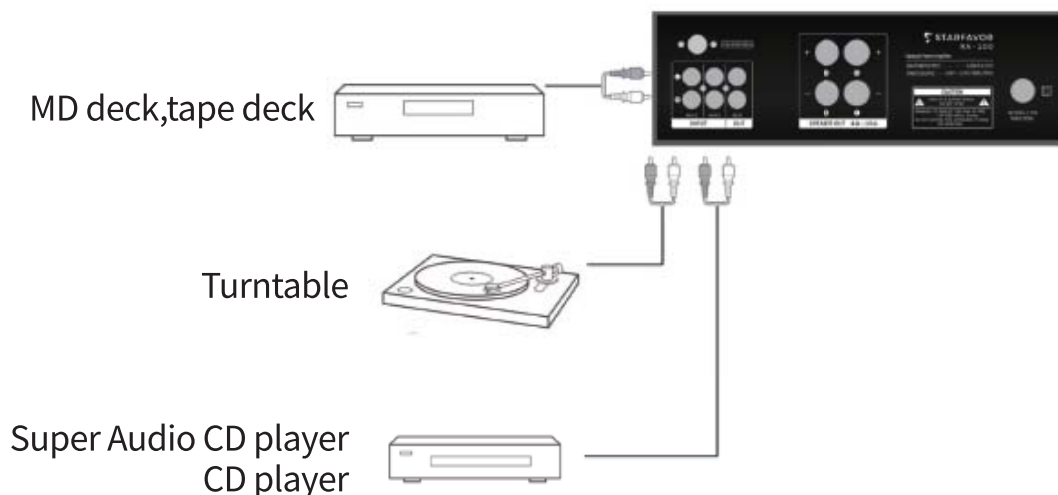
Usage 7

PLACEMENT

You can enjoy the music with STARFAVOR KA-100 2-CH Stereo Karaoke Amplifier System / Receiver in the location as the refer to the following:



Connecting Audio devices:



Usage 8

BT MODE

Pairing is an operation in which BT wireless devices are registered to each other before connection. Follow the steps below to pair the BT wireless device and the receiver. Once the BT wireless devices are paired, there is no need to pair them again.

- 1 Place the BT wireless device within 1 meter (3.3 feet) of the receiver.
- 2 Press **Mode Button** to the mode “BLUE”.
- 3 Select “**KA-100**” on the BT wireless device display.
- 4 Start playback on the BT wireless device.
- 5 Adjust the volume of the BT wireless device first. If the volume level is still too low, Rotate the Output knob to adjust the volume level of the receiver.

Usage 9

SPECIFICATIONS

Input	2 X 1/4” TS Mic Input; 1 X USB Drive Input; 1 X SD/MMC Card Input; 2 X RCA Input
Output	1 X Sub Output; 1 pair of Speaker Outputs (4Ω - 16Ω)
Power Requirements	AC 100V - 110V ~ 50/60Hz
Output Power	200 Watts (2 X 100 watts at 4Ω)
Frequency Response	20Hz - 20KHz
Maximum Input Level	250mV/47K
Signal noise ratio	≥80dB
THD+N	≤0.1%
Mic Input Impedance	10KΩ
Load Impedance	4Ω - 16Ω
Aux Input Impedance	22K
Sub Out Impedance	47K
Bass	300Hz/±8dB
Mid	1000Hz/±8dB
Treble	10000Hz/±8dB
Weight	2.55KG(Net weight)
Dimensions	315mm X 130mm X 265mm
Accessories	Owner’ s Manual; Remote control; FM antenna; RCA to 1/8” stereo cable X 1; RCA to RCA cable X 1; Speaker Cables X 2

Notes: Any specification’ s update will not be amended in this manual.

Symptom	Solution
No sound or only a very low level of sound is heard, no matter which device is selected.	Check that all connecting cables are inserted to their input/output jacks on the receiver, speakers and the devices.
	Check that the receiver and all devices are turned on.
	Check that VOLUME on the receiver is not set to "VOL MIN".
	Try pressing the MODE button to select the input to which you want to listen.
	The protective device on the receiver has been activated. Turn off the receiver, eliminate the short-circuit problem, and turn on the power again.
	Make sure you have connected to both the L and R jacks of an analog device, as analog devices require both L and R jack connections.
There is severe humming or noise.	Check that the speakers and device are connected securely.
	Make sure that the connecting cables are not near a transformer or motor.
	Move your audio device away from the TV.
	If the plugs and jacks are dirty, wipe them with a cloth slightly moistened with alcohol.
Noisy or distorted sound	Replace faulty or broken cable(s).
	Try changing the positions or layout of the cables.
	Try changing the location of other electrical / electronic devices that are near the speakers.

