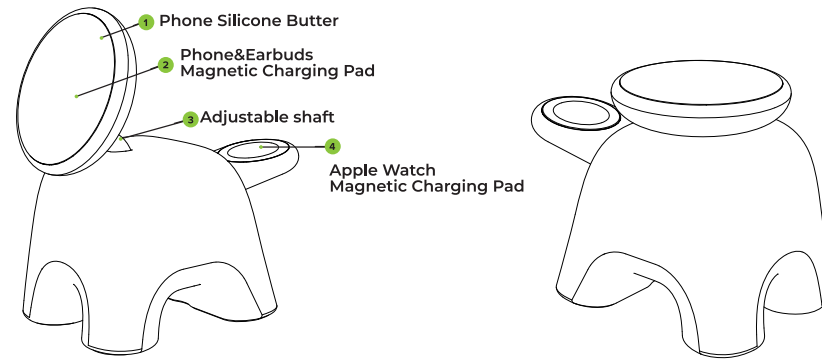


## 2-in-1 Magnetic Wireless Charging Station

### QUICK START GUIDE

### Product Overviews



### Compatible Details

- Phones
  - iPhone 15 Series
  - iPhone 14 Series
  - iPhone 13 Series
  - iPhone 12 Series
- Apple Watch
  - Apple Watch Series(1-9)
  - Apple Watch SE
  - Apple Watch Ultra(1-2)
- Wireless Earbuds
  - Airpods Pro 2nd/ Pro
  - Airpods 3rd/ 2nd
  - wireless charging case version
  - Other Qi-enabled earbuds

### Packaging Contents

- Magnetic Wireless Charging Station
- 1.5M(5ft) USB C to C Cable
- Quick Start Guide

### Techniical Parameters

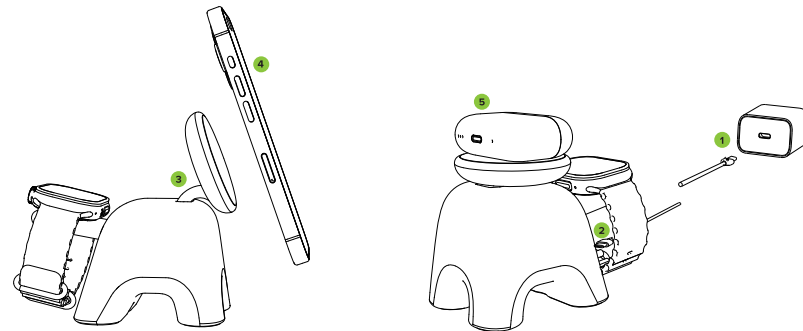
Item	2-in-1 Magnetic Wireless Charging Station	
Input	9V === 3A	
Output	Phone:15W(Max)	Apple Watch:3W(Max)

### FCC Warning

This device complies with part 15 of the FCC Rules. Operation is subject to the following two conditions:  
(1) This device may not cause harmful interference.  
(2) This device must accept any interference received, including interference that may cause undesired operation.  
**CAUTION:** Any changes or modification no expressly approved by party responsible for compliance could void the user's authority to operate the equipment.  
**NOTE:** This equipment has been tested and found to comply with the limits for a Class B digital device, pursuant to Part 15 of the FCC Rules. These limits are designed to provide reasonable protection against harmful interference in a residential installation. This equipment generates, uses and can radiate radio frequency energy and, if not installed and used in accordance with the instructions, may cause harmful interference to radio communications. However, there is no guarantee that interference will not occur in a particular installation. If this equipment does harmful interference to radio or television reception, which can be determined by turning the equipment off and on, the user is encouraged to try to correct the interference by one or more of the following measures:  
· Reorient or relocate the receiving antenna.  
· Increase the separation between the equipment and receiver.  
· Connect the equipment into an outlet on a circuit different from that to which the receiver is connected.  
· Consult the dealer or an experienced radio/TV technician for help.  
**FCC RF exposure statement:**  
The equipmen complies with FCC radiation exposure limits set forth for an uncontrolled environment. This equipment should be installed and operated with minimum distance between 20cm the radiator your body.

### Quick Guidance

Please carefully reading this quick guidance before use, that will help you get a better charging experience.

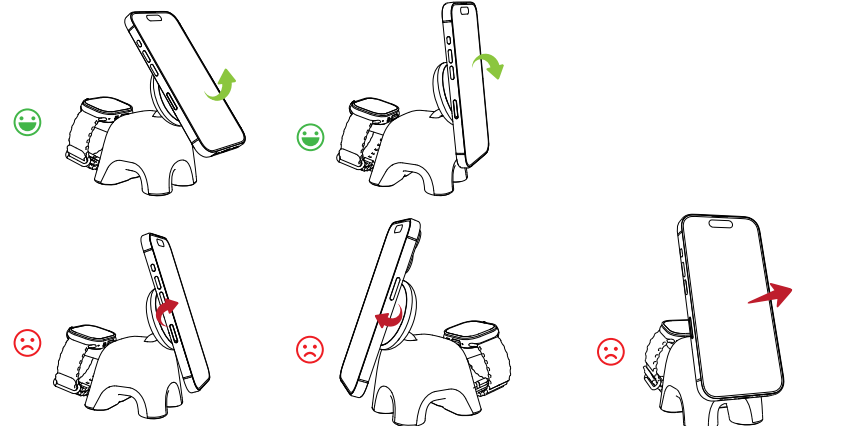


- 1 if the product not working or no fast charging, please unplug the charging cable and plug it in again, and must ensure the cord heads are fully inserted into the adapter and product port.
- 2 The phone charging place can be adjusted up and down by 60 degrees, when adjusting the angle, please removing your phone first.
- 3 Magnetic feature only works for iPhone 12/13/14/15 series(Magsafe iPhone), and only compatible with Magsafe case.

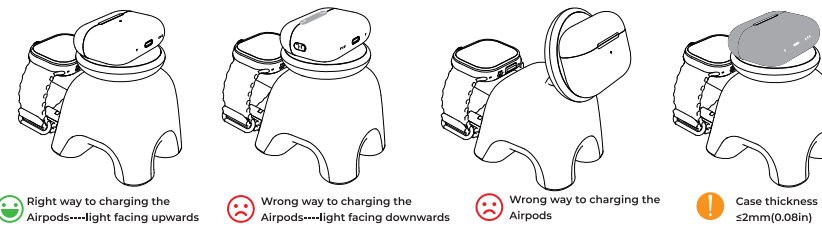


★ iPhone 11 series and earlier models need to be charged with MagSafe Case.

#### ★ Better ways to remove your phone



- 3 For the earbuds charging part, it can work with all Qi-enable earbuds, Specially, for Airpods, please check your Airpods case support wireless charging and keep your Airpods protection case thickness ≤2mm(0.08in) to get a better charging experience.



#### ❗ How to identify the WIRELESS CHARGING case?

- ★ This product is designed to charge the following AirPods case models:  
✓ A2700 ✓ A2566 ✓ A2190  
✓ A2968 ✓ A1938  
★ Important: This product does not support charging for the following AirPods case models:  
✗ A2897 ✗ A1602

#### ❗ Why does the charging speed slow down after battery charging to 80%?

To reduce battery aging, there are 3 options(1.Optimized Battery Charging; 2.Clean Energy Charging; and 3.Charging Optimization 80% Limit ) opened on you iPhone&Apple Watch, that will limit the charging speed, please check following the steps:

Step1: ⚙ Settings

Step2: 🔋 Battery

Step3: Battery Health&Charging

