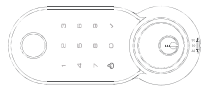


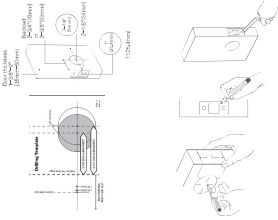
LAXRE

Install instructions

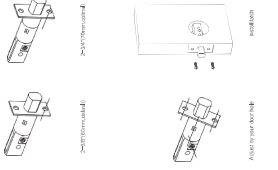


Installation Video

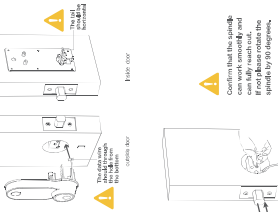
1 Prepare The Door



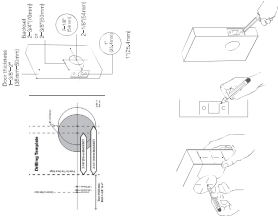
2 Install Latch & Strike Plate



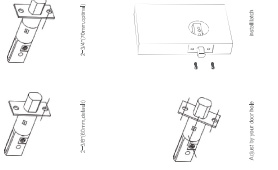
3 Install Exterior Lock Part



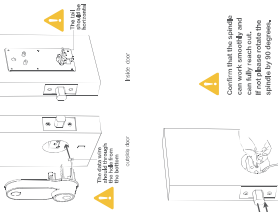
4 Install Interior Mounting Plate



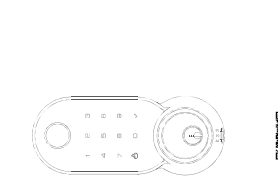
5 Set the direction of turnpiece and Test Operation



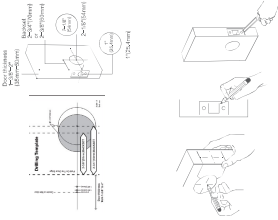
6 Install Batteries & Cover



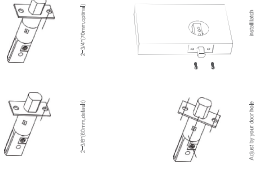
7 Connecting the distance



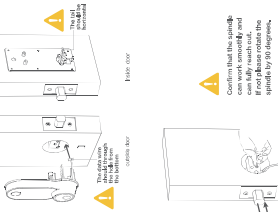
8 Install interior mounting plate



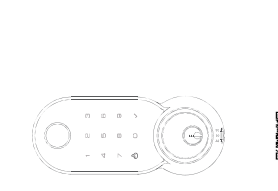
9 Set the direction of turnpiece and Test Operation



10 Install Batteries & Cover

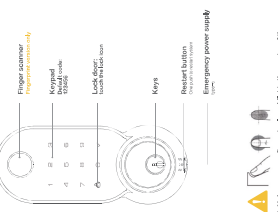


11 Connecting the distance

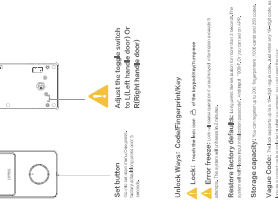


Programming instructions

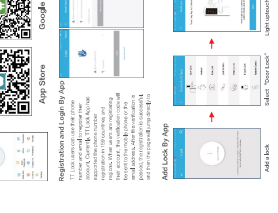
1 MUST KNOW



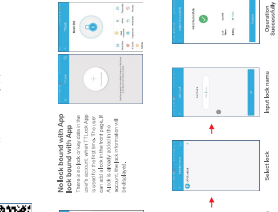
2 LOCK USER MANUAL



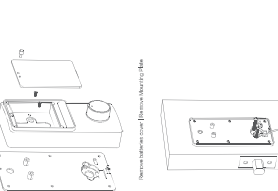
3 LOCK APP



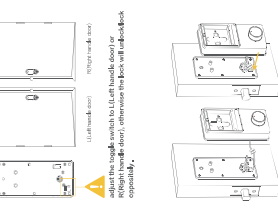
4 LOCK APP



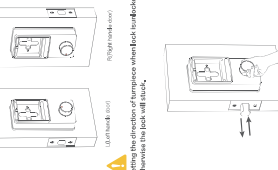
5 Install interior mounting plate



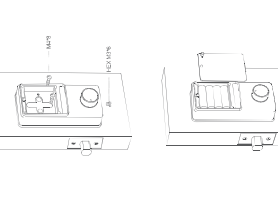
6 Install interior mounting plate



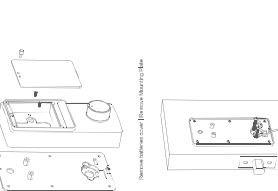
7 Set the direction of turnpiece and Test Operation



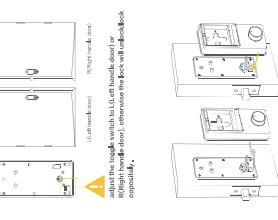
8 Install Batteries & Cover



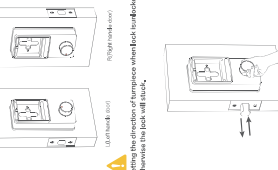
9 Connecting the distance



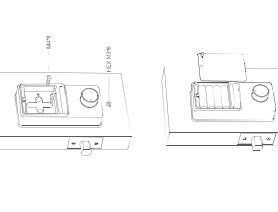
10 Install interior mounting plate



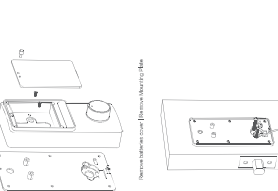
11 Set the direction of turnpiece and Test Operation



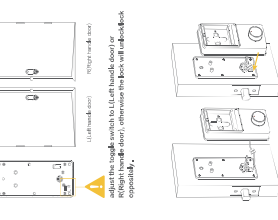
12 Install Batteries & Cover



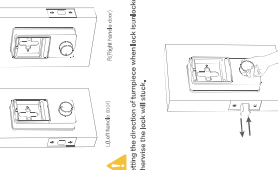
13 Connecting the distance



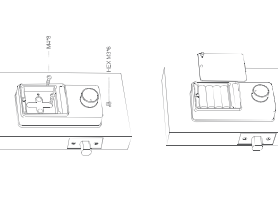
14 Install interior mounting plate



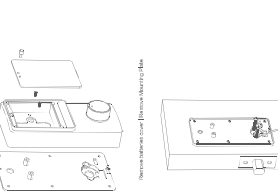
15 Set the direction of turnpiece and Test Operation



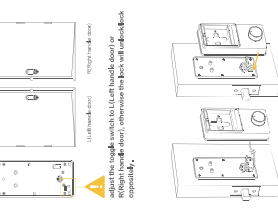
16 Install Batteries & Cover



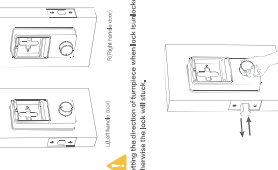
17 Connecting the distance



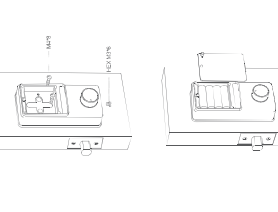
18 Install interior mounting plate



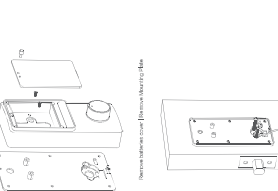
19 Set the direction of turnpiece and Test Operation



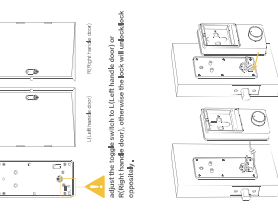
20 Install Batteries & Cover



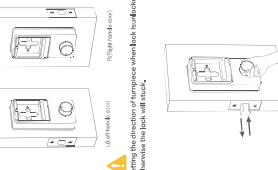
21 Connecting the distance



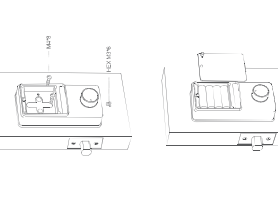
22 Install interior mounting plate



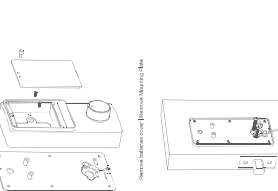
23 Set the direction of turnpiece and Test Operation



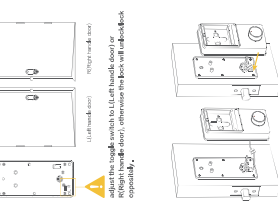
24 Install Batteries & Cover



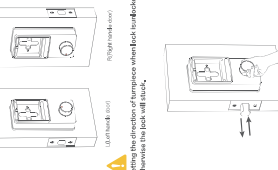
25 Connecting the distance



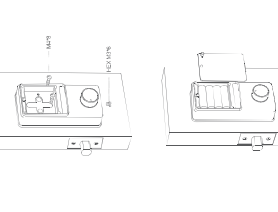
26 Install interior mounting plate



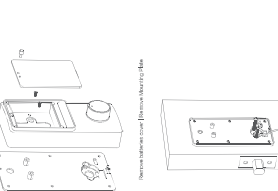
27 Set the direction of turnpiece and Test Operation



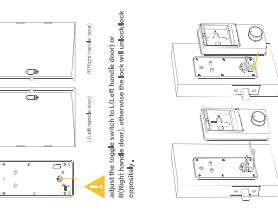
28 Install Batteries & Cover



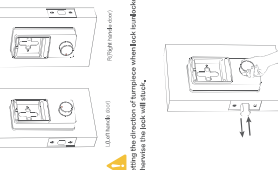
29 Connecting the distance



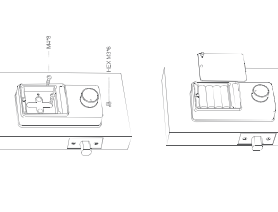
30 Install interior mounting plate



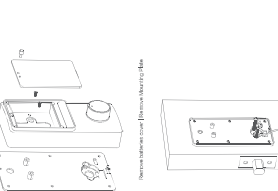
31 Set the direction of turnpiece and Test Operation



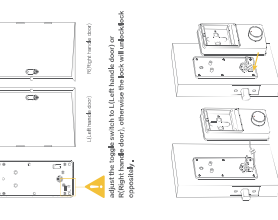
32 Install Batteries & Cover



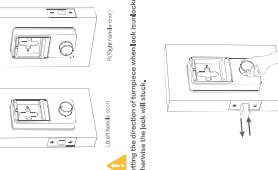
33 Connecting the distance



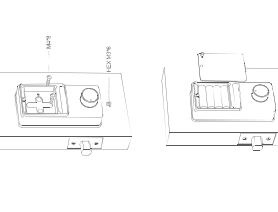
34 Install interior mounting plate



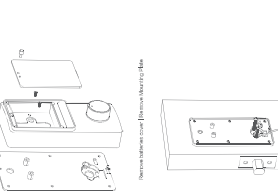
35 Set the direction of turnpiece and Test Operation



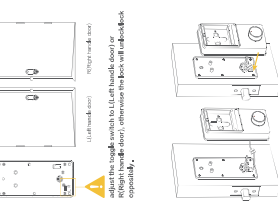
36 Install Batteries & Cover



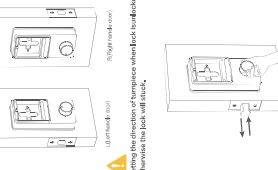
37 Connecting the distance



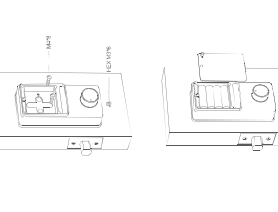
38 Install interior mounting plate



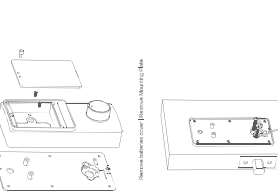
39 Set the direction of turnpiece and Test Operation



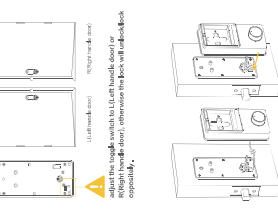
40 Install Batteries & Cover



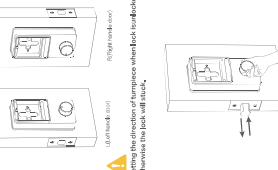
41 Connecting the distance



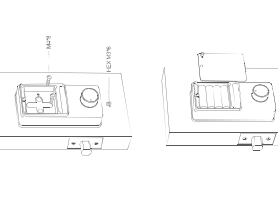
42 Install interior mounting plate



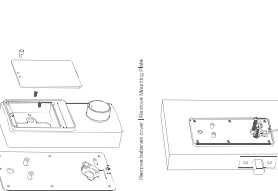
43 Set the direction of turnpiece and Test Operation



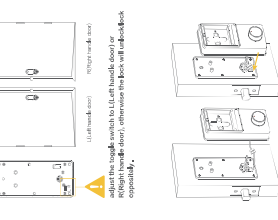
44 Install Batteries & Cover



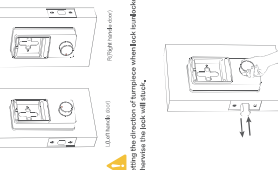
45 Connecting the distance



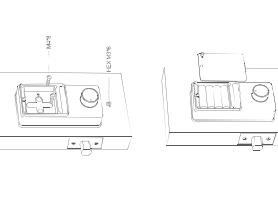
46 Install interior mounting plate



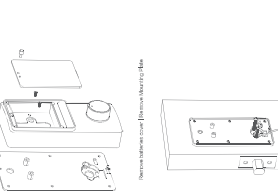
47 Set the direction of turnpiece and Test Operation



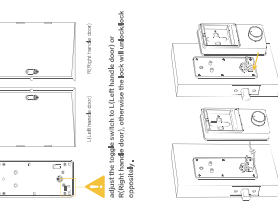
48 Install Batteries & Cover



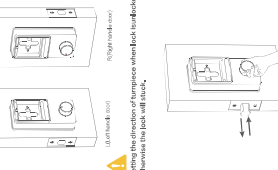
49 Connecting the distance



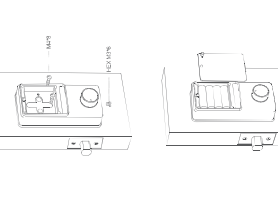
50 Install interior mounting plate



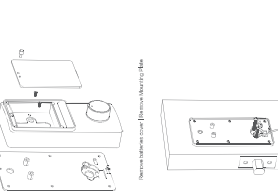
51 Set the direction of turnpiece and Test Operation



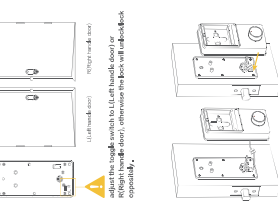
52 Install Batteries & Cover



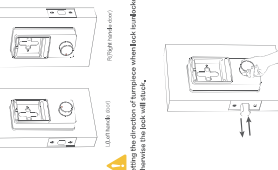
53 Connecting the distance



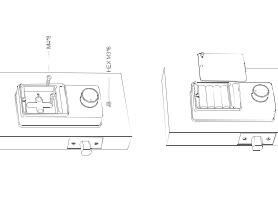
54 Install interior mounting plate



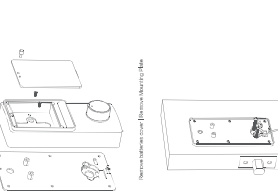
55 Set the direction of turnpiece and Test Operation



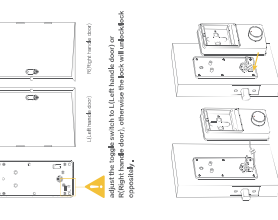
56 Install Batteries & Cover



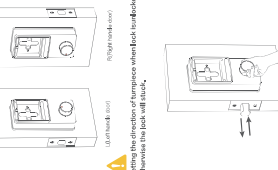
57 Connecting the distance



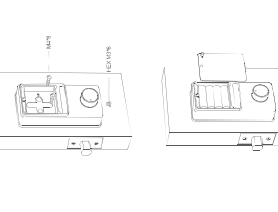
58 Install interior mounting plate



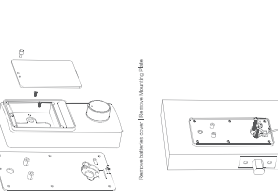
59 Set the direction of turnpiece and Test Operation



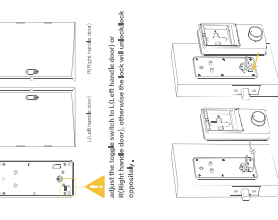
60 Install Batteries & Cover



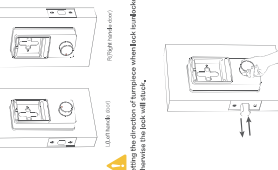
61 Connecting the distance



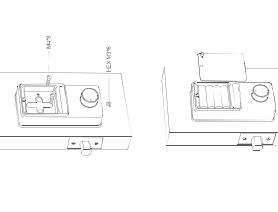
62 Install interior mounting plate



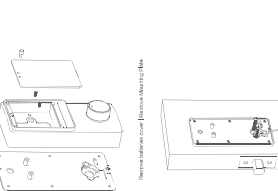
63 Set the direction of turnpiece and Test Operation



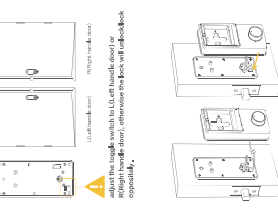
64 Install Batteries & Cover



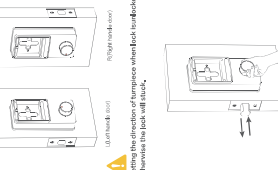
65 Connecting the distance



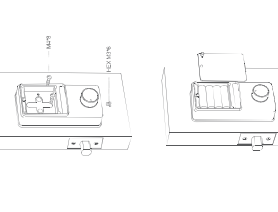
66 Install interior mounting plate



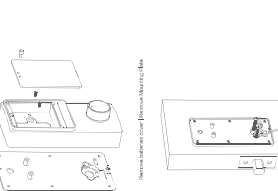
67 Set the direction of turnpiece and Test Operation



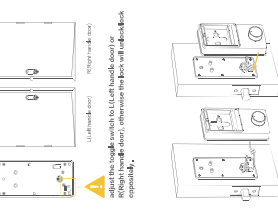
68 Install Batteries & Cover



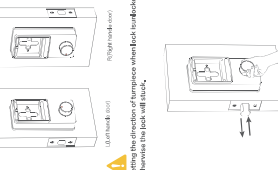
69 Connecting the distance



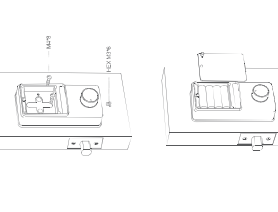
70 Install interior mounting plate



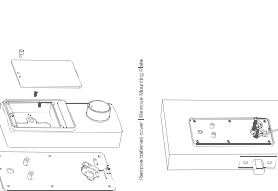
71 Set the direction of turnpiece and Test Operation



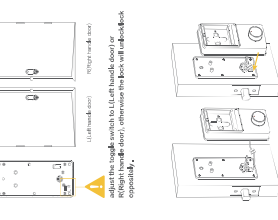
72 Install Batteries & Cover



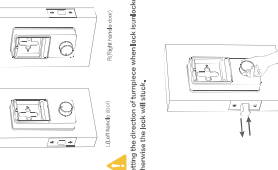
73 Connecting the distance



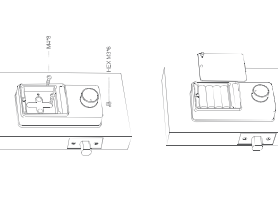
74 Install interior mounting plate



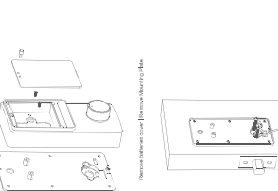
75 Set the direction of turnpiece and Test Operation



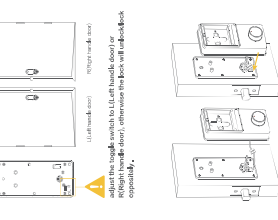
76 Install Batteries & Cover



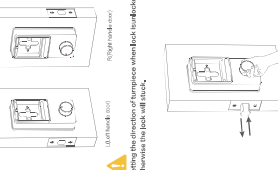
77 Connecting the distance



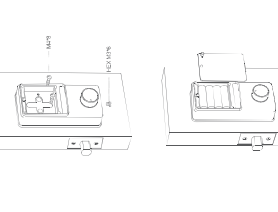
78 Install interior mounting plate



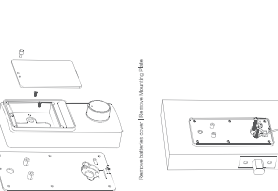
79 Set the direction of turnpiece and Test Operation



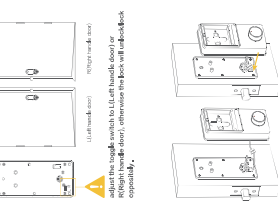
80 Install Batteries & Cover



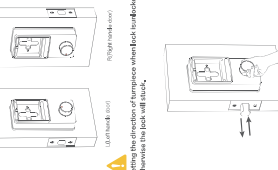
81 Connecting the distance



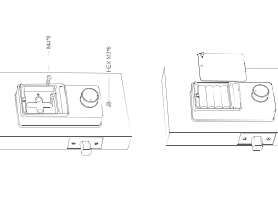
82 Install interior mounting plate



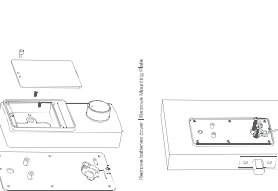
83 Set the direction of turnpiece and Test Operation



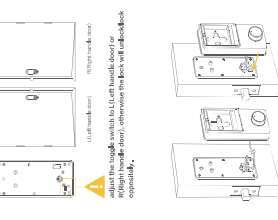
84 Install Batteries & Cover



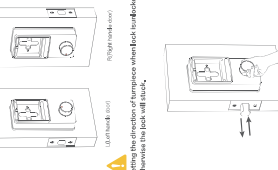
85 Connecting the distance



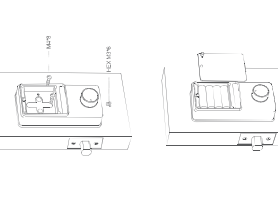
86 Install interior mounting plate



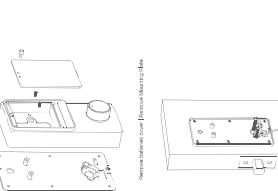
87 Set the direction of turnpiece and Test Operation



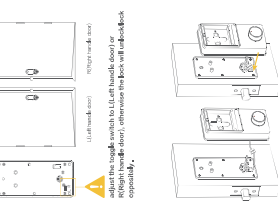
88 Install Batteries & Cover



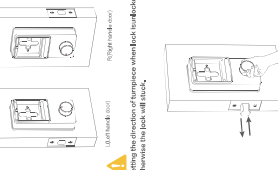
89 Connecting the distance



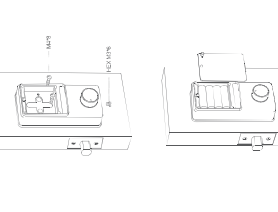
90 Install interior mounting plate



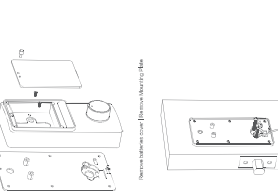
91 Set the direction of turnpiece and Test Operation



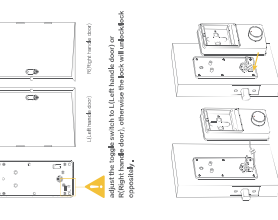
92 Install Batteries & Cover



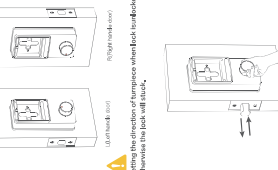
93 Connecting the distance



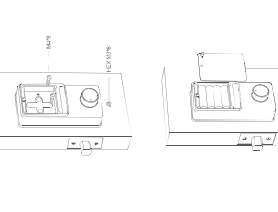
94 Install interior mounting plate



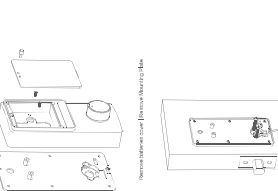
95 Set the direction of turnpiece and Test Operation



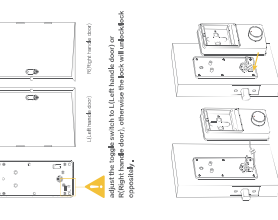
96 Install Batteries & Cover



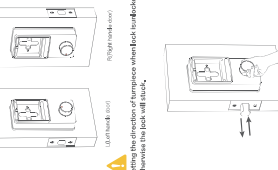
97 Connecting the distance



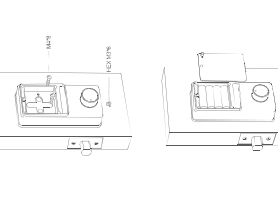
98 Install interior mounting plate



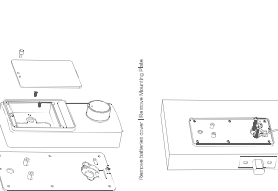
99 Set the direction of turnpiece and Test Operation



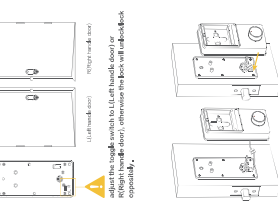
100 Install Batteries & Cover



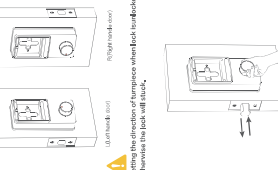
101 Connecting the distance



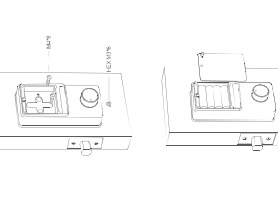
102 Install interior mounting plate



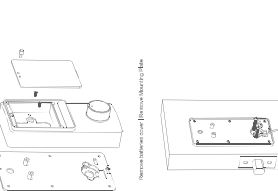
103 Set the direction of turnpiece and Test Operation



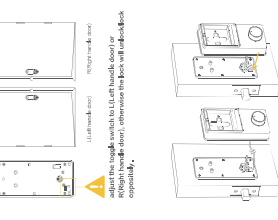
104 Install Batteries & Cover



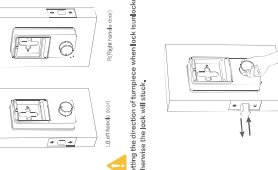
105 Connecting the distance



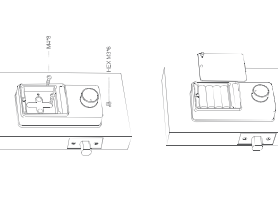
106 Install interior mounting plate



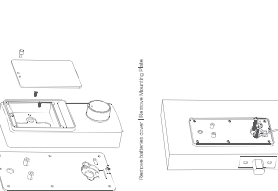
107 Set the direction of turnpiece and Test Operation



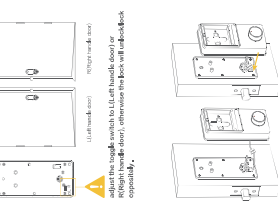
108 Install Batteries & Cover



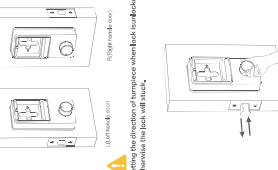
109 Connecting the distance



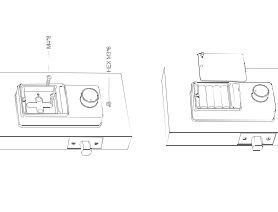
110 Install interior mounting plate



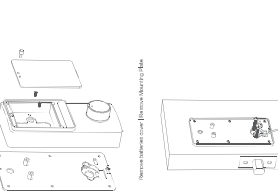
111 Set the direction of turnpiece and Test Operation



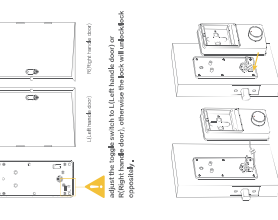
112 Install Batteries & Cover



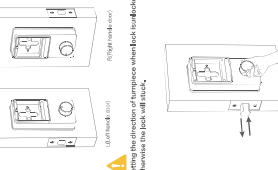
113 Connecting the distance



114 Install interior mounting plate



115 Set the direction of turnpiece and Test Operation



This device complies with part 15 of the FCC Rules. Operation is subject to the following two conditions: (1) This device may not cause harmful interference, and (2) this device must accept any interference received, including interference that may cause undesired operation.

Any Changes or modifications not expressly approved by the party responsible for compliance could void the user's authority to operate the equipment.

Note: This equipment has been tested and found to comply with the limits for a Class B digital device, pursuant to part 15 of the FCC Rules. These limits are designed to provide reasonable protection against harmful interference in a residential installation. This equipment generates uses and can radiate radio frequency energy and, if not installed and used in accordance with the instructions, may cause harmful interference to radio communications. However, there is no guarantee that interference will not occur in a particular installation. If this equipment does cause harmful interference to radio or television reception, which can be determined by turning the equipment off and on, the user is encouraged to try to correct the interference by one or more of the following measures:

- Reorient or relocate the receiving antenna.
- Increase the separation between the equipment and receiver.
- Connect the equipment into an outlet on a circuit different from that to which the receiver is connected.
- Consult the dealer or an experienced radio/TV technician for help.