

### Bluetooth APP

1. Three ways to download the app
- 1). Scan the QR code(here or on the back of the Mini Controller)



- 2). Use iPhone to search for "duoCo StripX" in the AppStore

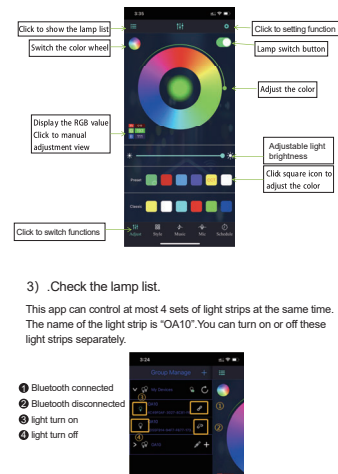


- 3). Use your phone to search for "duoCo StripX" in Google Play



### 2. Bluetooth connection steps

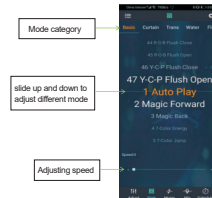
- 1). Turn on Bluetooth, and make sure that your phone's Bluetooth allows this app to be used.
- 2). Open the APP "duoCo StripX", wait for a few seconds, the light strip will automatically connect to the app.



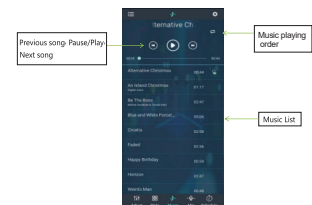
- 4) . Set your favourite colour parameters of RED/ GREEN/BLUE



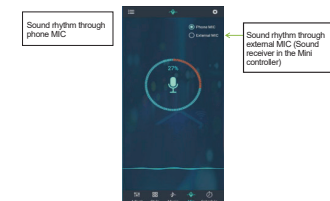
- 5) . Pattern



- 6) . Music mode



- 7) . Switch to the sound rhythm interface



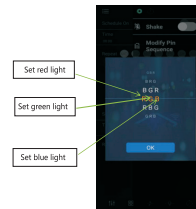
- 8) . Timing mode

Before using the timing function, please make sure that the light strip is always powered on.

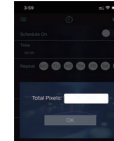


- 9) . Switch to the setting interface

The app comes with the correct pin sequence. Please DO NOT modify it. The wrong Pin Sequence setting will cause the red, green, blue and all the lights to be confused.



The app comes with the correct pixels. Please DO NOT change it. If you accidentally change it, and then make sure the number you fill in is greater than 100.



### The way to download local music

1. Download local music on Android phone :

- (1) Android phone use music players to download songs or copy songs from computers to mobile phones.
- (2) Restart "duoCo StripX" APP. Switch to "music" interface, and you can see the newly imported music files.

2. Download local music on iPhone :

- (1) Install "iTunes" software on your computer;
- (2) Log in iTunes with the same Apple ID account on the iPhone;
- (3) Use iTunes to import downloaded music files on your computer;
- (4) The imported music files will be synchronized to the iPhone in real time
- (5) Restart "duoCo StripX" APP. Switch to "music" interface, and you can see the newly imported music files.

### Attention

1. Only one mobile phone can be connected to the light strip at a time. If you want to switch to another phone, make sure that the previous Bluetooth connection is disconnected.
2. Please use the product in a dry environment.
3. Please make sure that the voltage is 5V, otherwise the lamp beads will be burnt out.

This device complies with part 15 of the FCC Rules. Operation is subject to the following two conditions: (1) this device may not cause harmful interference, and (2) this device must accept any interference received, including interference that may cause undesired operation.

Any changes or modifications not expressly approved by the party responsible for compliance could void the user's authority to operate the equipment.

NOTE: This equipment has been tested and found to comply with the limits for a Class B digital device, pursuant to Part 15 of the FCC Rules. These limits are designed to provide reasonable protection against harmful interference in a residential installation. This equipment generates, uses and can radiate radio frequency energy and, if not installed and used in accordance with the instructions, may cause harmful interference to radio communications. However, there is no guarantee that interference will not occur in a particular installation.

If this equipment does cause harmful interference to radio or television reception, which can be determined by turning the equipment off and on, the user is encouraged to try to correct the interference by one or more of the following measures:

- Reorient or relocate the receiving antenna.
- Increase the separation between the equipment and receiver.
- Connect the equipment into an outlet on a circuit different from that to which the receiver is connected.
- Consult the dealer or an experienced radio/TV technician for help.

The device has been evaluated to meet general RF exposure requirement. The device can be used in portable exposure condition without restriction