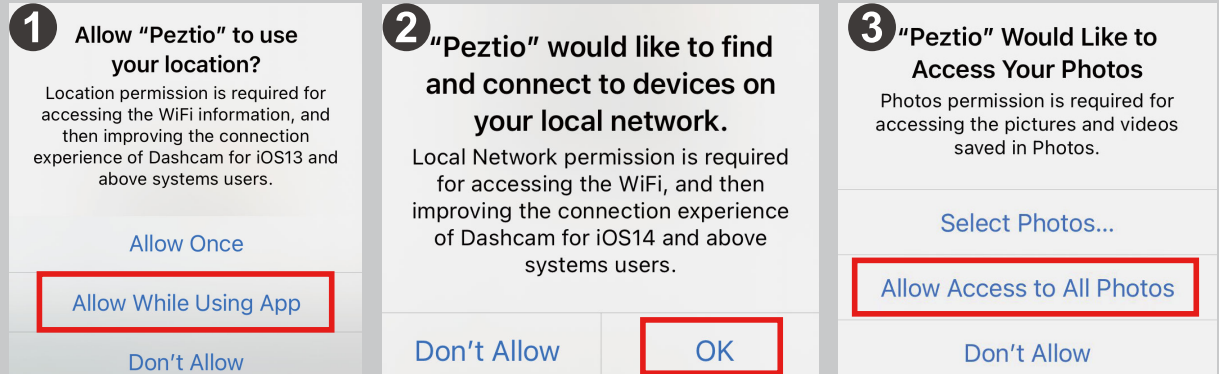


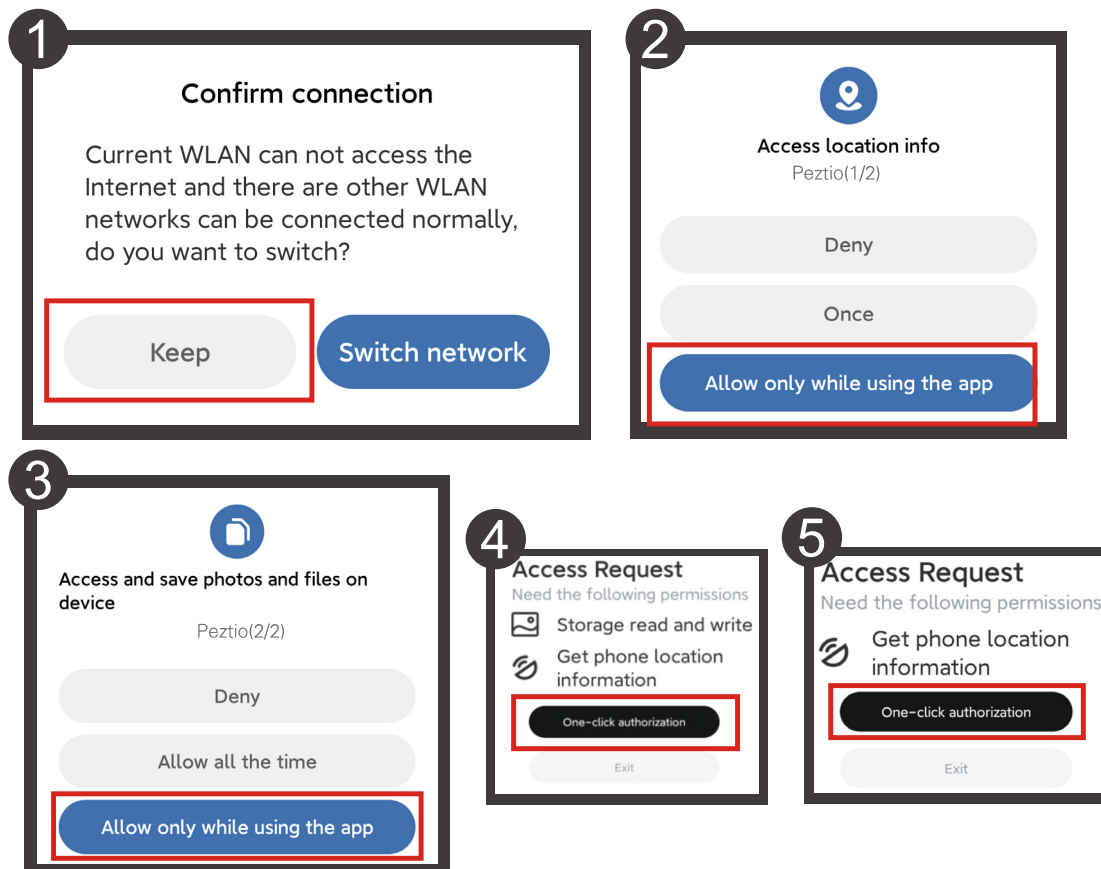
Reminder for iOS Users

If you get these notification windows while using the APP, ensure you choose "Allow" or "OK"



Reminder for Android Users

Please choose "Keep", "Allow" or "Authorization" when these prompts appear.

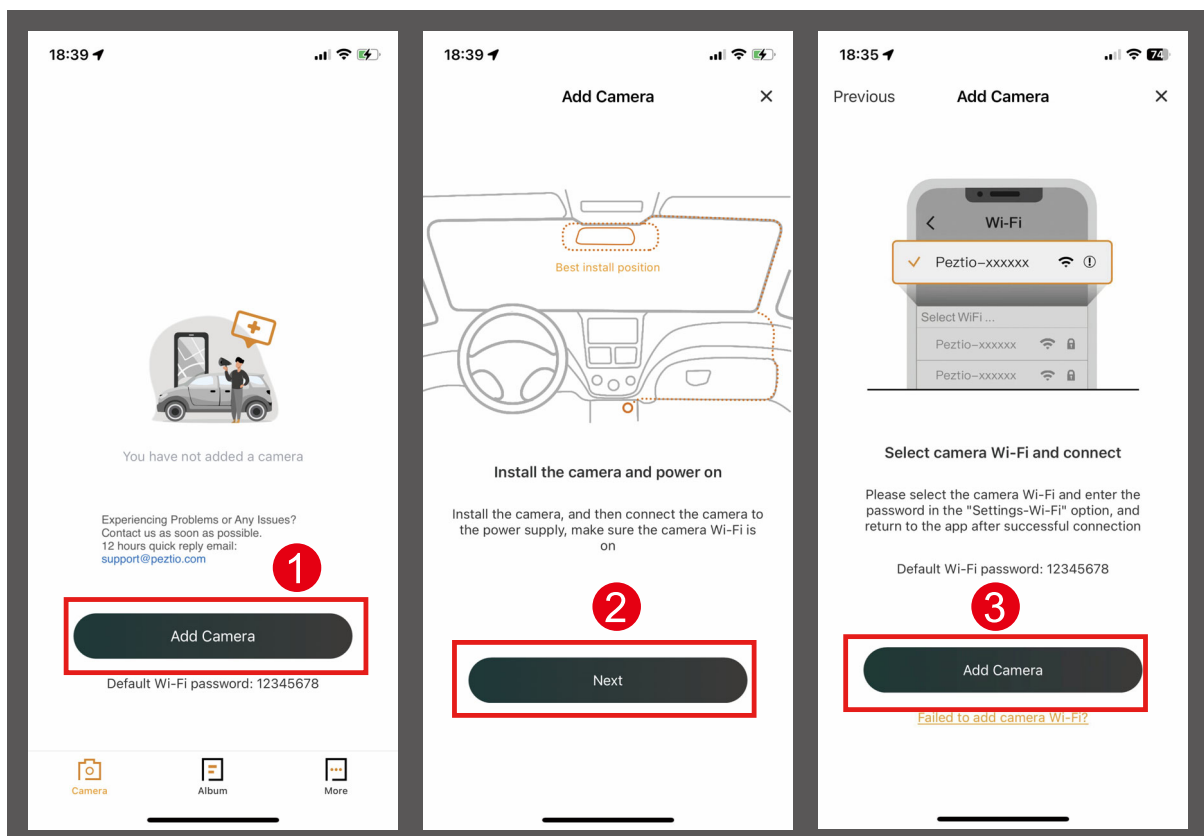


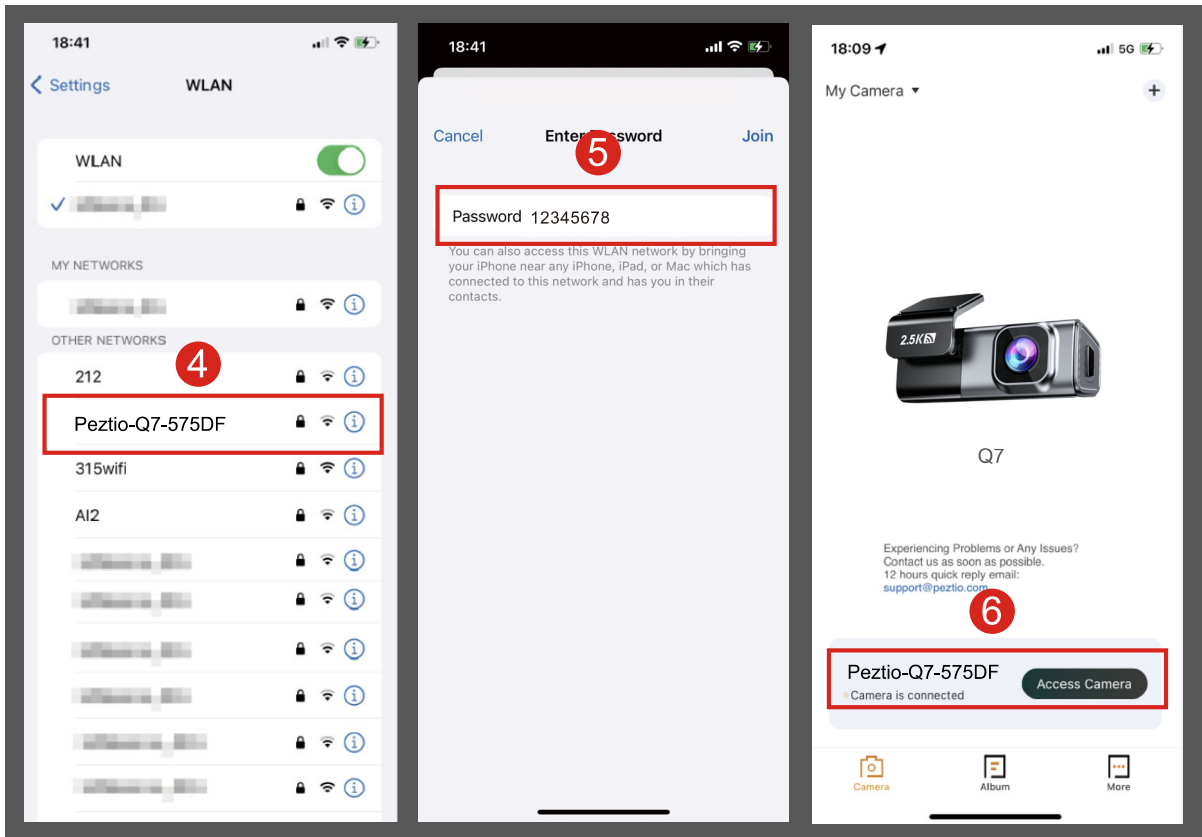
CONNECT TO APP

Connect to the WiFi

3

- When you successfully turn on the app, just simply press
'Add Camera' > 'Next' > 'Add Camera'
1 **2** **3**
- Then it will jump to the WiFi setting of your cellphone. Simply join the WiFi of Q7 dashcam by going into your iPhone or Android
Settings > WiFi > **Peztio-Q7-******
4
- Then enter the default password: **12345678**. And join the network.
5
- Press 'Access Camera' to enter the live video of Q7 dashcam
6





Keep Trying Wi-Fi

Once you connect to Peztio-Q7-**** Wi-Fi, it will say 'No internet connection', which is fine and please select 'Keep trying wifi'. If you want to use the phone network, just disconnect the camera Wi-Fi. The camera will continue to record even when there is no Wi-Fi connected.

The Wi-Fi network "Peztio-Q7-5dfc" does not appear to be connected to the Internet

Do you want to temporarily use cellular data?

Use Cellular Data

Keep Trying Wi-Fi



Disconnecting issue for Carplay / Android Auto users:

This is because by default, the mobile phone prioritizes the connection with Carplay or Android Auto, making it challenging to establish a connection with the camera. To successfully connect the camera, please follow these steps:

1. Disable your mobile phone's Bluetooth.
2. Disconnect from any existing WiFi connections.
3. Turn off your car and ensure your mobile phone is no longer linked to Carplay or Android Auto.
4. Restart your car and then connect the camera with your phone.

Generally, it's advisable to maintain the priority connection with Carplay or Android Auto. The dash cam will continue recording automatically without needing to connect to your cellphone's WiFi, functioning as long as it has a power source.

Start to Use App Functions

4

Once your cellphone successfully join the WiFi hotspot of Q7 dashcam, please simply get back to the 'Peztio' App, then the app will take seconds to identify your dashcam information and get it finished, once it is finished, you will see your dash cam name and able to click 'Access Camera' to start data transfer with your camera.



WATCH GUIDE VIDEO

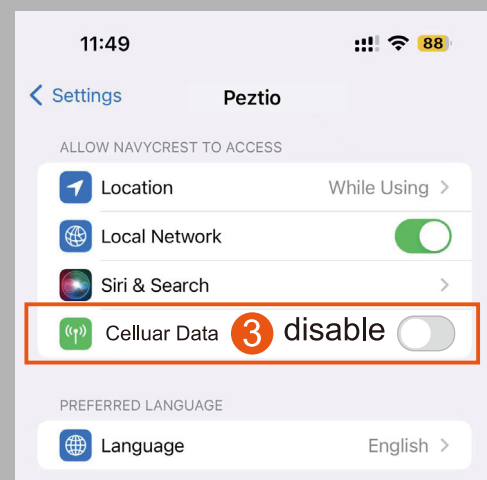
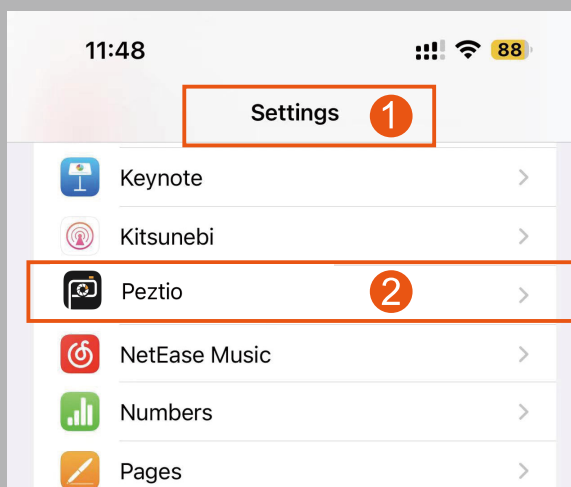
Please scan the code to watch the Q7 Dashcam WiFi connection video(will redirect to YouTube)



CAN'T SEE PREVIEW VIDEO?

The cellular data may cause the live feed not to be viewed. Please following the steps below to get it fixed

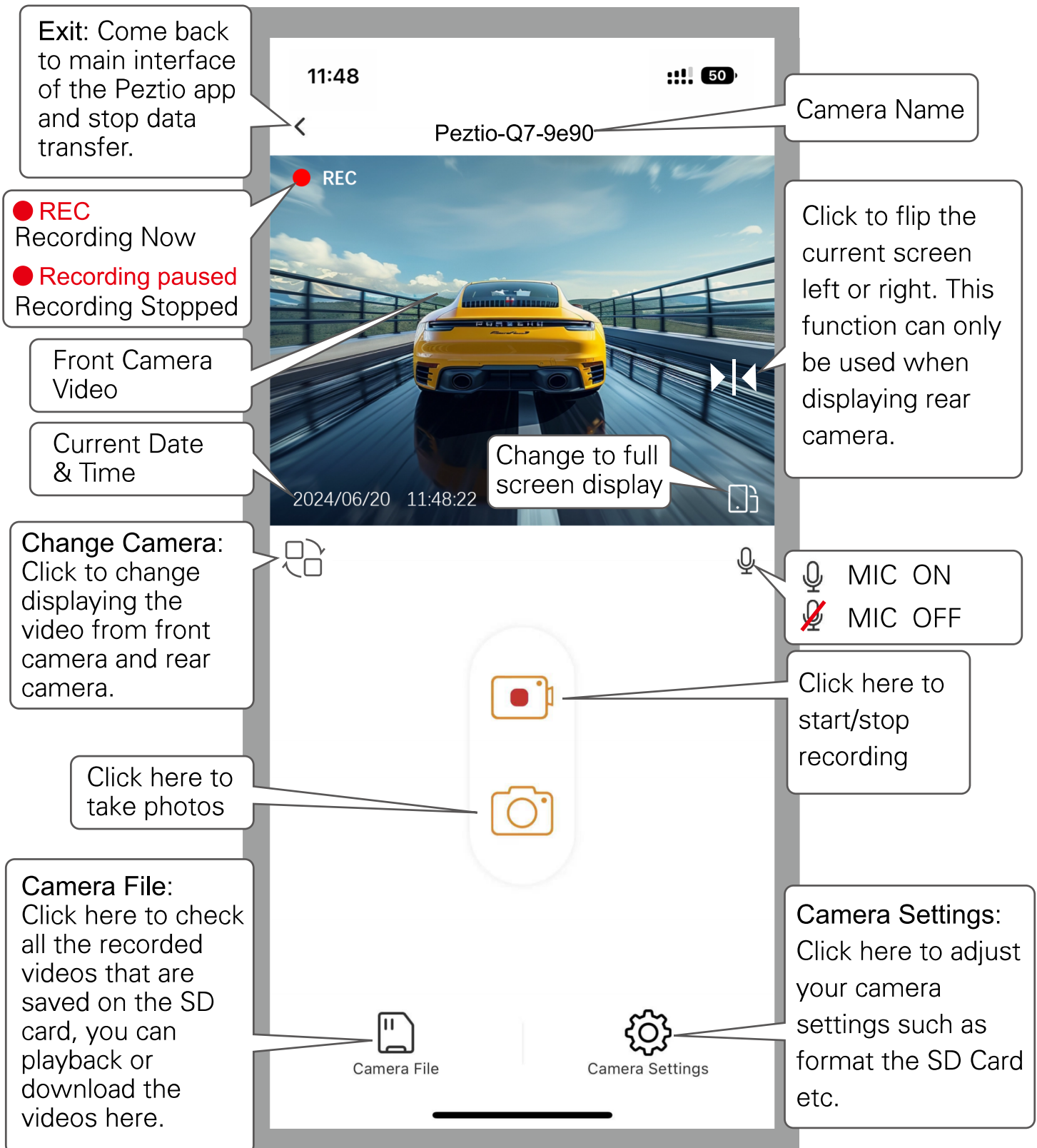
1. Go to the 'settings for your iphone'
2. scroll down until you find out the 'peztio'
3. click in peztio and disable the cellular data options



APP INTRODUCTION

Live Video Interface

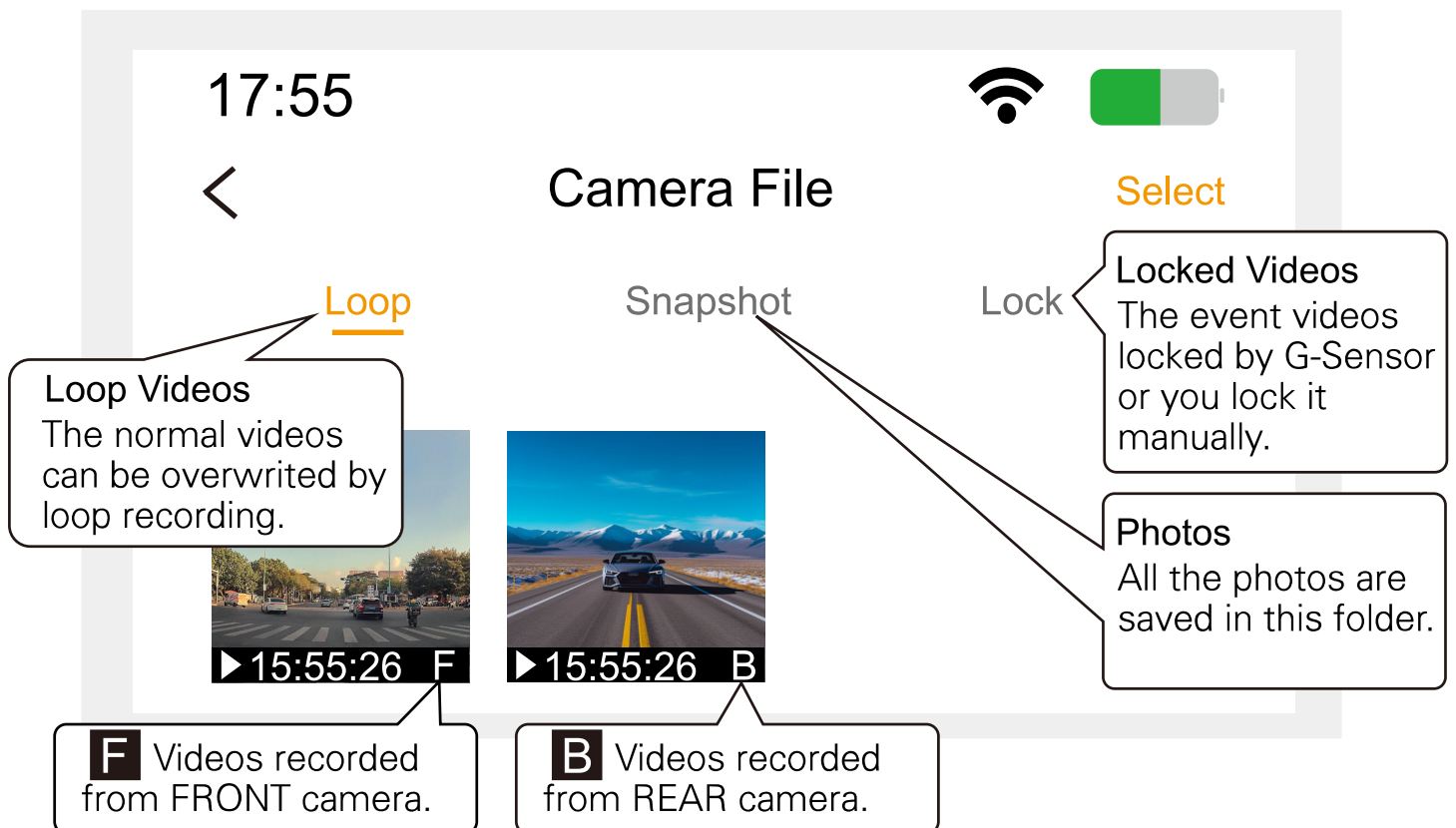
1



Camera File Interface

2

By clicking the 'Camera File' from the last interface, you can playback and download the videos the Q7 dashcam recorded. **Please note that different videos are saved in the different folders, if you want to check the accident videos or the video you locked, please click the 'lock' folder to check.**



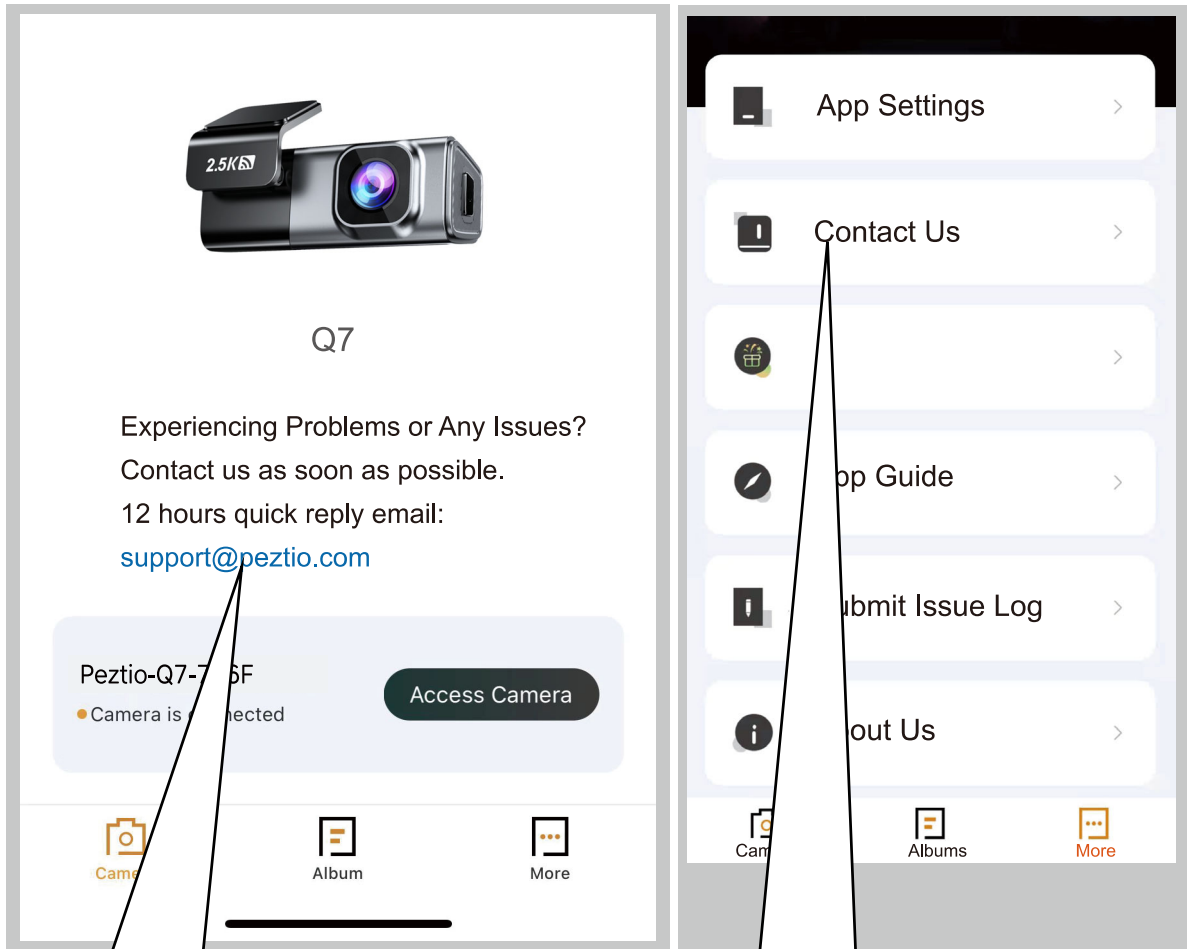
FOR YOUR BEST EXPERIENCE

- (1) Please download the videos if you need a more detailed and smoothly video, the preview resolution is at only 480P. For a real 2.5K front video experience, please use a monitor that support 2.5K resolution.
- (2) The downloaded videos / photos will be saved in your local albums.

Get in Touch with Our Support From the App

3

If you have any issues or need from our after-sale support, there are 2 ways for you to get in touch with us in 'Peztio' app. Typically we will reply to you in 24 hours on working days!

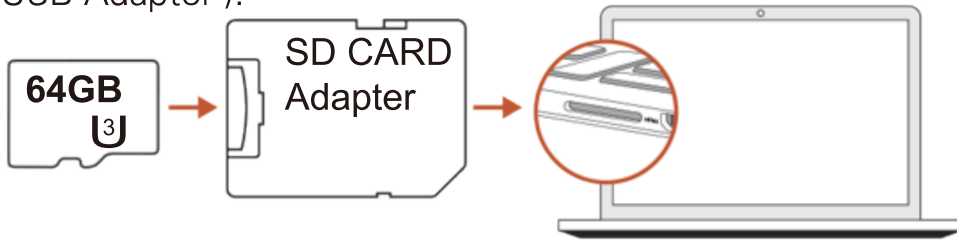


You can click this email address from the main interface of 'Peztio' app, then it will jump to the email app of your cellphone.

You can also click the 'Contact us' from the 'More' page. Then it will jump to the email app of your cellphone.

PLAYBACK VIDEOS

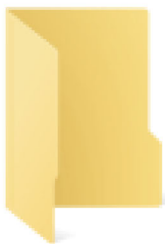
- 1 Besides playback videos from cellphone app. you can remove the SD card from Q7 dashcam and insert it to computer directly (if your computer doesn't have memory slot, then you need to purchase a 'Micro SD Card to USB Adapter').



- 2 After you insert the SD card to your computer, please look for the added flash drive. You should be able to see drive named 'CarDVR-Q7'



- 3 When you locate the added flash drive 'CarDVR-Q7', double click in it, then you will see 4 folders named 'video_front', 'video_front_lock', 'video_back' and 'video_back_lock'.



video_front



video_front_lock



video_back



video_back_lock

video_front=normal video from front camera

video_front_lock= locked video from front camera

video_back=normal video from rear camera

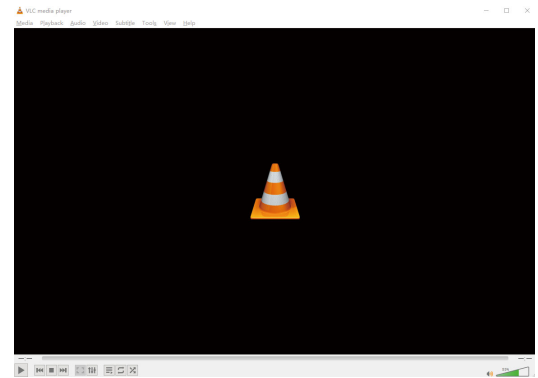
video_back_lock= locked video from rear camera

CAMERA SETTINGS ON APP



Use VLC Player to Play

The video format of Q7 dashcam maybe not supported by your computer original video player. We strongly recommend you download a VLC Player to play the videos. You can get it free at www.videolan.org



CAMERA SETTINGS ON PEZTIO APP

Video

1

Sound Recording

The Q7 dashcam supports voice recording, you can activate it on camera settings to record the voice or turn it off to prevent the voice from being recorded.

- On (Default)
- Off

Video Resolution

Choose the resolution of the front lens you want according to your needs. The higher the resolution, the more storage space the video will take up.

- 2.5K (Default)
- 1080P

Anti Flicker

Here you should choose the frequency accordingly to your power supply specification used in your country based on your geographical location.

- 60 Hz (Default)
- 50 Hz

Speaker Volume

This feature allows you to adjust the volume of the speaker, and if you feel the volume of the speaker is too loud, you can turn it down or turn it off.

Voice contents:

- | | |
|------------------------------|------------------------------|
| 🔊) Factory default success | 🔊) Please insert the SD card |
| 🔊) Formatting is completed | 🔊) Start recording |
| 🔊) Mute off | 🔊) Start time-lapse video |
| 🔊) Mute on | 🔊) Stop recording |
| 🔊) Picture success | 🔊) Video locked |
| 🔊) Please format the SD card | |

OPTIONS:

- | | | |
|--------|-----------|-------------------|
| ● Mute | ● Low | ● Middle(default) |
| ● High | ● Highest | |

Loop Record Options

The duration of each recorded video will be saved in the normal video folder according to the loop recording time you set. When the capacity of the normal video folder reaches 70% of the total, new loop recording files will automatically overwrite original loop recording files. After this function is enabled, the video file will automatically overwrite the loop, so as not to stop recording during the driving process.

- 1 minute (Default)
- 2 minutes
- 3 minutes
- 5 minutes



This function can free you from deleting the video manually once the SD card is full. This function may fail when you inserted a low-speed card into the dash cam, please insert a Class 10 U3 speed Micro SD card (not larger than 256GB) to make sure this function can work properly.

CAMERA SETTINGS ON APP

Time Stamp

You can choose whether to put the date watermark on the video.

- Off
- Date and Time (Default)

24-Hour Time

To choose the time format which is displayed on the Q7 camera screen.

- On (DEFAULT)
- Off (use 12-Hour Time format)

Advanced

2

Collision Sensing

G-Sensor is a 3-axis impact gravitational accelerometer which is designed to detect physical and gravitational forces on the camera.

While Video is Being Recorded: In the event when G-Sensor is triggered due to physical or gravitational impact force on the camera, the current loop cycle length of video file will be locked so it will NOT be deleted by loop cycle function.

- Off
- Low (DEFAULT)
- Medium
- High

Screen Saver Settings

If you don't operate the camera for a period of the preset time, the screen will auto-off but the recording will go on. You can also turn on this function if you don't want the screen disturb you from driving.

- Off (Screen Always On)
- After 10 seconds
- After 30 seconds
- After 1 minutes

Parking Mode(Hardwire Kit Required)**3****TYPE C HARDWIRE KIT REQUIRED**

This feature becomes accessible within camera settings only when the camera is powered by the hardwire kit. To enable this function, you'll require a Type C hardwire kit, available for separate purchase at

<https://www.amazon.com/dp/B0BN829V8D>

Alternatively, you can contact us to obtain a free hardwire kit for connecting to the Q7 by joining the promotion.

Parking Monitor

This functionality is specifically intended for use when your vehicle is parked. Once you've installed the dedicated hardwire kit and established the connection, you can activate the parking mode via the Peztio app. While your car is parked, if the camera detects a collision, it will activate automatically, record for one minute, and then deactivate. The resulting video will be safeguarded as an emergency file, preventing it from being overwritten by the loop recording feature.

- Off (DEFAULT)
- Low
- Middle
- High



This function requires a hardwire. Meanwhile, it is triggered by the gravity sensor you preset in this option, please set it low / middle / high before you want to get this function to work. Q7 dash cam will execute the time-lapse records as a priority for the situation when you turn on the time-lapse record and parking monitor at the same time.

CAMERA SETTINGS ON APP

24-HR Auto Parking Mode

This feature is designed to work while your car is parked. After installation of dedicated hardwire kit and connected, you can turn this function on. When you turn off your car, the camera will record LOW FPS video until you turn on the car again. It's extremely saving power and capacity as the normal video is 30 frames per second while this time-lapse is on.

- Off (DEFAULT)
- Time Lapse Recording (Recommend)



When the timelapse recording got activated, the camera will give you voice alert stating "start timelapse video" when you turn off your car.

Parking Mode Duration

You can set a duration for the time lapse recording(when you set it on), when the time is out, the camera will power off and go to parking monitor mode(when it detects a collision, the dash cam will power on again and record a 1 min video)

- Off (default, the dash cam will stay on parking mode till you start the car again)
- 12 hours
- 24 hours
- 48 hours

Genral

4



Wi-Fi Name

This feature will allow you to change WiFi name from the camera so you can set a favorite WiFi name.

Default WiFi Name
Peztio-Q7-****

Wi-Fi Password

Here you can change the WiFi password as your preference.

Default password: **12345678**


Format

This feature will allow you to format inserted memory card, all the data will be deleted. Please backup the important videos before formatting.

Factory Reset

Here you can restore all the settings to factory default settings.



You can also long press  for 6-7s to restore all the setting to factory default instead of operating from app.

SPECIFICATIONS

Screen	0.96 Inch IPS Screen
G-sensor	Built-in
WiFi	Built-in 5GHz/2.4GHz Dual Mode WiFi
Resolution	1440P-2.5K Front / 1080P Rear 1080P Front / 1080P Rear
Sensor	6 glass, 170 Degree Wide Angel Lens
Language	English, German, Japanese, etc
Video Format	.ts
Picture Format	JPEG
Power interface	5V/2A
Working Temperature	Working temperature -4°F to 167°F (-20 C to 75°C).

Frequently Asked Question

1 Can't View Live video on Peztio App?

The cellular data will cause the live feed not to be viewed. Please disable the "Peztio" cellular data of your cellphone.

Setting → Peztio → Disable the "Cellular Data"

2 Do I have to connect the Q7 dashcam WiFi each time I drive in order to record the videos?

No, the dash cam will automatically record without connecting to your cellphone wifi. Camera will record as long as it has power.

3 Encountering issues connecting the camera while using Carplay/Android Auto?

This is because by default, the mobile phone prioritizes the connection with Carplay or Android Auto, making it challenging to establish a connection with the camera. To successfully connect the camera, please follow these steps:

1. Disable your mobile phone's Bluetooth.
2. Disconnect from any existing WiFi connections.
3. Turn off your car and ensure your mobile phone is no longer linked to Carplay or Android Auto.
4. Restart your car and then connect the camera with your phone.

Generally, it's advisable to maintain the priority connection with Carplay or Android Auto. The dash cam will continue recording automatically without needing to connect to your cellphone's WiFi, functioning as long as it has a power source.

4 How to use the parking mode function?

To enable the 24 hours parking monitoring function on the Q7 dashcam, you will require a Type C hardwire kit (NOT included in the package). You can find the recommended kit on Amazon by searching for . If you prefer to get the FREE hardwire kit from us by joining the promotion, please feel free to reach out to us via WhatsApp or email.

5 The camera does not power off even when the car is off and drains my battery?

This issue happens when your car does not cut the power supply after you shut down the car (while other models do). So we recommend you replace the dashcam charger with another port from your car that can cut the power after your key is off. **If there is no ideal port from your car, please contact us for a hardwire kit as this kit can cut the power to the dash cam when it detects the battery voltage drop and retain enough power for the next start.**

8 Not Showing rear video?

If the rear video is not shown on the display even if you have inserted the plug of the rear camera into the main camera, please push the plug into the socket harder as this problem is caused by the incomplete insertion of the rear plug. If you are sure the plug is firmly inserted in to the main camera and the issue is still, please contact us immediately.

7 Loop recording doesn't work.

- (1) Please check your SD card version, this loop recording function requires a Class 10, U3 SD card within 256GB, otherwise your videos can't be saved or overwrite.
- (2) Make sure your loop recording is on and format your SD card, then set the G-Sensor at low sensitivity, your SD card may have too much locked videos and loop recording can't overwrite with these videos.

6 Missing Parts / Need accessories from us.

You may need accessories from us while using the Q7 dashcam or you may encounter missing part issue after you receive the package, don't worry, just email us or chat with our Whatapp, we will send them to you.

9 The video playback on Peztio APP is blurry.

Due to the limitation of WiFi transmission rate, the videos you watch is only 480P if you don't download the files. So we suggest you download the videos to your phone and watch them in local album. The downloaded front video resolution can be up to 2.5K.

10 Can't use navigation / listen music with online app while driving?

Once you connect to Peztio-Q7-**** WiFi, it will say 'No internet connection', which is fine and please select 'Keep trying wifi'. If you want to use the phone network,(for music, navigation etc.) just disconnect the camera WiFi. **The camera will continue to record even when it is not connected to your cellphone. In other words, you don't need to connect to the dash cam WiFi all the time.**

11 Unresolve Issues?

If you encounter any unresolve issue while using our Q7 dashcam, please contact us as soon as possible following the contacts below:

OUR EMAIL ADDRESS:
help@navycrest.net

OUR WhatsApp
Scan the code with your
WhatsApp and chat with
our support right now!



Sincere Thanks

Dear customer,

Thanks for choosing our Navycrest dashcam. As you are the most valuable customer of us, we provide 12 months warranty & life time customer care for you. **Please register your product on our website (following the steps below)** and we will provide the warranty service and customer care for you.

If you have any problem about our dash cam, please contact us via the email or whatsapp. Typically we will reply in 24 hours and we will try our best to help, thank you!

Sincerely,

Navycrest

REGIST YOUR 12 MONTH WARRANTY (CUSTOMER CARE)



REGISTER WITHIN THE FIRST 30 DAYS

Scan this QR Code Using your iPhone or Andriod's Camera to start your Product Registration.

Or visit the link using mobile or PC/MAC:
peztio.com/apps/product-registration



CUSTOMER SUPPORT

help@navycrest.net



Scan to download the 'Peztio' APP

FCC WARNING

This device complies with part 15 of the FCC Rules. Operation is subject to the following two conditions: (1) this device may not cause harmful interference, and (2) this device must accept any interference received, including interference that may cause undesired operation.

Any changes or modifications not expressly approved by the party responsible for compliance could void the user's authority to operate the equipment.

NOTE: This equipment has been tested and found to comply with the limits for a Class B digital device, pursuant to Part 15 of the FCC Rules. These limits are designed to provide reasonable protection against harmful interference in a residential installation. This equipment generates, uses and can radiate radio frequency energy and, if not installed and used in accordance with the instructions, may cause harmful interference to radio communications. However, there is no guarantee that interference will not occur in a particular installation. If this equipment does cause harmful interference to radio or television reception, which can be determined by turning the equipment off and on, the user is encouraged to try to correct the interference by one or more of the following measures:

- Reorient or relocate the receiving antenna.
- Increase the separation between the equipment and receiver.
- Connect the equipment into an outlet on a circuit different from that to which the receiver is connected.
- Consult the dealer or an experienced radio/TV technician for help.

To maintain compliance with FCC's RF Exposure guidelines, This equipment should be installed and operated with minimum 20cm distance between the radiator and your body: Use only the supplied antenna.