

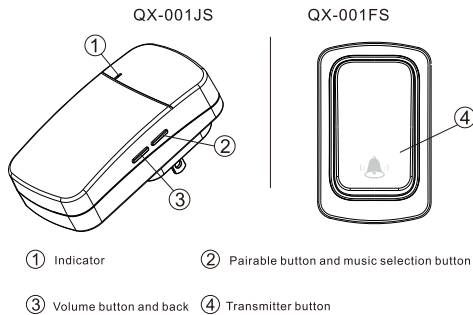
QX-001 Battery-free wireless doorbe

Product Description:

1. Product Features:

Battery-free wireless doorbell, driving wireless signal by pressing power generation, no battery, no wiring, simple installation, green and environmental protection, the appearance is minimalist design, simple and generous, and the shape is round and beautiful. QX-001FS can be used with receiving devices such as wireless receivers/smart switches for remote control of electrical equipment, which can easily realize single control, dual control, multiple control and mutual control. It is not only an application doorbell, but also can be used in various fields such as switches and pagers.

2. Product diagram:



3. Technical parameter

QX-001 Technical parameter:

Technical parameter	Doorbell transmitter	Doorbell receiver
Power supply	self-powered generation	AC100V-230V 50/60Hz
Power consumption		0.25W
Music		38 Melodies
Weight	52g	54g-59g
Distance of transmission	Operating range(No obstacles)≥150M	
Working frequency	433MHZ	
Appearance dimension	L80mmxW50mmxH28mm	L95mmxW53mmxH49-70mm
Ringtone volume	≥50dB/1m	
Working temperature	-20℃~+60℃	-10℃~+45℃

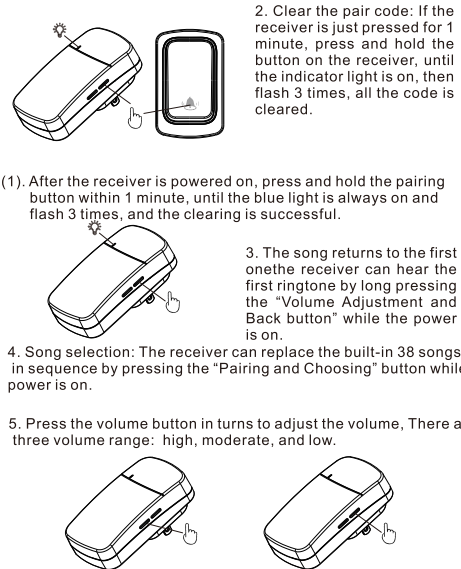
User Instruction

1. Pairing: When the QX-001JS receiver is in the power-on state, the indicator light is always on, then it is in the pairing mode. Press the BM3FS button once, the indicator light flashes and the pairing is successful. Up to 5 transmitters can be matched. You can also pair it yourself as shown below. When the receiver has paired 5 switches and then paired with the new switch, it will automatically replace the first switch.

(1). The receiver has just pressed the pairing button for 3 seconds within 1 minute of power-on.

(2). When the blue light on the receiver is always on, enter the pairing mode.

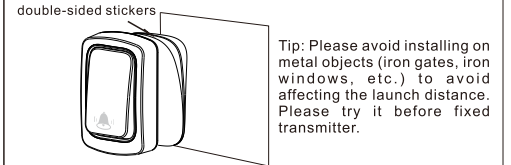
(3). Press the transmitter, the blue light flashes on the receiver, and the pairing is successful.



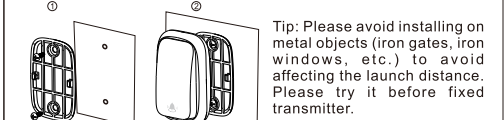
QX-001FS Install Instruction:

The QX-001FS transmitter can be placed or moved at will, or it can be fixed in your favorite position.

1. Method 1 (double-sided stickers): Remove one side of the double-glue sticker and stick it to the bottom of the transmitter, then tear the other side of the double-glue sticker and stick it on the wall or glass. Then the installation completed.



2. Method 2 (screw mounting): ***optional accessories*** As shown, the bottom cover bracket is first screwed to the wall, then slide the transmitter into place.



Fault analysis and troubleshooting

1.No sound:Check whether receiver socket is powered on.

2.Short transmission distance: Some objects, such as iron doors and iron frames, walls or ceilings will affect the efficiency of transmission distance. Please avoid the transmitter and receiver near these objects.

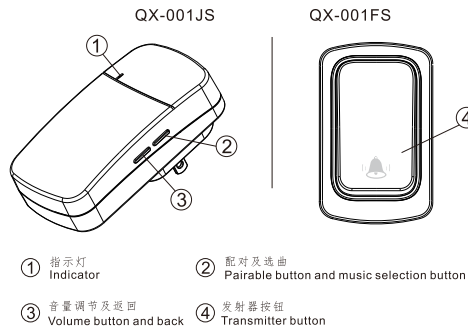
QX-001自发电无线门铃使用说明书

敬告: 使用本产品前, 请仔细阅读产品说明书, 并且按照说明书进行安装和使用。

产品概述:

1. 产品特点: 免电池无线门铃, 通过按压发电来驱动无线信号, 不用电池, 无需布线, 安装简单, 绿色环保, 外观采用极简设计, 简单大方, 外形圆润美观, 处处显高档, QX-001FS它可以与无线接收器/智能开关等接收设备配合使用, 用于遥控用电设备, 可轻松实现单控、双控、多控及互控。它不单是应用门铃, 可用于开关、呼叫器等多种领域。

2. 产品示意图:



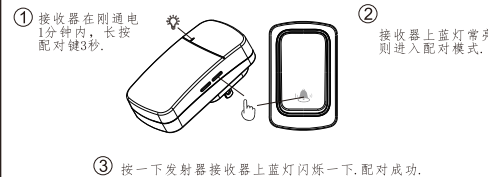
3. 技术参数:

QX-001 技术参数规格

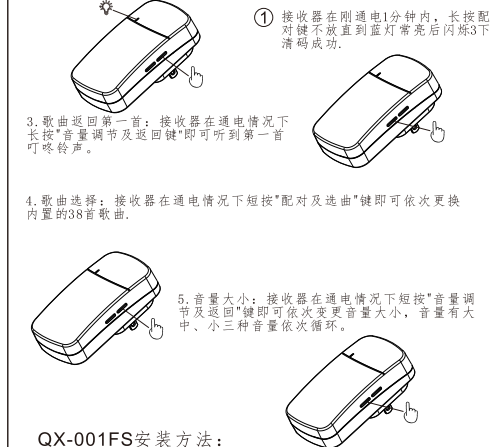
技术参数	门铃发射器	门铃接收器
电源	自发电	AC100V-230V 50/60Hz
功耗		0.25W
铃声		38首铃声
重量	52g	54-59g
传输距离	空旷地>150M	
射频频率	433MHZ	
外观尺寸	L80mmxW50mmxH28mm	L95mmxW53mmxH49-70mm
铃声音量	≥50dB/1m处	
环境温度	-20℃~+60℃	-10℃~+45℃

使用方法:

1. 配对: QX-001JS接收器如是在刚通电状态下, 指示灯为常亮则为处在配对模式(未存任何开关), 按动QX-001FS按键一下指示灯闪一下即配对成功一个, 以此类推最多可配上5个发射器。也可按下图方式自行配对, 当接收器已配上5个开关, 再配新的开关则会自动把第一个开关替换。



2. 清除对码: 如图示接收器在刚通电1分钟内长按接收器上按键不放直到指示灯常亮后闪3下, 即清除掉所有对码。



QX-001FS安装方法:

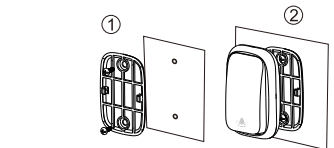
QX-001FS发射器可随意摆放或移动, 也可固定到自己喜欢的位置。固定前请先放在所需固定的位置试用, 不影响正常使用再固定。固定方式如下:

1. 方式1 (双面贴): 如图示: 用双面贴一面贴开关底面, 另一面可随意贴到自己喜欢的地方。



2. 方式2 (螺钉安装):

放在所要固定位试用正常画定定位点再用专业工具在墙上打孔装胶塞用螺丝把支架固定到墙上, 把发射器对准滑动到位即可。



特别提示: 请避免安装在金属物(铁门, 铁窗等)上, 以免影响发射距离。固定前请试用可行与否。

故障分析与排除:

1. 门铃不响: 检查接收器是否插好, 插座是否通电。

2. 传输距离短: 铁门, 铁窗等金属物体会影响有效的传输距离, 避免发射器及接收器放置于金属物体附近。墙壁与天花板也会影响传输的距离。其它无线设备干扰等

FCC Statement

This equipment has been tested and found to comply with the limits for a Class B digital device, pursuant to part 15 of the FCC Rules. These limits are designed to provide reasonable protection against harmful interference in a residential installation. This equipment generates, uses and can radiate radio frequency energy and, if not installed and used in accordance with the instructions, may cause harmful interference to radio communications. However, there is no guarantee that interference will not occur in a particular installation. If this equipment does cause harmful interference to radio or television reception, which can be determined by turning the equipment off and on, the user is encouraged to try to correct the interference by one or more of the following measures:

- Reorient or relocate the receiving antenna.
- Increase the separation between the equipment and receiver.
- Connect the equipment into an outlet on a circuit different from that to which the receiver is connected.
- Consult the dealer or an experienced radio/TV technician for help.

Caution: Any changes or modifications to this device not explicitly approved by manufacturer could void your authority to operate this equipment.

This device complies with part 15 of the FCC Rules. Operation is subject to the following two conditions: (1) This device may not cause harmful interference, and (2) this device must accept any interference received, including interference that may cause undesired operation.

RF Exposure Information

The device has been evaluated to meet general RF exposure requirement. The device can be used in portable exposure condition without restriction.