

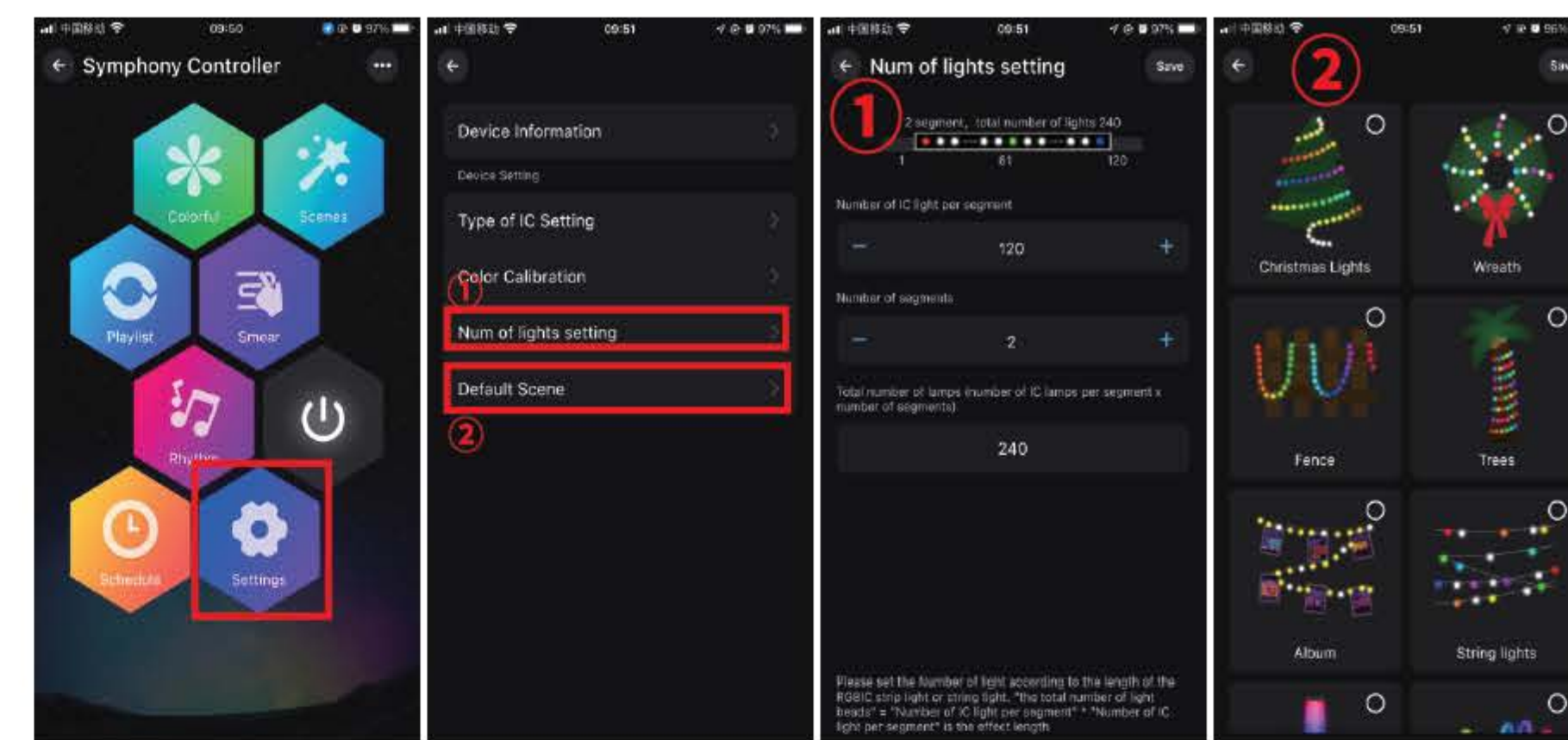
USB Controller



User Manual

1.About Settings:

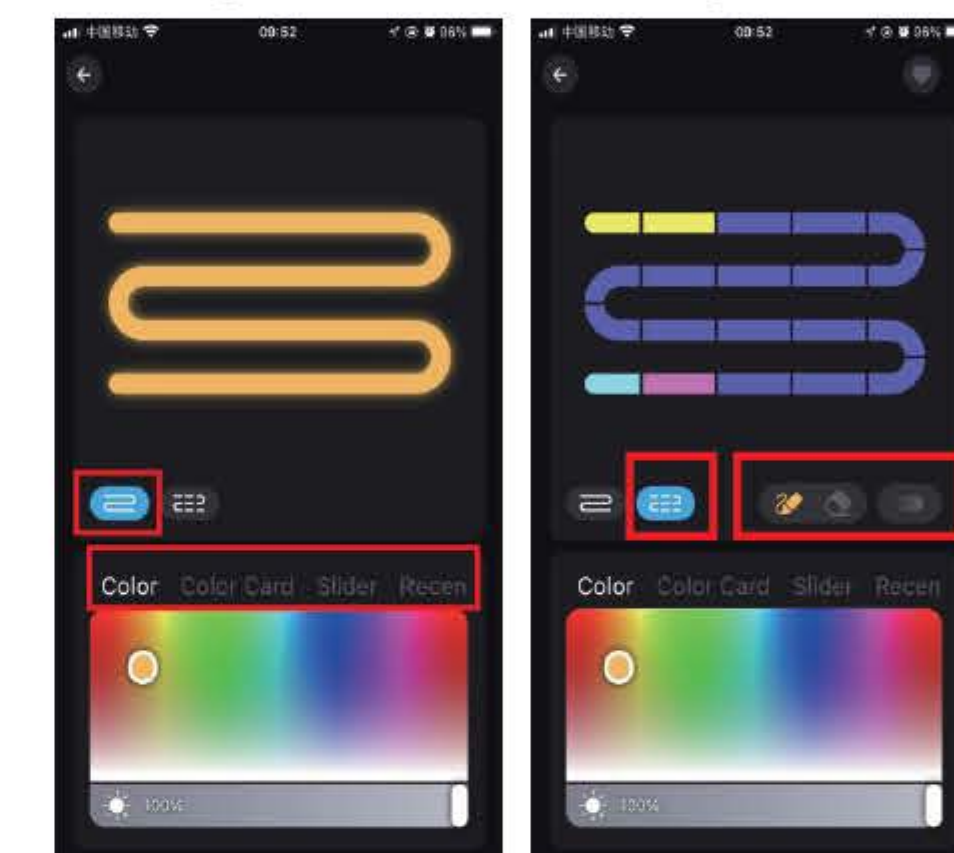
- 1) In the setting interface, you can set the IC model, color correction, number of points(Total number of points can not exceed 300 in each segment and total LED chips quantity can not exceed 2048)
- 2)The setting of IC number is applied to the smearing function



2.Detailed introduction of APP functions:

A) Multi color function

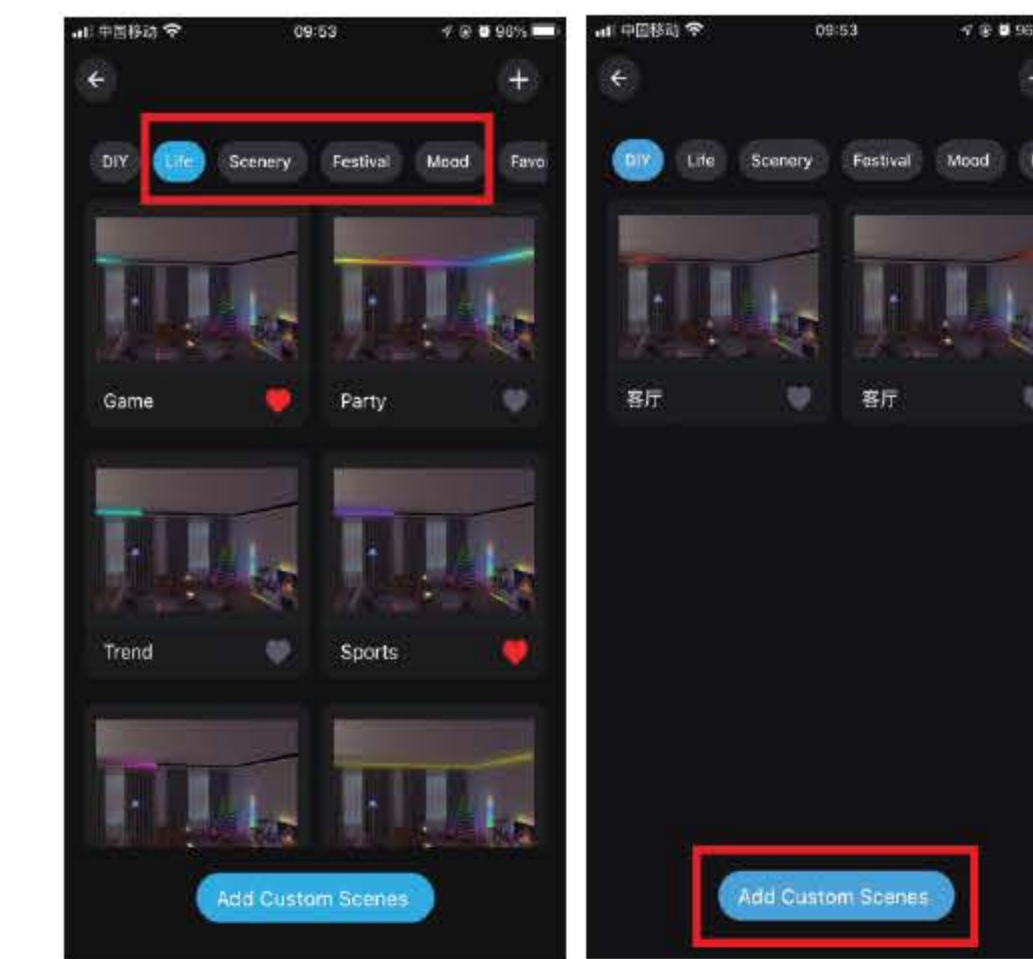
The color of the light can be adjusted by the whole and each segment. App provides different columns for color selection or editing, and the brightness can also be adjusted. In the segmentation interface, users can freely smear or erase the color of each segment, and also set the gradient effect.



- 1 -

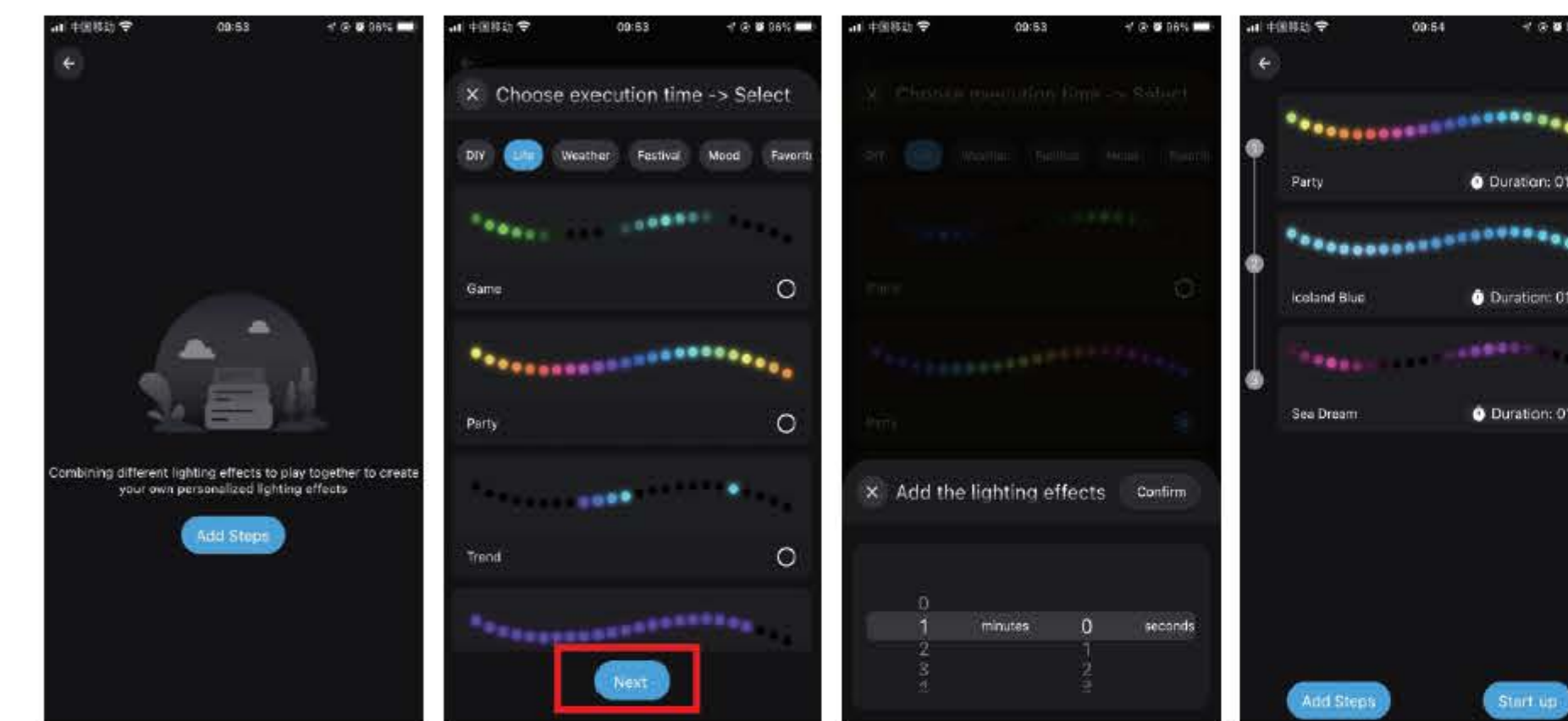
B) Scene settings

There are Four Build-in scenes: "Life", "Scenery", "Festivals", "Mood", and click "DIY" or "Collection" to create your favorite light effect.



C) Playlist mode

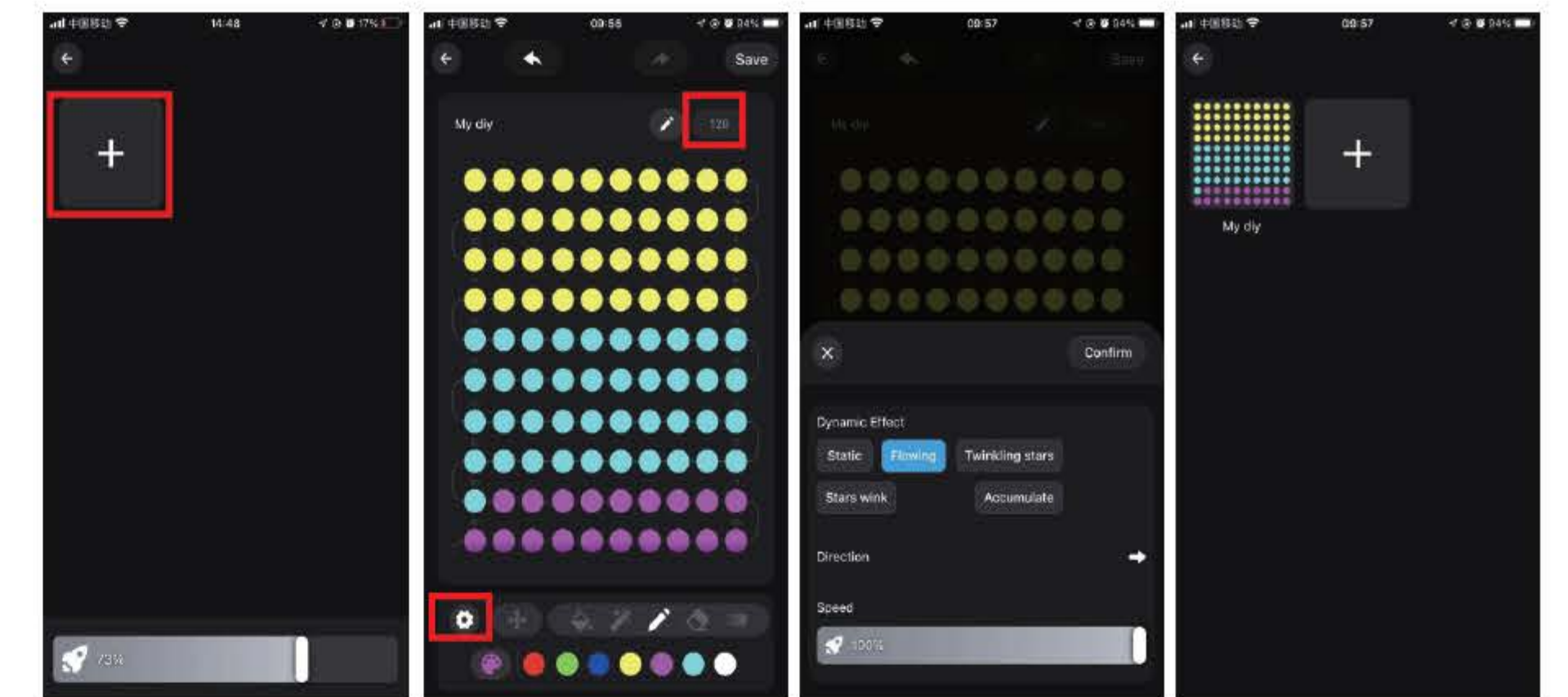
Multiple light dynamic modes built in, can set the time of lighting effects and enter cycle mode. Select different scene modes, then set the duration of each scene respectively, and play it by combining the sequence of different lighting effects.



- 2 -

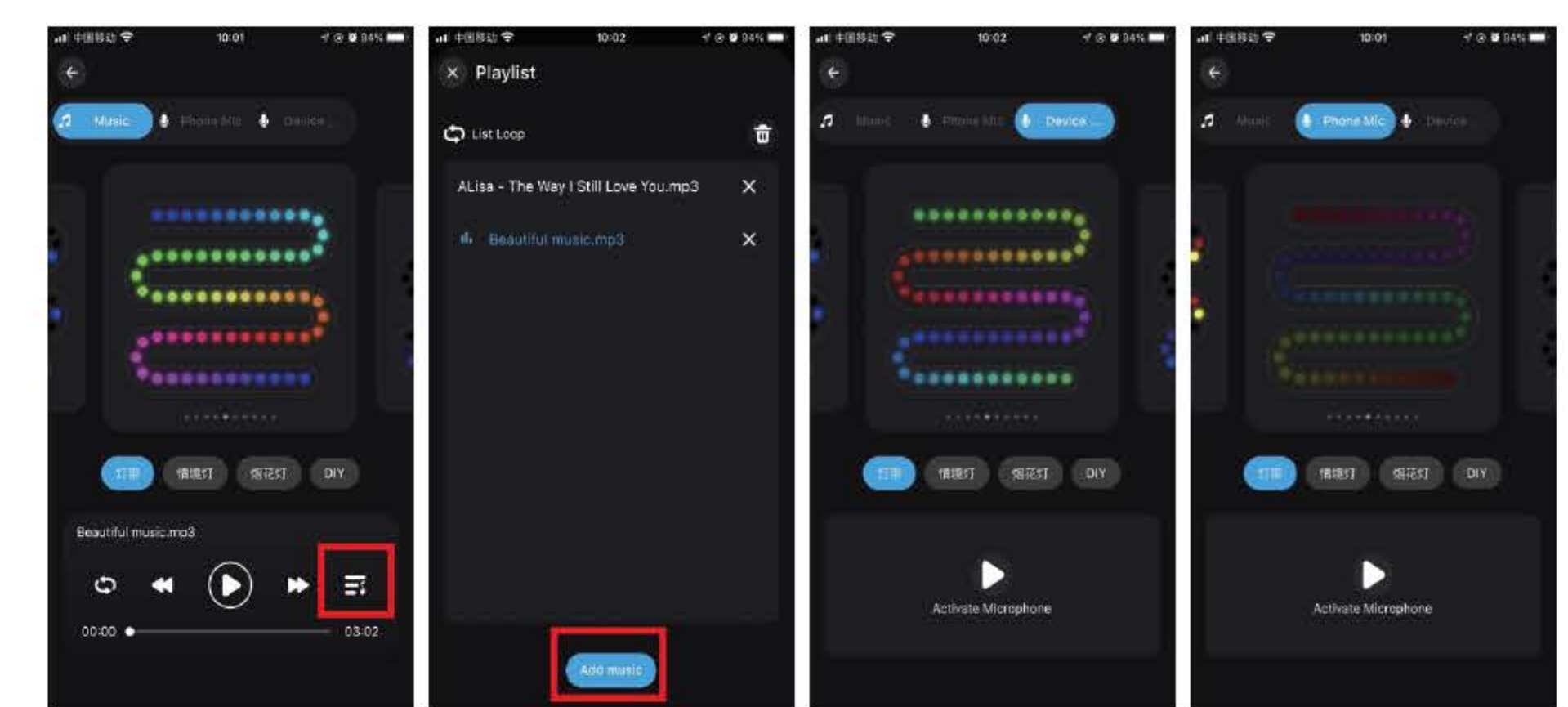
D) Smear function

Click "+" to DIY the lighting color and dynamic effects then save it. Before DIY, please set the number of IC in "Settings" to ensure that the number of lights is consistent with the device, Otherwise, the lighting effect is incorrect. Before customize, please ensure that the IC number in app setting is the same as the light device, otherwise, the lighting effect will be incorrect.



E) Rhythm Mode

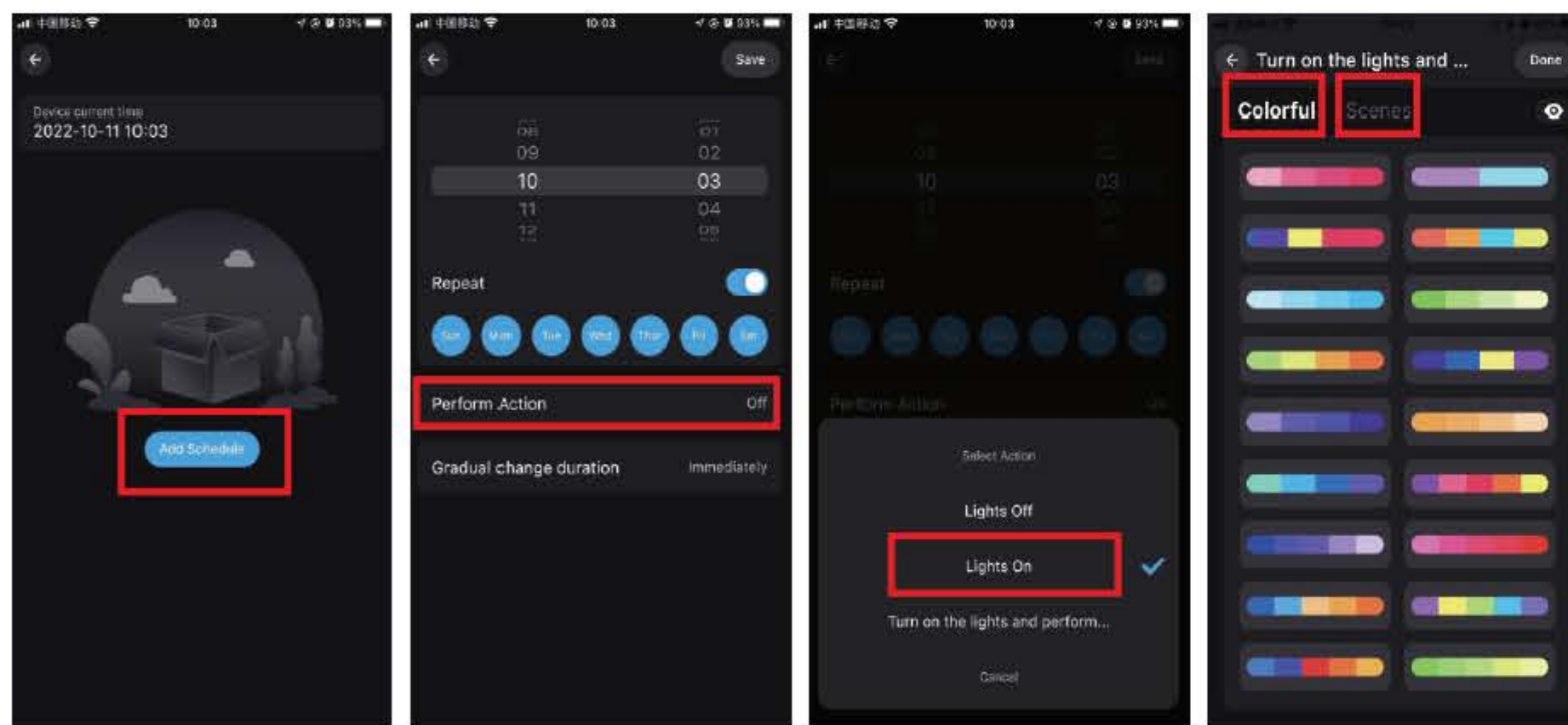
Built-in Three rhythm modes : Music mode, phone mic, and device mic (According to the device configuration) . LED light will change light effect with the volume/noise from the outside as a Microphone. This also works when playing music or there is a noise from outside, the light color will sync with rhythm. The microphone sensitivity can be adjusted.



- 3 -

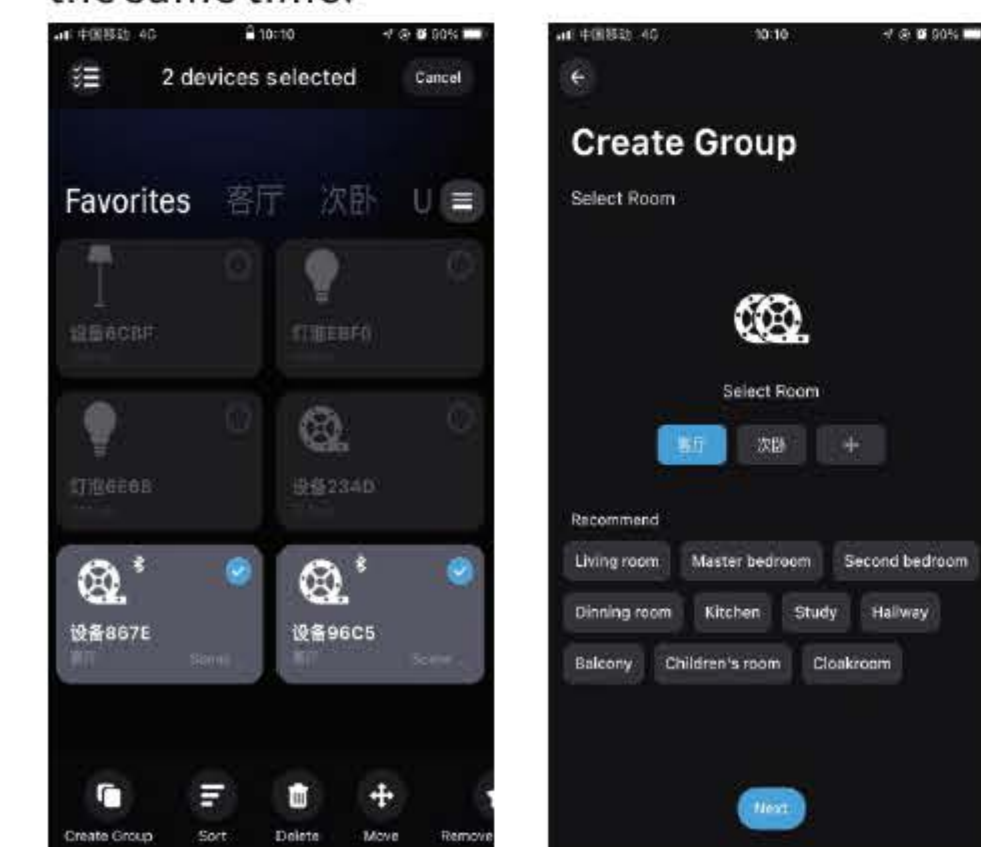
F) Light timer

LED lights can automatically turn on or off at a specific time as the schedule .



G) Group Control

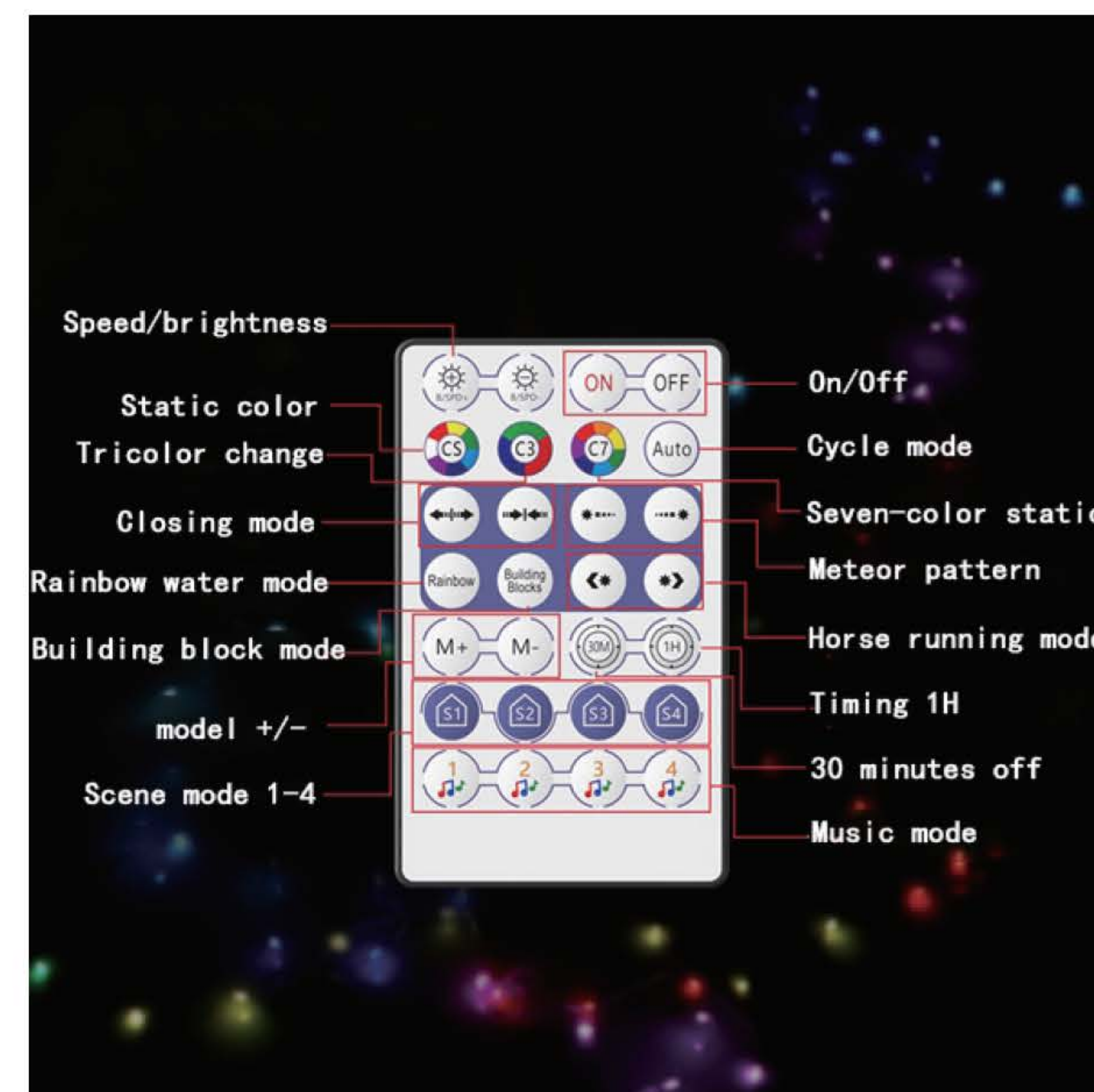
This mode allows you to create different groups to control more than one controllers at the same time.



Attentions

- Please use the product in a dry environment.
- For input voltage, please use the DC voltage within the specified range as instructed in the manual, must not connect into 220V AC directly.
- The product is requested common anode connection. The wrong connection will cause a malfunction.

- 4 -



- 5 -



- 6 -



WARNING

- Please do not put the string lights in contact with heat sources or flames.
- Children under the age of 16 should use this product under adult supervision.



FCC Warning

This device complies with Part 15 of the FCC Rules. Operation is subject to the following two conditions:

(1) This device may not cause harmful interference, and (2) this device must accept any interference received, including interference that may cause undesired operation.

NOTE 1: This equipment has been tested and found to comply with the limits for a Class B digital device, pursuant to part 15 of the FCC Rules. These limits are designed to provide reasonable protection against harmful interference in a residential installation. This equipment generates, uses and can radiate radio frequency energy and, if not installed and used in accordance with the instructions, may cause harmful interference to radio communications. However, there is no guarantee that interference will not occur in a particular installation. If this equipment does cause harmful interference to radio or television reception, which can be determined by turning the equipment off and on, the user is encouraged to try to correct the interference by one or more of the following measures:

- Reorient or relocate the receiving antenna.
- Increase the separation between the equipment and receiver.
- Connect the equipment into an outlet on a circuit different from that to which the receiver is connected.
- Consult the dealer or an experienced radio/TV technician for help.

NOTE 2: Any changes or modifications to this unit not expressly approved by the party responsible for compliance could void the user's authority to operate the equipment.

RF Exposure Statement

To maintain compliance with FCC'S RF Exposure guidelines, This equipment should be installed and operated with minimum 20cm between the radiator and your body. This device and its antenna(s) must not be co-located or operation in conjunction with any other antenna or transmitter.