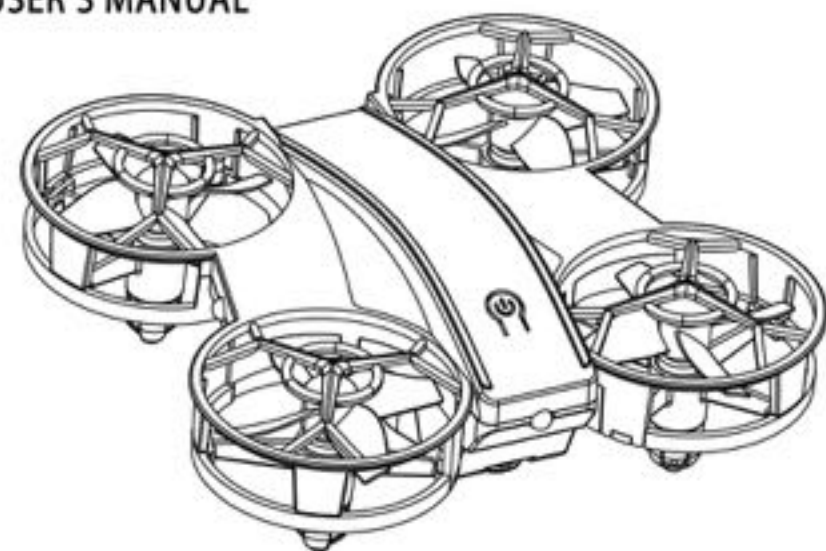


# 08 DEONE

## Four-Axis Drone

### USER'S MANUAL



1. Do not leave a fully charged battery connected to charger, overcharging may shorten its lifetime.
2. If not intend to use the battery for long period, it should be removed and kept in dry and low-temperature environment with full charge. If left unused, a fully charged battery will lose its charge over time. Though equipped with low-voltage protection we still suggest avoiding excessive discharge to a low voltage condition that may cause the failure to charge again.
3. Do not leave the battery on charger over 24 hours, unplug the charger after using.
4. Leaving the battery in hot places, such a close car in summer will reduce the capacity and lifetime of the battery.
5. Do not dispose of battery in a fire as they may explode, battery may also exploded if damaged.
6. Do not disassemble or modify the battery for any purpose.
7. Do not short-circuit the battery. Accidental short-circuiting can occur when a metallic object such as a coin, clip, or pen causes direct connection of the positive(+) and negative(-) terminals of the battery.
8. Short-circuiting the terminals may damage the battery or the connecting object.
9. Do not expose the battery to liquid or subject to strong mechanical shocks

#### How to treat Waste Electrical and Electronic Products

1. Do not place the product as household waste.
2. Follow the local regulations and laws for proper disposal of discarded electronic products.

#### Instructions Before flying

Read through the manual before using  
Keep the small parts of the accessories out of the reach of kids  
Keep the drone 3 meters away from the other people when flying

-1-

#### Flying Precautions

1. Keep small parts out of the reach of children, to avoid choking hazard.
2. The **DRONE** is powerful, when taking off, move the throttle stick forward gradually, to avoid it's rising too fast.
3. After flight, turn off the **DRONE** first, then turn off the controller.
4. Do not put the battery in high temperature or near heat source
5. Note, to avoid injury or damage, the **DRONE** should not be flown nearer than 2 meters/ 7 feet from people or other obstacles.
6. Children should fly the **DRONE** under adult supervision only. Always keep the **DRONE** in clear sight while flying.
7. Always turn off the power of the controller and **DRONE** when not in use.

#### Notification

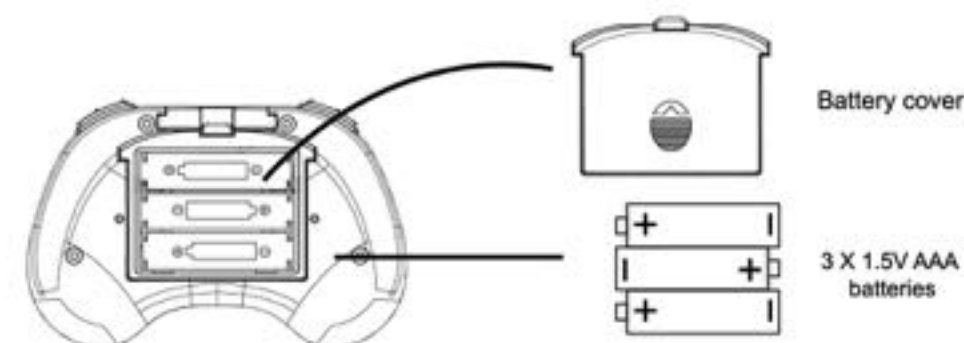
Equipped with low-voltage and over current protection, the Drone will land slowly when the battery is low and the power will be cut if any of the 4 blades is jammed.

#### Maintenance

1. Keep the Drone clean and dry
2. Don't fly the Drone into the water or in the rain
3. Check the Drone before every flying and if any damage is found, don't fly the Drone until it is well repaired.

#### Controller Batteries Installation

##### Controller



1. Installing Batteries: unscrew and open the cover of the battery case, insert 3x1.5V AAA batteries according to the indication in the battery case.
2. Battery installation should be done under adult supervision
3. Don't install the old and new, or different types of batteries together

-2-

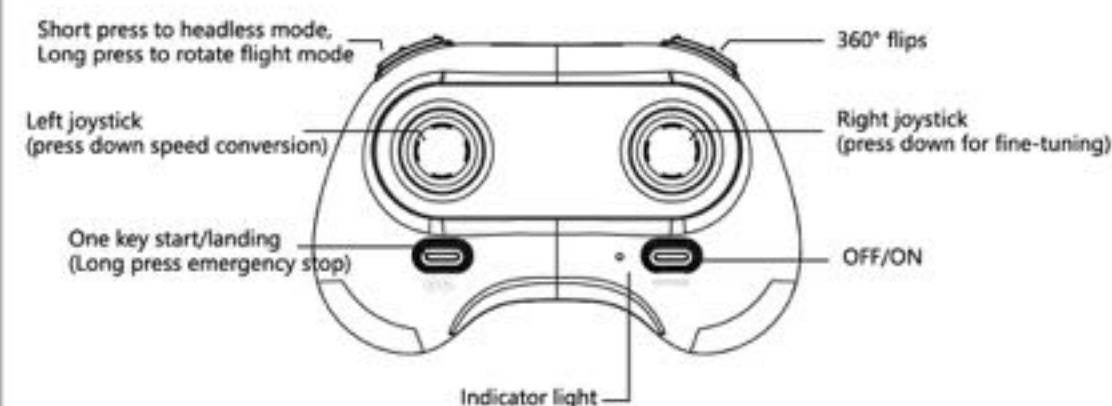
#### Charging

Insert the USB cable to the computer USB port and connect the charging end to the Drone's power port.

**NOTE:** While battery is charging, LED light on USB is on. When fully charged, LED light goes off.

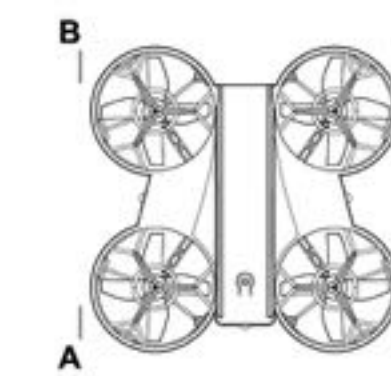


#### Controller



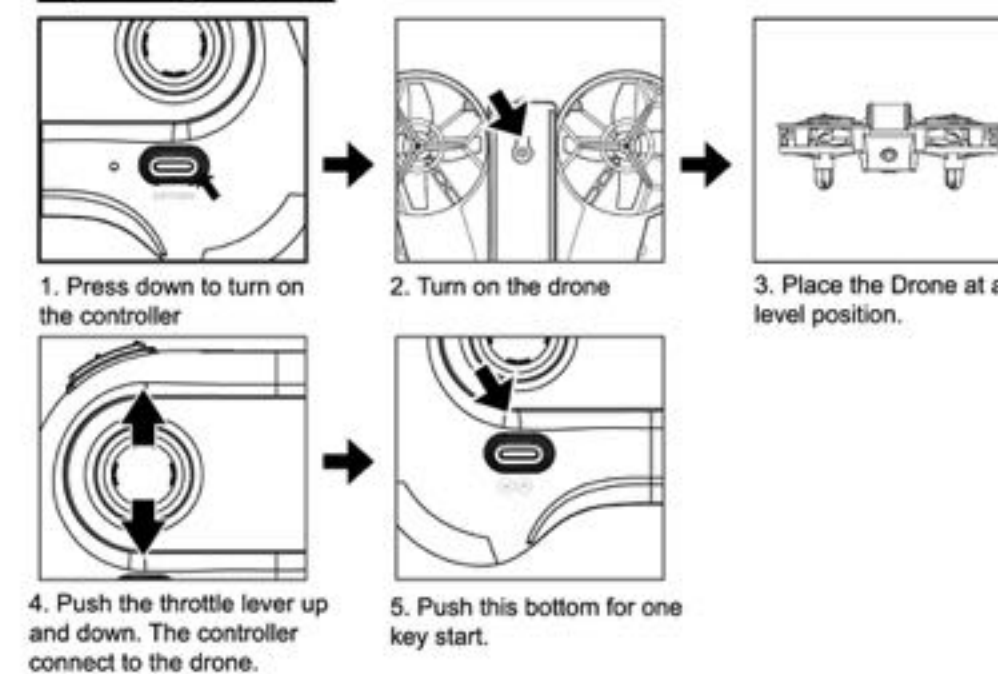
#### Drone

Replacing Damaged blades:  
Your set will come with 4 replacement rotors, two (A) type and two (B) type. You will see the "A" and "B" word on the canopy, put the rotor on the motor accordingly.

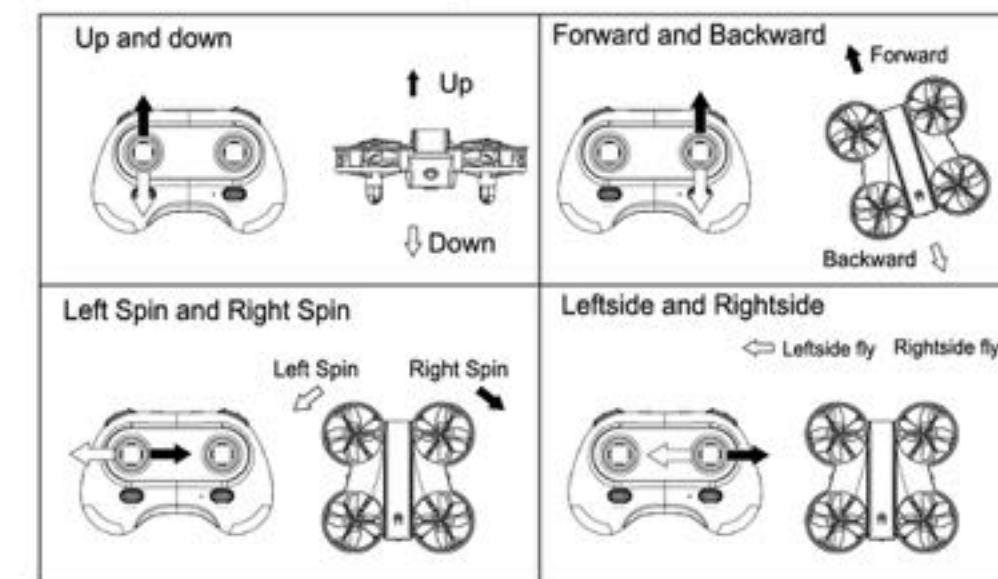


-3-

#### Operating steps

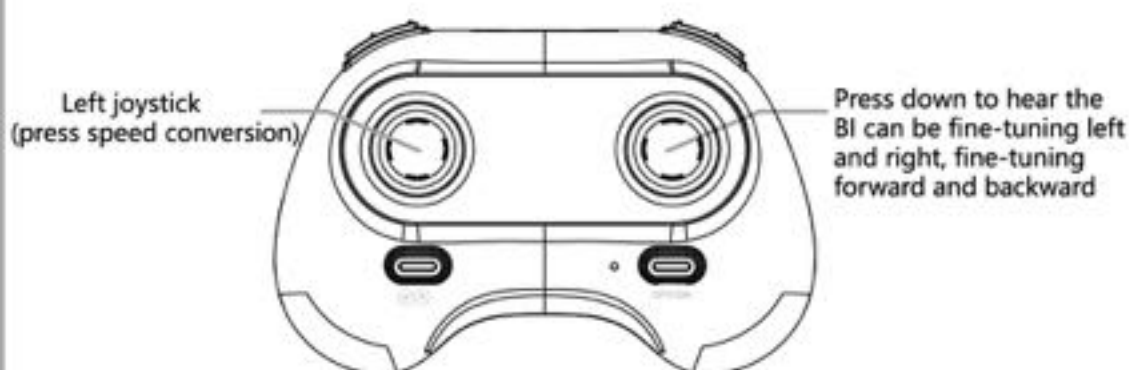


#### Operation and Control



-4-

#### Regulating



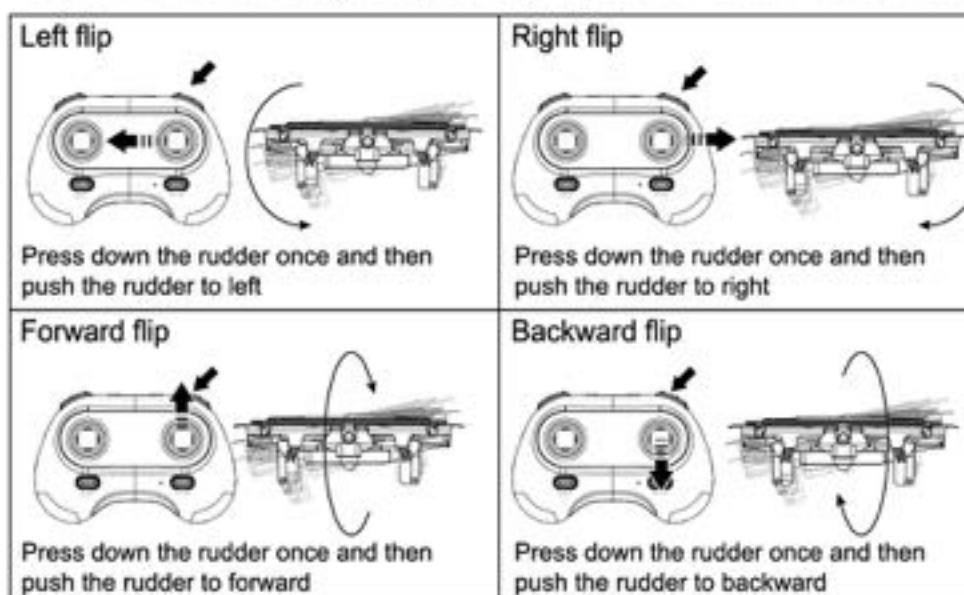
\*Your need to press down the right joystick firstly to into fine-tuning function, in the meanwhile, you will hear one "BI", then you can do the fine-tuning for left, right, forward and backward.

Backward Trim	Forward	Backward	Backward Trimmer
Forward Trim	Backward	Forward	Forward Trimmer
Leftside Trim	Leftside	Leftside	Leftside Trimmer
Rightside Trim	Rightside	Rightside	Rightside Trimmer

-5-

#### 360 degree flips

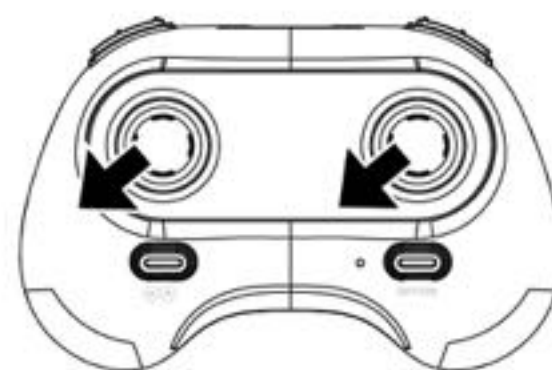
You can perform flips with your **DRONE** in any of the speed settings. Press down the rudder once(one beep sounds) then push the rudder in related direction.



Before you perform a Flip Trick, always make sure you have enough space both above and below your **DRONE**.

#### Auto trim function

Press the throttle and rudder down to 45 degree circle (as below) for 10 second, you will see the light on the PC board of drone flashing rapidly, then pls let go the throttle and rudder, the light on the PC board remains on, the auto trim finishes.

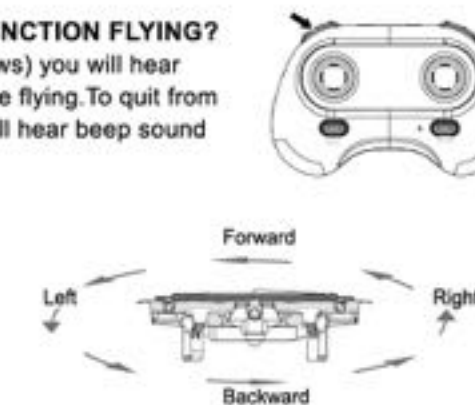


-6-

#### Headless function

##### HOW TO GET INTO/QUIT HEADLESS FUNCTION FLYING?

Press the button on controller(as picture shows) you will hear beep sounds then you get into compass mode flying. To quit from compass mode, just press it again and you will hear beep sound disappears.



##### HOW TO RECOGNIZE THE " FORWARD SIDE" UNDER HEADLESS FUNCTION?

When the drone is taking off, the LED light on the drone stop flashing, at the moment, the drone sets its front side to be the front direction for headless mode flying.

If you want to reset the front direction, then you need to turn off the rc drone and reset it again.

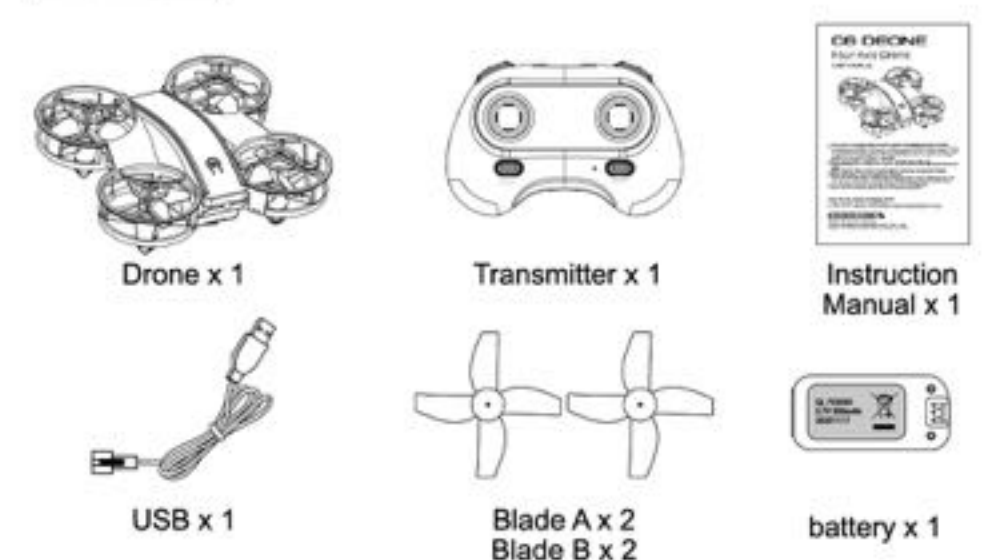
#### 360 degree rotate

Long press down this button to enter 360 degree rotate function, in this function, the drone will enter the Headless mode automatic, to quit from rotate mode, just long press it again.



-7-

#### CONCENT



## FCC Statement

This equipment has been tested and found to comply with the limits for a Class B digital device, pursuant to part 15 of the FCC Rules. These limits are designed to provide reasonable protection against harmful interference in a residential installation. This equipment generates, uses and can radiate radio frequency energy and, if not installed and used in accordance with the instructions, may cause harmful interference to radio communications. However, there is no guarantee that interference will not occur in a particular installation. If this equipment does cause harmful interference to radio or television reception, which can be determined by turning the equipment off and on, the user is encouraged to try to correct the interference by one or more of the following measures:

- Reorient or relocate the receiving antenna.
- Increase the separation between the equipment and receiver.
- Connect the equipment into an outlet on a circuit different from that to which the receiver is connected.
- Consult the dealer or an experienced radio/TV technician for help.

Caution: Any changes or modifications to this device not explicitly approved by manufacturer could void your authority to operate this equipment.

This device complies with part 15 of the FCC Rules. Operation is subject to the following two conditions: (1) This device may not cause harmful interference, and (2) this device must accept any interference received, including interference that may cause undesired operation.

### RF Exposure Information

The device has been evaluated to meet general RF exposure requirement. The device can be used in portable exposure condition without restriction.