

FCC ID: 2A3Z8-S21PRO

Photo of Conducted Emission Measurement

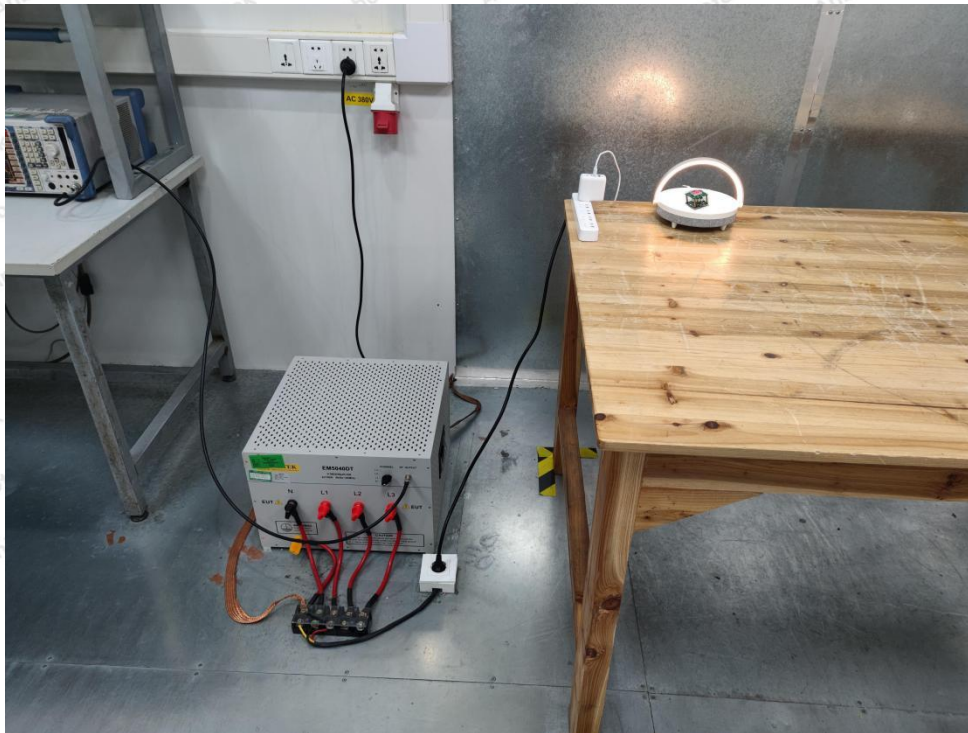


Photo of Radiation Emission Test

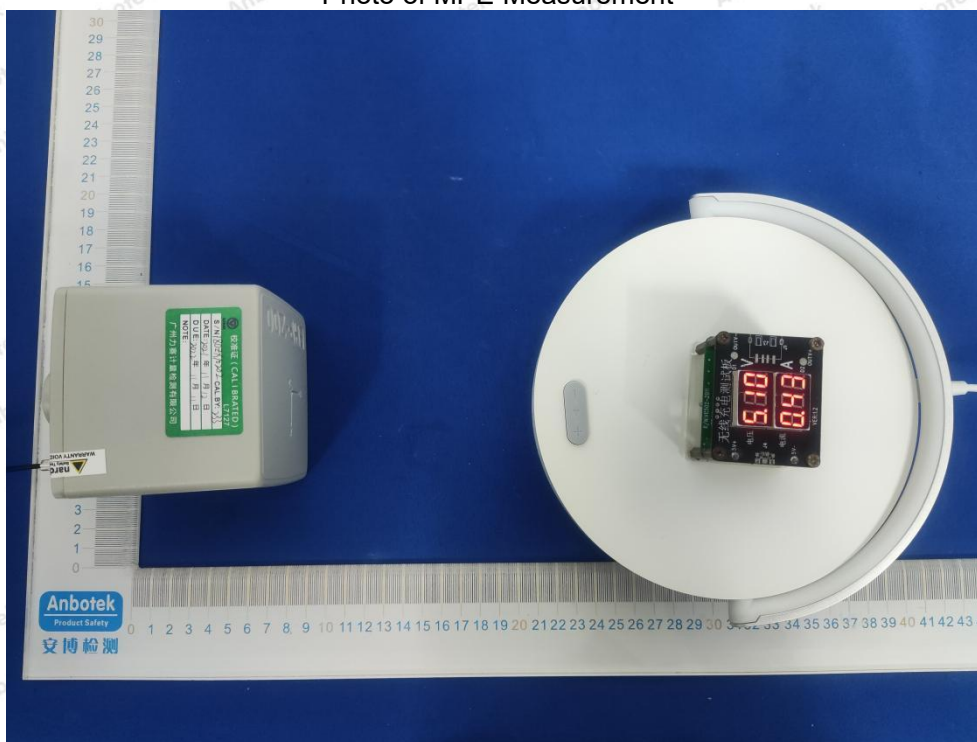
**Shenzhen Anbotech Compliance Laboratory Limited**

Address: 1/F., Building D, Sogood Science and Technology Park, Sanwei Community,  
Hangcheng Street, Bao'an District, Shenzhen, Guangdong, China.  
Tel: (86) 755-26066440 Fax: (86) 755-26014772 Email: service@anbotech.com

Hotline  
400-003-0500  
[www.anbotech.com](http://www.anbotech.com)



Photo of MPE Measurement



## Shenzhen Anbotech Compliance Laboratory Limited

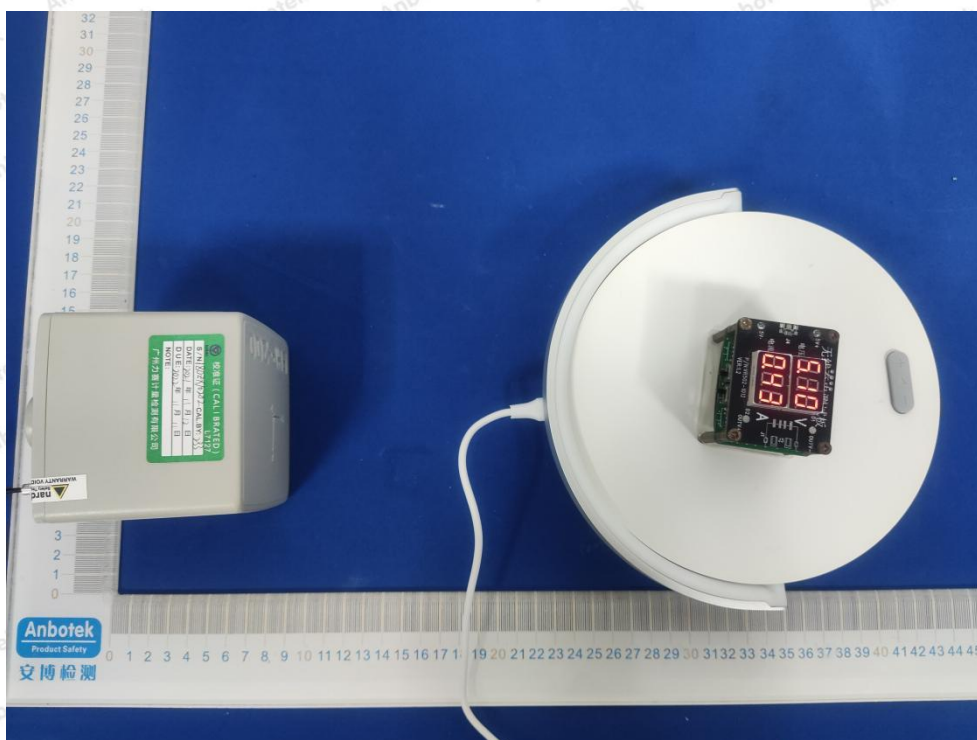
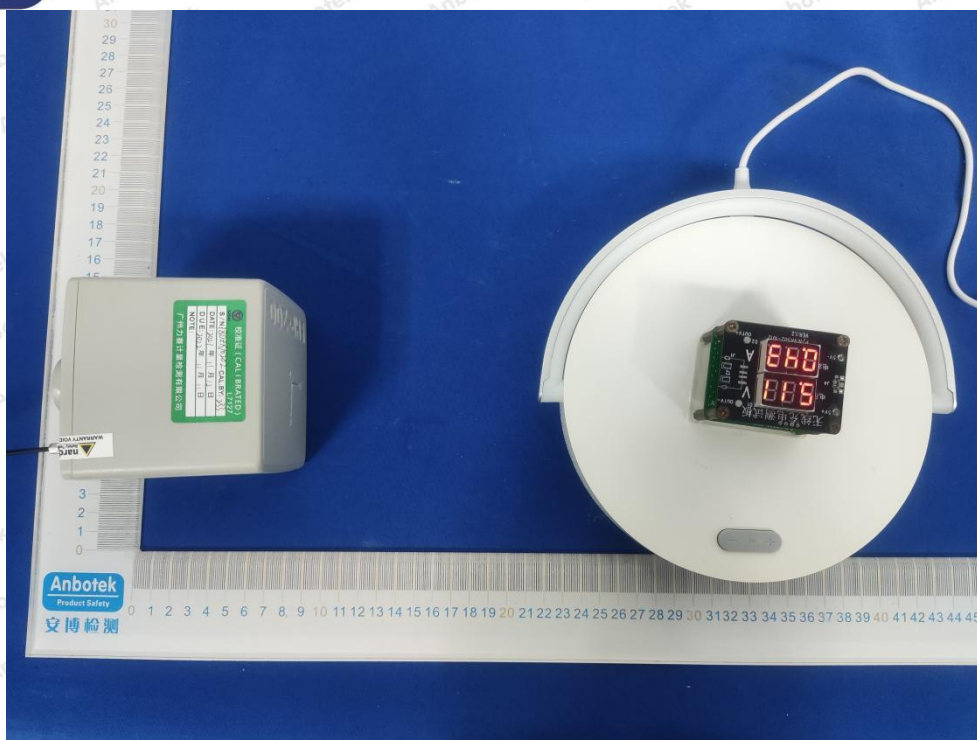
Address: 1/F., Building D, Sogood Science and Technology Park, Sanwei Community,  
Hangcheng Street, Bao'an District, Shenzhen, Guangdong, China.  
Tel: (86) 755-26066440 Fax: (86) 755-26014772 Email: service@anbotech.com

Hotline  
400-003-0500  
www.anbotech.com



# Anbotek

Product Safety



## Shenzhen Anbotek Compliance Laboratory Limited

Address: 1/F., Building D, Sogood Science and Technology Park, Sanwei Community, Hangcheng Street, Bao'an District, Shenzhen, Guangdong, China.

Tel: (86) 755-26066440 Fax: (86) 755-26014772 Email: service@anbotek.com



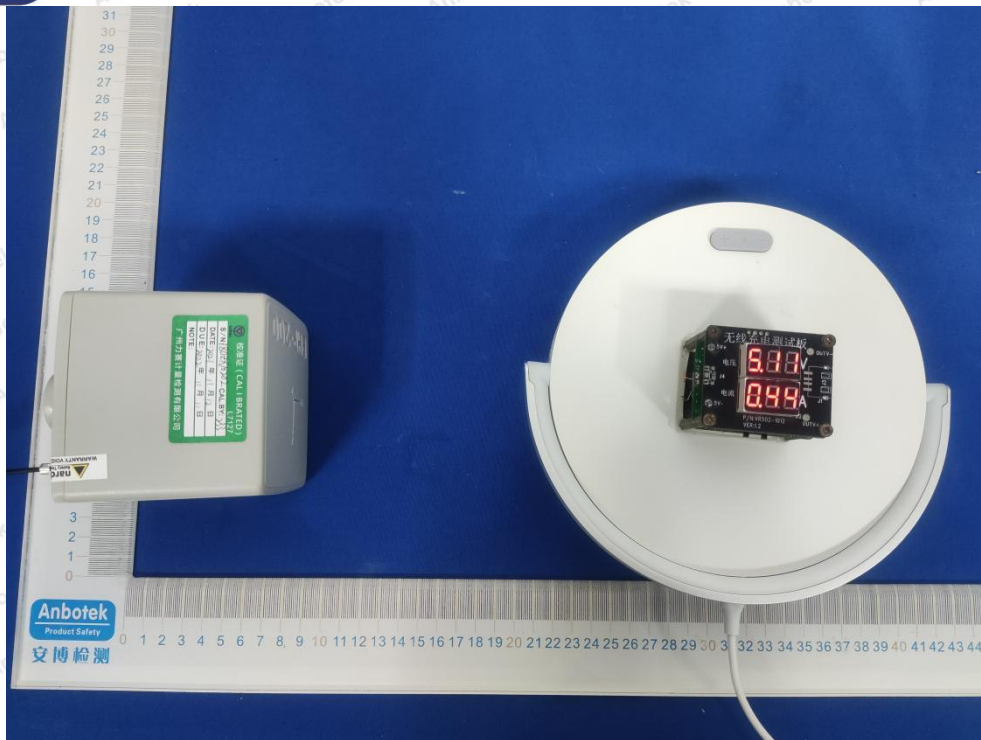
Hotline

400-003-0500

www.anbotek.com

# Anbotek

Product Safety



## Shenzhen Anbotek Compliance Laboratory Limited

Address: 1/F., Building D, Sogood Science and Technology Park, Sanwei Community, Hangcheng Street, Bao'an District, Shenzhen, Guangdong, China.  
Tel: (86) 755-26066440 Fax: (86) 755-26014772 Email: service@anbotek.com

Hotline  
400-003-0500  
[www.anbotek.com](http://www.anbotek.com)