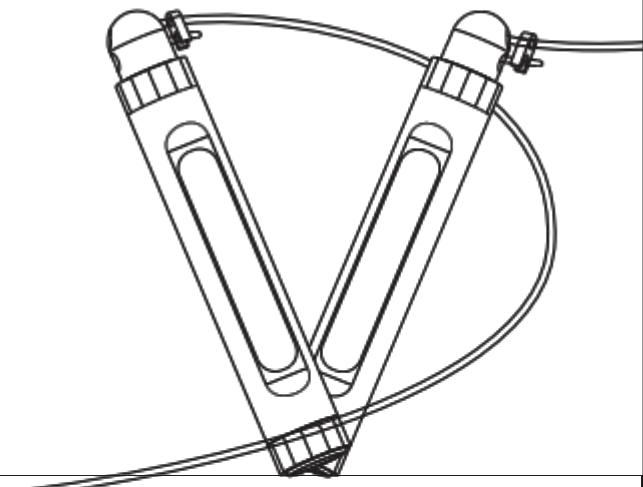
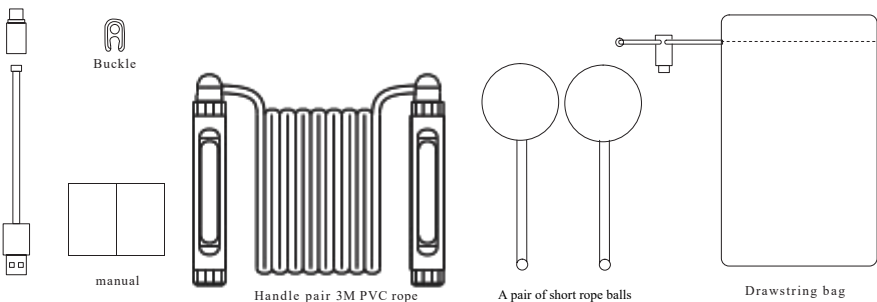


# DuHua Intelligent skipping rope:BJX-ST-V001

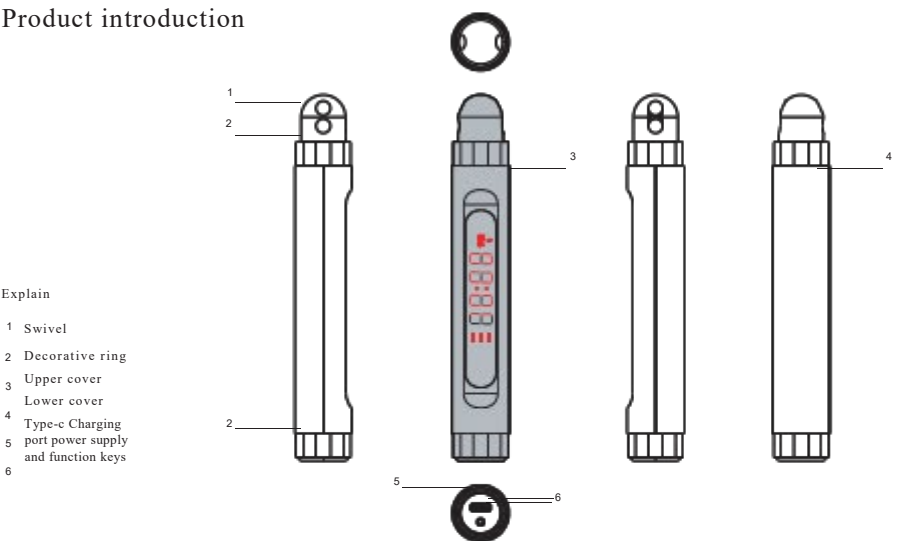
## Product manual



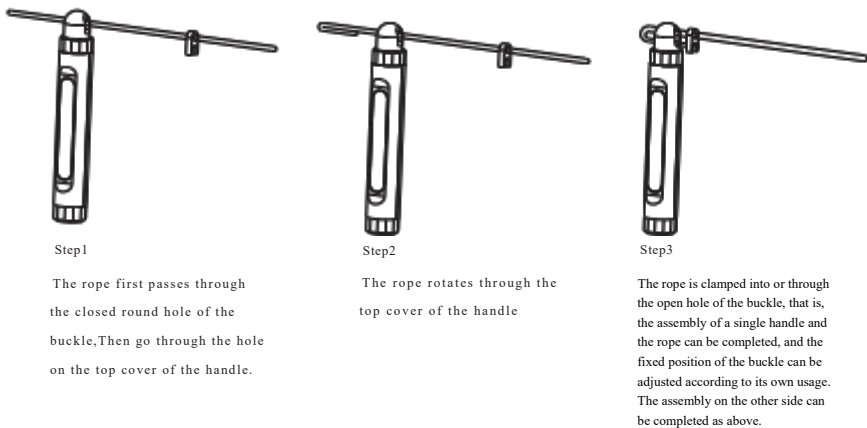
### Packing list



### Product introduction



### Assembly mode



### Operating instructions

- 1: Press and hold the power key for 3S, all symbols of the product will light up, the machine will start successfully, and the machine will default to the free jump mode.
- 2: Press and hold the power key for 3S, the display is "off", and the shutdown is successful.
- 3: Short press the power key once to freely switch the modes of free jump, counting jump and timing jump.
- 4: In the free jump mode, press the power key for three consecutive times to reset the data to zero.
- 5: Bluetooth connection, the Bluetooth symbol lights up after the mobile terminal links the device.
- 6: The battery display grid will be reduced by one grid for every 30% reduction in power, and the low-power display will be displayed "Lo"

### Basic parameters

Product name: Intelligent Skipping Rope  
Product model: BJX-ST-V001  
Material type: Handle PC+ABS, Rope PVC  
Product weight: Single handle 75g  
Ratings:5V, 200mA  
Rope diameter:4.5mm  
Rope length: Long rope 2.8m, Short rope 30mm  
Interface type: Type-C  
Battery capacity: 300mAH  
Charging time: 2H  
Power supply mode: Rechargeable lithium battery Product  
size: length: 165mm, Diameter: 25.5mm  
Working temperature: 0~40°

### Matters needing attention

- 1: This product is not waterproof, do not use outdoors in rainy days.
- 2: Be careful to plug and unplug when charging to avoid damage.
- 3: Wipe handle with dry cloth, do not touch water.
- 4: Please evaluate your condition carefully and do warm-up exercises before jumping rope.
- 5: Keep the product out of reach of infants.
- 6: This product cannot be used during charging. After charging, unplug the charger and do not charge all the time.
- 7: Keep in a dry and ventilated place when idle, keep away from heat source or liquid area.

**FCC Caution:**

This device complies with part 15 of the FCC Rules. Operation is subject to the following two conditions: (1) This device may not cause harmful interference, and (2) this device must accept any interference received, including interference that may cause undesired operation.

Any Changes or modifications not expressly approved by the party responsible for compliance could void the user's authority to operate the equipment.

**Note:** This equipment has been tested and found to comply with the limits for a Class B digital device, pursuant to part 15 of the FCC Rules. These limits are designed to provide reasonable protection against harmful interference in a residential installation. This equipment generates uses and can radiate radio frequency energy and, if not installed and used in accordance with the instructions, may cause harmful interference to radio communications. However, there is no guarantee that interference will not occur in a particular installation. If this equipment does cause harmful interference to radio or television reception, which can be determined by turning the equipment off and on, the user is encouraged to try to correct the interference by one or more of the following measures:

- Reorient or relocate the receiving antenna.
- Increase the separation between the equipment and receiver.
- Connect the equipment into an outlet on a circuit different from that to which the receiver is connected.
- Consult the dealer or an experienced radio/TV technician for help.

The device has been evaluated to meet general RF exposure requirement. The device can be used in portable exposure condition without restriction.