

Table of Contents

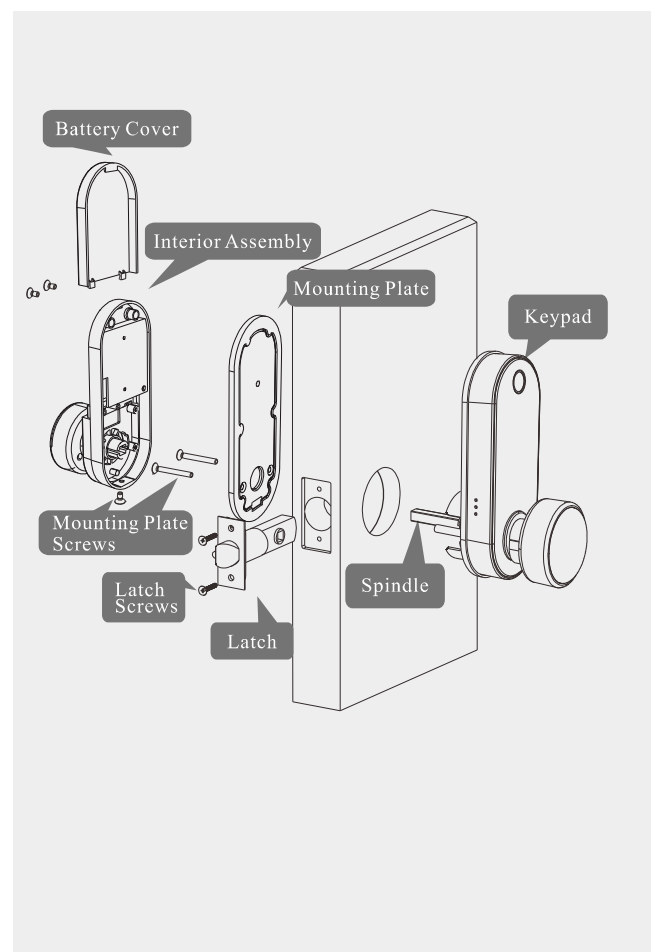
Installation and setting

- <1> Installation Overview
- <2> Package List
- <3> Step 1:
Prepare the door and check dimensions
- <5> Step 2:
Install the latch and strike
- <9> Step 3:
Insert the spindle
- <9> Step 4:
Install the keypad and mounting plate
- <11> Step 5:
Install the interior assembly
- <13> How to Use
- <14> Low Power/Emergency Power
- <15> Factory Reset
- <16> Programming Instructions

Others

- <18> App Guide
- <30> Gateway Management
- <32> Troubleshooting
- <33> FCC Warning
- <34> About GEONFINO

Installation Overview



Installation Guide

Package List

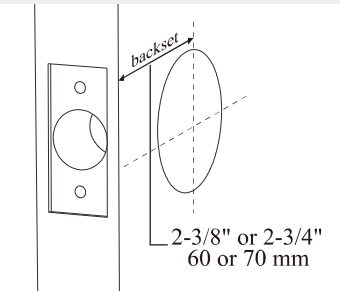
A.Latch	B.Keypad	C.Interior Assembly
D.Mounting Plate	E.Spindle	F.Studs
G.Latch/Strike Screws	H.Mounting Plate Screws	I.Mounting Plate Screws
J.Strike/Strike Box	K.RFID Cards	L.Keys

<2>

STEP.1

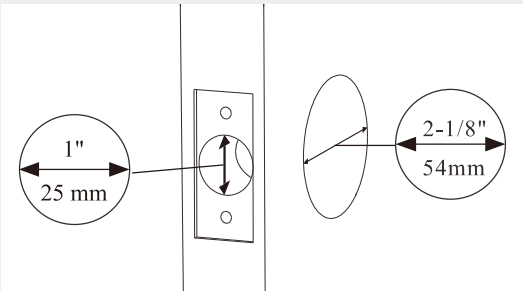
1 Prepare the door and check dimensions

A Measure to confirm that the backset is either 2-3/8" or 2-3/4" (60 or 70mm).



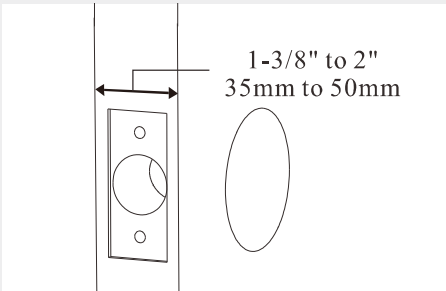
B Measure to confirm that the hole in the door is 2-1/8" (54mm).

Measure to confirm that the hole in the door edge is 1" (25mm).



<3>

C Measure to confirm that the door is 1-3/8" to 2" (35mm to 50mm) thick.

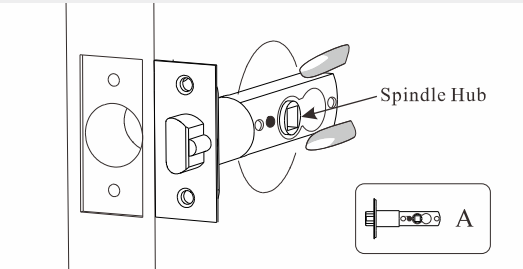


<4>

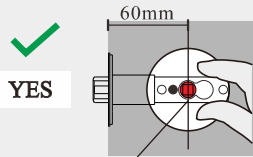
STEP.2

2 Install the latch and the strike

A Hold the latch in front of the door hole, with the face of the latch flush against the door edge.

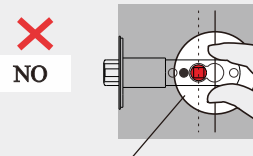


Is the Spindle Hub placed in the center of the door hole?



The Spindle Hub is placed in center of the door hole.

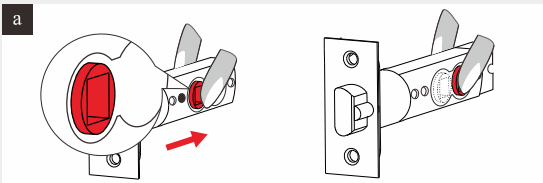
The Spindle Hub should be remained in the position for installation.



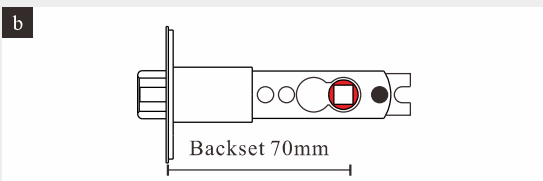
The Spindle Hub isn't placed in the right position.

It maybe the door backset that is 70mm. The Spindle Hub Adjustment is required before installation.

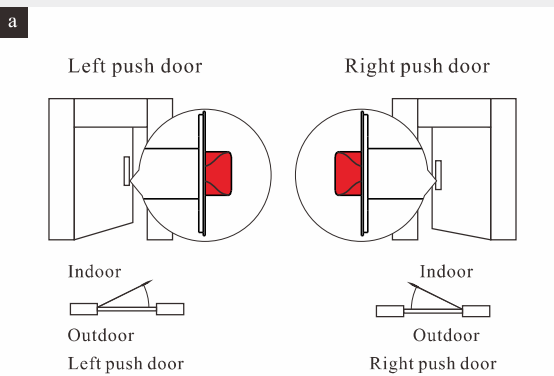
<5>



Slide the Spindle Hub to the other side.

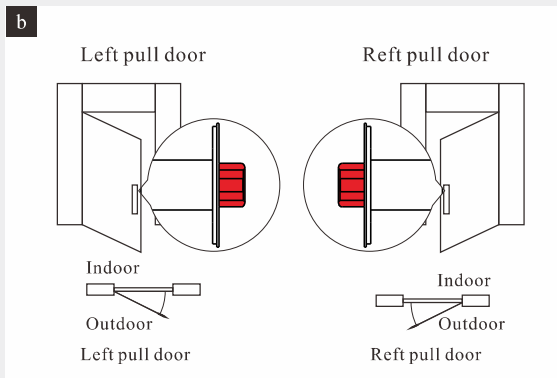


B Determine the direction of the latch.



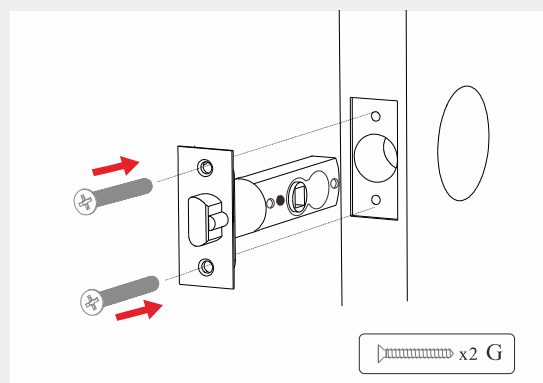
When the door is pushed inwards, the latch is installed outwards.

<6>



When the door is pulled out, the latch is installed inwards.

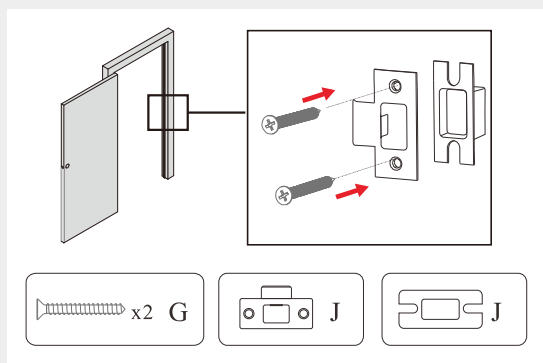
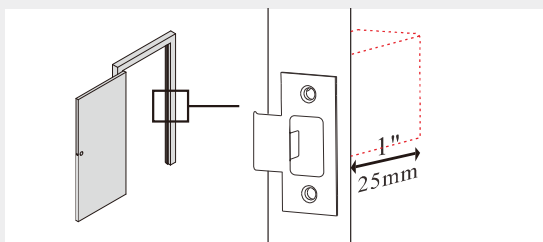
C Install the latch



<7>

C Install the strike and the strike box

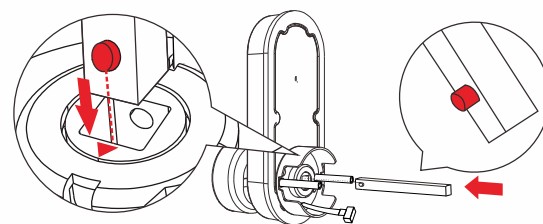
IMPORTANT:
Make sure the hole in door frame is drilled a minimum of 1" (25mm) deep.



<8>

STEP.3

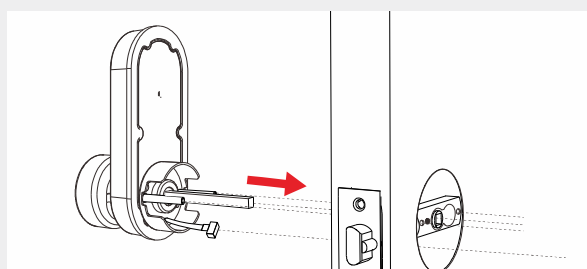
3 Insert the spindle



Please keep press the button of the spindle. Then, insert the spindle into the knob (The convex point of the spindle corresponds to the triangle mark on knob). Make sure that the button is locked into the hole of knob.

STEP.4

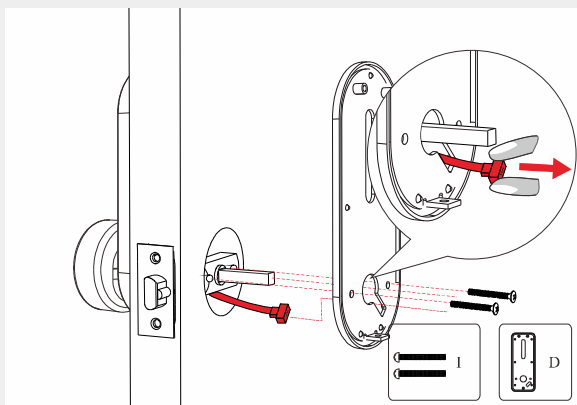
4.1 Install the keypad



Install the keypad directly

<9>

4.2 Install the mounting plate

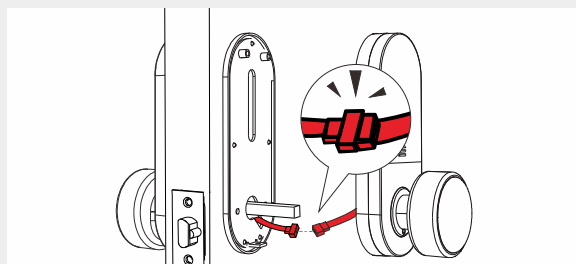


The data cable passes through the mounting plate as shown in the figure above, the spindle passes through the round hole of the mounting plate, and then fix the mounting plate with screws.

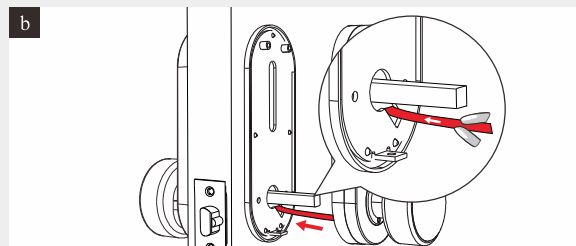
<10>

STEP.5

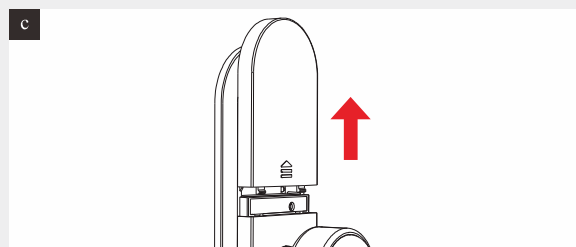
5 Install the interior assembly



Connect the data cable

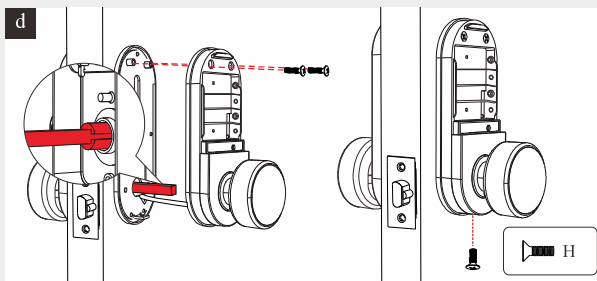


Surplus cable should be stuffed into the door

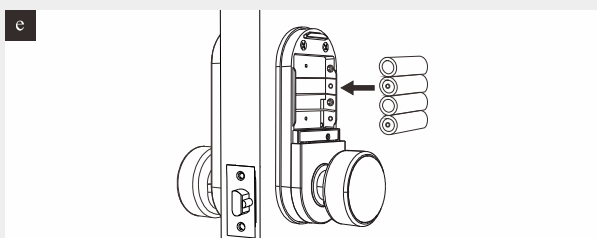


Remove the battery cover

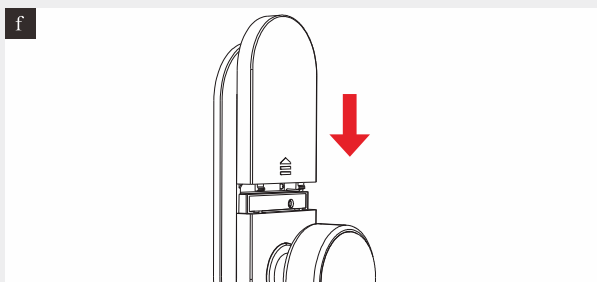
<11>



Install the interior assembly with screws



Install the battery

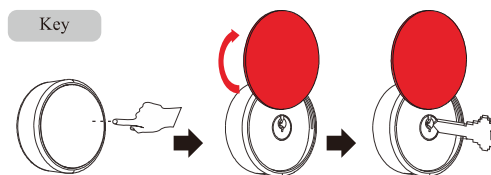


Install the battery cover

<12>

How to Use

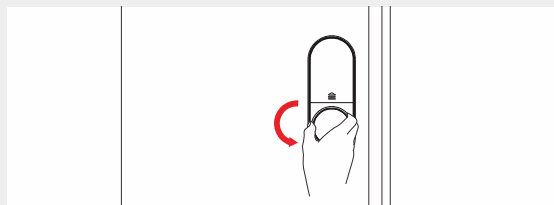
Unlock the door from outside



Press the lock cover as shown to tilt it up. Then, rotate the lock cover and insert the key to unlock the lock.

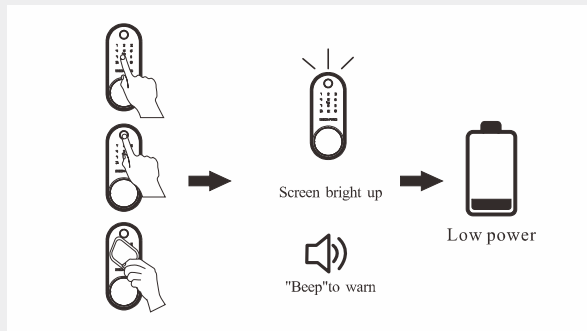


Unlock the door from inside



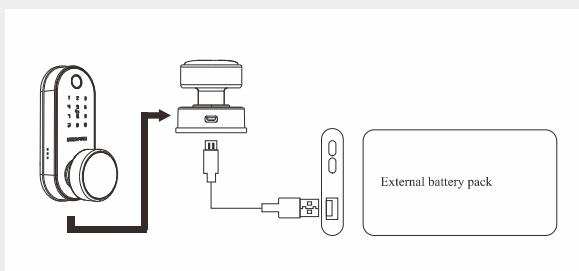
<13>

Low Power



When the smart lock is open, the screen will brighten up and “beep” to warn that the battery is low power.

Emergency Power



If the lock is low power and unable to operate, there is a micro USB power socket at the bottom of lock for power supply.

<14>

Factory Default Setting

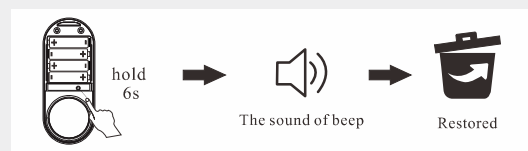
Settings	Factory Default
Master Code	123456
Auto Lock	Enabled
Silent Mode	Disabled
Wrong Code Entry Limit	5 times
Shutdown Time	5 times

Factory Reset

Restore on lock

1. Press and hold the reset button.
2. Keep holding the reset button for 6 seconds, until you hear the sound of a beep.

Note: This operation IC wired and battery need to be installed.



<15>

Programming Instructions

Information & Safety warnings

- Protect your User Codes and Master Code.
- Keep your key secure. It is suggested to keep it outside the door, such as in your car.
- Restrict access to your lock's interior assembly and routinely check your settings to ensure they have not been altered without your knowledge.
- This lockset is designed to provide the highest standard of product quality and performance. Care should be taken to ensure a long-lasting finish. When cleaning is required, use a soft, damp cloth. Using lacquer thinner, caustic soaps, abrasive cleaners or polishes could damage the coating and result in tarnishing.

⚠ IMPORTANT: Do not load batteries until the lock is completely installed.

<16>

Definitions

Master code

The master code can be used to unlock the door in vacation mode. The default master code is usually set by the manufacturer and needs to be changed to a unique code by the property owner or manager before programming. It is essential to keep the master code confidential to maintain the security of the property.

The property owner/manager should keep this information confidential.

1. Master Code (6 to 8) digits: The default Master Code is 123456. It is required that you change it to a code of your own before programming.
2. User Code (6 to 8) digits: A total of 200 User Codes can be programmed.

Wrong entry limit

After 5 incorrect attempts, the unit will shut down for 5 minutes.

Unlock with fake code

The user can prevent the exposure of the PIN code to strangers by entering random digits before or after the correct PIN code.

83618 137192 14710
 password
 Random digits

<17>