

GEONFINO



Smart Lock
Model No.G4 Pro
Installation instruction



PASSWORD



FINGERPRINT



APP



RFID CARD



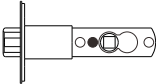

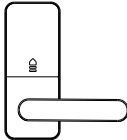

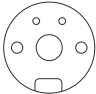


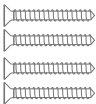
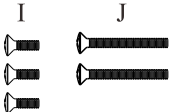
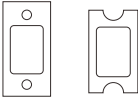

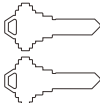
BLUETOOTH

Please keep and read this instruction before installation, we also prepared instruction video to help on Amazon Page. If you need further assistance, please contact Customer Service by email: geonfino@afterservice.vip

Table of Contents

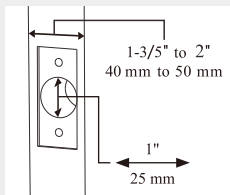
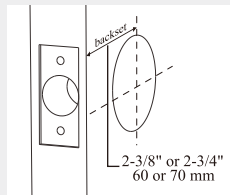
- <1> Installation Guide
- <12> How to Use
- <13> Programming Instructions
- <15> App Guide
- <26> Auto Re-lock Mode
- <27> Gateway Management
- <28> Low Power/Emergent Power
- <28> Restore Factory Settings
- <29> Factory Default Settings
- <30> Troubleshooting
- <31> FCC Warning
- <32> About GEONFINO

Installation Guide

| Package List | | |
|---|---|---|
| A.Latch  | B.Keypad  | C.Interior Assembly  |
| D.Mounting Plate  | E.Spacer  | F.Square Pole  |
| G.Stud  | H.Latch/Strike Screws  | I/J.Mounting Plate Screws  |
| K.Strike/Strike Box  | L.RFID Card  | M.Key  |

1 Prepare the door and check dimensions

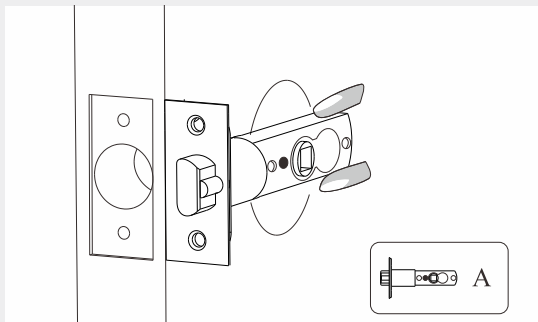
- A** Measure to confirm that the backset is either 2-3/8" or 2-3/4" (60 or 70 mm).



- B** Measure to confirm that the hole in the door edge is 1" (25mm). And measure to confirm that the door is 1-3/5" to 2" (40 mm to 50 mm) thick.

2 Install the latch and strike

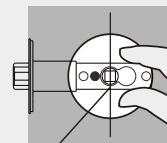
- A** Hold the latch in front of the door hole, with the latch face flush against the door edge.



<2>

Is the slotted hole centered in the door hole?

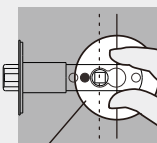
YES



Slotted hole is centered.

No adjustment is required. Proceed to next step.

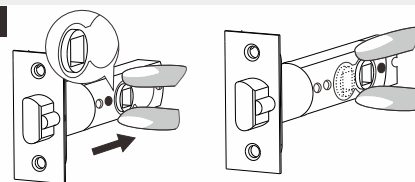
NO



Slotted hole is not centered.

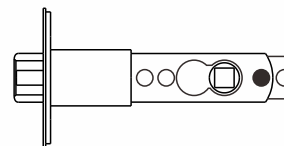
Rotate and pull the latch as shown to extend latch.

a



Slide the slot to the right as shown

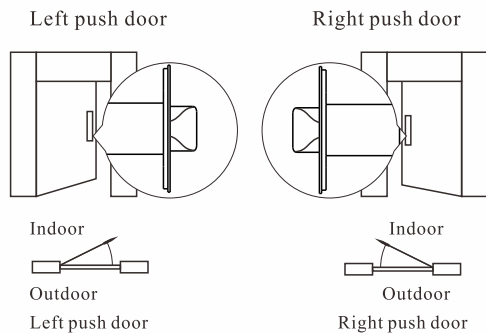
b



<3>

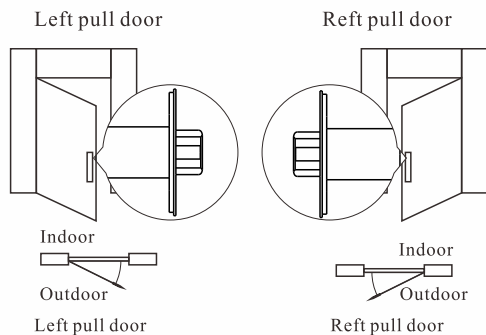
B Determine the direction of the latch tongue.

a



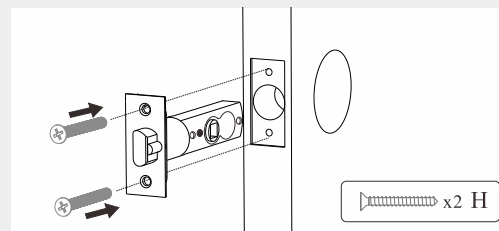
When the door is pushed inward, the latch tongue is installed outwards.

b



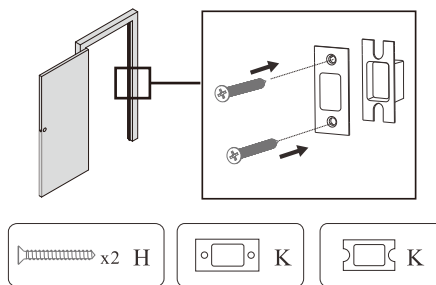
When the door is pulled out, the latch tongue is installed inward.

C Install the latch



D Install strike on the door frame.

⚠ IMPORTANT: Make sure hole in door frame is drilled a minimum of 1" (25 mm) deep.

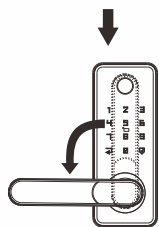
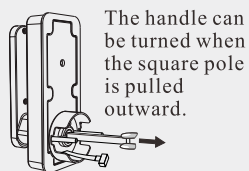
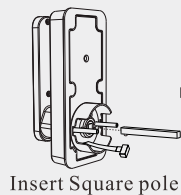
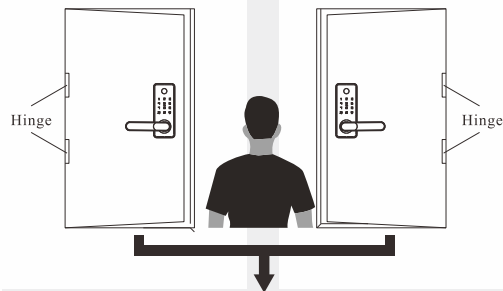


3 Confirm the direction of the door

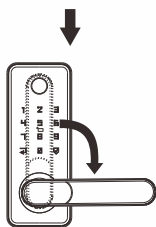
⚠ Look at the door from OUTSIDE

Left Hand Door

Right Hand Door

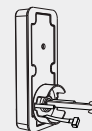


Rotate the front handle 90° to the left.

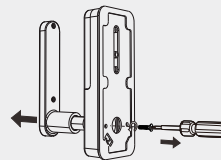


Rotate the front handle 90° to the right.

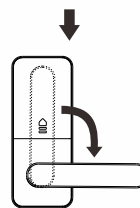
<6>



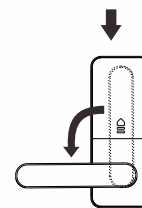
Press the square pole to restore



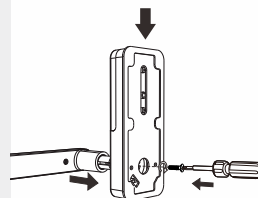
Unscrew the rear handle screw as shown in the picture and remove the rear handle.



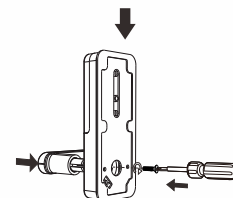
Rotate the rear handle 90° to the right.



Rotate the rear handle 90° to the left.



Install the rear handle as shown.



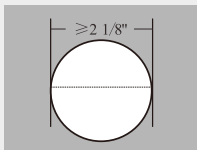
Install the rear handle as shown.

<7>

4 Install the keypad

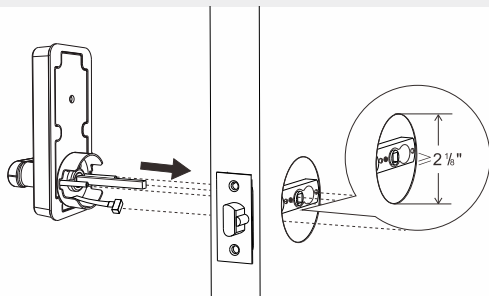
If the hole is bigger than 2 1/8" (54mm), install the keypad directly.

YES



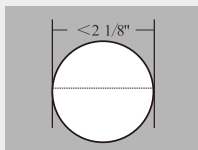
No adjustment is required. Proceed to next step.

a



Install the keypad directly

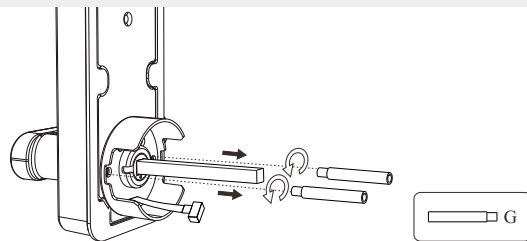
NO



Remove the spacer

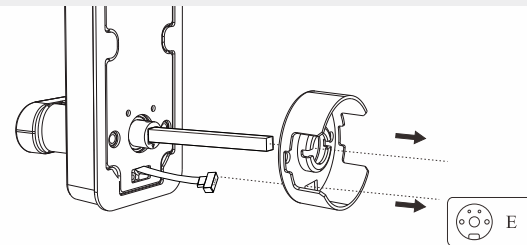
<8>

a



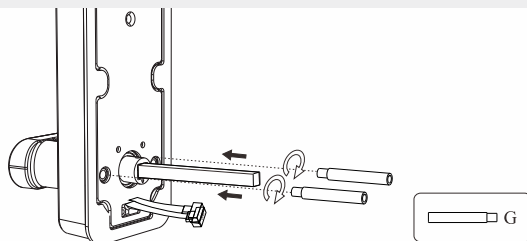
Twist out the stud

b



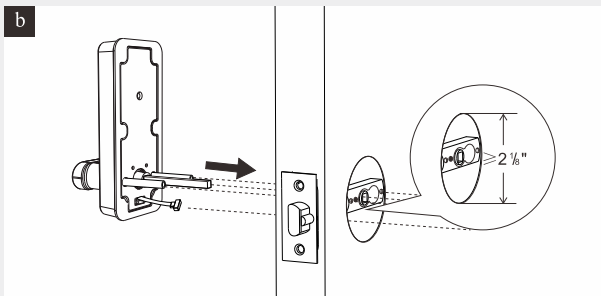
Remove the spacer

c



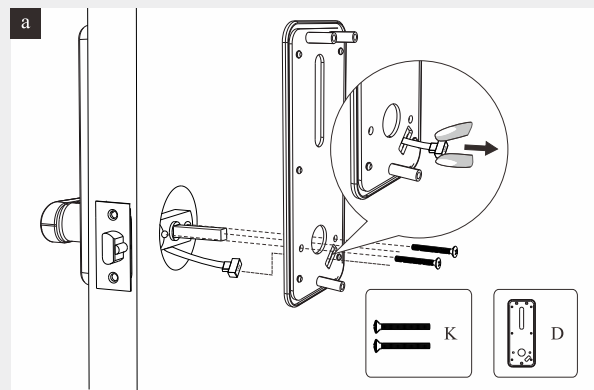
Reinstall the studs

<9>

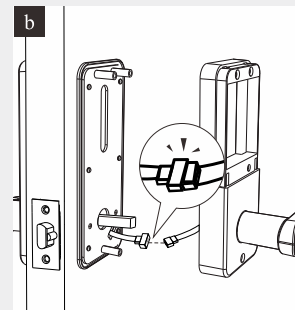


Install the keypad

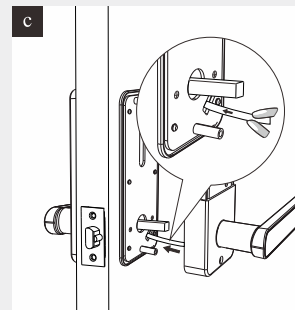
5 Install the interior assembly



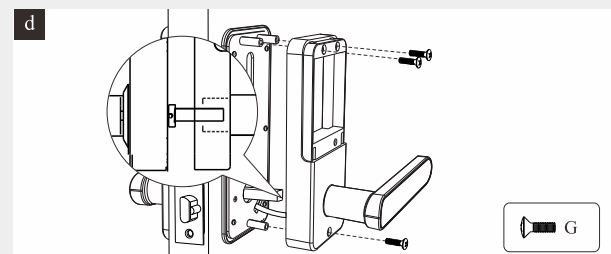
The data cable passes through the mounting plate as shown in the figure above, the square pole passes through the round hole of the mounting plate, and then fix the mounting plate with screws.



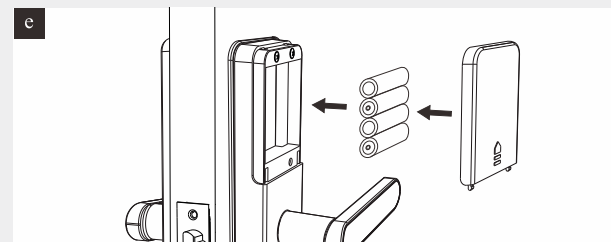
Connect the data cable



Too long data cable stuffed into the door



Install the interior assembly with screws



Install the battery and battery cover

How to use

Lock the door from outside

Manual Mode

Press "✓" key on keypad for 3 seconds.



Lock the door from inside

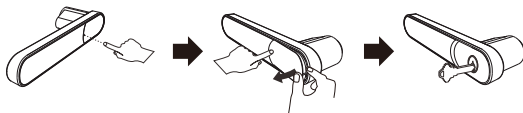
Manual Mode

Rotate the thumb turn to lock position..



Unlock the door from outside

Key



Fingerprint



Master/
User code



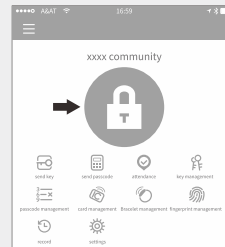
RFID Card



Unlock the door from inside



Rotate the thumb turn to unlock position.



Via app

Long press "🔒" to lock the door from outside or inside.
Click "🔓" to unlock the door from outside or inside.

Note: Please keep your phone near the door lock within 32.8ft (10m).

Programming instructions

Information & Safety warnings

- Protect your User Codes and Master Code.
- Protect your key. It is suggested to put it outside the door, such as your car.
- Restrict access to your lock's interior assembly and routinely check your settings to ensure they have not been altered without your knowledge.
- This lockset is designed to provide the highest standard of product quality and performance. Care should be taken to ensure a long-lasting finish. When cleaning is required, use a soft, damp cloth. Using lacquer thinner, caustic soaps, abrasive cleaners or polishes could damage the coating and result in tarnishing.

⚠ IMPORTANT: Do not load batteries until lock is completely installed.