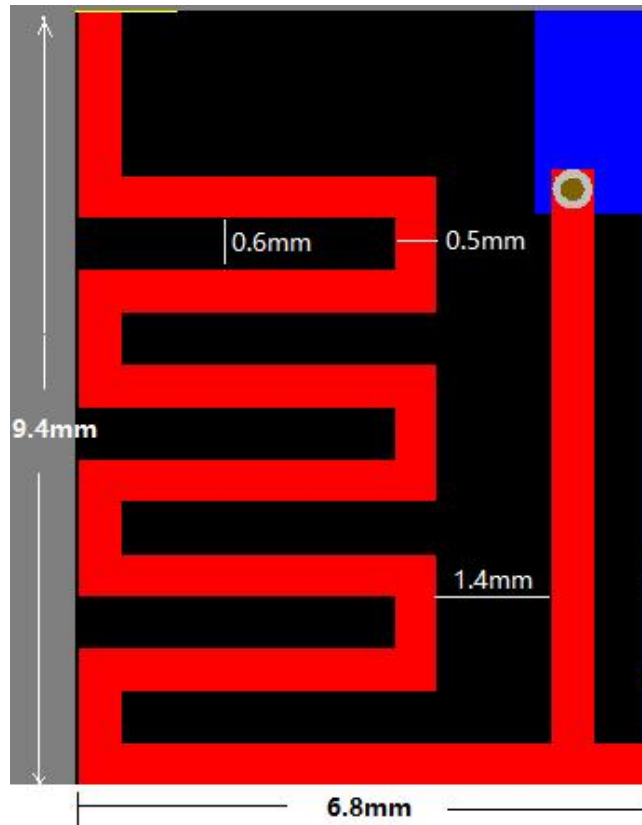


Grow3 Mesh Module PCB Antenna Specification

1. PCB Antenna



The antenna is PCB design only, without extra antenna product in use

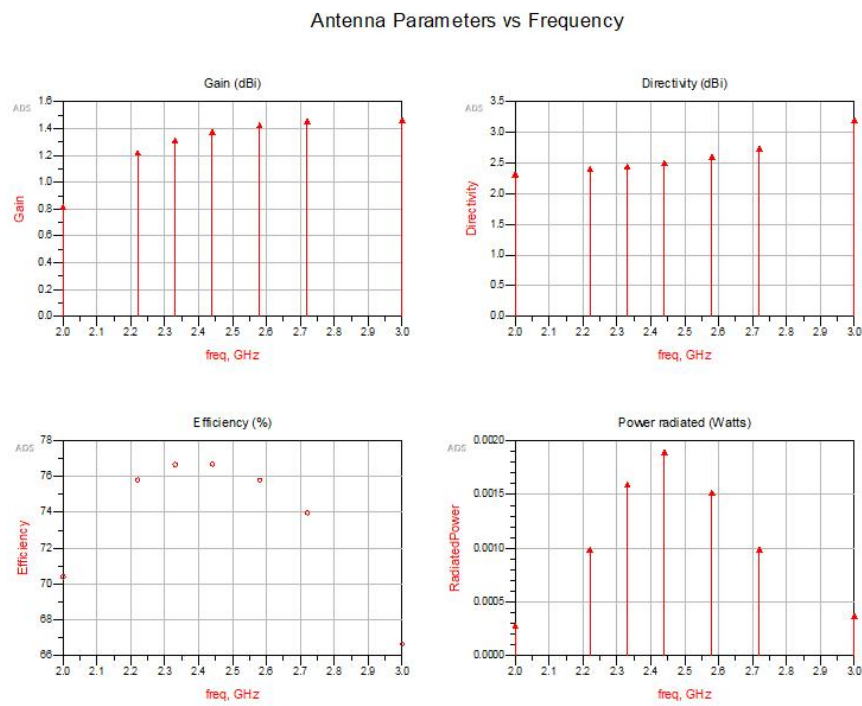
2. PCB MIFA antenna 2.44GHz Specification

Frequency (GHz)	2.44	
Input power (Watts)	0.00249995	
Radiated power (Watts)	0.00191734	
Directivity(dBi)	2.54661	
Gain (dBi)	1.3943	
Radiation efficiency (%)	76.6952	
Maximum intensity (Watts/Steradian)	0.000274253	
Effective angle (Steradians)	6.99115	
Angle of U Max (theta, phi)	170	247
E(theta) max (mag,phase)	0.192529	70.7508
E(phi) max (mag,phase)	0.41179	65.3667
E(x) max (mag,phase)	0.452866	66.2462
E(y) max (mag,phase)	0.0208236	117.221
E(z) max (mag,phase)	0.0334323	-109.249

3.

Manufacturer:	LED Smart Inc
Address:	18905 32 Ave., Surrey BC V3Z 1A7
Model No.:	UNILYNX-ANTENNA

4. PCB MIFA Antenna Frequency Features



5. PCB MIFA antenna 3D model

