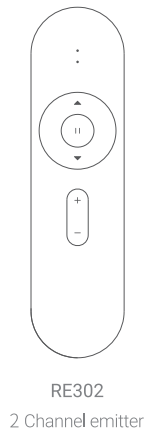
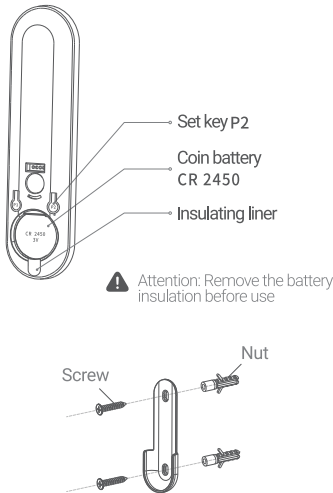
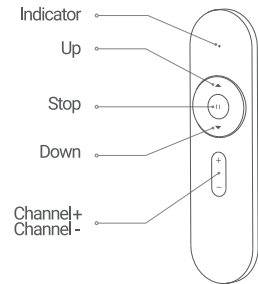


# 2 Channel Emitter User Manual

Please read this manual carefully before use the product,and keep properly

## 01 Product description

Package containing: Emitter\*1,Bracket\*1 ,  
Operation manual\*1,  
Screw\*2 ,Nut\*2



## 02 Technical parameters

Product name: 2 Channel emitter  
Product model: RE302  
Product size : 130\*37\*15mm  
Input voltage: 3.0 V  
Transmission distance: Exterior conditions>150m  
Interior conditions>35m  
Operating frequency: 433.92MHz  
Working temperature: -10%~55%  
Working humidity: 10%~90%RH, no condensing

## 03 Features

1. RE302The indicator light is the chosen channel.
2. RE302: All indicator lights on means group control channel.
3. Group control channel: Take RE302 as an example, group control can control all the paired motors in 1、2 channels.

## 04 Operation step

Keystroke	Time	Description
▲ + ▼	Long press 2 seconds	feature settings
▲ + ▼	Once	Pairing
	Long press 2 seconds	Switch direction/ setting confirmation
▲ +	Long press 2 seconds	Speed regulation+
▼ +	Long press 2 seconds	Speed regulation-

Remarks: Please follow up with motor instruction manual.

## 05 Warnings and precautions ⚠

- 1.For fear of shortening the life of the emitter, please avoid dampness and bumps in use. If the emitter range shortens or the emitter becomes insensitive, please replace the old battery with battery of the same model and recycle the replaced battery.
- 2.Please do not use battery of different types for fear of explosion.

## 06 The warranty type

Type	Content	Warranty time
The whole machine	Remote control	2 years

**FCC Compliance Notice**

This device complies with part 15 of the FCC Rules. Operation is subject to the following two conditions:

- (1) This device may not cause harmful interference, and
- (2) this device must accept any interference received, including interference that may cause undesired operation.

Any changes or modifications not expressly approved by the party responsible for compliance could void the user's authority to operate the equipment.

This equipment has been tested and found to comply with the limits for a Class B digital device, pursuant to part 15 of the FCC Rules. These limits are designed to provide reasonable protection against harmful interference in a residential installation. This equipment generates, uses and can radiate radio frequency energy and, if not installed and used in accordance with the instructions, may cause harmful interference to radio communications. However, there is no guarantee that interference will not occur in a particular installation. If this equipment does cause harmful interference to radio or television reception, which can be determined by turning the equipment off and on, the user is encouraged to try to correct the interference by one or more of the following measures:

- Reorient or relocate the receiving antenna.
- Increase the separation between the equipment and receiver.
- Connect the equipment into an outlet on a circuit different from that to which the receiver is connected.
- Consult the dealer or an experienced radio/TV technician for help.