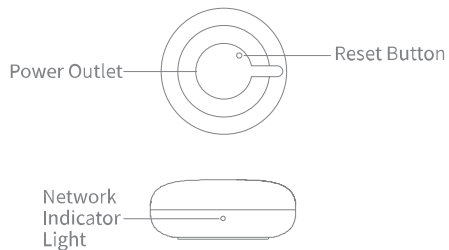


Smart Controller User Manual

01 Product Introduction

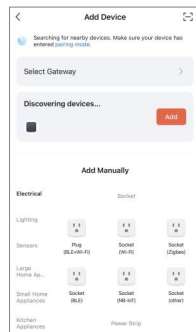
Users can design and achieve intelligent application scenes for common appliances with Smart controller.



Inspected

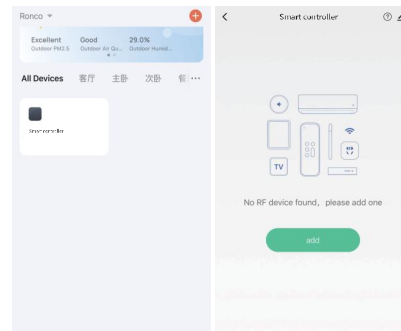
02 Adding Smart Controller

1. Tap Add Device or the plus "+" icon in the top right corner on the Home page.
2. Hold the Reset button at least 5s until the indicator light flashes. Then add the device as indicates.
3. The added device is displayed on the Home page.

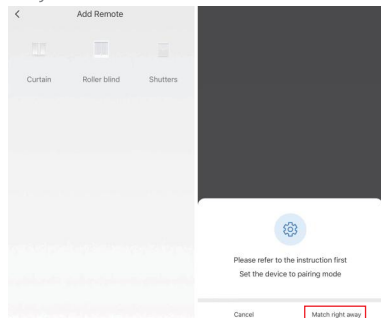


03 Adding sub-device

1. Tap the "Smart controller" on the Home page to add other devices.

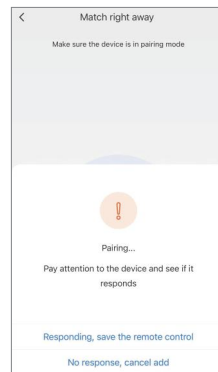


2. Select the device type you want to add from the list.
3. Press the motor's **PROG** for 2s, motor jogs once, motor is in pairing mode. Tap "Match right away".



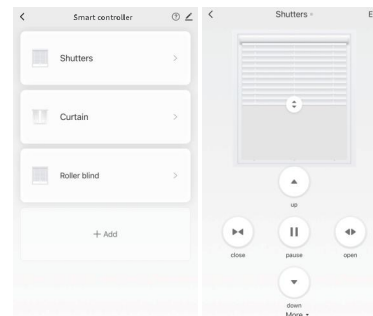
4. Pay attention to the device and see if it responds.

Note: Motor will response by jogs.



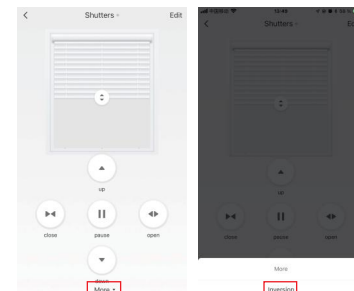
5. Adding done, the sub-device (Shutters) is displayed on the Home page.

Note: If to share the device with others, you can add members via "Me" - "Home Management" - "Create a home" or "Join a home".



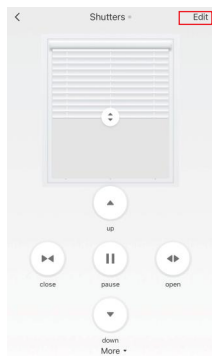
04 Inversion

1. Tap "Up" or "Down" to confirm the rotation direction. Tap "More" if the direction does not match the control.
2. Tap "Inversion", motor jogs once.

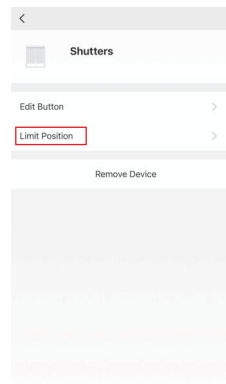


05 Limits setting

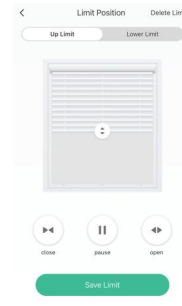
1. Tap "Edit"



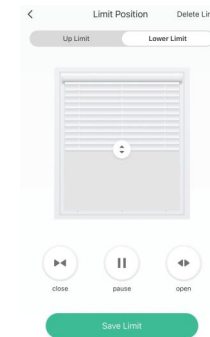
2. Tap "Limit Position"



3. Choose "Up limit", tap "open" or "close" to the desired Up limit position, then "pause", tap "Save limit", the Up limit setting done. Motor runs downwards automatically, tap "pause" when it reaches the desired Lower limit position.

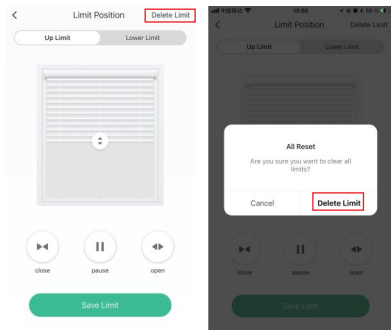


4. Choose "Lower limit", tap "Save limit", motor jogs once. The Lower limit setting done. Limits setting done.



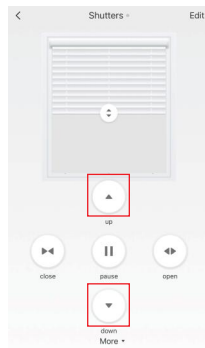
06 Delete Limit

1. Tap "Delete Limit", confirm "Delete Limit", motor jogs once, all the limits deleted.



07 Tilt

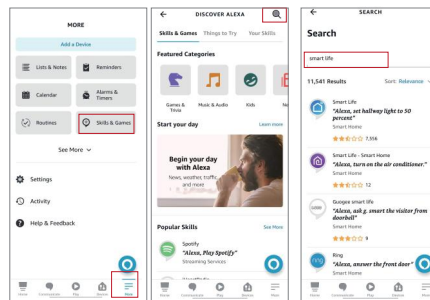
1. Tap "up" or "down", motor adjusts slats accordingly.



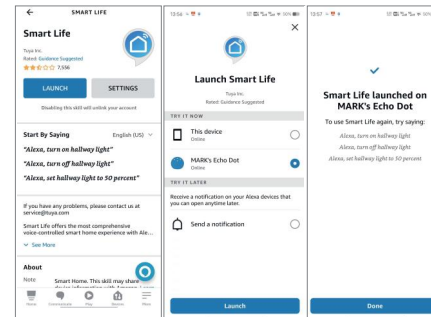
08 Binding Alexa

Bind the Smart Life account to "Alexa"

1. Tap "More", choose "Skills & Games", then search for "Smart Life".



2. Tap "Launch", choose the Alexa device.



09 Product specification

Name: Smart Controller
Product model:RE500
Power input: DC 5V/1A
RF frequency: 433.92 MHz
Operating temperature: -10°C~+45°C
Working humidity : 10%~90%RH
(non-condensing)
Wireless connections:Wi-Fi, Bluetooth

10 Basic Information

The product uses a certified WiFi Bluetooth module,FCCID:2ANDL-CBU,and approvedate: 2020.12.31,uses an 8-bit MCU, and a radio frequency chip used to transmit radio frequency data, The operating frequency is 433.92MHZ。

11 Legal Information

FCC ID:2A3UM-RE500
FCC Compliance Statement
This device complies with part 15 of the FCC Rules. Operation is subject to the following two conditions:
(1) This device may not cause harmful interference, and
(2) this device must accept any interference received, including interference that may cause undesired operation.
This equipment has been tested and found to comply with the limits for a Class B digital device, pursuant to Part 15 of the FCC Rules. These limits are designed to provide reasonable protection against

harmful interference in a residential installation. This equipment generates, uses and can radiate radio frequency energy and, if not installed and used in accordance with the instructions, may cause harmful interference to radio communications. However, there is no guarantee that interference will not occur in a particular installation. If this equipment does cause harmful interference to radio or television reception, which can be determined by turning the equipment off and on, the user is encouraged to try to correct the interference by one or more of the following measures:
Reorient or relocate the receiving antenna.
Increase the separation between the equipment and receiver.

<p>Connect the equipment into an outlet on a circuit different from that to which the receiver is connected. Consult the dealer or an experienced radio/TV technician for help.</p> <p>FCC Caution:</p> <p>Any Changes or modifications not expressly approved by the party responsible for compliance could void the user's authority to operate the equipment.</p> <p>FCC RF EXPOSURE STATEMENT:</p> <p>This equipment should be installed and operated with minimum distance 20cm between the radiator & your body.</p> <p>Contains Transmitter module FCC ID: 2ANDL-CBU</p>	<p>IC:30162-RE500</p> <p>Innovation, Science and Economic Development (ISED) Canada Compliance Statement</p> <p>CAN ICES - 3 (B)/NMB - 3 (B)</p> <p>This device complies with Innovation, Science, and Economic Development 7 Canada licence-exempt RSS standard(s). Operation is subject to the following two conditions:</p> <p>(1) This device may not cause interference, and</p> <p>(2) This device must accept any interference, including interference that may cause undesired operation of the device.</p> <p>Le présent appareil est conforme aux CNR</p>	<p>d' Innovation, Science et Développement économique Canada applicables aux appareils radio exempts de licence. L'exploitation est autorisée aux deux conditions suivantes:</p> <p>(1) l'appareil ne doit pas produire de brouillage, et</p> <p>(2) l'utilisateur de l'appareil doit accepter tout brouillage radioélectrique subi, même si le brouillage est susceptible d'en compromettre le fonctionnement.</p> <p>Radiation Exposure Statement</p> <p>This equipment complies with RSS - 102 radiation exposure limits set forth for an uncontrolled environment.</p> <p>This equipment should be installed and operated</p>	<p>with minimum distance 20 cmbetween the radiator and your body.</p> <p>Pour se conformer aux exigences de conformité CNR 102 RF exposition, une distance de séparation d'au moins 20 cm doit être maintenue entre l'antenne de cet appareil ettoutes les personnes.</p> <p>Contains Transmitter module IC: 23243-CBU Contient le module d' émission IC : 23243-CBU</p>
---	---	--	--