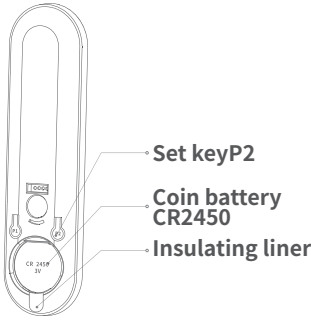
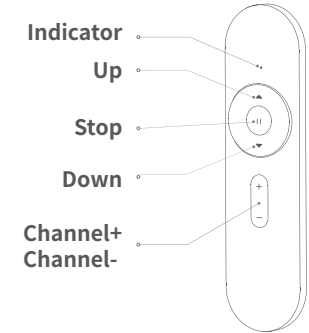


RE300 Emitter User Manual

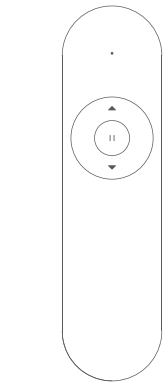
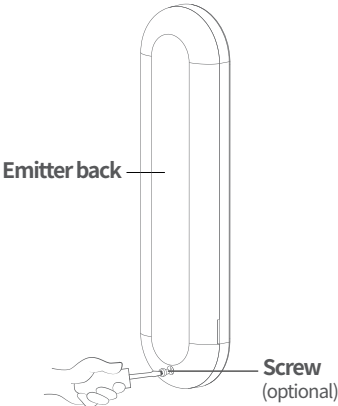
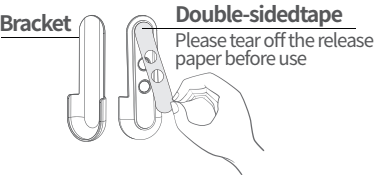
Please read this Manual carefully before using the product and keep it properly for future reference.

01 Product description

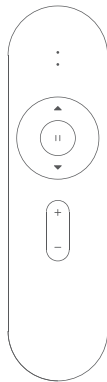
Package containing:  
Emitter\*1,Bracket\*1, User Manual\*1,  
Screw\*1



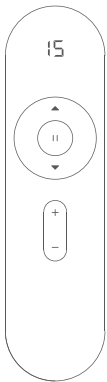
Attention: Remove the battery insulation before use



RE301  
Single-Channel emitter



RE302  
2 Channel emitter



RE315  
15 Channel emitter

02 Technical parameters

Product name: Wireless emitter

Product model:RE301 RE302  
RE315

Product size:130\*37\*15mm

Input voltage:3.0V

Transmission distance:  
Exterior conditions>150m  
Interior conditions>35m

Operating frequency:433.92MHz

Working temperature:-10°C~55°C

Working humidity:  
10%~90%RH,no condensing

03 Features

- 1.RE315 The displayed number is the chosen channel
- 2.RE302 The indicator light is the chosen channel

3.RE315 LCD Version channel lock operation(example:if the emitter only needs 4 channels, then lock the 4th channel, the emitter will be able to use channels from 0 to 4): Switch the screen number to 4th channel, press+and-simultaneously to let the number on the screen flashes 3 times, then release to finish the setting.Repeating this operation is also for canceling the channel lock function.

4.RE302: All indicator lights on means group control channel.

5.RE315:0 channel is group control channel.

6. Group control channel:Take RE302 as an example,group control can control all the paired motors in 1,2 channels.

04 Operation step

Keystroke	Time	Description
▲ + ▼	Long press 2 seconds	feature settings
▲ + ▼	Once	Pairing
⏮	Long press 2 seconds	Switch direction/ setting confirmation
▲ + ⏮	Long press 2 seconds	Speed regulation+
▼ + ⏮	Long press 2 seconds	Speed regulation-

Remarks: Please follow up with motor instruction manual.

05 Warnings and precautions ⚠

1.For fear of shortening the life of the emitter, please avoid dampness and bumps in use. If the emitter range shortens or the emitter becomes insensitive, please replace the old battery with battery of the same model and recycle the replaced battery.

2.Please do not use battery of different types for fear of explosion.

06 Legal Information

FCC ID:2A3UM-RE315  
FCC Compliance Statement

This device complies with part 15 of the FCC Rules. Operation is subject to the following two conditions:

- (1) This device may not cause harmful interference, and
- (2) this device must accept any interference received, including interference that may cause undesired operation.

This equipment has been tested and found to comply with the limits for a Class B digital device, pursuant to Part 15 of the FCC Rules. These limits are designed to provide reasonable protection against harmful interference in a residential installation. This equipment generates, uses and can

radiate radio frequency energy and, if not installed and used in accordance with the instructions, may cause harmful interference to radio communications. However, there is no guarantee that interference will not occur in a particular installation. If this equipment does cause harmful interference to radio or television reception, which can be determined by turning the equipment off and on,the user is encouraged to try to correct the interference by one or more of the following measures:Reorient or relocate the receiving antenna.Increase the separation between the equipment and receiver.

Connect the equipment into an outlet on a circuit different from that to which the receiver is connected. Consult the dealer or an experienced radio/TV technician for help.

**FCC Caution:**  
Any Changes or modifications not

expressly approved by the party responsible for compliance could void the user's authority to operate the equipment.

IC:30162-RE315  
Innovation, Science and Economic Development (ISED) Canada  
Compliance Statement

CAN ICES - 3 (B)/NMB - 3 (B)  
This device complies with Innovation, Science, and Economic Development 7 Canada licence-exempt RSS standard(s). Operation is subject to the following two conditions:

- (1) This device may not cause interference, and
- (2) This device must accept any interference, including interference that may cause undesired operation of the device.

Le présent appareil est conforme aux CNR d' Innovation, Science et Développement économique Canada applicables aux appareils radio exempts de licence. L'exploitation est autorisée aux deux conditions suivantes:

- (1) l'appareil ne doit pas produire de brouillage, et
- (2) l'utilisateur de l'appareil doit accepter tout brouillage radioélectrique subi, même si le brouillage est susceptible d'en compromettre le fonctionnement.

07 The warranty type

Type	Content	Warranty time
The whole machine	Remote control	2years

