

Wireless Lavalier Microphone

Lightning receiver

User Manual



US: us_supportcare@163.com

UK: uk_support@126.com

DE: de_support@163.com

MADE IN CHINA

Packaging List

Microphone Transmitter *1

Receiver *1

USB Type-C Charging Cable *1

Extra Clip*1

Extra Microphone Windscreen *2

Storage Bag *1

User Manual *1



Microphone
Transmitter *1



Receiver *1



Extra Microphone
Windscreen *2



Extra Clip*1



USB Type-C
Charging Cable *1

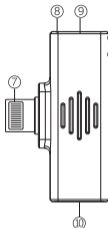
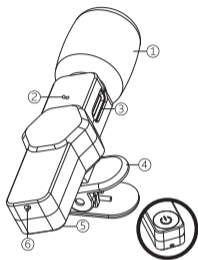


User Manual *1



Storage Bag *1

Product Overview



- | | |
|---|---|
| ① Microphone Windscreen | ⑦ Port to Connect iPhone/iPad |
| ② Microphone Indicator | ⑧ Receiver Indicator |
| ③ Microphone Charging Port | ⑨ Receiver Reset Pin Hole [Pin is required] |
| ④ Microphone Clip | ⑩ Port of Receiver |
| ⑤ Power Button | |
| ⑥ Microphone Reset Pin Hole [Pin is required] | |

Pairing

Step 1:

Receiver: Plug in the iPhone/iPad
(The RED light should be on.)

Step 2:

Microphone Transmitter: Press the power button
(The GREEN light should be on.)

All set and have fun!



Plug



Press



Connected

Power off/Disconnect

Microphone Transmitter

Long press the power button for around 5 seconds to turn off. If there is no connectivity, it will shut down after 3 minutes.

Receiver

Plug off the device (light off)

Note:

Press the power button of microphone transmitter once to pause (The BLUE light should be on.)
The product does not support to make phone calls.

Charging

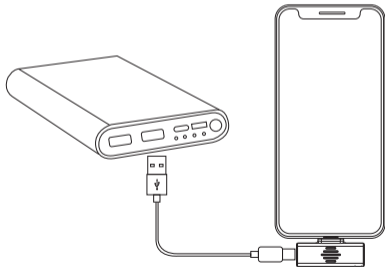
Microphone Transmitter

Charging - Blue LED Light on

Fully Charged - LED Light off

Note:

While recording, your iPhone/iPad could still be charged via the Lightning port.



Plug into the port of receiver

Reset

Kindly take the following steps if the microphone transmitter fails to pair with the receiver.

Step 1:

Plug the receiver in the iPhone/iPad and use the pin to poke the reset pin hole of receiver twice.
(The RED light should be blinking.)

Step 2:

Turn on the microphone transmitter and use the pin to poke the microphone reset pin hole twice.
(The GREEN light should be blinking.)

After the second step, the transmitter and receiver are paired again.
The LED light on both devices will stop blinking.

This device complies with Part 15 of the FCC Rules. Operation is subject to the following two conditions: (1) this device may not cause harmful interference, and (2) this device must accept any interference received, including interference that may cause undesired operation

NOTE: This equipment has been tested and found to comply with the limits for a Class B digital device, pursuant to Part 15 of the FCC Rules. These limits are designed to provide reasonable protection against harmful interference in a residential installation. This equipment generates, uses and can radiate radio frequency energy and, if not installed and used in accordance with the instructions, may cause harmful interference to radio communications. However, there is no guarantee that interference will not occur in a particular installation.

If this equipment does cause harmful interference to radio or television reception, which can be determined by turning the equipment off and on, the user is encouraged to try to correct the interference by one or more of the following measures:

- Reorient or relocate the receiving antenna.
- Increase the separation between the equipment and receiver.
- Connect the equipment into an outlet on a circuit different from that to which the receiver is connected.
- Consult the dealer or an experienced radio/TV technician for help.

Warning: changes or modifications not expressly approved by the party responsible for compliance could void the user's authority to operate the equipment