



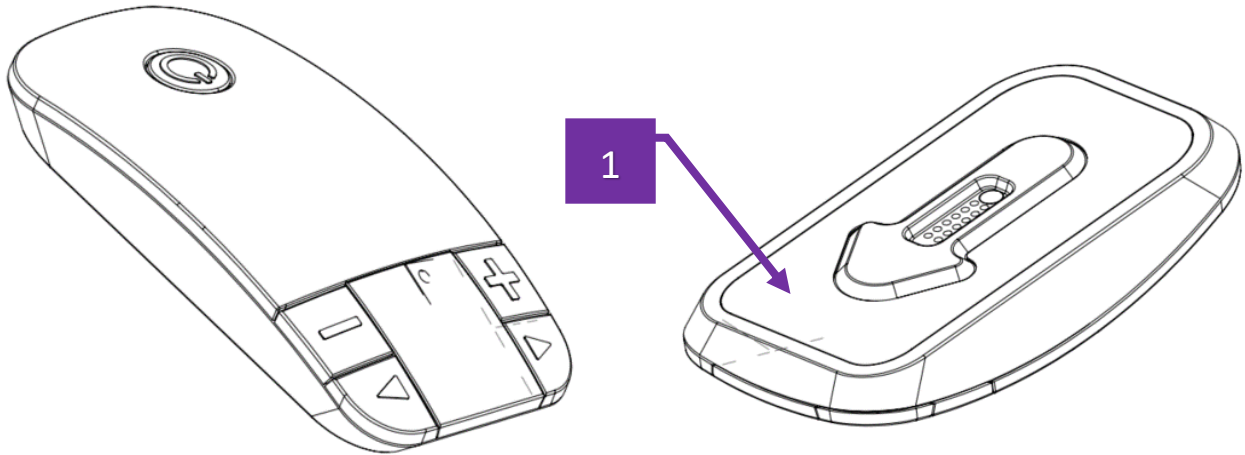
**EBT Medical, Inc.**  
34 Hayden Rowe, Suite 154  
Hopkinton, Massachusetts 01748  
[www.ebtmedical.com](http://www.ebtmedical.com)

## ID Label and Location

Figure 1 is a detailed image of the label for the Nina pulse generator. See Appendix A for the complete label specification. Figure 2 represents the location that the label will be placed on the bottom of the Nina pulse generator.



Figure 1 – Detailed image of the Label with FCC ID number on it. Variable data is shown in pink. Label to be either primarily White or Purple.



*Figure 2 – Diagram of the Nina pulse generator. Location of the label on the device identified by location 1.*



**EBT Medical, Inc.**

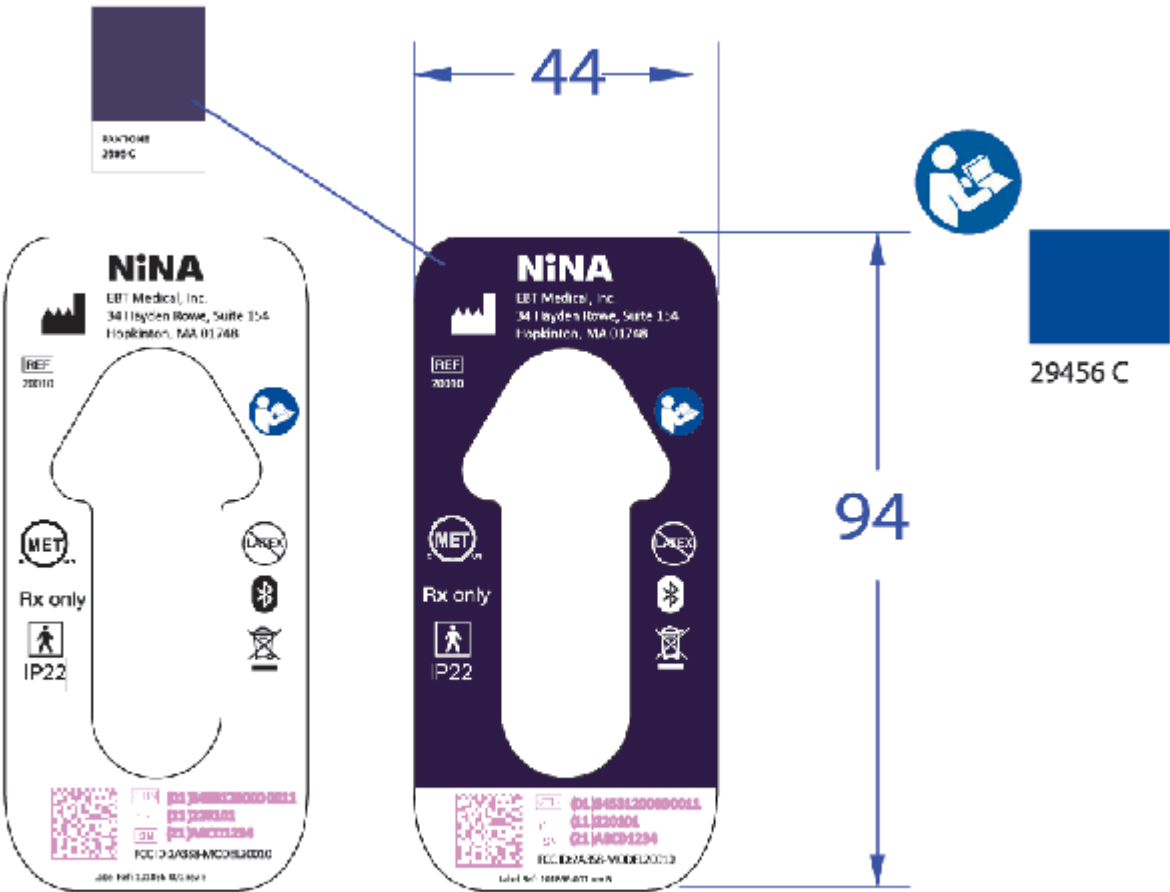
34 Hayden Rowe, Suite 154  
Hopkinton, Massachusetts 01748  
[www.ebtmedical.com](http://www.ebtmedical.com)

## **Appendix A**

The following attachment is the label specification.

PART NUMBER	DESCRIPTION
101866-001	EBT - PG Label

REVISIONS					
REV.	DESCRIPTION	ECN	DATE	DRAWN	CHECKED
A	INITIAL RELEASE	CO-22509	9/16/2021	CN	SK
B	ARTWORK UPDATE	CO-23204	11/24/2021	CN	SK
C	ADDED FCC INFO, UPDATED NOTES, ADDED PANTONE CALLOUTS	CO-23257	12/9/2021	CN	NC
C1	ADDED ARROW CUT OUT NOTE	CO-23525	1/17/2022	CN	PC
D	UPDATED FCC ID TO ALL CAPS	CO-24001	3/14/2022	CN	PC



NOTES:

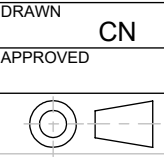
- VARIABLE DATA TO BE PRINTED BY NEXTERN USING RIBBON D102840-001
- LABEL MATERIAL WHITE PET / PERM / 55 THERMAL IMPRINT LAMINATE
- MUST PASS 60601 CLEANING AND DURABILITY TESTS
- SHALL BE REMOVABLE ONLY WITH A TOOL OR BY APPRECIABLE FORCE
- CLEANING TEST:  
MARKINGS RUBBED BY HAND, FIRST FOR 15 SEC. WITH A CLOTH RAG SOAKED WITH DISTILLED WATER, THEN FOR 15 SEC. WITH A CLOTH RAG SOAKED WITH ETHANOL 96%, AND THEN FOR 15 SEC. WITH A CLOTH RAG SOAKED WITH ISOPROPYL ALCOHOL.
- ADHESIVE LABELS ARE NOT TO HAVE WORKED LOOSE OR BECOME CURLED AT THE EDGES AFTER CLEANING.
- MARKINGS TO BE SUFFICIENTLY DURABLE TO REMAIN CLEARLY LEGIBLE.
- IMAGES SHOWN FOR REFERENCE ONLY. SEE ARTWORK FILE "101866-001 03\_14\_22.AI" FOR ARTWORK DEFINITION.
- CENTER ARROW SHAPE TO BE CUT OUT SUCH THAT IT IS REMOVABLE.

VARIABLES DATA SHOWN PINK



**NOTICE OF PROPRIETARY INFORMATION:**  
ALL INFORMATION CONTAINED HEREIN IS THE PROPRIETARY PROPERTY OF NEXTERN INC. WHEN FURNISHED WITH A PROPOSAL, THE RECIPIENT SHALL USE IT SOLELY TO EVALUATE THE PROPOSAL. WHEN FURNISHED TO A CUSTOMER, IT SHALL BE USED SOLELY FOR PURPOSES OF INSPECTION, INSTALLATION, OR MAINTENANCE. WHEN FURNISHED TO A SUPPLIER, IT SHALL BE USED SOLELY IN THE PERFORMANCE OF THE WORK CONTRACTED FOR OR BY NEXTERN INC. THE INFORMATION SHALL NOT BE USED OR DISCLOSED BY THE RECIPIENT FOR ANY OTHER PURPOSE WHATSOEVER.  
[www.nextern.com](http://www.nextern.com)

ALL DIMENSIONS IN MM.  
TOLERANCE, EXCEPT AS NOTED:  
X.X = ±0.4MM  
X.XX = ±0.2MM  
X.XXX = ±0.1MM  
ANGLE= ±0.5°



DRAWN	CN	DATE	9/15/2021
APPROVED		DATE	
SIZE	B	SCALE	NONE

DESCRIPTION				EBT - PG Label		
DOCUMENT NUMBER		REV	SHEET			
101866-001		D	1 OF 1			