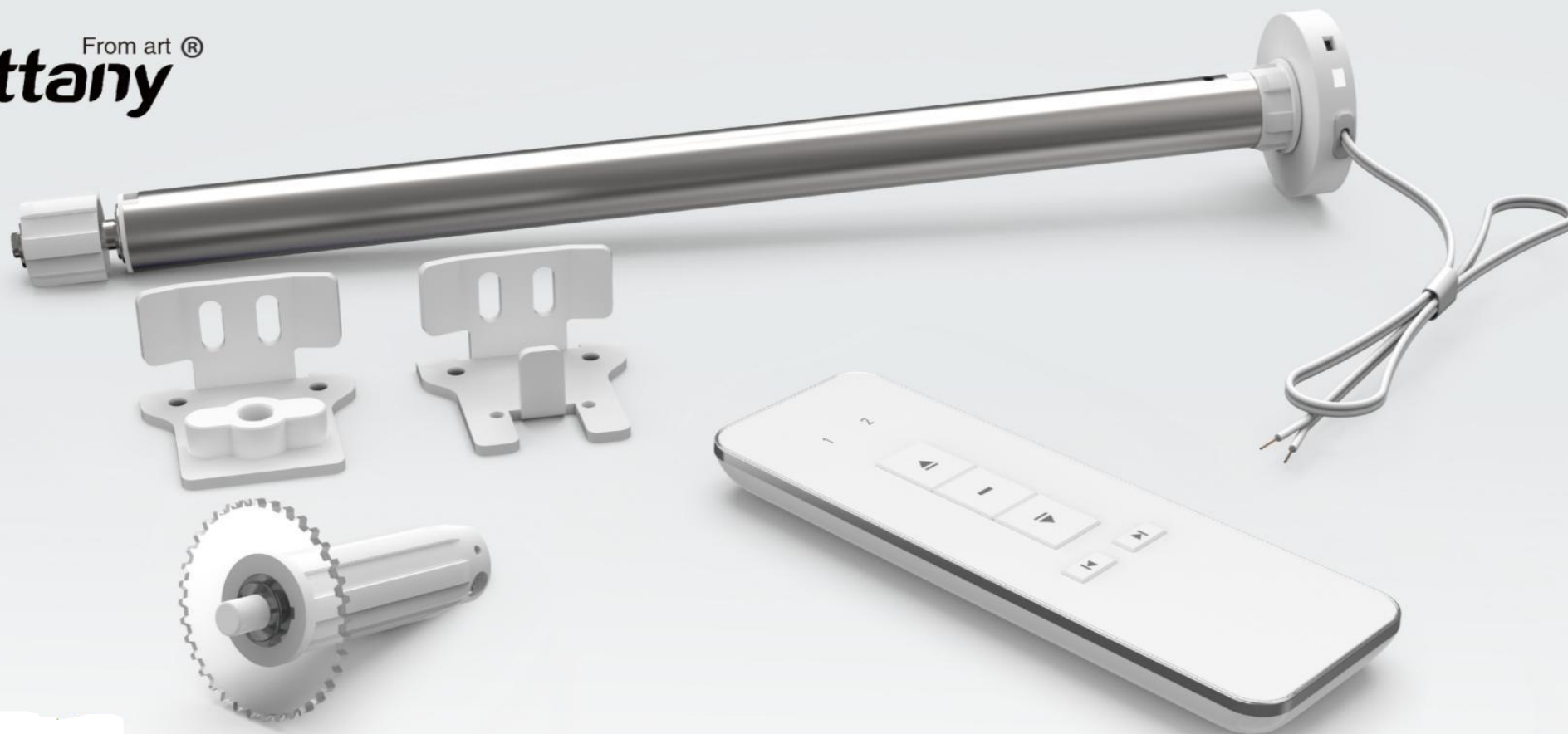


Brittany From art[®]



Model

Rated Torque
(N.m)

Rated Speed
(rpm)

Rated Power
(W)

Input Voltage

Maximum Running Time

Working temperature

BM1517WB

0.3

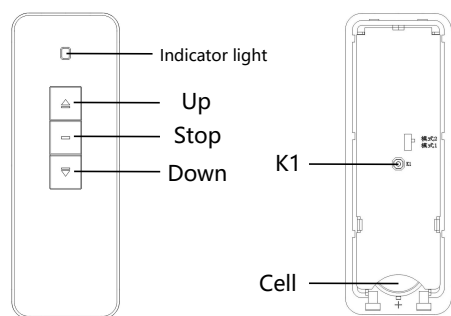
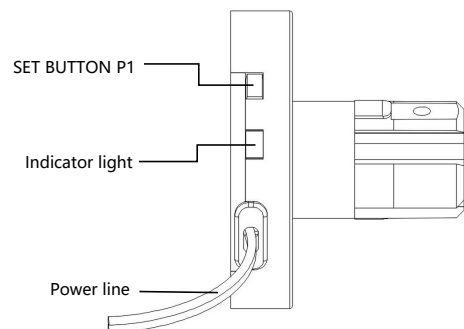
25 | 30 | 35

5

8V 1A

6 min

-10°C ~ +55°C



15 Wireless Control Tubular Motor BM1512WB

Direction

1. Match code(power on)

Press 'K1+K1+UP' and 'K1+K1+DOWN' within 10s after power up, if the connection is successful the motor will turn.

2. Match code

press the set button for 2s, wait for the motor turn prompt once, press ' P2+P2' , if the connection is successful the motor will turn as a prompt.

3. Set journey point

Use the transmitter sends the signal 'K1+UP+K1' to make the motor enter the travel setting state, press 'stop' five times quickly when the motor run to a right position, complete the journey point 1 setup, then run motor to next proper position, press 'stop' five times quickly again,complete the journey point 2 setup, complete all journey point setup.

4. Delete journey point

Use the transmitter sends the signal 'K1+DOWN+K1' , clear the journey point.

5. Change run direction

Press P1 for 10s, loosen the button after the motor turn prompt three times, run direction changed.

6. Factory reset

Press the set button P1 for 15 seconds, the motor will roll 4 times as a prompt, factory reset complete.

7. Adjust speed

Use the transmitter sends the signal 'K1+UP+UP' , the speed will increase by one level.

Use the transmitter sends the signal 'K1+DOWN+DOWN' , the speed will reduce by one level.

(there are total 3 levels speed: Lv1:25rpm, Lv2:30rpm, Lv3:35rpm)

FCC Caution.

- This device complies with part 15 of the FCC Rules. Operation is subject to the following two conditions: (1) This device may not cause harmful interference, and (2) this device must accept any interference received, including interference that may cause undesired operation.
- Any Changes or modifications not expressly approved by the party responsible for compliance could void the user's authority to operate the equipment.
- Note: This equipment has been tested and found to comply with the limits for a Class B digital device, pursuant to part 15 of the FCC Rules. These limits are designed to provide reasonable protection against harmful interference in a residential installation. This equipment generates uses and can radiate radio frequency energy and, if not installed and used in accordance with the instructions, may cause harmful interference to radio communications. However, there is no guarantee that interference will not occur in a particular installation. If this equipment does cause harmful interference to radio or television reception, which can be determined by turning the equipment off and on, the user is encouraged to try to correct the interference by one or more of the following measures:
 - -Reorient or relocate the receiving antenna.
 - -Increase the separation between the equipment and receiver.
 - -Connect the equipment into an outlet on a circuit different from that to which the receiver is connected.
 - -Consult the dealer or an experienced radio/TV technician for help.
- *RF warning for Portable device:
 - The device has been evaluated to meet general RF exposure requirement. The device can be used in portable exposure condition without restriction.