

User Manual  
TXCRCHRGEAR-FB

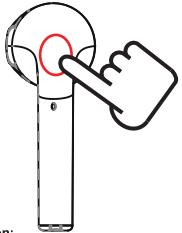
(Fold Inward) - - - - ▶

(Back Cover)

(Front Cover)

Controlling Volume & Playback

- Press the **[Multi]** button on the earbud to pause and resume audio playback.
- Press + hold** the **[Multi]** button to skip to the **next** track.
- 2x Press** the **[Multi]** button to **increase volume**.



**[Multi] Button:**  
**1x Press:** Pause/resume  
**2x Press:** Increase volume  
**Press + hold:** Next track  
**1x Press:** Answer/end call  
**Press + hold:** Reject incoming call  
**3x Press:** Wake voice assistant  
**4x Press:** Redial last outgoing number

Phone Calls

- Press the **[Multi]** button on the earbud to **answer** an incoming phone call. Press again to **end** the phone call.
- Press + hold** the **[Multi]** button on either earbud to reject an incoming phone call.
- 4x Press** the **[Multi]** button to dial the last outgoing number.

Activating Voice Assistant

If you have a voice assistant on your paired device, you can activate it using the controls on the earbud or the controls on your device.

- 3x press** the earbud's **[Multi]** button to **activate** the voice assistant.

Compliance Information

**FCC Information**  
This device complies with Part 15 of the FCC Rules.

**Caution:** Any changes or modifications not expressly approved could void the user's authority to operate the equipment.

**Note:** This equipment has been tested and found to comply with the limits for a Class B digital device, pursuant to part 15 of the FCC Rules. These limits are designed to provide reasonable protection against harmful interference in a residential installation. This equipment generates, uses and can radiate radio frequency energy and, if not installed and used in accordance with the instructions, may cause harmful interference to radio communications. However, there is no guarantee that interference will not occur in a particular installation. If this equipment does cause harmful interference to radio or television reception, which can be determined by turning the equipment off and on, the user is encouraged to try to correct the interference by one or more of the following measures:

- Reorient or relocate the receiving antenna.
- Increase the separation between the equipment and receiver.
- Connect the equipment into an outlet on a circuit different from that to which the receiver is connected.
- Consult the dealer or an experienced radio/TV technician for help.

This device complies with Part 15 of the FCC Rules. Operation is subject to the following two conditions: (1) This device may not cause harmful interference, and (2) this device must accept any interference received, including interference that may cause undesired operation.

**Radiation Exposure Information**  
The device has been evaluated to meet general RF exposure requirement. The device can be used in portable exposure condition without restriction.

**WARNING Li-Ion Battery Inside**  
This product is fitted with a Li-Ion battery. Do not damage, open, or dismantle the battery and do not use it in damp and/or corrosive conditions. Use only with compatible chargers. Never dispose of batteries in a fire, and never expose them to high temperatures. Do not expose the product to temperatures exceeding 60°C (140°F).

**Rating Label Definitions**

- Direct current symbol.
- This symbol signifies the product must not be discarded as household waste, and should be delivered to an appropriate collection facility for recycling. Proper disposal and recycling helps protect natural resources, human health and the environment.
- This symbol signifies and declares that this equipment has battery charging which complies with California CEC and energy efficiency.
- This symbol signifies that this is a wireless device powered by Bluetooth® technology.
- This symbol represents FCC Declaration of Conformity and compliance.

Warranty Information

**90-Day Limited Warranty**  
Territory: United States/Canada

**LIMITED WARRANTY TO ORIGINAL CONSUMER**  
This product as supplied and distributed new by an authorized retailer is warranted by Southern Telecom, Inc. to the original consumer purchaser against defects in materials and workmanship ("Warranty") as follows:

**To obtain warranty service:**

- Visit our customer support portal: [www.customersupport123.com](http://www.customersupport123.com)
- Select the brand and model of your device
- Select "Service Request" and fill out the form to begin your inquiry
- Exchanges require dated proof of purchase from an authorized retailer

Your product will be repaired or replaced, at our option, for the same or similar model of equal value if examination by the service center determines this product is defective. Products received damaged as a result of shipping will require you to file a claim with the carrier.

**Warranty service not provided**  
This warranty does not cover damage resulting from accident, misuse, abuse, improper installation or operation, lack of reasonable care, unauthorized modification including software modifications such as the installation of custom firmware. This warranty is voided in the event any unauthorized person opens, alters or repairs this product. All products being returned to the authorized service center for repair must be suitably packaged.

NO WARRANTIES, WHETHER EXPRESS OR IMPLIED, INCLUDING, BUT NOT LIMITED TO, ANY IMPLIED WARRANTIES OF MERCHANTABILITY OR FITNESS FOR A PARTICULAR PURPOSE, OTHER THAN THOSE EXPRESSLY DESCRIBED ABOVE SHALL APPLY. DISTRIBUTOR FURTHER DISCLAIMS ALL WARRANTIES AFTER THE EXPRESS WARRANTY PERIOD STATED ABOVE. NO OTHER EXPRESS WARRANTY OR GUARANTY GIVEN BY ANY PERSON, FIRM OR ENTITY WITH RESPECT TO THE PRODUCT SHALL BE BINDING ON DISTRIBUTOR. REPAIR, REPLACEMENT OR REFUND OF THE ORIGINAL PURCHASE PRICE - AT DISTRIBUTOR'S SOLE DISCRETION - ARE THE EXCLUSIVE REMEDIES OF THE CONSUMER. IN NO EVENT WILL DISTRIBUTOR OR ITS MANUFACTURERS BE LIABLE FOR ANY INCIDENTAL, DIRECT, INDIRECT, SPECIAL, PUNITIVE OR CONSEQUENTIAL DAMAGES (SUCH AS, BUT NOT LIMITED TO, DAMAGES FOR LOSS OF PROFITS, BUSINESS, SAVINGS, DATA OR RECORDS) CAUSED BY THE USE, MISUSE OR INABILITY TO USE THE PRODUCT. EXCEPT AS STATED HEREIN, NO OTHER WARRANTIES SHALL APPLY. NOTWITHSTANDING THE FOREGOING, CONSUMER'S RECOVERY AGAINST DISTRIBUTOR SHALL NOT EXCEED THE PURCHASE PRICE OF THE PRODUCT SOLD BY DISTRIBUTOR. THIS WARRANTY SHALL NOT EXTEND TO ANYONE OTHER THAN THE ORIGINAL CONSUMER WHO PURCHASED THE PRODUCT AND IS NOT TRANSFERABLE.

Some countries, states or provinces do not allow the exclusion or limitation of incidental or consequential damages or allow limitations on warranties, so limitation or exclusions may not apply to you. This warranty gives you specific legal rights, and you may have other rights that vary from state to state or province to province. Contact your authorized retailer to determine if another warranty applies.

TRAXX

All product names, trademarks, and registered trademarks are property of their respective owners. All company, product, and service names used in this document are for identification purposes only. Use of these names, trademarks, and brands does not imply endorsement.

The Bluetooth® word mark and logos are registered trademarks owned by Bluetooth SIG, Inc., used under license.

Printed in China  
v1, 12-2021

TRAXX



Instruction Manual  
**2-in-1 USB Car Charger  
with Wireless Earpiece**  
TXCRCHRGEAR-FB

Before You Begin...

READ THIS MANUAL CAREFULLY AND SAVE FOR FUTURE REFERENCE

- ⚠Caution**  
To ensure safe and proper use, read all safety information before using the device. Only use with manufacturer-approved batteries, chargers, accessories, and supplies.
- THIS DEVICE IS NOT A TOY**, do NOT allow children or pets to use or play with this device.
  - Do not disassemble, modify, or repair the device.
  - Do not expose to extreme temperatures (heat or cold), open flames, humid, or wet conditions.
  - Do not submerge in water.**
  - Low power may cause poor Bluetooth connection or sound distortion.
  - Do not overcharge battery.
  - If using with a USB adapter, make sure the adapter is not damaged.
  - Do not allow the USB port or the connectors of the supplied USB cable to be exposed to dust or water, or to come into contact with any conductive materials such as liquids, metallic powders, etc.
  - Store only safe, dry location, away from sources of water, light, heat, and dust. The device is best stored in an airtight box or bag (not included).
  - Clean by wiping with a clean dry microfiber cloth ONLY. Do not clean with water or any sort of cleaning liquid or detergent.
  - The earbud contains built-in batteries and should not be disposed of with regular household waste. Please consult the local authorities on the correct way to dispose of this device.

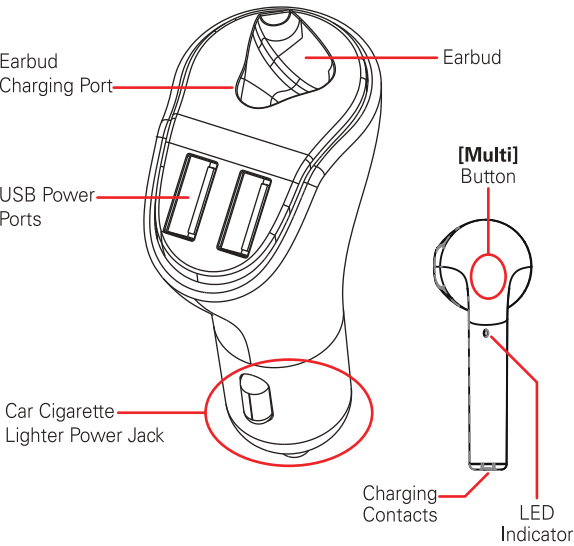
Customer Support

For any questions or problems with your product, please visit our website at [customersupport123.com](http://customersupport123.com).

In the Box

- Car Charger (x1)
- Wireless Earbud (x1)
- Instruction Manual (x1)

Location of Controls

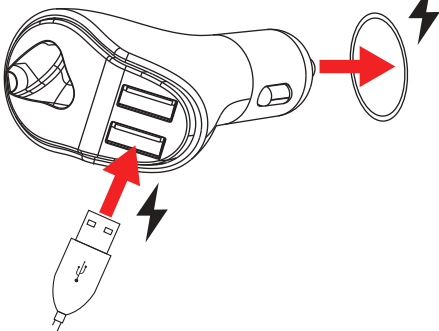


Getting Started

Plugging In

Plug the smaller end of the car charger into the cigarette lighter power port in your car.

You car may need to be started before the charger will power on.



USB Charging

Plug the USB (USB-A) connector of your USB-charging or USB-powered device (not included) into one of the two USB ports on the charger.

Your device should begin charging, or should be able to power on.

Charging the Earbud

- Plug the charger into your car's cigarette lighter power port.
- Slide the included earbud into the earbud charging port on the charger.
- The LED indicator will light up RED while charging and turn OFF when finished charging.

A tone will be heard when the earbud is low on battery. Please recharge when this happens.



Powering the Earbud On/Off

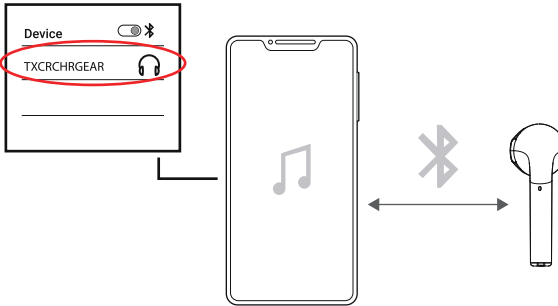
- Remove the earbud from the charger to automatically power it ON. A voice will be heard, and the earbud will enter Bluetooth pairing mode.
- Insert the earbud into the charger to automatically power it OFF.
- The earbud can also be powered OFF by **touching + holding** the **[Multi]** button for **8 seconds** (power OFF).

**Note:** The earbuds will automatically power OFF if they are not paired to a Bluetooth device after 2 minutes, or if the paired device is out of Bluetooth range (10 m / 30 ft) for 2 minutes.



Bluetooth Pairing

- Power the earbud ON. A voice will be heard indicating the earbud is in pairing mode.
- Open your device's Bluetooth menu, and search for new devices. Select **TXCRCHRGEAR** when it appears on the list of found devices.
- Another voice will be heard, indicating that the earbud is successfully connected to your device. The LED indicator on the earbud will turn OFF.



**See earbud controls on the next page.**