

# Installation Guide

## English



To avoid electric shock while installing the Receiver, please disconnect the mains voltage (switch off circuit breaker) before installation. Failure to observe the installation instructions can cause fire or other hazards. Do not attempt to service or repair the product yourself. We recommend the installation by a qualified Electrician only. Do not continue to operate the product if it becomes visibly damaged.

**\*Work on 230 V mains supply shall only be carried out by Licensed Electricians.**

## 1. Switch Technical Parameters

- **Work Type:** Reciprocating work by 86 type lever
- **Power Model:** Power generation by mechanical force
- **Work Frequency:** 433MHz
- **Number Keys:** 1, 2, 3 keys
- **Color:** White
- **Lifetime:** 100,000 times
- **Distance:** 30m(indoor), 80m(outdoor)
- **Waterproof Level:** IPX5
- **Weight:** 80g
- **Certification:** CE, ROHS, FCC
- **Dimension:** L86mm \* W86mm \* H14mm



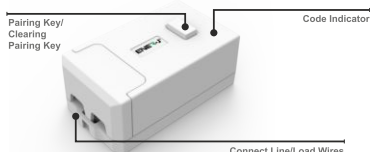
1

2

## Wireless Switch and Controller

### 2. Receiver Technical Parameters For Non Dimmable Receiver

- **Model No:** C3101R
- **Power Consumption:** <0.1W
- **Working Temperature:** -20°C - 55°C
- **Storage Capacity:** 6 switch-keys
- **Power Model:** AC 100-250V, 50/60 Hz
- **Distance:** 30m(indoor), 80m(outdoor)
- **Color:** White
- **Rated Current:** 5A/10A
- **Weight:** 64g
- **Comm:** ASK / 433MHz
- **Certification:** CE, ROHS, FCC
- **Dimension:** L76mm×W44mm×H32mm

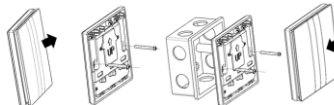


Do not place Receiver controller in metal enclosure.

**Important note:** Isolate power before connecting receiver. Failure to do so can cause electric shock, fire or other hazards.

### 6. Installation method of stainless steel fixed plate

- Open the switch panel.
- Fix the base on the wall (expansion screw sleeve is needed) or fixture.
- Fix it, install the button shell to the base shell.



### 7. Installation method of Double-sided adhesive tape

- Paste the double-side adhesive on the back of switch.
- Clean the wall or glass surface to paste the switch on it.



**Important note:** There are precision parts inside the switch. When installing, it is strictly prohibited to dismantle the panel.

4

5

### Stuck? Confused?

Technical Team:  
marshall@eco-newleaf.com  
Sales Team:  
anny@eco-newleaf.com

使用距离小于20cm的产品：使用距离（使用产品时，与人的距离）

This device complies with part 15 of the FCC Rules. Operation is subject to the following two conditions: (1) this device may not cause harmful interference, and (2) this device must accept any interference received, including interference that may cause undesired operation.

Any changes or modifications not expressly approved by the party responsible for compliance could void the user's authority to operate the equipment.

NOTE: This equipment has been tested and found to comply with the limits for a Class B digital device, pursuant to Part 15 of the FCC Rules. These limits are designed to provide reasonable protection against harmful interference in a residential installation. This equipment generates, uses and can radiate radio frequency energy and, if not installed and used in accordance with the instructions, may cause harmful interference to radio communications. However, there is no guarantee that interference will not occur in a particular installation.

If this equipment does cause harmful interference to radio or television reception, which can be determined by turning the equipment off and on, the user is encouraged to try to correct the interference by one or more of the following measures:

- Reorient or relocate the receiving antenna.
- Increase the separation between the equipment and receiver.
- Connect the equipment into an outlet on a circuit different from that to which the receiver is connected.
- Consult the dealer or an experienced radio/TV technician for help.

FCC ID: 2A3RA-S301