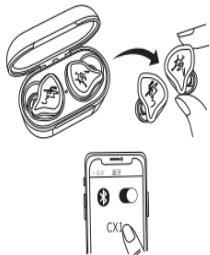
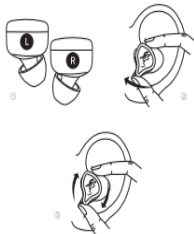


## First Quick Use



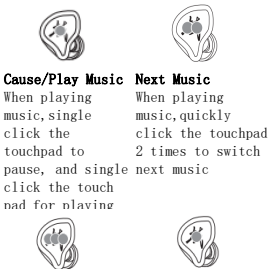
1. Take out the Left and Right Earbuds from the case, the earbuds will automatically start and pair each other.
2. Open bluetooth in your device, searching and matching "Soundseeker".
3. The earbuds will automatically match the device after first time connected when opening the charging case.
4. Make sure the device's bluetooth is On when using the earbuds, or automatically connection will fail.

## Comfortable Wearing



1. Please wear the earbuds correctly, "L" fits left ear, "R" fits right ear.
2. Put the earbuds head into the ear canal entrance, gently moving it in.
3. Slightly rotate the earbuds to get the ideal seal and comfortable audio experience.

## Operation Instruction

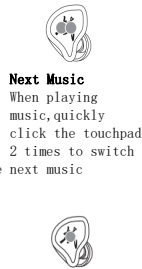


**Cause/Play Music**  
When playing music, single click the touchpad to pause, and single click the touchpad for playing

**Previous Music**  
When playing music, quickly click the touchpad 3 times to switch previous music



**Voice Control**  
Long click the touchpad for 2 seconds awaking the voice control



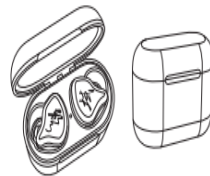
**Next Music**  
When playing music, quickly click the touchpad 2 times to switch next music

**Answer/Hang up**  
Incoming call, quick click the touchpad to answer the phone, and then quick click the touchpad to hang up the phone



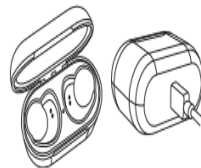
**Reject Call**  
During the call, long click the touchpad for 2 seconds to reject the call

## Earbuds Charging



1. Battery display: support both IOS/Android device.
2. Low battery alarm: when the battery in earbuds is lower than 3.4v, it flashes in every 5 seconds.
3. Power off: when the battery in earbuds is lower than 3.2v, it automatically power off.
4. Earbuds Charging: put the earbuds into the charging case and shut the cover, the earbuds charge automatically till full charge.

## Case Charging



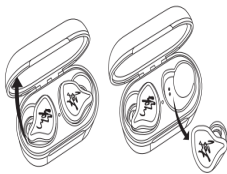
1. Charging case power display: when opening the charging case, the 4 white LEDs light up for 5 seconds to show battery percentage then off.
2. Charging case battery percentage: there are 4 white LEDs in the middle of the case to show 25% battery for each led.
3. Charging case charging status: when charging the case, the white led lights glow slowly from the bottom to the top till full charge.

## Single Earbuds Operation

## Specification

## Safety Instruction

## FAQs



1. Bluetooth Paring: Soundseeker
2. Bluetooth Version: Bluetooth V5.2
3. Bluetooth Protocol: A2DP, HSP, AVRCP, AAC, SBC, APTX-HD, aptX Classic
4. Audio Decoder: AAC, SBC, aptX, aptX-HD, aptX Classic
5. Bluetooth Range: 10 meters
6. Speaker: dynamic speak + armatured speaker
7. Microphone: Silicimide 38db±1db
8. Noise Cancelling: CVC8.0 noise cancelling
9. Switch: Hall switch
10. Earbuds play time: about 8 hours
11. Earbuds talking time: about 6 hours
12. Charging case battery life: about 80 hours
13. Earbuds battery capacity: 40mAh
14. Charging case battery capacity: 1100mAh
15. Earbuds charging time: about 2 hours
16. Charging case charging time: about 3 hours
17. Charging type: Type-c
18. Charging display: 4 white leds each led stands for 25%

1. Do not disassemble or modify the earbuds set for any reason, or the earbuds may break or destroy.
2. Keep the earbuds set away from liquid, oil, fire or other hazardous substance, or it may damage or destroy the earbuds.
3. Beware of sharp edges, angles, uneven metal surfaces, metal parts, accessories to avoid any possible damage.
4. Avoid the indicator lights to eyes of human beings or pets.
5. Do not use the earbuds set in bad environment too low or too high temperature (below -5°C or above 45°C).
6. Do not use the earbuds set in thunderstorm weathers, it may lead to abnormal operation of the equipment and increase the risk of electric shocks.
7. Please do not use the earbuds in dangerous accassions, like driving, corssing the road etc.
8. The earbuds can prevent sweat, daily water, but it's not suitable for water sports or entertainments. The charging case is not waterproof. Keep the unit dry and clean when charging.

1. The earbuds can not pair the device? Clear the bluetooth paring information in the device and switch off bluetooth, put the earbuds back to charging case, close the cover and take out, switch on the bluetooth and pair again.
2. Mobile or other device can not search bluetooth? Make sure there is no nearby bluetooth device paired the earbuds before. If yes, switch off the bluetooth, put the earbuds back the case and take out and pair again.
3. Earbuds automatically pair failure? Make sure the device bluetooth mode is on, or it can not pair automatically.
4. Paired but not sound? Pairing failed, repair again.
5. Earbuds can not power on or automatically power off? Earbuds low battery, charging the earbuds.
6. Earbuds not charging? Check the charging position or the case is running out of battery.
7. Earbuds signal bad or loss? Keep the earbuds within 10 meters from the device or away from signal interference.
8. Can not pair PC or Laptop? Make sure the PC or laptop has bluetooth
9. Can not transmit ACC? Apple devices default ACC transmission, Android devices version above 10
10. Can not transmit Aptx? Make sure the device itself supports aptX

1. Seamlessly switch from the Left earbuds to the Right earbuds or the Right earbuds to the Left earbuds when connected bluetooth.
2. Open the charging case, the Left and Right earbuds pairing each other automatically.
3. Choose a single earbuds for using.
4. If you want to use both earbuds, simply put another one into your ear.

This device complies with Part 15 of the FCC Rules. Operation is subject to the following two conditions: (1) this device may not cause harmful interference, and (2) this device must accept any interference received, including interference that may cause undesired operation

NOTE: This equipment has been tested and found to comply with the limits for a Class B digital device, pursuant to Part 15 of the FCC Rules. These limits are designed to provide reasonable protection against harmful interference in a residential installation. This equipment generates, uses and can radiate radio frequency energy and, if not installed and used in accordance with the instructions, may cause harmful interference to radio communications. However, there is no guarantee that

interference will not occur in a particular installation.

If this equipment does cause harmful interference to radio or television reception, which can be determined by turning the equipment off and on, the user is encouraged to try to correct the interference by one or more of the following measures:

- Reorient or relocate the receiving antenna.
- Increase the separation between the equipment and receiver.
- Connect the equipment into an outlet on a circuit different from that to which the receiver is connected.
- Consult the dealer or an experienced radio/TV technician for help.

Warning: changes or modifications not expressly approved by the party responsible for compliance could void the user's authority to operate the equipment

The device has been evaluated to meet general RF exposure requirements, the device can be used in portable exposure conditions without restriction