

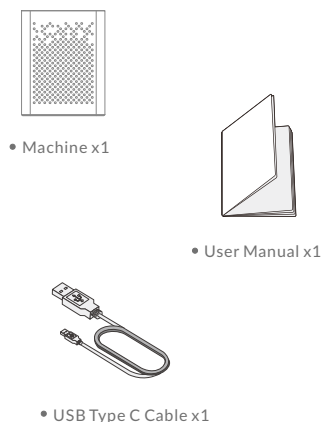
Kipcush™

Sound Machine and Bluetooth Speaker

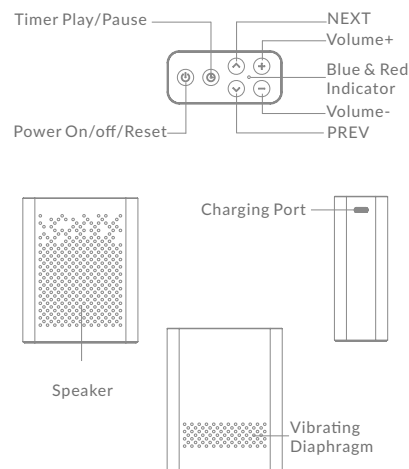


E2 User Manual

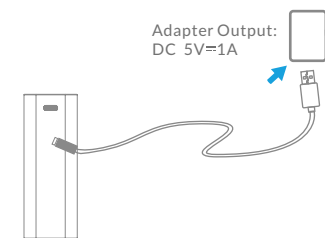
● Package Contents



● Features



● GETTING STARTED



Please note:

- 1.This machine includes a built-in 2000mAh rechargeable polymer lithium battery. Please fully charge it before first use.
- 2.When the machine is charging, the red light is always on. When the machine is fully charged, the red light goes out.
- 3.When the machine is in low battery, the red indicator will flash. please charge.

● GETTING STARTED-Sound Machine

Features 10 built-in natural sounds including: white noise, pink noise, brown noise, ocean wave, forest birds, fans, rain, water stream, and more.

● Power On/off

- 1.Press and hold the "⏻" button until E2 start playing white noise. Press and hold the "⏻" button again to turn off.
- 2.When E2 is power on and working. You can use "◀" or "▶" button to select song. use "⏮" or "⏭" button to adjust volume.

● Timers

When E2 is power on and working. You can press the "Timer" button to set a timer for 15, 30, 60, 90 or 120minutes. Turn off the timer by pressing the "Timer" button until the timing turns off.

Please note:

you must turn off the timer if you want to listen to the sounds continuously.

● GETTING STARTED-Bluetooth Speaker

● Pairing

- 1.Press and hold the "⏻" button until E2 start playing white noise. Press the "⏻" button again to enter bluetooth pairing mode. The blue indicator will flash slowly. E2 will automatically power off after 45 seconds if there is no pairing. **Please Notice:** Make sure that your E2 is in pairing mode to complete this step. Please re-enter pairing mode if should your E2 timeout.
- 2.Open the Bluetooth setting on your mobile and click "searching device". Your mobile will search for Bluetooth devices automatically. Click "E2" for connection. Blue indicator is always on after your mobile connect to E2 successfully.
- 3.You can use E2 to play your mobile's songs after the connection is successful.

- 4.You can use the same method of sound machine to use when you want to use timers, adjust volume or select song.

- Battery low voltage not included. If E2's functions are out of working, please press and hold the "⏻" button 8 seconds to reset. E2 will return work as normal.

● Safety and Warranty

- Never drop or insert any objects into openings.
- This device should not be used near water, such as bathtubs, swimming pools, faucets or basins.
- Use this device only for its intended use as described in this manual.
- Never operate this device if it has damaged cord, cable or housing.

Warranty

We strive to build our products with the highest attention to detail and craftsmanship. However, sometimes there are occurrences of defects and we understand this. As such, we are happy to offer a one-year hassle-free warranty on all our devices as we continue and strive to make amazing products. Please contact us if you have any questions regarding this.

Specifications

Model: E2	FCCID: 2AYM8-E2RX
Input: Type C, 5V=1A	Bluetooth 5.0
Battery capacity: 1000mAh	
Product Dimensions: 70×31mm	
Operation Temperature Range: -10℃ to 45℃	
Storage temperature: -30℃ to 45℃	

● FCC Statement

FCC statement

This device complies with Part 15 of the FCC rules. Operation is subject to the following two conditions:
1) this device may not cause harmful interference, and
2) this device must accept any interference received, including interference that may cause undesired operation.
Note: This equipment has been tested and found to comply with the limits for a Class B digital device, pursuant to part 15 of the FCC Rules. These limits are designed to provide reasonable protection against harmful interference in a residential installation. This equipment generates uses and can radiate radio frequency energy and, if not installed and used in accordance with the instructions, may cause harmful interference to radio communications. However, there is no guarantee that interference will not occur in particular installation. If this equipment does cause harmful interference to radio or television reception, which can be determined by turning the equipment off and on, the user is encouraged to try to correct the interference by one or more of the following measures:

- Reorient or relocate the receiving antenna.
- Increase the separation between the equipment and receiver.
- Connect the equipment into an outlet on a circuit different from that to which the receiver is connected.
- Consult the dealer or an experienced radio/TV technician for help. Changes or modifications not expressly approved by the party responsible for compliance could void the user's authority to operate the equipment.

FCC Radiation Exposure Statement

This device complies with FCC RF radiation exposure limits set forth for an uncontrolled environment. This transmitter must not be co-located or operating in conjunction with any other antenna or transmitter.

Federal Communications Commission (FCC) Statement. This device complies with part 15 of the FCC Rules. Operation is subject to the following two conditions:

- (1) This device may not cause harmful interference, and
- (2) this device must accept any interference received,

including interference that may cause undesired operation. Note: This equipment has been tested and found to comply with the limits for a Class B digital device, pursuant to part 15 of the FCC Rules. These limits are designed to provide Reasonable protection against harmful interference in a residential installation. This equipment generates, uses and can radiate radio frequency energy and, if not installed and used in accordance with the instructions, may cause harmful interference to radio communications. However, there is no guarantee that interference will not occur in a particular installation. If this equipment does cause harmful interference to radio or television reception, which can be determined by turning the equipment off and on, the user is encouraged to try to correct the interference by one or more of the following measures:

- Reorient or relocate the receiving antenna.
- Increase the separation between the equipment and receiver.
- Connect the equipment into an outlet on a circuit different from that to which the receiver is connected.
- Consult the dealer or an experienced radio/TV technician for help.

Warning: Changes or modifications made to this device not expressly approved by **SHENZHEN FUXING TECHNOLOGY CO., LTD** may void the FCC authorization to operate this device. Note: The manufacturer is not responsible for any radio or TV interference caused by unauthorized modifications to this equipment. Such modifications could void the user's authority to operate the equipment.

RF exposure statement:

The device complies with RF exposure requirements and can be installed and used without restriction.