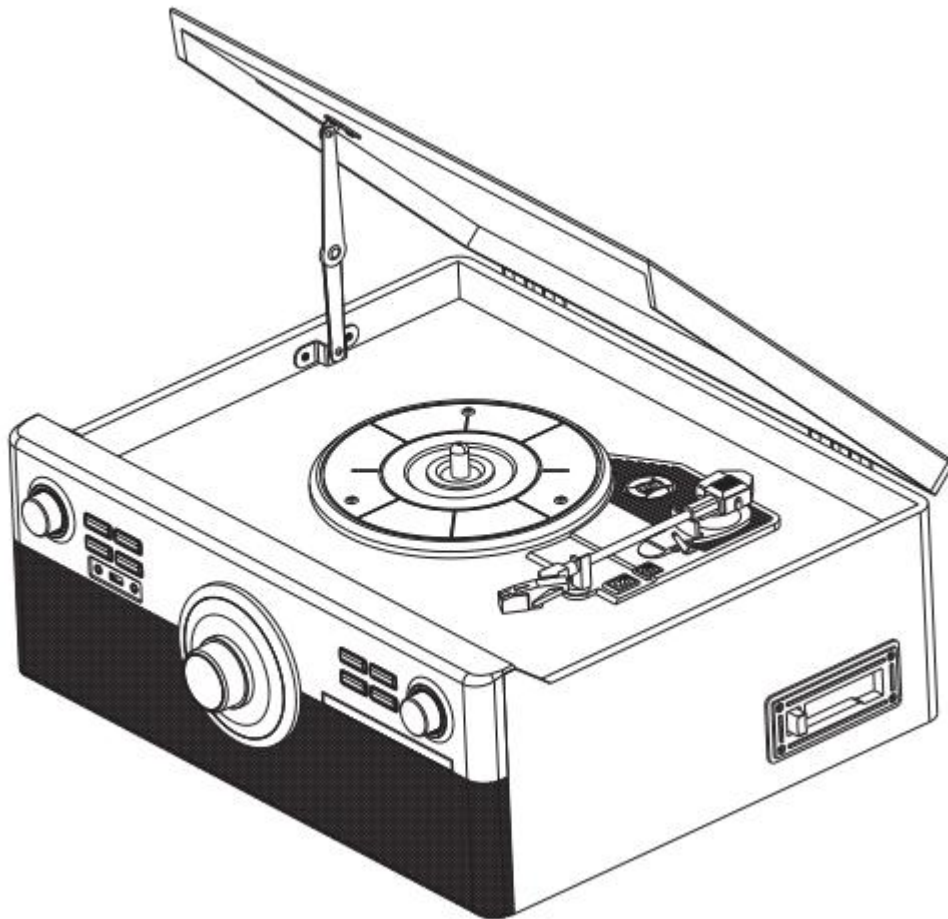


Instruction Manual

HI-FI SYSTEM ALL IN 1 PLAYER

XR-179D-99



**READ INSTRUCTIONS CAREFULLY BEFORE USE AND STORE
IN A SAFE PLACE FOR FUTURE REFERENCE**

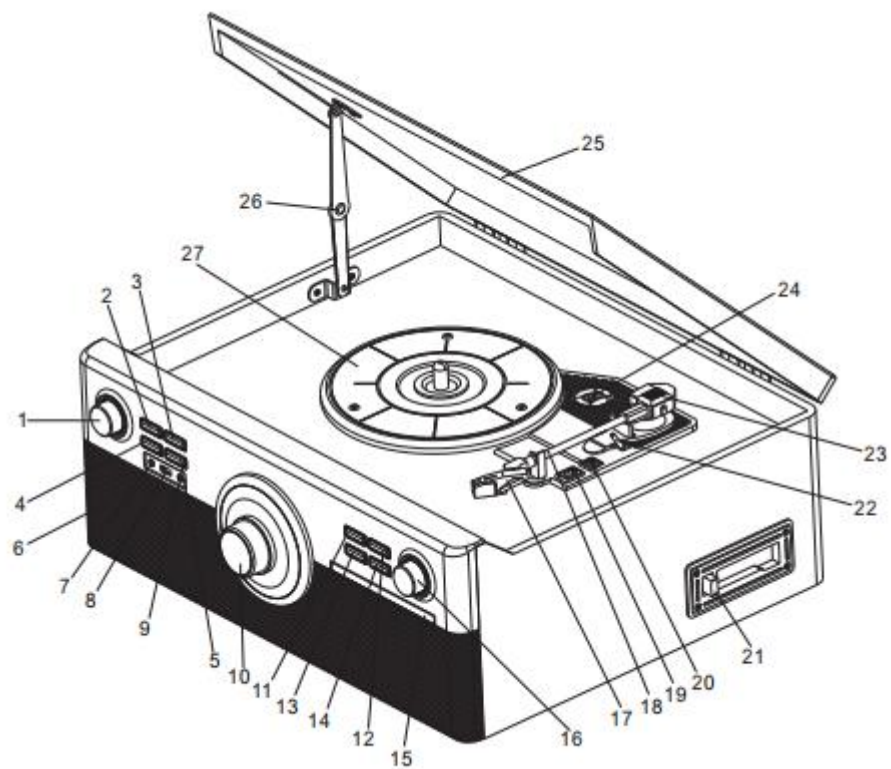
WARNING

Before usage

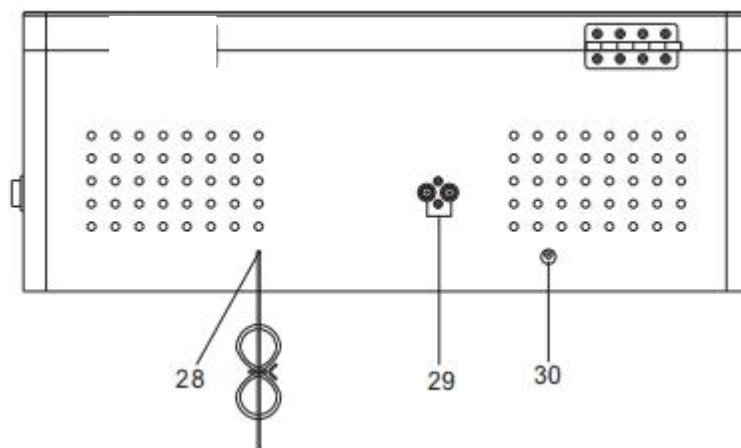
● Choose the installation location of your unit carefully. Avoid placing it in direct sunlight or close to a source of heat. Also avoid locations subject to vibrations and excessive dust, heat, cold or moisture. ● Do not install the unit in an inclined position, it is designed to be operated in a horizontal position only. ● If the unit is brought directly from a cold to a warm location, moisture may condense inside the player, and cause damage it. When you first install the unit, or when you move it from a cold to a warm location, wait for 30 minutes before operating the unit. ● The ventilation holes should not be covered. Make sure there is enough space above and beside the amplifier/receiver. ● Do not place a CD player or other equipment on top of the device. ● Do not open the cabinet. This might cause a damage to circuitry or electrical shock. ● If you are not going to use the player for long time, be sure do disconnect the player from the AC power source. When removing the power plug, never yank the cord. ● To prevent fire or shock hazard, disconnect your unit from the AC-power source when cleaning. Use caution when cleaning and wiping the plastic parts. Do not attempt to clean the unit with the chemical solvents as this might damage the finish.

Features

● Digitizing vinyl records/cassette/CD/BT or AUX-IN to USB ● Music playback & recording via Bluetooth ● Playback of MP3/WMA music files from USB/CD/Bluetooth devices ● Recording of MP3 music files on USB up to 32GB ● No computer/notebook required ● RCA output for connection to HiFi systems ● Record player with automatic/manual stop & 3 speeds: 33, 45, 78rpm ● Built-in stereo loudspeakers ● Built-in cassette & CD players ● Built-in FM radio ● 3.5mm AUX-IN & 3.5mm headphone jack ● High quality design with functional handling



DESCRIPTION



LOCATION OF CONTROLS

1. Standby/source
2. Stop
3. Previous/skip+
4. EQ
5. Next/skip
6. Speaker
7. Headphone jack
8. USB connector
9. AUX in jack
10. Tuner knob
11. Play/pause
12. Open
13. Repeat /PROG
14. Recorder/Delete
15. CD door
16. volume knob
17. Needle
18. Tone
19. 33/45/78 speed switch
20. Auto stop control
21. Cassette deck
22. Pause control
23. Tone arm
24. 45 adaptor
25. Cover top
26. Cover mechanism
27. Tray
28. FM antenna
29. Line out(R/L)
30. DC in jack (12v 2000A)

INITIAL SET-UP

MAINS CONNECTION

Ensure that the mains voltage of your home corresponds to the operating voltage of the unit. Your unit is ready to be connected to a mains voltage of 12V2A DC adaptor.

Connecting to headphones

Adjust the volume to an appropriate level before you put on your headphones. Plug in your 3.5mm headphone jack to the headphone socket.

AMPLIFIER CONNECTION (if required)

Whilst you can listen to your new turntable using the built in speakers you may wish to connect it to your existing Hi-Fi system. Connect the audio plugs to the Line out input on your mixer or amplifier using an RCA cable (not supplied)

- **Red plug into R channel input.**
- **White plug into L channel input.**

Stand-by function

Press the POWER button to enter instant the standby mode. The unit will enter standby mode automatically after 15 minutes when it is not playing any music. Press the POWER button (1) and it will power on again. Press any other button and the display lights up for a few seconds.

EQ setting

Press the standby /source button, the power led and volume led will be light on. Press EQ button and select EQ mode, FL RO PO JA CL will show on display.

PLAYING THE RECORDER

Press the standby/source button and turn the switch select on PHONO position.

1. Place the record of your choice on the turntable. If required, do not forget to place the adaptor on the record spindle.
2. Choose the desired playing speed using the speed selection switch between 33.3, 45 and 78 rpm.
3. Turn on the Rotary Power Switch, note that this also controls volume.
4. Release the tone arm lock.
5. Raise the arm with your hand lightly.
6. Place the stylus vertically over the first track of the record, the turntable will start turning automatically.
7. Put down the stylus slowly on to the record to play.
8. When a record comes to the end, the turntable will stop automatically if the auto-stop switch is in the ON position. If the switch is in the off position then it will keep revolving until the tone arm is returned to the tone arm rest.
9. Lift up the tone arm and put it on the rest when finished.
10. Replace the protective cap on the stylus and close the tone arm lock.

FM RADIO OPERATION

For FM there is a built-in rod antenna at the rear of the unit. Extend the antenna and move around to obtain the best reception signal.

Operation

1. press the standby /source button, the display will light up and "tu" will be shown on display.
2. turn the tuner knob to select the FM Radio.

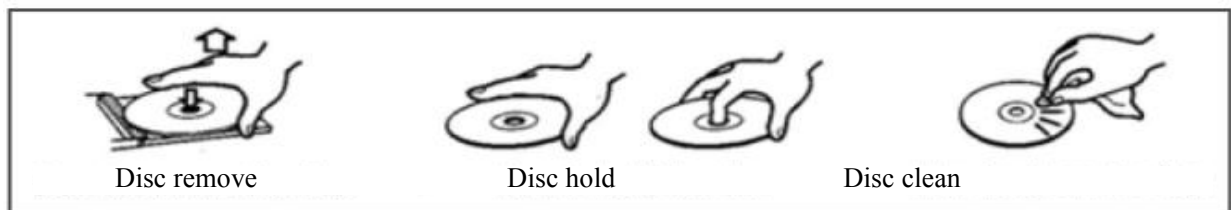
FM & FM-Stereo Reception

Stereo reception is possible when the tuned FM station is broadcasting in stereo. the stereo led will be light on.

PLAYING COMPACT DISC

Compact disc hints

- This Turntable is compatible with conventional audio CDs and properly finalized CD-R and CD-RW discs.
- Always place the disc in the disc tray with the label side facing up. (Compact discs can be played or recorded on one side only.)
- To remove the disc from its storage case, press down on the center of the case and lift the disc out, holding it carefully by the edges.
- Should the disc become dirty, wipe the surface in a circular motion from the center whole outwards with a soft, dry cloth.



- Never use chemicals such as record sprays, antistatic sprays or fluid, benzene or thinner to clean the disc. Such chemicals will do irreparable damage to the disc's plastic surface.
- Place the disc back in its case after use to avoid dust and scratches.
- Do not expose discs to direct sunlight or high temperatures for extended periods of time. Long exposure to high temperatures will warp the disc.
- Playing warped discs may damage the unit.
- Printable discs are not recommended for use with this unit as the label side may be sticky and damage the unit.
- Do not use protective coating spray on the discs.
- Do not write on discs with ball point or hard tipped pens. Only use oil-based felt tipped pens.
- Do not use stabilizers. Using commercially available CD stabilizers may cause damage to this unit.
- Do not use CD's with an irregular shape as they may damage the Unit.



To start

1. Turn the standby/source button to select "CD" mode.
2. Press "open/close" button open the CD door .
3. Place a CD with the printed side facing up inside the tray & then close the co door.
4. Focus search is performing, the first track will start playback.
5. To interrupt, press the STOP button once, the total number of tracks compare on the LED display .Press again PLAY/Pause button to resume normal playback.

Skip/search mode (skip/search up / skip/search down)

During play or pause mode, if SKIP UP button is pressed. it will go to next track and display the track no. and then remain the play or pause mode.

During play or pause mode, if SKIP DOWN button is pressed. it will go back to the beginning of the track, original track number is display and remain the play or pause mode.

After step 2, press SKIP DOWN button again will go to the previous track and remain the play or pause mode.

If press and hold the SKIP UP button/SKIP DOWN button during CD/mp3 playback, the playing track will go fast forward or backward until the button being released.

Repeat Function

During playback, press the REPEAT button once to repeat a single track. The "REP" LED indicator light will blink.

During playback, press the REPEAT button one more time to repeat all tracks. The "REP" LED indicator light will stay lit.

CD DISC PROGRAMMING

Up to 99 tacks can be programmed for mp3 (20 in CD) and play in any order. before use, be sure the system is at stop mode before programming:

1. In CD mode and stop the CD playback.
2. Press the PROG button"track number" will appear on display . Moreover, it will indicate program no. and digits for track no. to be programmed.
3. Select a desired track by pressing SKIP UP/DOWN
4. Press the PROG button to store the trace into memory.
5. Repeat steps 3 and 4 to enter additional tracks into the memory if necessary.
6. When all the desired tracks have been programmed, press PLAY/PAUSE button to play the disc in assigned order.
7. To cancel the programmed file, press STOP button .

PLAYBACK OF MP3/WMA SONG VIA USB STORAGE MEDIA

The system is able to decode and playback all MP3 /WMA file which stored in the memory media with USB connecting port

1. Turn the standby/source button to select USB mode and "ud" will be showed on the display.
2. Plug-in the USB plug with the face up & make sure it going into completely.
3. The system will start reading the storage media automatically after connecting, and the display will show the total number of MP3/WMA files
4. Repeat the same playback procedure as playing CD/mp3 disc as above.

REMARKS:

The system can detect and read the file under MP3 and WMA format only though the USB port.

If connect the system to MP3 player via the USB socket, due to variances in mp3 encoding format, some mp3 player may not be able to play via the USB socket. this is not a

mal-function of the system.

Connecting the USB upside down or backwards could damage the audio system or the storage media (USB thumb drive). Check to be sure the direction is correct before connection.

LISTENING TO TAPE

1. Turn the standby/source button to “TA” mode. The system will start playback automatically after inserting the cassette tape.
2. Press cassette STOP/EJ button half inwards during playback mode. The tape will wind forward.
3. Slightly press the cassette STOP/EJ button again to resume playback.
4. Press the cassette STOP/EJ button completely inwards and the cassette tape will be ejected through the cassette door.

IMPORTANT when using the cassette deck:

- Make sure to insert the cassette in the correct direction.
- To avoid damaging the cassette, we strongly recommend taking it out of the equipment after playing the cassette.

BLUETOOTH OPERATION

1. Turn the source button to BT mode, the “bt” will blink on display.
2. Select from your portable device (Smart-phone, Tablet...) the ID Blue-tooth tagged as “xxx”, then confirm connection
3. Now you can transfer the music to the unit and all operations can only be operated from your mobile device.

Attention: If you reboot the machine, you should repeat those steps to get the Bluetooth function restarted. Under the Bluetooth function situation, it's not available for the hands-free function. The last connected device connects automatically.

AUX IN OPERATION

Listening to a CD (or other auxiliary input)

1. Turn the volume knob clockwise to turn the equipment on.
2. Turn the source selector to select AUX mode, then connect the external audio device (such as a CD player) to the AUX IN socket at the front of the equipment. The audio signal from the external audio device will now be played through the system.
3. If an external audio device is connected to the AUX IN socket, playing of the auxiliary device takes priority over cassette playback.

NOTE: ● The volume output is affected by the volume level on the source. Ensure that the source volume is set to about 70-80% to avoid sound distortion. ● Playback cannot be controlled from the front panel when using AUX IN mode. Playback must be controlled from your connected audio device.

ENCODING FROM CD

Plug USB Disk into USB socket. During CD playing mode, press the REC button one time, "REC-one" will show on the display; press the REC button secondly to record the playing track; or press the SKIP UP button one time to choose to record whole file in the CD and "REC-All" will show on the display.

ENCODING FROM CD-MP3

Plug USB Disk into USB socket. During MP3 playing mode press the REC button one time, "REC-one" will show on the display; then press the REC button secondly to confirm, "REC"" will flash and start to record after 5 seconds; or press the SKIP UP button one time to choose to record all the file in the playing folder and "REC-F" will show on the display; or press the SKIP UP BUTTON twice to record the file in the whole playing MP3 disc and "REC-All" will show on the display.

ENCODING FROM CASSETTE

Plug USB Disk into USB socket. During TAPE playing mode, press the REC button one time, "USB" will show on the display, then press the REC button secondly to confirm, "USB" will flash and recording show on display.

Start to record after 5 seconds; press PLAY/PAUSE button one time to stop the recording and "USB" will not flash; press PLAY/PAUSE button again to resume to record and "USB" will flash again.

ENCODING FROM PHONO

Plug USB Disk into USB socket. During PHONO playing mode, press REC button one time, "USB" will show on the display, then press the REC button twice to confirm, "USB" will flash and start to record after 5 seconds, and recording will show on display. press PLAY/PAUSE button one time to stop the recording and "USB" will not flash; press PLAY/PAUSE button again to resume to record and "USB" will flash again.

ENCODING FROM BLUETOOTH

Plug USB Disk into USB socket. During BLUETOOTH playing mode, press the REC button one time, "USB" will show on the display, then press the REC button secondly to confirm, "USB" will flash and start to record after 5 seconds; and recording will show on display. press the PLAY/PAUSE button one time to stop the recording and "USB" will not flash; press the PLAY/PAUSE button again to resume to record and "USB" will not flash again.

ENCODING FROM AUX IN

1. Turn the source selector to select AUX mode and then insert a memory device .
2. Press the REC button, it will take 3 - 4 seconds to read the memory device, then the recording will be show on the display.
3. Press the skip up or skip down button to select the desired mode for encoding, then press the record REC button again to confirm.
4. The system will start the encoding mode after a few seconds. During encoding the recording will be show on the display.
5. To finish encoding, press the stop button. The display will show "END RECORDER" and return to AUX mode.

NOTE: Press the **STOP** button to stop recording when you finish recording.

NOTE:

- The recording speed is 1:1. Recording will take as long as playing the record.
- The recording format is preset at MP3 bit rate 128 kps

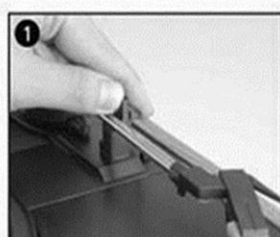
DELETE USB

1. During USB mode, press and hold DEL button one time, the 1 will be blink on display, press previous or next key select the track, and press delete again to confirm You can delete the playing track.
2. Press SKIP UP button The playing file and "a1" will show on the display. You can delete the current playing folder.
3. Press SKIP UP button "a1" will show on the display. You can delete all of the tracks into the playing USB.
4. Finally press DEL button again once confirmed to choose

MAINTENANCE

REPLACING THE STYLUS

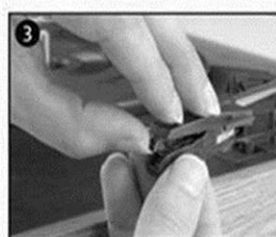
-Refer to the figures 1-8



push the arm lock to release the tone-arm.



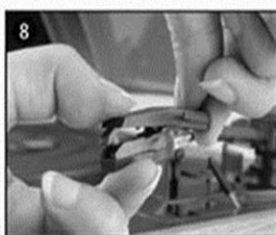
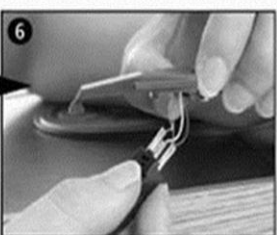
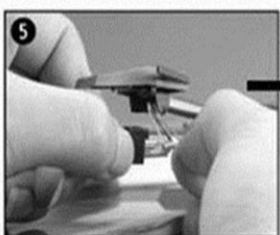
take off cap of the cartridge to expose the needle out.



separate the cartridge from the socket lightly.



take off the audio-line from the cartridges completely.



to fit a new one just in opposite deals. insert the audio-line accordingly, and install the cartridge to the socket lightly.

NOTE: Please exercise extreme care whilst performing this operation so as to avoid the tone arm and audio line wires from any damage.

INSTALLING A NEW STYLUS CARTRIDGE

-Refer to the figures 5 & 6

NOTES

We advise you to clean your records with an anti-static cloth to gain maximum enjoyment from them and to make them last.

We would also point out that for the same reason your stylus should be replaced periodically (approximately every 250 hours)

Dust the stylus from time to time using a very soft brush dipped in alcohol (brushing from back to front of the cartridge)

WHEN TRANSPORTING YOUR RECORD PLAYER DO NOT FORGET TO:

- Replace the protective cap on the stylus.
- Put the rest clip into the pick-up arm.

Accessories included:

- power adaptor
- User manual
- 45 RPM adaptor

FAQ's

Device will not power on

→ Make sure that the unit's power cord is connected to an appropriate electrical outlet and the wall socket is switched on.

There is no sound

→ Rotate the power/volume knob clockwise to increase the volume.

The cassette tape will not play

→ Make sure the function knob is set to your desired function. Make sure it is properly inserted.

The vinyl record will not play

→ Make sure the function knob is set to you desired function. Make sure you have selected the right speed (33, 45 or 78 RPM).

Nothing will play via the AUX IN connection

→ Make sure the cable is firmly connected and check if external device is clean and undamaged. Check the function knob is set to your desired function. Check that volume of external device is at 70-80%.

Nothing will play via the USB device

→ Make sure the memory device is properly inserted in the USB port and the correct function is selected. The media may need to be formatted.

NOTE: If normal operation cannot be obtained, unplug the power cord from the power outlet and plug it in again.

Important Hints

- **Unpacking and handling:** Open the carton carefully and remove the packing. Remove the poly-bag and retain all packaging for future use. Keep all packaging away from small children and animals.
- **Positioning the music centre:** Place the equipment on a stable surface, away from any heat sources, and ensuring adequate ventilation around the music centre.
- **Ventilation and heat sources:** Do not place material over any ventilation slots during use, this will cause the device to overheat and fail. Do not place the device in direct sunlight or near heat sources such as radiators or fires.
- **Candles and open flames:** Do not place lighted candles or tea lights on top of, or at the sides of the music centre. Do not allow any naked flames near the cabinet.
- **Connections:** When connecting the music centre to the mains supply, do not place wires that can be tripped over. Do not trap or place heavy objects on the mains lead.
- **Moisture:** Do not place the equipment in wet or damp conditions, such as steamy kitchens, bathrooms or basements. Do not allow water or other fluids to enter the equipment. Do not touch the mains plug or adaptor with wet hands. Should moisture enter the music centre, disconnect from the power supply.
- **Cleaning and care:** Disconnect the music centre from the mains power supply. Use a soft dry cloth, or for stubborn stains use a soft cloth with a dilute mild detergent. Do not use alcohol-based fluids or abrasive materials.

DO NOT

- Do not use this unit for anything other than its intended to use.
- Do not drop / bump / shake the device
- Do not use the unit if it has been damaged in any way.
- Do not open / repair / disassemble the device
- Do not store the device in high temperature environment / close to open fire / in humid, damp or erosive environments / into water.
- **Stop using** when unusual smell / heating distortion/color-change of the shell material or other abnormal situation happens.
- **Keep away from** children / persons without enough mental ability/persons without enough knowledge to use this product.

FCC WARNING

This device complies with part 15 of the FCC Rules. Operation is subject to the following two conditions: (1) this device may not cause harmful interference, and (2) this device must accept any interference received, including interference that may cause undesired operation.

Any changes or modifications not expressly approved by the party responsible for compliance

could void the user's authority to operate the equipment.

NOTE: This equipment has been tested and found to comply with the limits for a Class B digital device, pursuant to Part 15 of the FCC Rules. These limits are designed to provide reasonable protection against harmful interference in a residential installation.

This equipment generates, uses and can radiate radio frequency energy and, if not installed and used in accordance with the instructions, may cause harmful interference to radio communications. However, there is no guarantee that interference will not occur in a particular installation.

If this equipment does cause harmful interference to radio or television reception, which can be determined by turning the equipment off and on, the user is encouraged to try to correct the interference by one or more of the following measures:

- Reorient or relocate the receiving antenna.
- Increase the separation between the equipment and receiver.
- Connect the equipment into an outlet on a circuit different from that to which the receiver is connected.
- Consult the dealer or an experienced radio/TV technician for help.

To maintain compliance with FCC's RF Exposure guidelines, This equipment should be installed and operated with minimum distance between 20cm the radiator your body