

## SPECIFICATIONS

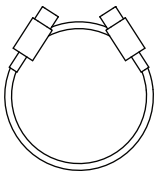


### Wireless Charger

Input: 5V 3A/9V 2.22A/12V/1.67A

Charging Mode: 15W

Dimensions:  $\phi 62 \times 10.6\text{mm}$



### Type-C Power Cable

Type-c to Type-c - 1.8 meter

### PD + QC 3.0 Adapter

Input: 100-240V, 50/60Hz, 0.8A

Output: 5V 3A/9V 2.22A/12V/1.67A

## SAFETY PRECAUTIONS

- Use only certified power adapter as provided, non-certified power adapter may cause irregular or no charging.
- Do not use products provided for anything other than its intended use.
- Use product in location with temperature of 32°F(0°C) - 95°F (35°C), avoid heat source and direct sunlight.
- Avoid water contact or any other liquid. If product becomes wet, unplug it from power source immediately.
- Do not use product if dropped or damaged in any way.
- Any repairs to products should be performed by a qualified electrician only.
- Do not place magnetic cards or similar items near the product.
- Use specified power source and voltage only.
- Place charger on a flat and sturdy surface during use.
- Keep product out of reach of children.

## FCC WARNING STATEMENT

The two-part warning label described in FCC 15.19(a)(3), "This device complies with part 15 of the FCC Rules. Operation is subject to the following two conditions: (1) This device may not cause harmful interference, and (2) this device must accept any interference received, including interference that may cause undesired operation."

This equipment has been tested and found to comply with the limits for a Class B digital device, pursuant to Part 15 of the FCC Rules. These limits are designed to provide reasonable protection against harmful interference in a residential installation. This equipment generates, uses, and can radiate radio frequency energy and, if not installed and used in accordance with the instructions, may cause harmful interference to radio or television reception. However, there is no guarantee that interference will not occur in a particular installation. If this equipment does cause interference to radio and television reception, which can be determined by turning the equipment off and on, the user is encouraged to try to correct the interference by one or more of the following measures:

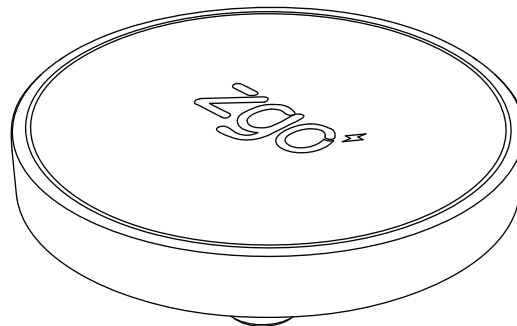
- Reorient or relocate the receiving antenna.
- Increase the separation between the equipment and receiver.
- Connect the equipment into an outlet on a circuit different from that to which the receiver is connected.
- Consult the dealer or an experienced radio/TV technician for help.

This equipment complies with FCC radiation exposure limits set forth for an uncontrolled environment. This equipment should be installed and operated with minimum distance 15cm between the radiator and your body. This transmitter must not be collocated or operating in conjunction with any other antenna or transmitter. Changes or modifications not expressly approved by the party responsible for compliance could void the user's authority to operate the equipment.

# zview

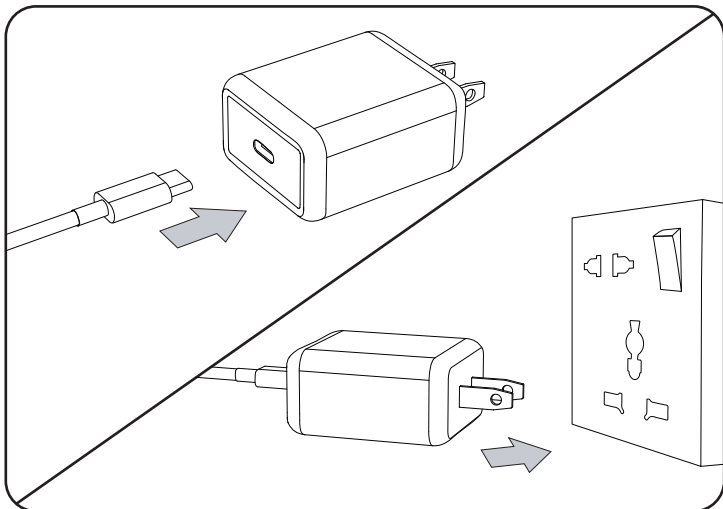
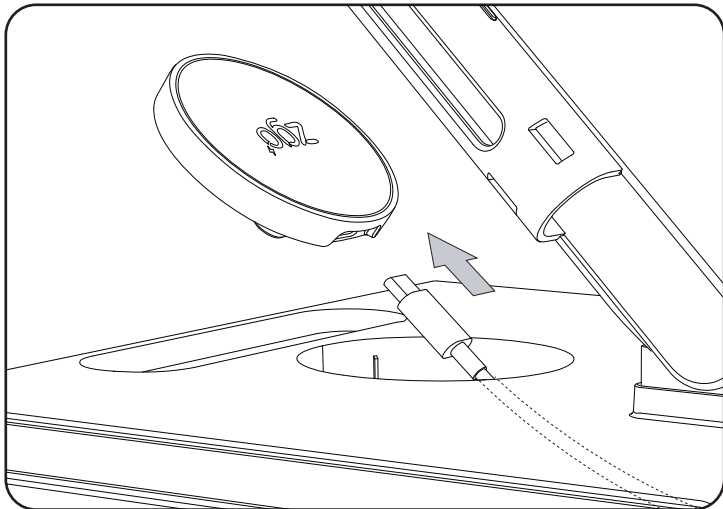
WIRELESS CHARGER

## INSTRUCTION MANUAL



**zgo** | technologies

*Optimal Performance. Infinite Design.*



Slim Case  
(Within 4mm)



Centrally  
Placed



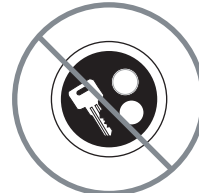
Thickness more  
than 4mm



Crookedly  
Placed



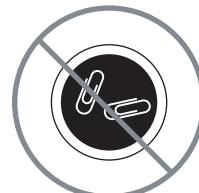
Magnetic Pad



No metal objects on pad  
(Coins, keys, etc..)



Metal Ring  
Case



No metal foreign object  
between device and pad

ISED Canada Statement:

This device contains licence-exempt transmitter(s)/receiver(s) that comply with Innovation, Science and Economic Development

Canada's licence-exempt RSS(s). Operation is subject to the following two conditions:

- 1) this device may not cause interference and
- 2) this device must accept any interference, including interference that may cause undesired operation of the device.

Radiation Exposure: This equipment complies with Canada radiation exposure limits set forth for an uncontrolled environment

RF Exposure Statement

To maintain compliance with IC's RF Exposure guidelines, This equipment should be installed and operated with minimum distance of 10cm from your body. This device and its antenna(s) must not be co-located or operation in conjunction with any other antenna or transmitter

Déclaration de l'ISED Canada :

Cet appareil contient des émetteurs / récepteurs exempts de licence  
se conformer à l'innovation, la science et le développement économique  
Les RSS du Canada exempts de licence. Leur fonctionnement  
suivant deux conditions:

- 1) cet appareil ne peut pas causer d'interférences et
- 2) ce dispositif doit accepter toute interférence, y compris  
peut provoquer le fonctionnement indésirable de l'appareil.

Exposition aux rayonnements : Cet équipement est conforme aux radiations du Canada  
limites d'exposition pour un environnement incontrôlé  
nonné d'exposition RF

Pour maintenir le respect des guides d'exposition RF d'IC,  
l'équipement doit être installé et actionné avec une distance minimale de 10cm  
du radiateur de votre corps. Cet appareil et ses antennes ne doivent pas être co-  
localisés ou en opération en conjonction avec toute autre antenne ou  
émetteur