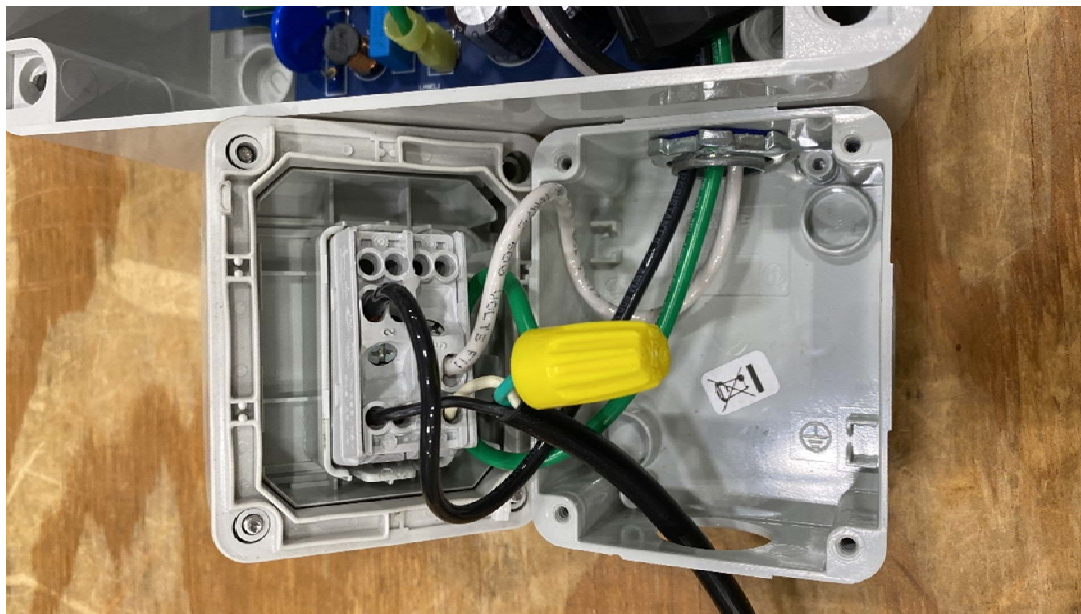
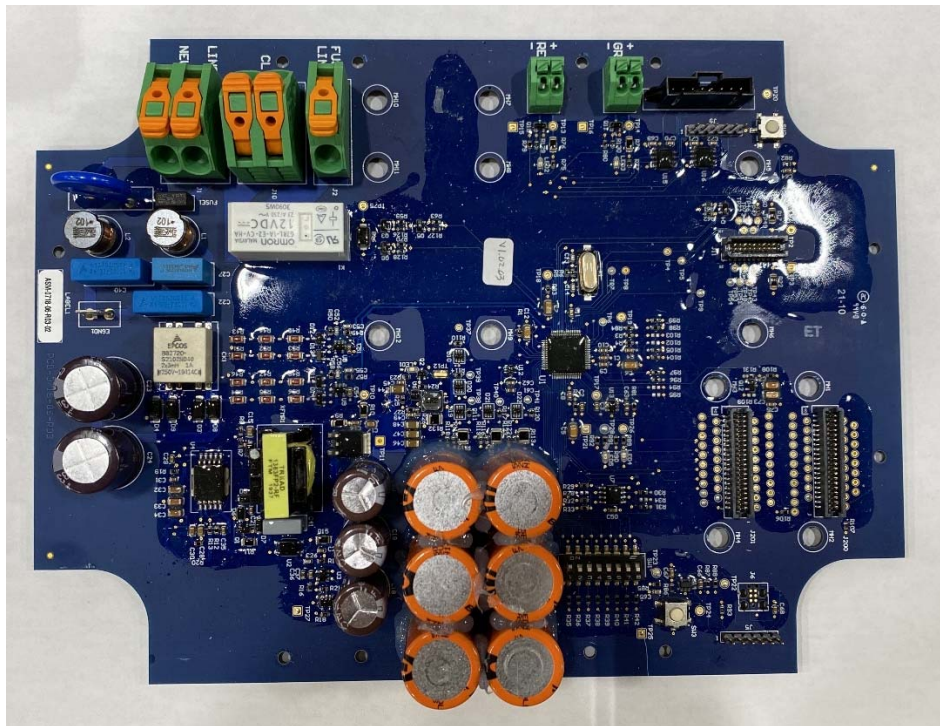
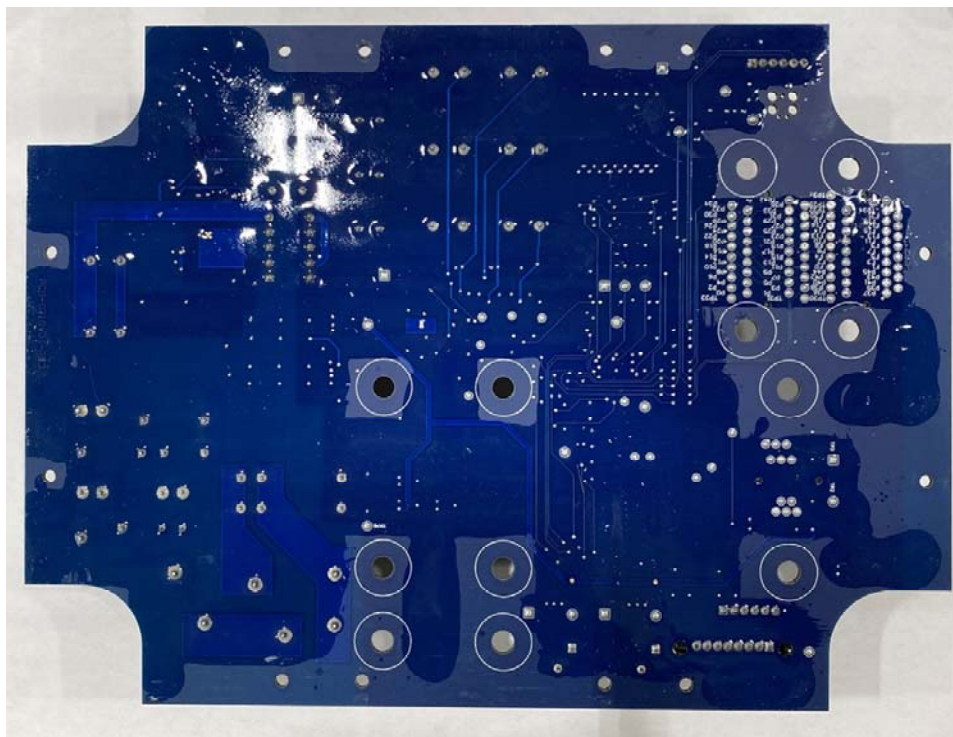


HIFIS Internal layout (main enclosure), with transmitter module installed.





Main PCB (Top View)



Main PCB (Bottom View)

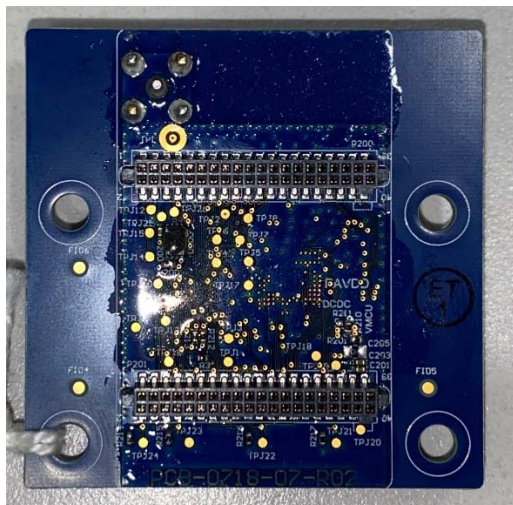




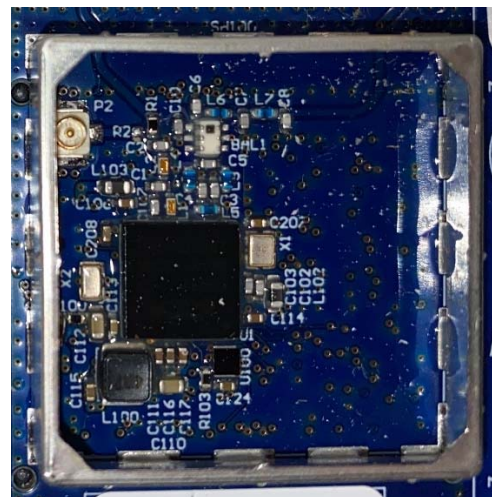
Transmitter Modules, 80% Duty Cycle.



Transmitter Modules, 3% Duty Cycle.



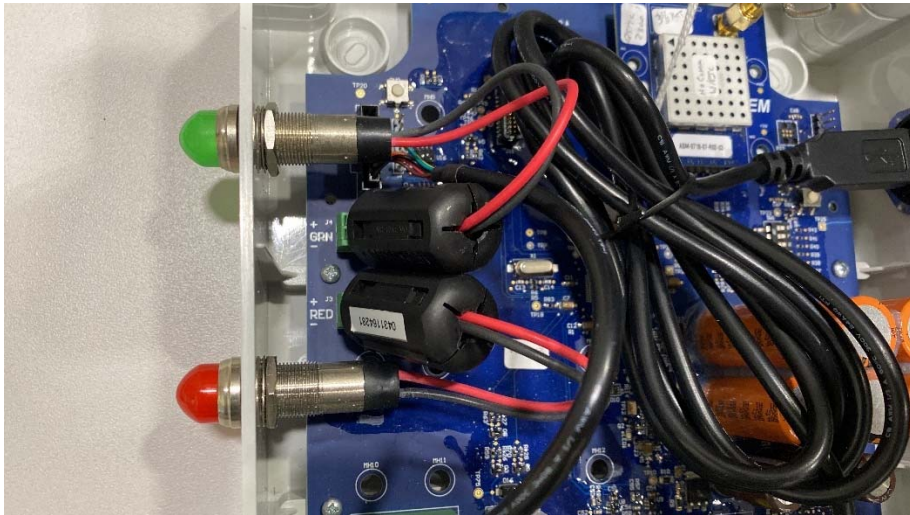
Transmitter module (bottom side)



Transmitter module RF Section (Shield cover removed)



Modification: Fair-Rite 0431164181 ferrite added to AC power input harness (all 3 conductors, double passthrough). Ferrite position right at the point of enclosure entry.



Modification: Fair-Rite 0431164281 ferrite added to added to each LED annunciator harness. A single ferrite clamped on both LED wires in a single passthrough configuration. Ferrite was position closest to the PCB connector end of the LED harness.