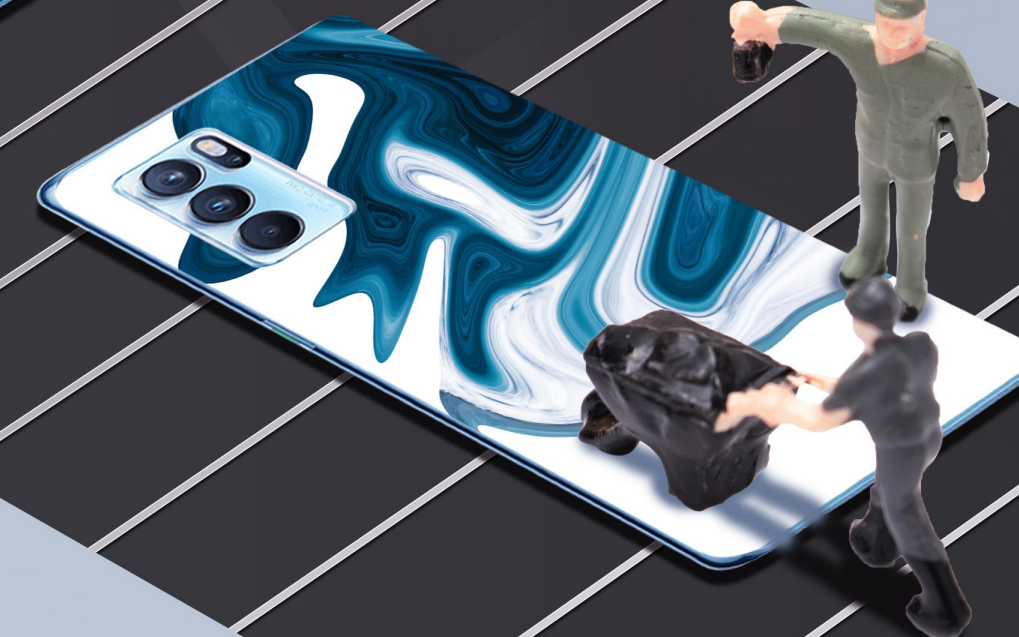
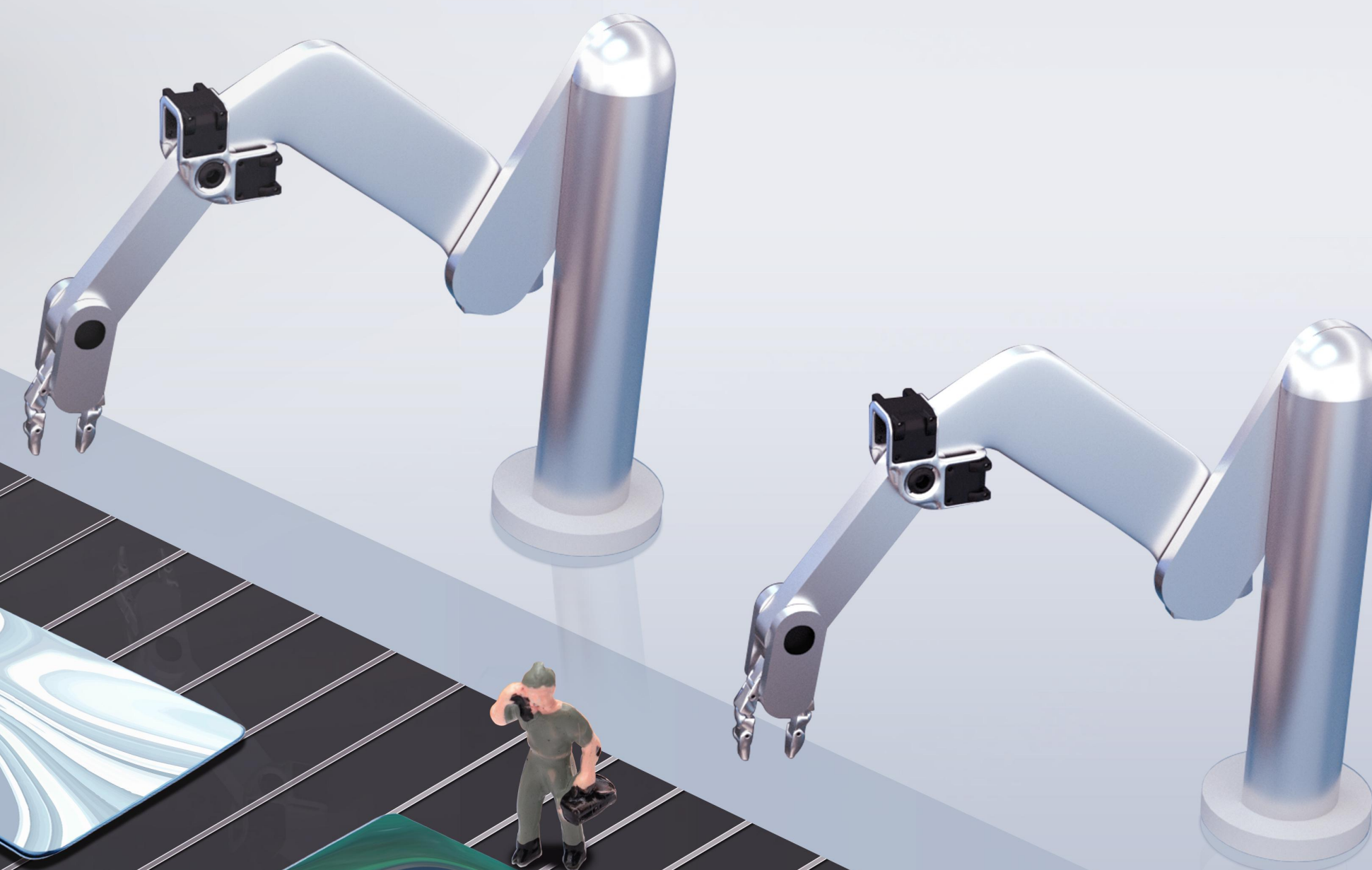
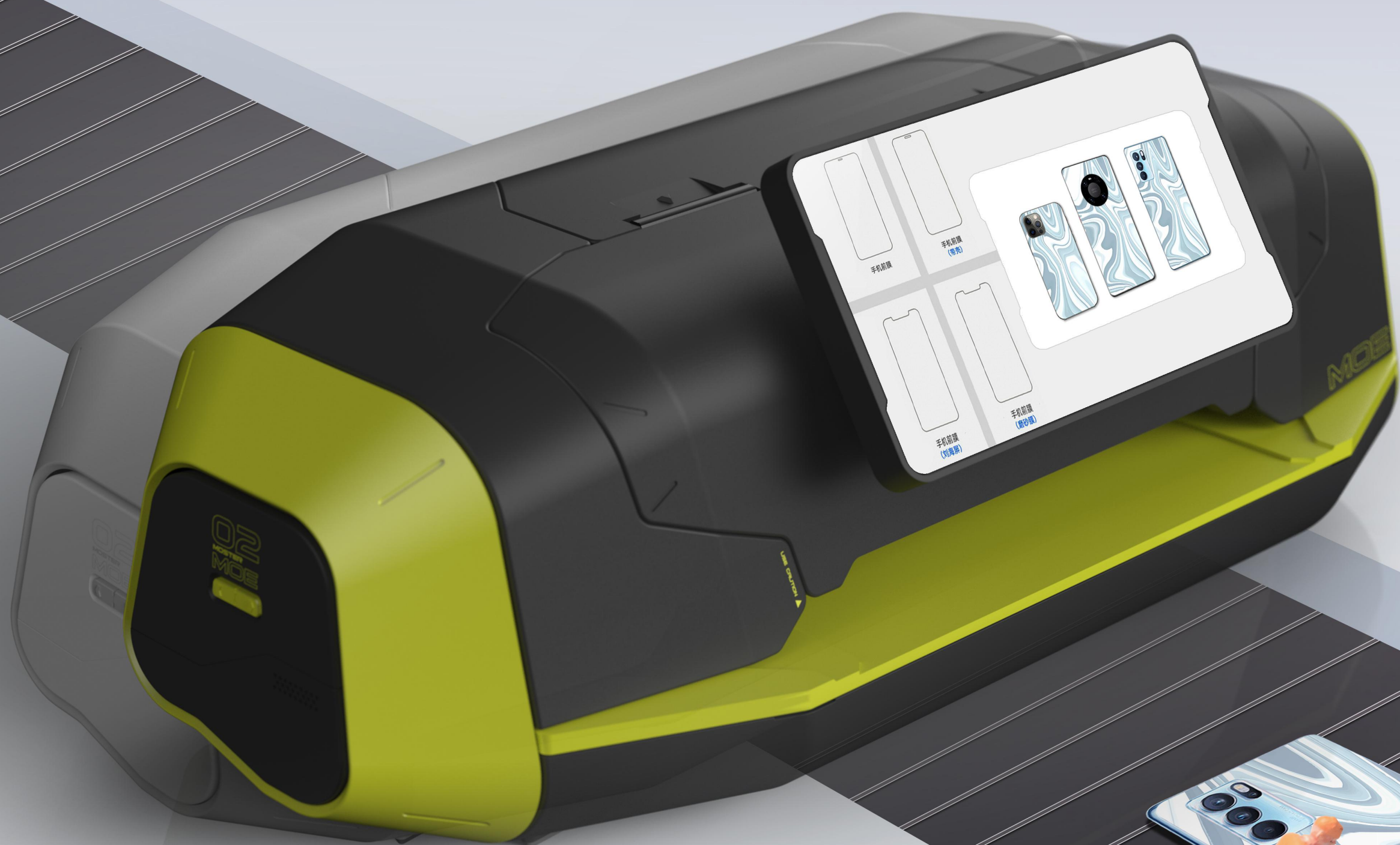




MONSTER MOE

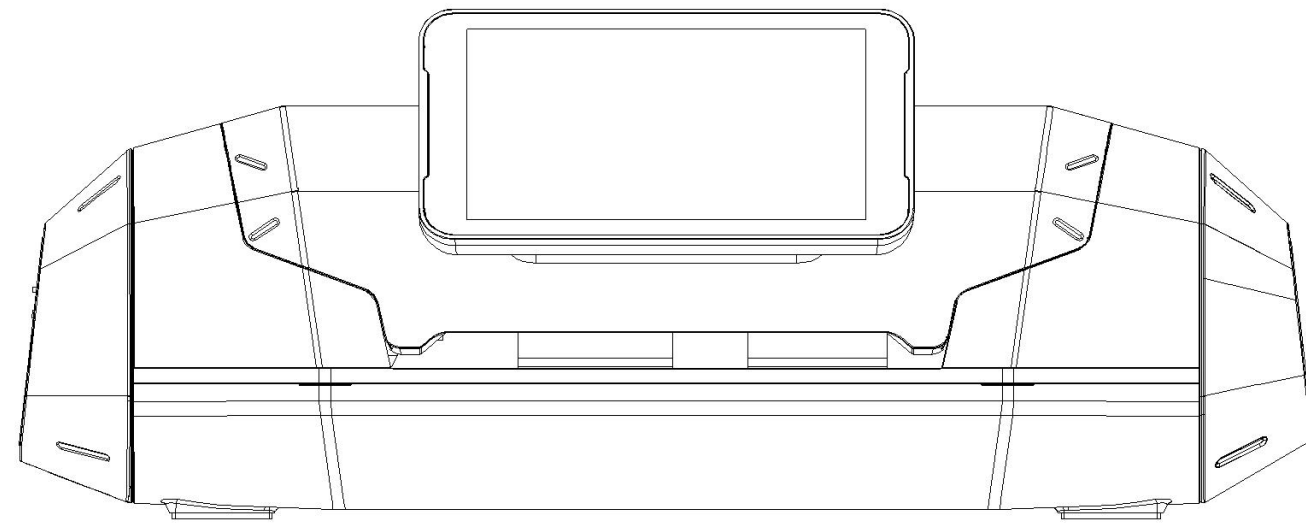


Intelligent die cutting machine product manual

USER MANUAL

MOE 2

product list



Intelligent die cutting machine host



Intelligent film cutting machine host
- physical reference

Product Parameter

input : 24V 2.75A

power: 66W

size: 440*210*170mm

suttle: 4.95kg

communication mode: WIFI

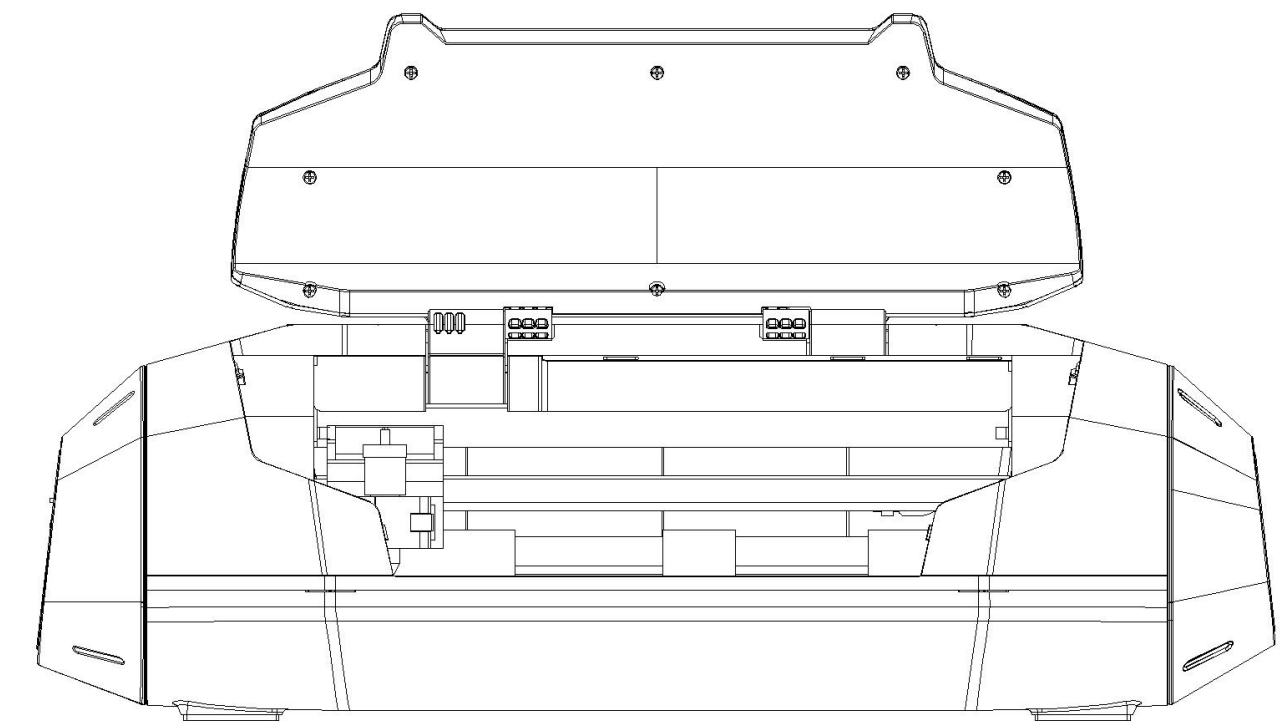
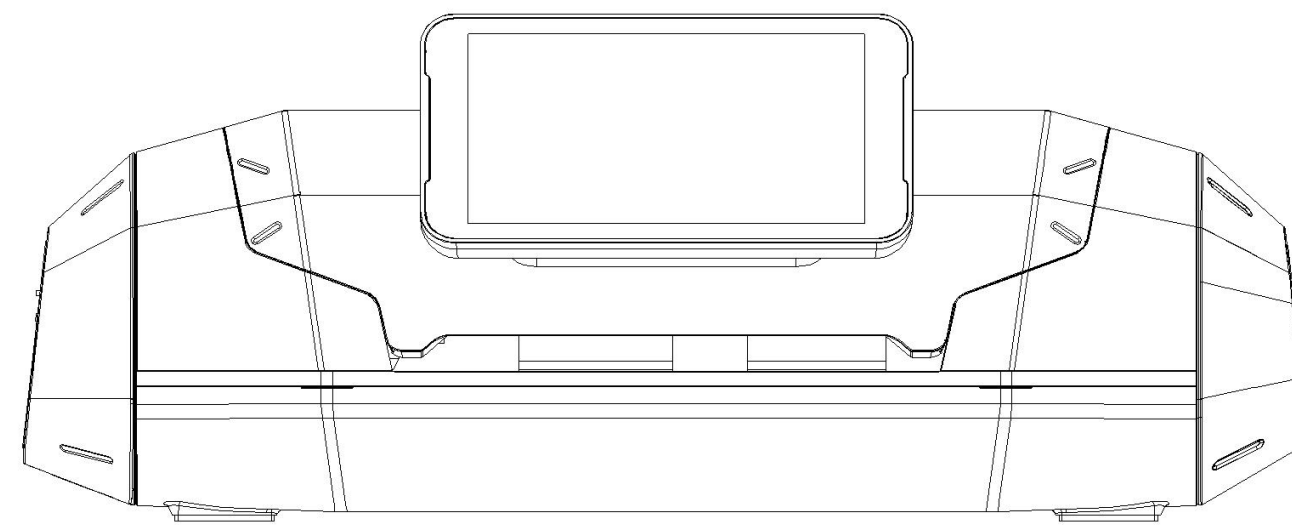
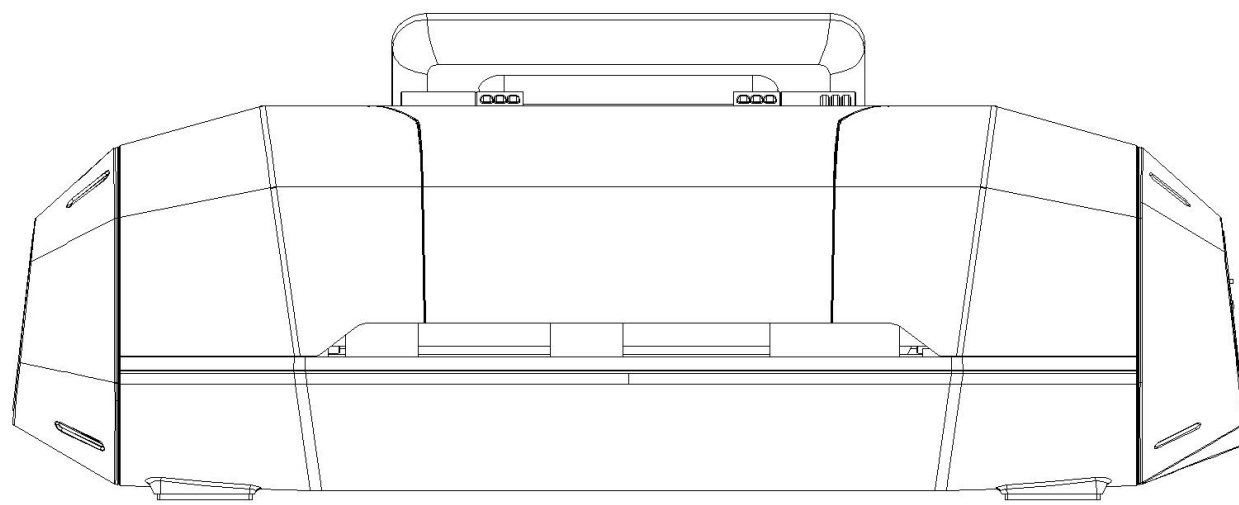
Maximum feed size: 205

Maximum cutting size: 195

cutting accuracy: 0.1mm

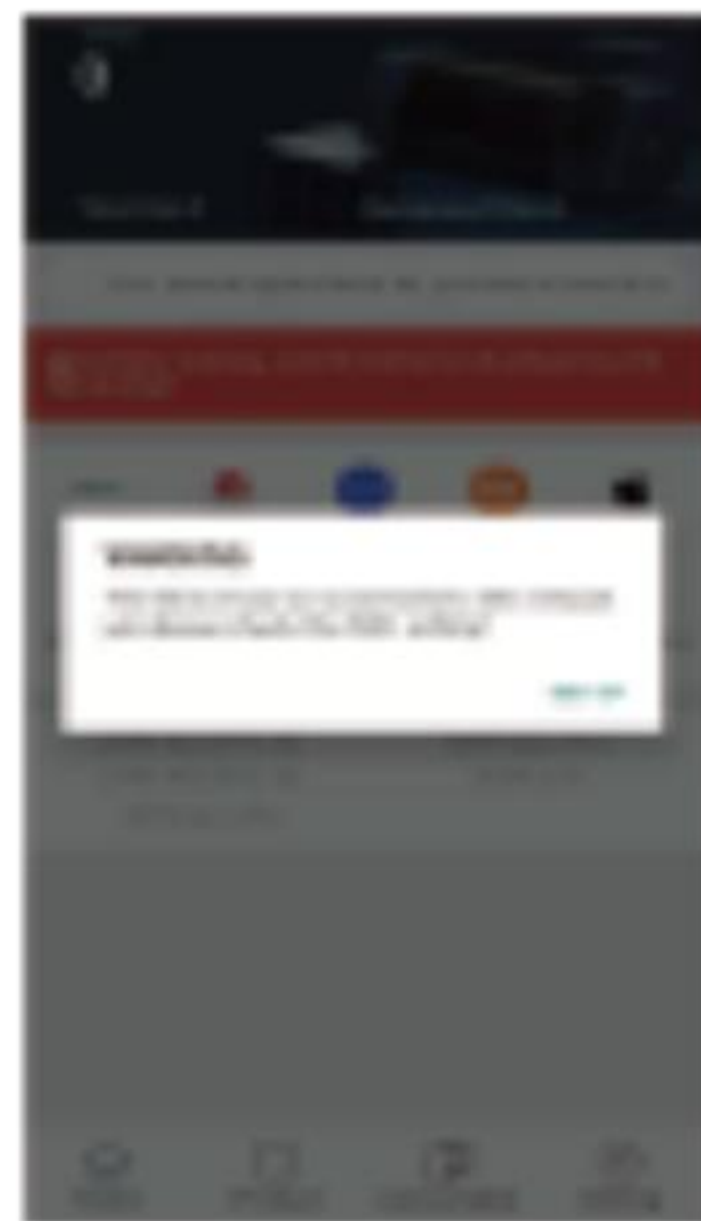
Directions for use

Connect the power cable to the adapter, and connect one end of the power cable to the power socket. To ensure the normal operation of the device, use 110-240 volts AC power. Connect one end of the adapter line to the power interface of the film cutting machine. After the connection is complete, press the power button to start the device.



The operation of film

1. For the first time, click "Select Language" to complete the language setting; Then click "Set WIFI" to complete the communication link.

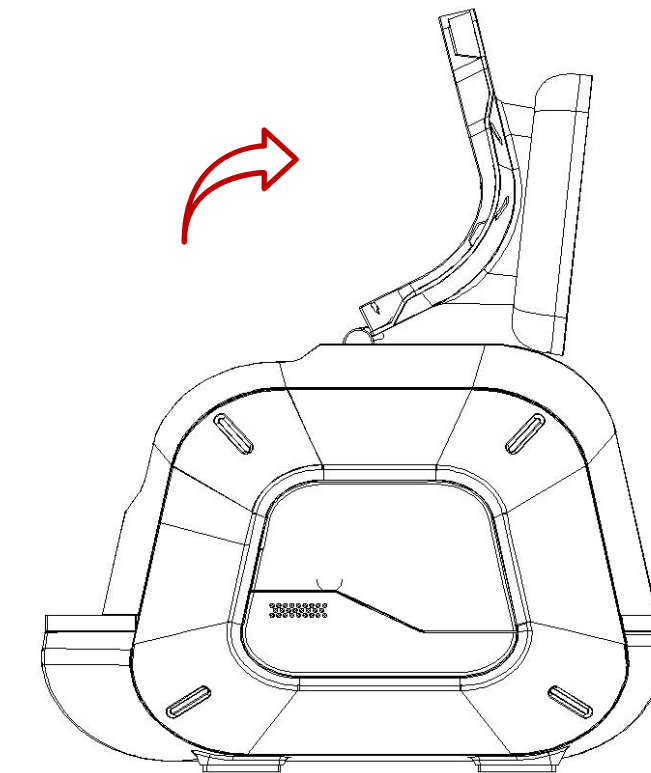
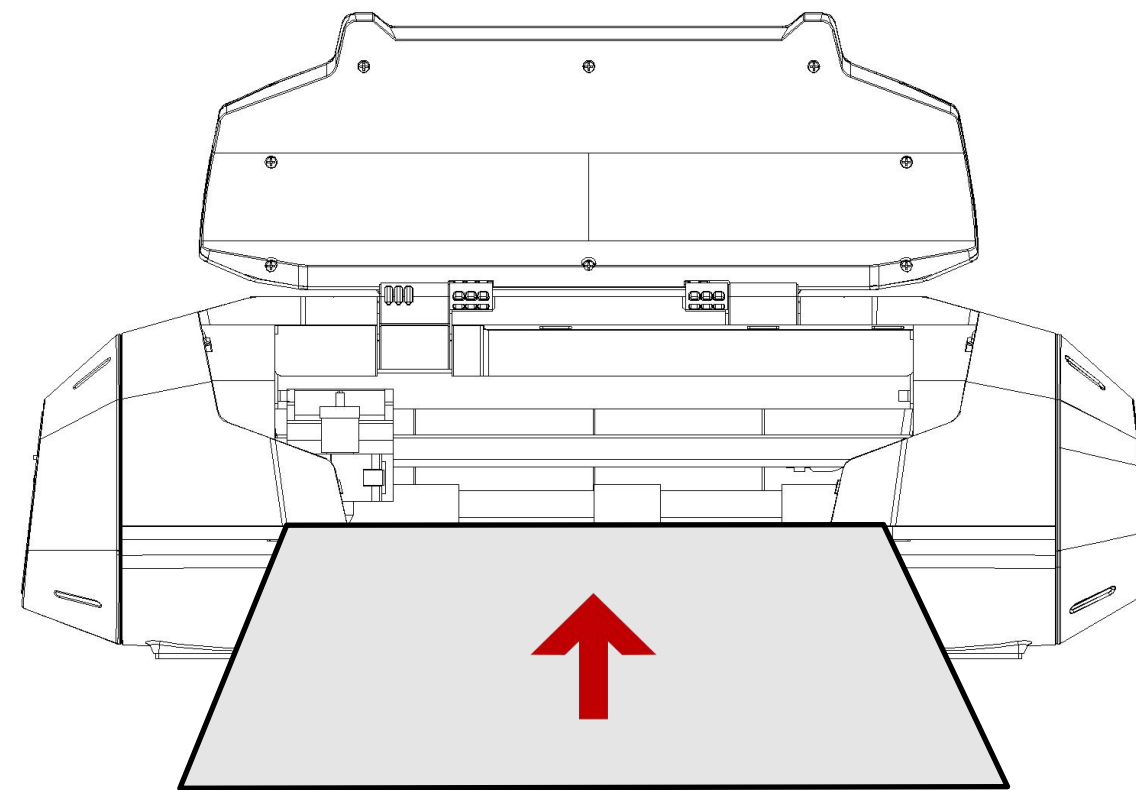
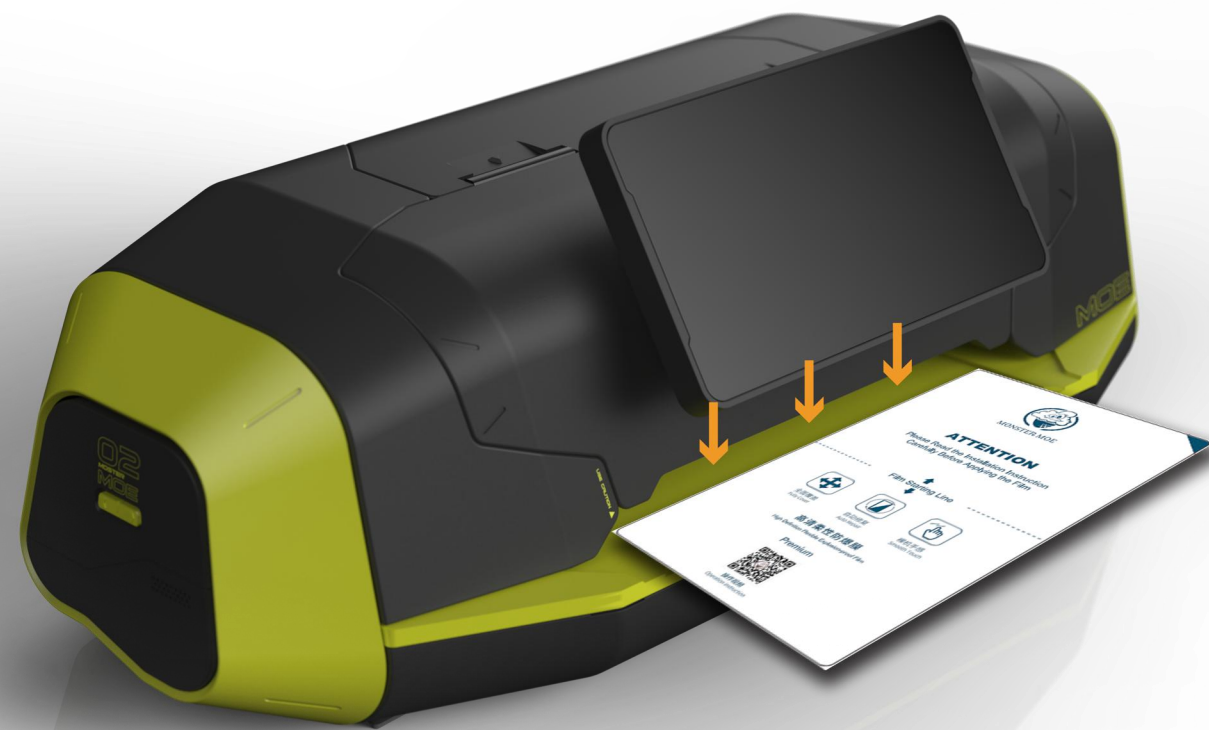


2. Please prepare a protective film to be cut as shown in the picture. Make sure that the protective film is smooth and complete without bending, folding or missing layer.



The operation of film

3. Press the pressure bar to lift the pressure wheel, and place the protective film along the film reference line. Slowly lift the pressure lever so that the pressure wheel compacts the protective film.



The operation of film

4. After the system starts properly, the home page is displayed



5. Enter the product model you want to cut in the search box and select a protective film.



6. Check the protective film that has been placed correctly, and click "Correct" to start cutting. The protective film will exit automatically when the cutting machine is finished. Remove the protective film and complete the film cutting.







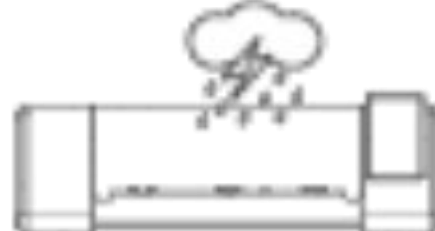


Activate the membrane code

Input the consumables verification code on the back of the protective film packaging box and click "Confirm to add" to complete the addition



matters need attention

	Do not touch the tip of the knife with your fingers to avoid injury
	Placing liquid solids at the end of the year fell into the machine, causing a malfunction
	Do not destroy or replace the original power cable Avoid power supply damage, causing disasters
	When not in use, please unplug the power in time to prevent fire
	Place the device on a stable plane to avoid falling damage
	Do not pull the cable forcibly. Pull the plug to avoid electric shock or fire
	It is forbidden to use in thunderstorm weather to avoid lightning damage to the machine



MONSTER MOE

FCC Statement

This equipment has been tested and found to comply with the limits for a Class B digital device, pursuant to Part 15 of the FCC Rules. These limits are designed to provide reasonable protection against harmful interference in a residential installation. This equipment generates uses and can radiate radio frequency energy and, if not installed and used in accordance with the instructions, may cause harmful interference to radio communications. However, there is no guarantee that interference will not occur in a particular installation. If this equipment does cause harmful interference to radio or television reception, which can be determined by turning the equipment off and on, the user is encouraged to try to correct the interference by one or more of the following measures:

- Reorient or relocate the receiving antenna.
- Increase the separation between the equipment and receiver.
- Connect the equipment into an outlet on a circuit different from that to which the receiver is connected.
- Consult the dealer or an experienced radio/TV technician for help.

This device complies with part 15 of the FCC Rules. Operation is subject to the following two conditions:

(1) This device may not cause harmful interference, and (2) this device must accept any interference received, including interference that may cause undesired operation.

Changes or modifications not expressly approved by the party responsible for compliance could void the user's authority to operate the equipment.

FCC Radiation Exposure Statement The antennas used for this transmitter must be installed to provide a separation distance of at least 20 cm from all persons and must not be co-located for operating in conjunction with any other antenna or transmitter.