

USER MANUAL

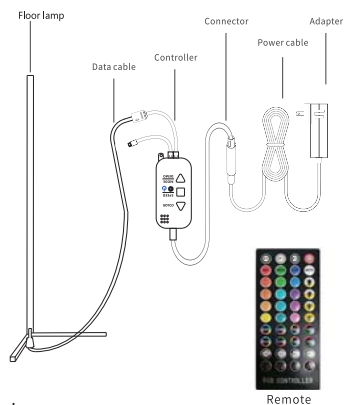
SMART LED FLOOR LAMP USER MANUAL

LED
SMART FLOOR LAMP



-1-

Product Introduction



Features

RGB
This RGB LED Floor lamp kit has not only RGB (Red, Green, Blue), 32 multicolored options, but also DIY selection to create your great led mood lighting.

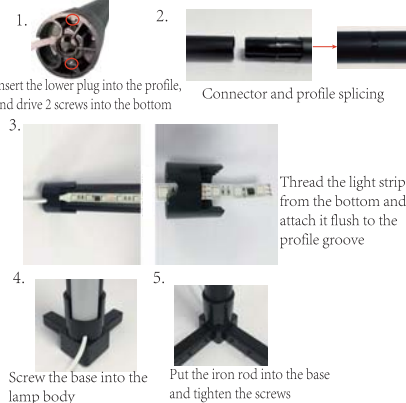
MUSIC Reactive
Music synchronized LED Floor lamp shows in real-time.

Remote APP Control
Remotely control strip Floor lamp the APP. Put Floor lamp changing at your fingertips.

Voice Activated
Works with Alexa and Google Assistant. Control Floor lamp by simple voice commands.

-2-

Installation Steps



Controlling By Control Box



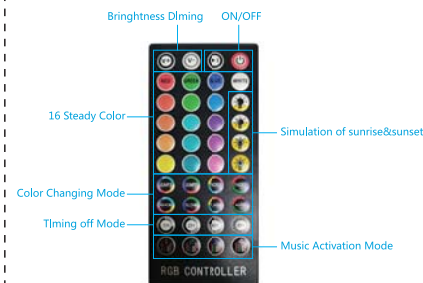
ON/OFF button: Short press to turn on/off the Floor lamp, long press 5 seconds, the LED controller will start config.

Bright/speed adjustment: Short press to switch speed circularly, long press to switch bright circularly.

Music/Mode/Scene adjustment: Short press to switch the scene circularly; double press to switch the mode between the static / pre-set / custom / music circularly; long press to enter in/exist out music mode.

-3-

Controlling By Remote



ON/OFF	Click to turn on/off the floor lamp
Brightness Dimming	Click to adjust the brightness of the lamps
16 Steady Color	Click to select 16 basic colors
Color Changing Mode	Click to make the light color change freely
Music Activation Mode	After clicking, the light will move with the rhythm of the music
Timing off Mode	Turn on timer off mode
Simulation of sunrise&sunset	Allows lighting to simulate sunrise & sunset atmosphere

Setting the APP

Step 1:
Scan the QR Code or search "Smart Life" or "Tuya Smart" on App store or Google Play to download and install the APP for iOS / Android.
The mobile phone system version needs to be Android 5.0 and iOS 9.0 or above.

-4-

Step 2:

Run "Smart Life" or "Tuya Smart" app on your phone, then tap "sign up" to create an account with Email address (if you already had one, please log in), and verify your account with verification code which has sent to your email.

Step 3:

Log in your account and follow the App instructions to create a "Family" and later follow below instructions to add devices to your "Family".

Quick Mode Configuration(EZ mode)

- Before connecting, please make sure your smart phone is connecting with your home successfully.
- To connect in EZ mode, the strip lights needs to be set to blinks rapidly. (You can learn the detailed instruction on "How to set light as rapidly flashing" section).

-5-

- Open APP and click "+" to add device.
- Follow the in-APP instructions to connect the Floor lamp to your network. Please note the device only works at 2.4GHz network.
- Once connected, the APP will prompt the connection. Then click "Completed".
- Now you can control the Floor lamp through the APP.

AP (Access Point) Mode Configuration

- Before connecting, please make sure your smart phone is connecting with your home successfully.
- To connect in AP mode, the Floor lamp needs to be set to blinks Slowly. (You can learn the detailed instruction on "How to set light as slowly flashing" section)



-6-

- Click the ICON "+" at the top right corner of the APP.
- Select device type and click AP mode to add device.
- Go to network setting in your smart phone and select the "Smart Life-XXX" for your network.
- Once connected successfully, the APP will prompt the connection, and click "Completed".

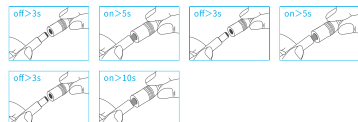
How to set light as rapidly flashing (EZ Mode)

Method 1

Step 1 Power on device



Step 2 Turn off-on-off-on-off-on



Step 3 Confirm Floor lamp is now rapidly flashing



FLOOR LAMP

Method 2

Step 1 Power on device



-7-

Step 2 Hold the power button for 5S



Step 3 Confirm Floor lamp is now rapidly flashing



FLOOR LAMP

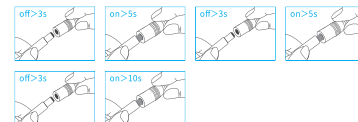
How to set light as slowly flashing (AP Mode)

Method 1

Step 1 Power on device



Step 2 Turn off-on-off-on-off-on



Step 3 Confirm Floor lamp is now rapidly flashing



FLOOR LAMP

-8-

Step 4 Operate again: Turn off-on-off-on-off-on until light is slowly flashing



FLOOR LAMP

Method 2

Step 1 Power on device



Step 2 Hold the power button for 5S



Step 3 Confirm Floor lamp is now rapidly flashing



FLOOR LAMP

Step 4 Operate again: Hold the power button for 5S until light is slowly flashing

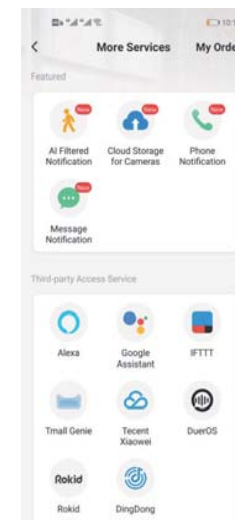


FLOOR LAMP

-9-

How to connect Floor lamp to Amazon Alexa / Google Assistant

You can learn the detailed instruction on "Me->More Services" page of the APP. Tap the corresponding service to learn more and how to set up.



-10-

FCC WARNING

This device complies with part 15 of the FCC Rules. Operation is subject to the following two conditions: (1) this device may not cause harmful interference, and (2) this device must accept any interference received, including interference that may cause undesired operation.

Any changes or modifications not expressly approved by the party responsible for compliance could void the user's authority to operate the equipment.

NOTE: This equipment has been tested and found to comply with the limits for a Class B digital device, pursuant to Part 15 of the FCC Rules. These limits are designed to provide reasonable protection against harmful interference in a residential installation. This equipment generates, uses and can radiate radio frequency energy and, if not installed and used in accordance with the instructions, may cause harmful interference to radio communications. However, there is no guarantee that interference will not occur in a particular installation.

If this equipment does cause harmful interference to radio or television reception, which can be determined by turning the equipment off and on, the user is encouraged to try to correct the interference by one or more of the following measures:

- Reorient or relocate the receiving antenna.
- Increase the separation between the equipment and receiver.
- Connect the equipment into an outlet on a circuit different from that to which the receiver is connected.
- Consult the dealer or an experienced radio/TV technician for help.

To maintain compliance with FCC's RF Exposure guidelines, This equipment should be installed and operated with minimum distance between 20cm the radiator your body: Use only the supplied antenna.