

# Car Smart converter Carplay Box

## User Manual



V3.2109.LX-90T

### (1) Product introduction

LX-90T car intelligent conversion box, mainly to realize the interconnection of mobile phone and car  
The conversion function integrates the mobile phone and the car screen, which will be more diversified Mobile phones are converted to car entertainment, providing users with richer driving entertainment, Music; reducing the frequency of users using mobile phones, providing users with a safer driving Car experience.

### (2) Products and Accessories Host



LX-90T  
Converter Box



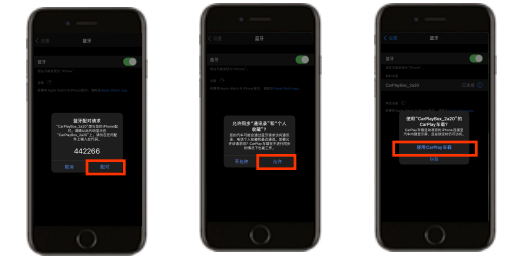
TYPEC Cable  
(30 CM)

### (3) Product instructions

— iOS Phone User  
1. Connect the box to the original car USB Data interface; the original car screen enters the Carplay page  
Waiting for connection, reading box data;



2. Turn on the Bluetooth of the iPhone, search for the Bluetooth signal of the connection box: "carplaybox-\*\*\*\*" to connect and pair, and finally click "Use Carplay"



3. After the connection is successful, you can pass the original car screen to operate Use Carplay;

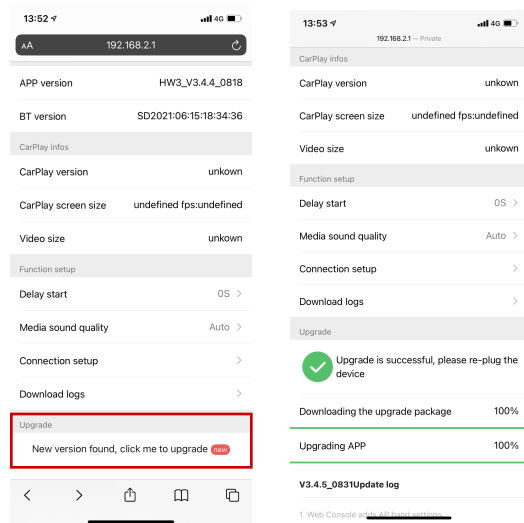


### (4) Frequently Asked Questions

#### 1. How to update the product?

After the Apple mobile phone is successfully connected to the CarPlay box, or connect to the mobile phone in the box WI-Fi, Wi-Fi password: 88888888, Apple mobile phone access Safari browser, Enter the IP address: 192.168.2.1 to change. Mode setting and upgrade to the updated version;

**[Note: After changing the settings or upgrading the box, you need to plug and unplug the box again]**



Enter the web settings Page  
There will be an upgrade prompt

Then click to upgrade, after the  
upgrade is successful, unplug the box



Note: When upgrading the box,  
please connect the USB data cable  
to the car charger port.  
Do not connect the box to the USB data  
port of the original car for upgrading.



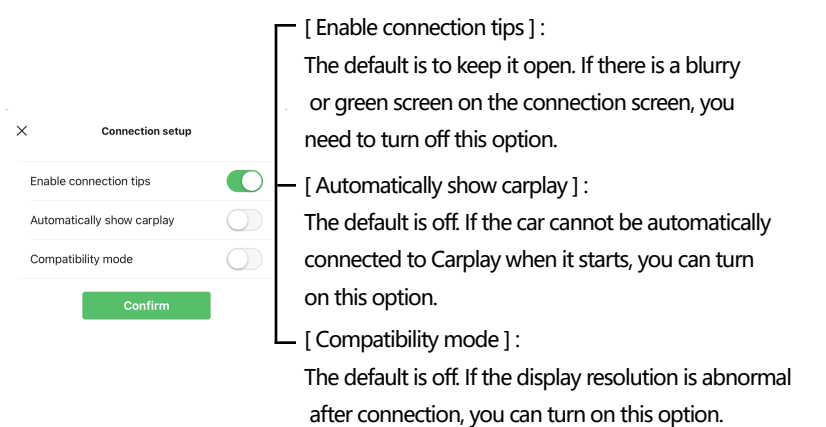
### (4) Frequently Asked Questions

#### 2. Web page setting page, function introduction

A. [ Delay Start ] : This is the time to delay the start of the box, and generally do not need to be modified

B. [ Media sound quality ] : If there are problems with Siri, music, navigation, and phone sounds during use, you can modify this to match.

C. [ Connection setup ] : There are three options here



D. [ Download logs ] : If the model problem cannot be solved by the above setting methods, you can download the log data, send the file to the dealer, and send it back to our engineers for in-depth analysis for processing and solution.

### (5) Product after-sales warranty and warranty

(1) . Terms of Service  
Every purchase of this terminal product can enjoy the three guarantees service (except shell and wire) that we provide for you.

(2) . Host Warranty Regulations  
1. Commodity host (please confirm at the time of purchase, except for commodities that are not suitable for return), within 7 days from 0:00 on the second day of the logistics receipt date (Seven days for the full 168 hours) The product is in good condition, and the product packaging and accessories are complete. At the same time, the appearance of the mobile phone is not damaged and no one is damaged You can enjoy "7 days no reason to return the goods".  
2. From the second day after receipt, if there is a performance failure that is not artificially damaged within 7 days, you can choose according to the test results of authorized after-sales outlets Return or replace products of the same model and specifications or free maintenance services.  
3. Counting from the second day of the receipt date, if there is a performance failure that is not artificially damaged from the 8th to the 15th day, based on the test results of the authorized after-sales outlets, you can choose to replace the same model and specification machine or repair service.  
4. If the host has a performance failure that is not artificially damaged within one year from the date of receipt of the logistics, the consumer can authorize the after-sales service Outlets enjoy free maintenance service.  
5. Any wear or scratches on the appearance of the product will not enjoy the return or replacement service.  
6. The product host has a performance failure that is not artificially damaged within one year from the date of receipt of the logistics. After two repairs, it still cannot be corrected. Frequently used, you can choose to repair for free or with the valid repair record provided by the repairer in the warranty card, contact customer service to confirm whether it is available if you can exchange the goods, you will be replaced with the same model and specification products or you can choose to return the goods.

(3) . Accessories warranty rules  
1. The attached data cable/package (not covered by the warranty).

(4) . Warranty terms restrictions  
1. Exceeding the warranty period;  
2. Failure to use, maintain or maintain the product in accordance with the requirements of the product instruction manual causes damage;  
3. Damage caused by misuse, such as falling, squeezing, or immersion in water;  
4. Damage caused by force majeure such as floods, fires, lightning strikes, etc.;  
5. Machines repaired by an unauthorized repair center;  
6. Use of non-original accessories, causing malfunctions or accidents;  
7. Any product sold through unofficial channels, and the model, number, and manufacturing number indicated on the product have been changed, deleted, moved or not identifiable  
8. It only includes hardware maintenance service, all configurations and accessories, such as data cable housing and user guide, etc. are not included in the maintenance service;

**FCC Statement:**

This device complies with Part 15 of the FCC rules. Operation is subject to the following two conditions: 1) this device may not cause harmful interference, and 2) this device must accept any interference received, including interference that may cause undesired operation.

This equipment has been tested and found to comply with the limits for a Class B digital device, pursuant to Part 15 of the FCC rules. These limits are designed to provide reasonable protection against harmful interference in a residential installation. This equipment generates, uses and can radiate radio frequency energy and if not installed and used in accordance with the instructions, may cause harmful interference to radio communications. However, there is no guarantee that interference will not occur in a particular installation. If this equipment does cause harmful interference to radio or television reception, which can be determined by turning the equipment off and on, the user is encouraged to try correct the interference by one or more of the following measures:

- Reorient the receiving antenna.
- Increase the separation between the equipment and receiver.
- Connect the equipment into and outlet on a circuit different from that to which the receiver is connected.
- Consult the dealer or an experienced radio/TV technician for help.

Changes or modifications not expressly approved by the party responsible for compliance could void your authority to operate the equipment.