

Solar CCTV Camera



The user guide is for reference only.
Screen shots displayed in this user's guide of the "i-Cam+" app may appear differently than those currently featured in your app as frequent updates and improvements.

1. APP INSTALLATION

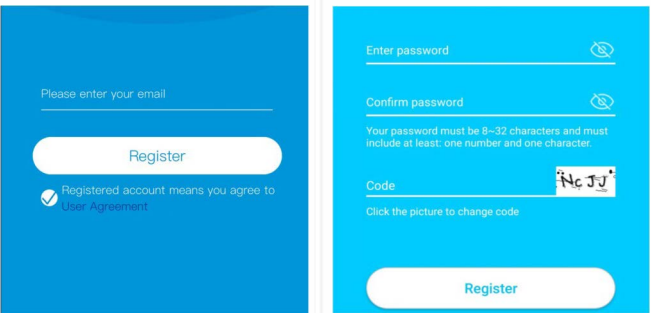
(1.) Scan the following QR codes or search for "i-Cam+" from the AppStore(for iOS devices) or Google Play Store (for Android smartphones) to download and install the app.



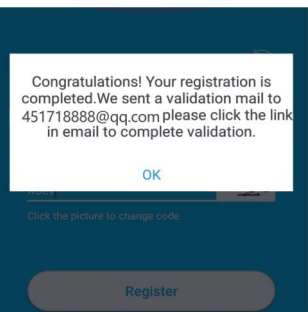
2. APP REGISTRATION

(1.) Open the app then input your E-mail address then press 'Register'. Check and select to agree the agreement then your E-mail box will get an verification mail.
(For better user's experience, please allow to open all permissions to avoid missing any notifications from the app.)

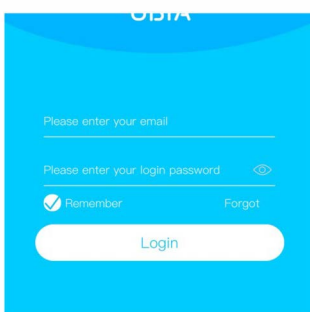
(2.) Set the login password and confirm the login password. Then press 'Register' to next step. (For your password safety, the password requires more than 8 characters plus combination of letters)



(3.) We send a verify mail to you, go to your mail box click the link to complete the verification.



(4.) Enter your E-mail address, and password, click login. (APP will auto fill the account infoaion)



3. WI-FI CONNECTION

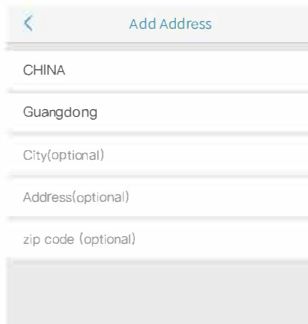
(1.) Press 'Add Family' then set the room or position as per reminders.



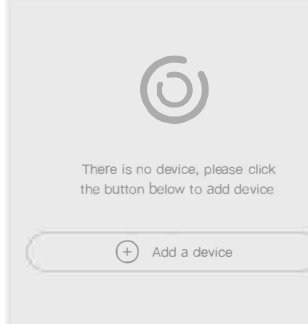
(2.) Enter your family name and then press 'Next'.



(3.) Input the necessary information just like Country, Province, then press 'Done'.



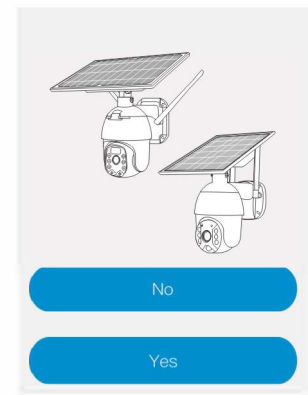
(4.) Press 'Add a device' to add a smart device



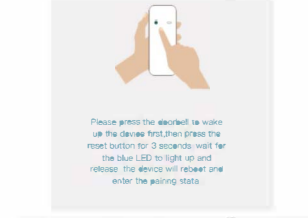
(5.) Connect the device with power supply, and make sure your mobile phone is connected to an available Wi-Fi. Then press 'Setup device'.



(6.) After the power on the device, wait for the device bule LED are blinking Which means your device in pairing mode



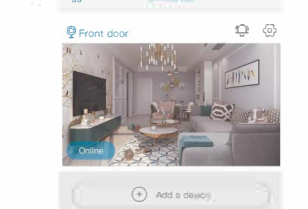
(7.) If the device blue are not blinking, please press the power/Call key to wake up the device first, then hold and press the RESET button until the blue indicator to light up and then release. The device will reboot and enter the pairing state.



(9.) The app will input the Wi-Fi name automatically, please input the correct Wi-Fi Password. Then you can choose the 'QR code configuration' or 'Sound wave configuration'.



(11.) The device will enter to the device list automatically. Setup success! The device is ready to use.



(8.) Set the device name and select the device location before setup.



(10.) QR code configuration: Select the QR code configuration then the mobile phone display a QR code. Use the device to scan to the QR code 10cm away from the mobile phone.

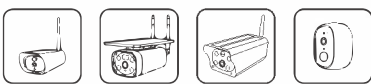


(12.) Notes about PIR detection
"User can change the PIR detection sensitivity in device settings. We recommend to set sensitivity at "Disabled" or "Low" to reduce false alert and save the battery power in noisy environments."
"Disabled": disabled PIR detection.
"Low": delay 7 seconds PIR detects a moving.
"Medium": delay 5 seconds PIR detects a moving.
"High": delay 1 second PIR detects a moving.

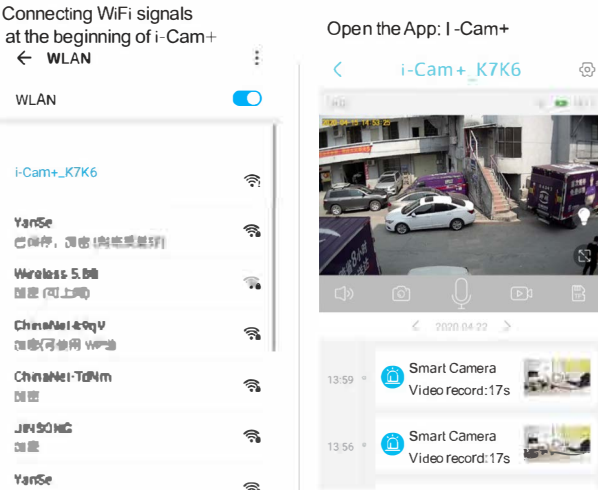


4. AP mode (connection without Internet)

This feature is only used for the following devices:

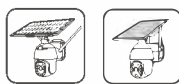


- Download the APP: i-Cam+ (If you already downloaded it, please ignore this step)
- Operation steps of switching AP mode: install the battery on the device and power on, make sure that the indicator light on the front of the device is on, and use the matching looped needle inside the accessory package "press and hold" the AP / WiFi button of the device until the sound is heard
- Turn on the mobile phone to search for a WiFi. The beginning of "i-Cam+_****", the connection password is 12345678 (Note: keep connected to this WiFi)
- Open the app: i-cam+, the connection is completed, and the screen can be viewed, and the video record can also be selected for playback

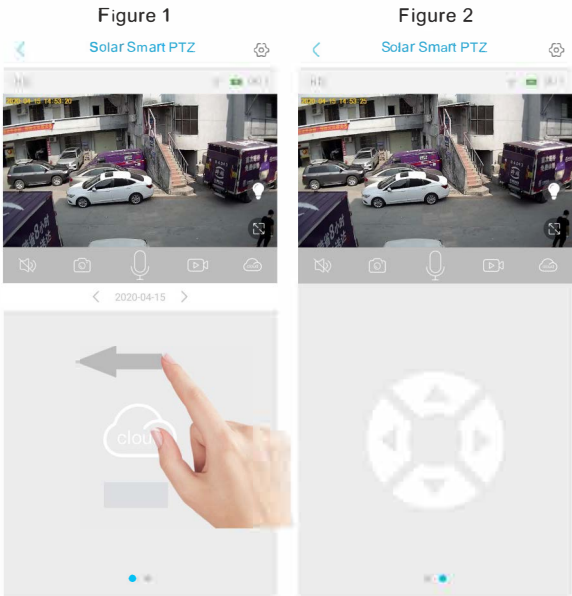


5. Control Rotation

This feature is only used for the following devices:

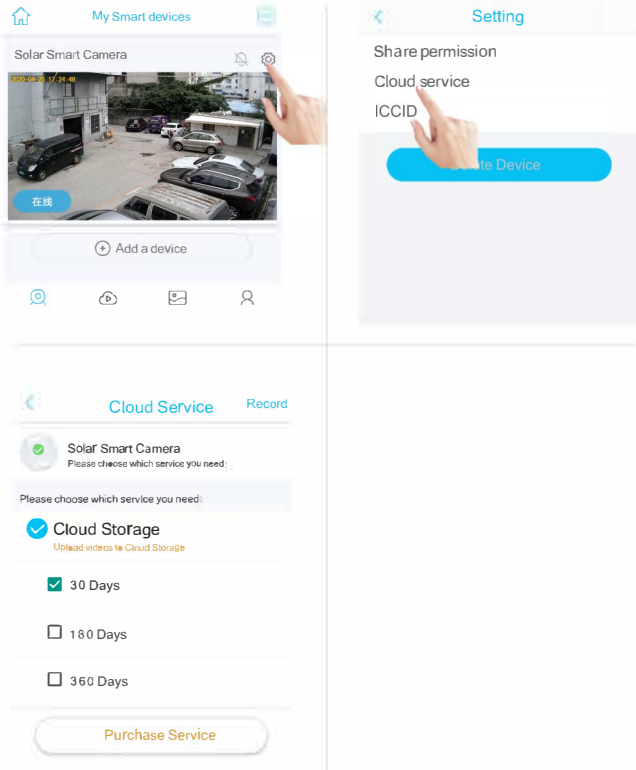


- Open the app, and after entering the screen, as shown in Figure 1, press and hold the screen with your finger and slide to the left to switch to the control Button for camera rotation, as shown in Figure 2;
- "Click" the direction key to control the rotation of the equipment. Due to the network, there is a slight delay in controlling the rotation camera, it's normal phenomenon.

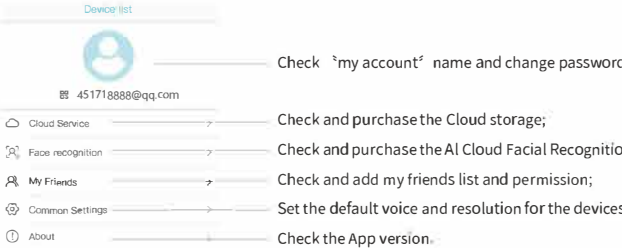
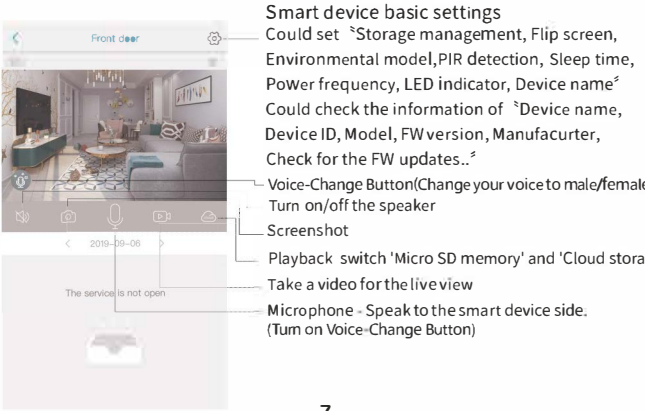
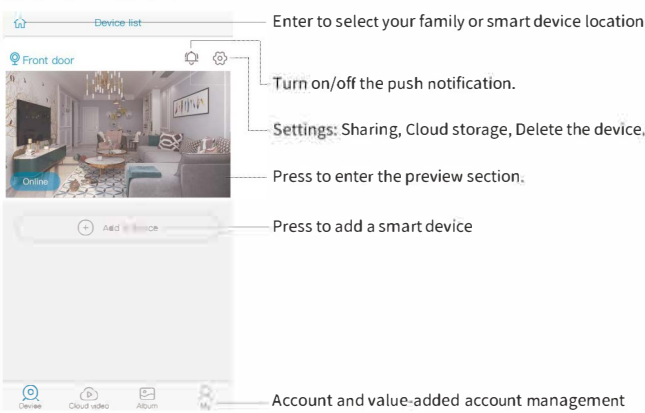


5. Cloud service & Face recognition

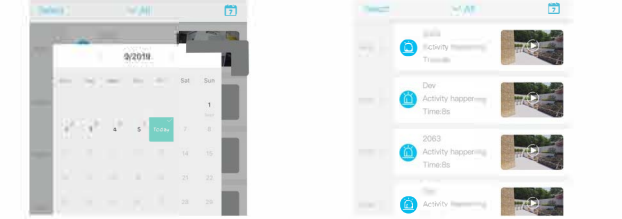
- Open the App, Find the setting button in the top right corner in "My Smart device"
- Click "cloud service" to enter the purchase interface and purchase services according to your own needs



6. USING THE APP



Click the "Calendar" icon on the right top corner, then choose the date to playback the videos from cloud storage.



7. SPECIAL NOTES!

- The device is equipped with a rechargeable lithium battery. The battery life will be affected by the device wake-up time and the number of wake-ups. Therefore, the PIR sensor alarm detection function is used in an environment with a lot of people. It is recommended to turn off or set the device to low sensitivity to reduce device wake-up and call times extend battery life. When the battery is low, please charge the battery immediately.
- Keep the device in range of your router. Make sure the device is placed close to the Wi-Fi router. If there has to be thick or insulated objects between the device and the Wi-Fi router, which may lead to weak Wi-Fi signal, please make sure the Wi-Fi signal is in good level before you start using the device.
- It is a delicate device with low power consumption design. Everytime the device is awakened and will work for few seconds. After that, the device will enter standby mode to save power. You can set the work time in the app settings.
- Because the mainland China does not receive Google's system push messages, you need to open the app's self-starting function in your phone to receive push messages.
- This device provides one month of free cloud storage. If you need to continue using value-added services after the trial period expires, you need to purchase them in the app.
- In the mobile phone settings, all permissions of app should be turned on, including location permission, notification permission, APP keeping background running and starting, etc

FCC WARNING

This device complies with part 15 of the FCC Rules. Operation is subject to the following two conditions: (1) this device may not cause harmful interference, and (2) this device must accept any interference received, including interference that may cause undesired operation.

Any changes or modifications not expressly approved by the party responsible for compliance could void the user's authority to operate the equipment.

NOTE: This equipment has been tested and found to comply with the limits for a Class B digital device, pursuant to Part 15 of the FCC Rules. These limits are designed to provide reasonable protection against harmful interference in a residential installation. This equipment generates, uses and can radiate radio frequency energy and, if not installed and used in accordance with the instructions, may cause harmful interference to radio communications. However, there is no guarantee that interference will not occur in a particular installation.

If this equipment does cause harmful interference to radio or television reception, which can be determined by turning the equipment off and on, the user is encouraged to try to correct the interference by one or more of the following measures:

- Reorient or relocate the receiving antenna.
- Increase the separation between the equipment and receiver.
- Connect the equipment into an outlet on a circuit different from that to which the receiver is connected.
- Consult the dealer or an experienced radio/TV technician for help.

To maintain compliance with FCC's RF Exposure guidelines, This equipment should be installed and operated with minimum distance between 20cm the radiator your body: Use only the supplied antenna.