



OPERATING INSTRUCTIONS | DIGITAL-TO-ANALOG CONVERTER

EL DAC II+

SUPPORT

ONLINE

CONTACT@JDSLABS.COM
[JDSLABS.COM/SUPPORT](https://www.jdslabs.com/support)

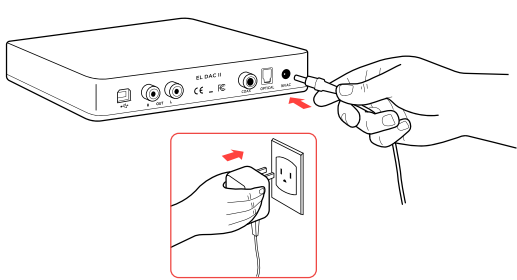
BY PHONE

314-252-0936
9:30AM-6PM CST,
MONDAY THROUGH FRIDAY

BY MAIL

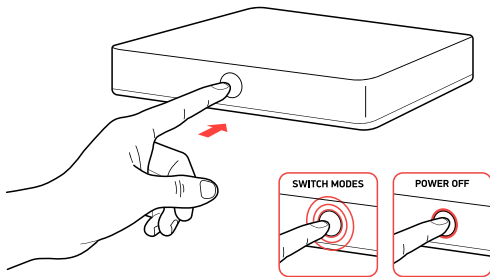
909 N BLUFF RD
COLLINSVILLE, IL 62234
UNITED STATES

QUICK SETUP



STEP 01

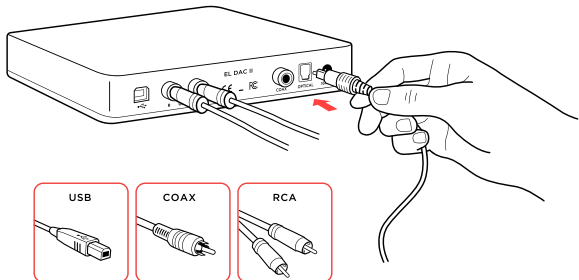
Connect AC power adapter to rear power jack, then connect to wall outlet



STEP 03

Touch button on front to power on, then:

- Tap mode button to select input
- Tap and hold to power off



STEP 02

Connect cables to your desired digital audio players: USB, TOSLINK, or coaxial

M O D E S



Your PC will only recognize the USB device while EL DAC II is set to USB mode, indicated by blue light.

CONFIGURATION

Connectivity

EL DAC II accepts three methods of digital input:

USB	16/44.1k thru 32/384kHz**
Coaxial S/PDIF	16/8kHz thru 24/192kHz*
TOSLINK	16/8kHz thru 24/192kHz*

Maximum RCA Output voltage is 2.0VRMS

* Many coax and optical sources are unable to reliably transmit at 192kHz.

** Windows 7 supports 24/192kHz maximum.

Listening Tips

For maximum signal fidelity, set the DAC to at least 24-bit audio and adjust digital volume slightly below 100% at your computer. Only control volume from your amplifier.

Listen safely to conserve your hearing:
www.hearingloss.org

To ensure an optimal noise floor, always position audio equipment as far away as possible from wireless devices.

Operating Care

Use gentle force when touching the mode button, and when inserting or removing cables.

Set sampling rate to the highest integer multiple of your music collection. For example, use 176.4kHz for a collection of 44.1k or 88.2k or 176.4kHz files. Use 192kHz for a collection of 48k or 96k or 192k audio files. Alternatively, you may install the optional XMOS drivers in Win10 for exclusive WASAPI mode.

EL DAC automatically selects appropriate sampling rate in coaxial or optical modes.

SETUP

Computer Setup

EL DAC II requires no drivers in Windows 10, Mac OS, Linux, and modern version of iOS and Android. You may download drivers for Win7/8 from jdslabs.com/drivers. These drivers may optionally be installed in Win10 for WASAPI support. Be sure to select your new DAC as the default playback device:

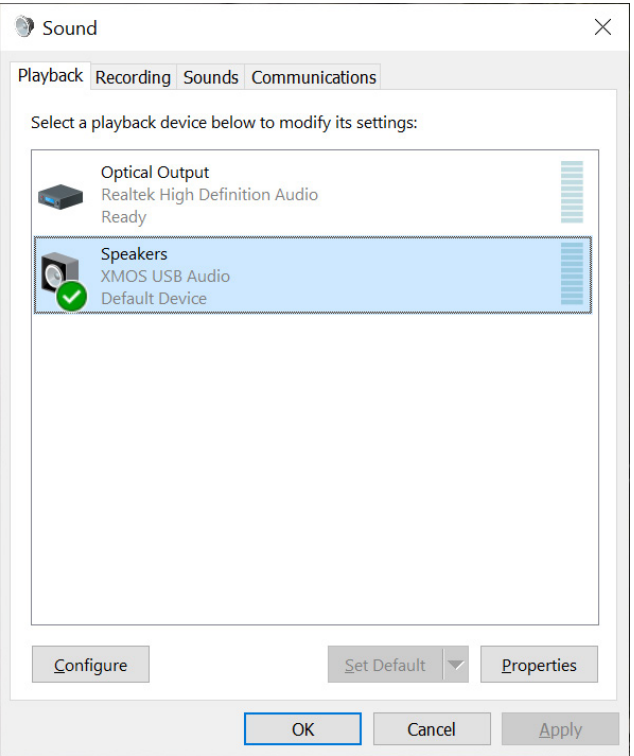
Windows 7/8/10

Right click the volume icon in your taskbar and choose Sound --> Playback. Click the XMOS or JDS Labs audio device, then choose “Set Default”. For best experience, also configure Properties:

- Enhancements: Check “Disable all enhancements”
- Advanced: See Listening Tips

Mac OS X

Ensure JDS Labs audio device is selected from Audio Devices.



Troubleshooting

No USB device or “Failed to Play Audio”

Cause: USB Device is not initialized.
Solution: Tap mode button 3x to cycle through all modes and reset the USB device.

No sound in one channel

Cause: Bad cable, or incorrect computer settings.
Solution: Check balance settings; try another headphone or RCA cable. Some Mac OS X systems will pan audio to the Left channel upon initial connection of a DAC. User must restore balance to center.

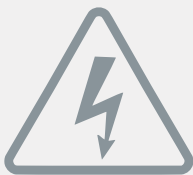
Audio is muted after resuming from sleep or hibernate in Windows 10

Cause: Microsoft USB Audio 2.0 driver bug.
Solution: Install XMOS drivers, as per page 5.

FCC Requirement

Any changes or modifications not expressly approved by the party responsible for compliance could void the user’s authority to operate the equipment. This device complies with Part 15 of the FCC Rules. Operation is subject to the following two conditions:
(1) this device may not cause harmful interference, and
(2) this device must accept any interference received, including interference that may cause undesired operation.

Note: This equipment has been tested and found to comply with the limits for a Class B digital device, pursuant to Part 15 of the FCC Rules. These limits are designed to provide reasonable protection against harmful interference in a residential installation. This equipment generates, uses, and can radiate radio frequency energy, and if not installed and used in accordance with the instructions, may cause harmful interference to radio communications. However, there is no guarantee that interference will not occur in a particular installation. If this equipment does cause harmful interference to radio or television reception, which can be determined by turning the equipment off and on, the user is encouraged to try to correct the interference by one or more of the following measures:
– Reorient or relocate the receiving antenna.
– Increase the separation between the equipment and receiver.
– Connect the equipment into an outlet on a circuit different from that to which the receiver is connected.
– Consult the dealer or an experienced radio/TV technician for help.



POWER ADAPTERS

ATTENTION: Incorrect power adapters can result in capacitor explosion hazards and device damage. Only use the power adapter included with your EL DAC:

Type: AC-to-AC Transformer	Output Voltage: 15-16 VAC
Current: Minimum 500mA	Connector: 2.1x55.mm (ID x OD)