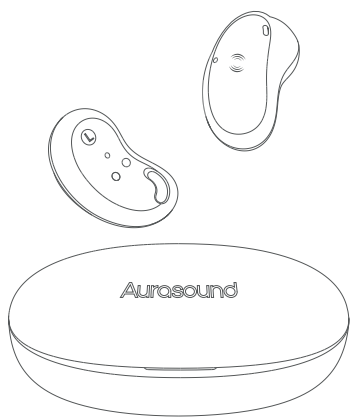


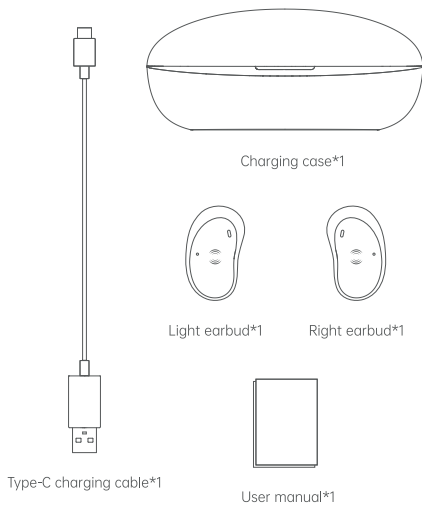
Aura BEANbuds

User Manual



FCC ID: 2A3MH-BEAN2

Packing List



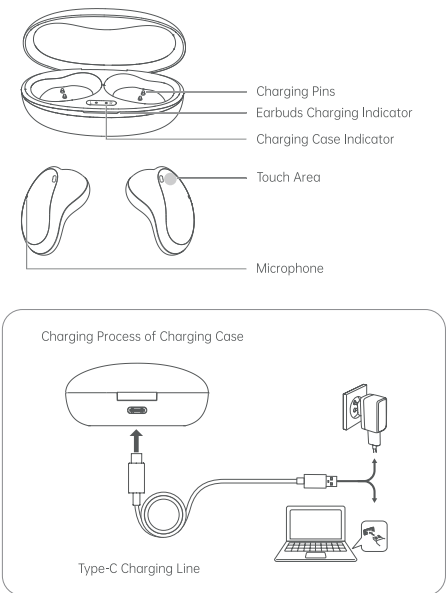
Specifications

Earbuds	
Product name	Wireless headset
Bluetooth version	5.3
Communication distance	10m
Water proof level	IPX4
Horn	10mm moving coil unit*2
Frequency response	20Hz—20kHz
Sensitivity	108dB ±3dB SPL (at 1kHz/1mW)
Impedance	16Ω±15%
Supported protocols	HFP/HSP/A2DP/AVRCP/AAC
Microphone sensitivity	-42dB±3dB (at 1kHz ref 1V/Pa)
Microphone frequency response	20Hz—20kHz
Audio coding	SBC/AAC
Battery life (with charging case)	32H
Charging time	2H
Battery capacity	50mAh*2
Weight	4.7g

Charging Case

Charging port	Type-C
Charging time	2H
Battery capacity	320mAh
Charging times	full charge 2.5times for earbuds
Weight	26.2g

Product Introduction



LED Indicators & Controls

Light Indicator

Status	Indicator light of Earbud	Indicator light of charging case
Earbud in case	Flash*3	/
Earbud out of case	Light off	/
Open charging case	/	Solid light for 5 seconds
Close charging case	/	/
Charge	/	Flash slowly
Full power	/	White light solid light
Battery<20%	/	Flash quickly

Earbuds Controls

Game / Music mode	L / R Earbuds
Play/Pause	2-tap on either earbud
Skip to previous track	Press 2 sec on L earbud
Skip to next track	Press 2 sec on R earbud
Volume +	1-tap on R earbud
Volume -	1-tap on L earbud
Reset	Long press 8 sec
Music/Game mode	3-tap on either earbud

Taking Calls	L / R Earbud
Activate Siri or other Voice Assistant	4-tap on either earbud
Answer the Call	2-tap on either earbud
Reject an incoming call	Press 2 sec on either earbud
End the Call	2-tap on either earbud
Volume +	1-tap on R earbud
Volume -	1-tap on L earbud

Pairing

Getting Started

Note: When using for the first time, please remove the protective film from the charging case. And charge the earbuds, it takes about two hours to fully charge.

Turn On / Off

Long press the control panel of the earbuds for 5 seconds to turn on/off. (Both the left and right earbuds can be independently turned on/off or connected.)

First Pairing

- Open the charging case and put on the earbuds. You will hear "power on".
- Turn on the Bluetooth panel on the device you want to pair. Look for: "Aura BEANbuds"
- Select "Aura BEANbuds" and click "Pairing". You will hear "connected" for successful pairing.

Second Pairing

After the initial pairing, the earbuds will auto-connect to the paired device via Bluetooth when you put them on, and you will hear a prompt tone saying "connected".

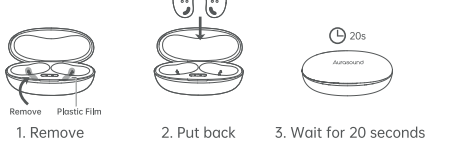
Using the Left/Right Earbud Only

Put on single earbud (R/L) and pair it with your device using the pairing steps outlined above.
Long press for 5 seconds to control the power on/off.

Factory reset

To reset the earbuds to their factory settings and clear all pairing memories of paired devices, tap either earbud 5 times until you hear the "denden" prompt.

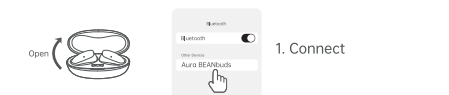
Wake Up



Wear



Connect



Q&A

Earbud bluetooth cannot be searched or lost connection.

- Place the earbuds inside the charging case, close the lid, wait for 8 seconds, and then reopen the lid to initiate pairing.
- Refreshing or restarting requires connect the device's Bluetooth (phone/computer).
- 5-tap on either earbud to restore the earbuds to factory setting, then pairing again.

The earbuds cannot charge.

- Please check if the charging case has power.
- Please check if there are any foreign objects in the earbuds placement area of the charging case.
- The rated input of the charging case is 5V=200mA. Do not use high-power adapter for charging.

Why can listen to music but not make or receive phone calls?

It may be that the "headset call audio" switch on your phone is not turned on. You need to turn it on in your phone's settings.

Why is the sound weak?

It may be that the Earbuds are not wear in deeply enough. Please rotate the earbuds and insert them as deeply as possible into the ear canal for better sound. Check the wearing display picture.

I am unable to find a solution to the issue listed.

Kindly contact our customer service team online via the purchase order page. We will respond within 24 hours. Thank you for your understanding and cooperation.

Warm tips: the volume shall not be too high in daily use, otherwise it is easy to damage your hearing. Please develop a good listening habit. Take off your headset every hour to let your ears relax and rest.

Names and contents of hazardous substances in the product

Parts name	Hazardous substances					
	Lead	Mercury	Cadmium	Hexavalent chromium	Polybrominated biphenyls	Polybrominated diphenyl ethers
Earbuds	x	○	○	○	○	○
Charging case	x	○	○	○	○	○

This table is prepared according to SJ/T 11364.

○ : It means that the content of the toxic and hazardous substance in all the homogeneous materials of the component is below the limit requirements specified in GB/T 26572.

x : It means that the content of the hazardous substance in a homogeneous material of the component exceeds the limit requirements specified in GB/T 26572.

Note: the product adopts the environmental protection design concept to effectively control the hazardous substances. "X" indicates that the hazardous substances cannot be replaced due to the limitation of technical development level.

Environmental friendly service life

Identification refers to the period (ten years) during which the harmful substances in electronic and electrical products will not leak or mutate under normal use conditions, and the user's use of the electronic and electrical products will not cause serious pollution to the environment or serious damage to people and property.



Notes

- Please do not put the product in any place with high temperature, humidity, strong acid, etc., so as to avoid failure.
- If the product is not used for a long time, please pay attention to charging the charging bin in time to avoid any effect on the battery service life.
- Improper battery replacement may lead to an explosion risk. It can only be replaced by the same type of battery.

FCC Statement BT

NOTE: This equipment has been tested and found to comply with the limits for a Class B digital device, pursuant to part 15 of the FCC Rules. These limits are designed to provide reasonable protection against harmful interference in a residential installation. This equipment generates uses and can radiate radio frequency energy and, if not installed and used in accordance with the instructions, may cause harmful interference to radio communications. However, there is no guarantee that interference will not occur in a particular installation. If this equipment does cause harmful interference to radio or television reception, which can be determined by turning the equipment off and on, the user is encouraged to try to correct the interference by one or more of the following measures:

- Reorient or relocate the receiving antenna.
- Increase the separation between the equipment and receiver.
- Connect the equipment into an outlet on a circuit different from that to which the receiver is connected.
- Consult the dealer or an experienced radio/TV technician for help.

Changes or modifications not expressly approved by the party responsible for compliance could void the user's authority to operate the equipment.

This device complies with Part 15 of the FCC Rules. Operation is subject to the following two conditions:

(1) this device may not cause harmful interference, and (2) this device must accept any interference received, including interference that may cause undesired operation.

