

User's Manual

Product introduction:

This Bluetooth Product, compliant to Bluetooth 5.1, Bluetooth Low Energy System, Suitable for digital transparent transmission .

Product picture:



Steps for usage:

The magnet is attached to the crank and is directly opposite to the arrow of the Bluetooth box, see the picture below

1 Pull out the black insulating sheet of the Bluetooth device, at this time, the red light of the Bluetooth device flashes once in 1 second to indicate that it is turned on

2 Turn on the bluetooth of the mobile phone and open the corresponding APP, the mobile APP will automatically pair with the bluetooth box.

After the pairing is successful, the red light of the Bluetooth device will flash once every 5 seconds.

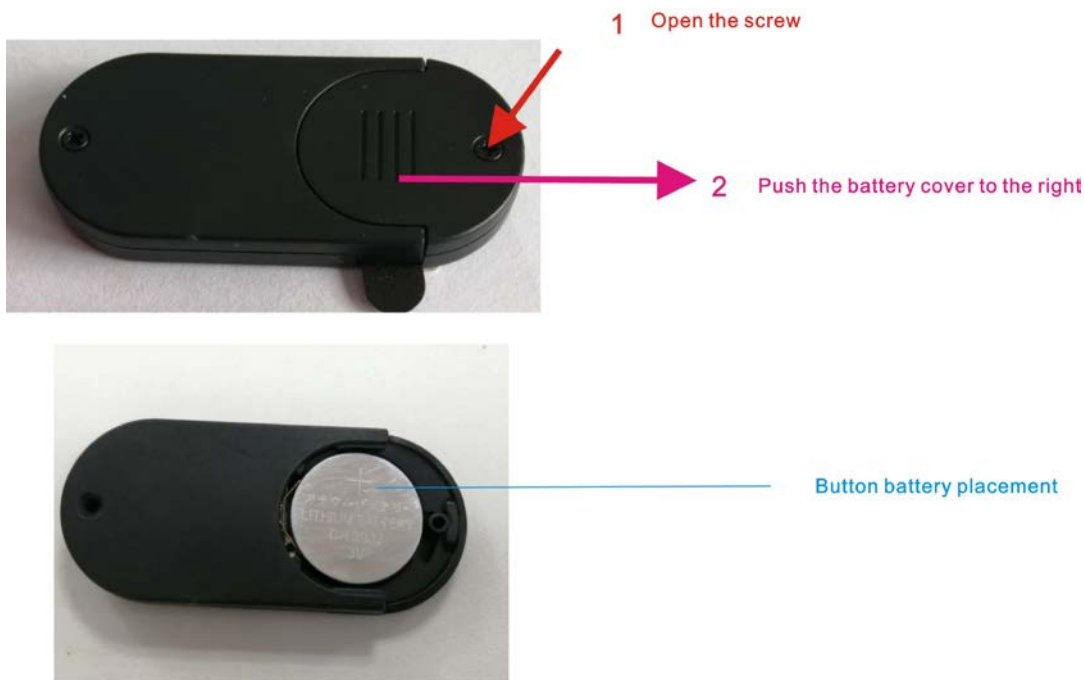
3 The magnet is swiped across the corresponding position in the middle of the Bluetooth device, and the Bluetooth device instantly transparently transmits data information to the mobile APP.



Note: The magnet cannot be swept across from the beginning to the end between the two screws of the Bluetooth box, which may cause inaccurate transmission data.

4 When the Bluetooth device is used for more than 3 months, or the Bluetooth device is disconnected, the battery can be replaced

How to replace the battery



FCC Warning

This device complies with part 15 of the FCC Rules. Operation is subject to the following two conditions:(1) This device may not cause harmful interference, and (2) this device must accept any interference received, including interference that may cause undesired operation.

Any Changes or modifications not expressly approved by the party responsible for compliance could void the user's authority to operate the equipment.

This equipment has been tested and found to comply with the limits for a Class B digital device, pursuant to part 15 of the FCC Rules. These limits are designed to provide reasonable protection against harmful interference in a residential installation. This equipment generates uses and can radiate radio frequency energy and, if not installed and used in accordance with the instructions, may cause harmful interference to radio communications. However, there is no guarantee that interference will not occur in a particular installation. If this equipment does cause harmful interference to radio or television reception, which can be determined by turning the equipment off and on, the user is encouraged to try to correct the interference by one or more of the following measures:

- Reorient or relocate the receiving antenna.**
- Increase the separation between the equipment and receiver.**
- Connect the equipment into an outlet on a circuit different from that to which the receiver is connected.**
- Consult the dealer or an experienced radio/TV technician for help.**

The device has been evaluated to meet general RF exposure requirement. The device can be used in portable exposure condition without restriction.