

OUTDOOR SMART PADLOCK PRODUCT MANUAL



Fingerprint
Unlock



Outdoor
use



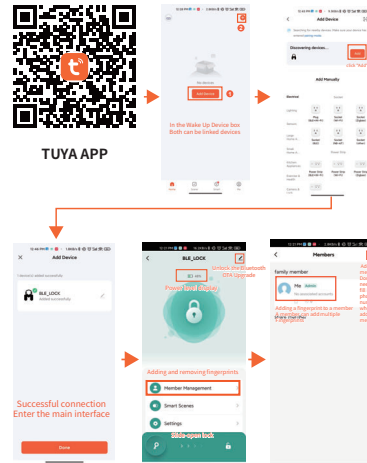
APP
Management

CE FC IP68 RoHS

LOCK SETTINGS

(I) Binding cell phone

Download Tuya APP and turn on Bluetooth on your phone, bind the lock to your phone according to the flow below, add members, manage fingerprints, view power and unlock records on the APP.



(II) recording fingerprints

In addition to using the app, you can also enter fingerprints directly on the lock. The first 2 fingerprints entered by default are the administrator fingerprints.

1. use the administrator fingerprint long press for 5 seconds (the initial state can be pressed with any fingerprint), wait for a green light, and then release the finger;
2. At this time will light up the blue light, press the finger, read successfully will flash the green light, unsuccessful will flash the red light, and then the light goes out;
3. after releasing the finger, will again light blue, continue the operation of the previous step, press 6 times with different angles of finger.
4. After the green light is on for 2 seconds, it will turn to blue light and start the registration of the next fingerprint.
5. If you do not need to register fingerprints again, after 5 seconds of no operation, the blue light will turn off and you will exit the registration status.

Caution:

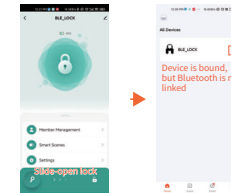
- (1) The first use need to be fully charged first, charging please use no more than 5V charging adapter and the original charging cable to prevent damage to the battery.
- (2) In the initial state, any cell phone and fingerprints can open the lock, you must bind your cell phone and record fingerprints before use to prevent theft.
- (3) The capacity of fingerprints is 20, if you still want to register new fingerprints after recording, you need to delete the old fingerprints or initialize and delete all data.

- (4) It is recommended to register more than 3 fingerprints of different fingers to avoid the inability to open the lock due to accidents such as finger injury and skin loss.
- (5) If the fingerprint becomes insensitive after long time use, you can improve it by re-registering.
- (6) When there is water in the fingerprint sensor or charging port, please dry the water with dry tissue or dry cloth as soon as possible before using the lock.
- (7) When the battery is seriously low or completely out of power, please charge the lock for 30 minutes to 60 minutes before using it normally.

UNLOCKING METHOD

1) Tuya APP Unlock

Open the cell phone Bluetooth, click into the APP, after successfully linking the lock, slide to unlock it, it will automatically disconnect after 20 seconds of unlocking, reconnecting requires touching the fingerprint collector on the padlock to activate the padlock to send a signal.



2) Fingerprint unlocking

Place your finger on the fingerprint collector, the fingerprint is correct, the green light is on and the lock opens, the green light goes off after 4 seconds and the lock closes. Fingerprint error, will flash a red light. If the battery is low, it will flash the green light, then flash the red light three times (indicating insufficient power), and then light up the green light again to unlock.

3) Electronic key unlocking

In case of broken fingerprints, or unclear fingerprint information for children or the elderly, please insert the electronic key into the TYPE C socket of the smart padlock, and then touch the fingerprint sensor with any finger to unlock it urgently.

4) Mechanical key unlocking

Open the lock cylinder cover, insert the key completely, at this time you will feel the push from the bottom, rotate 180 degrees counterclockwise to unlock the lock, close the lock hook and then rotate 180 degrees clockwise to pull out the key.

INITIALIZATION SETTINGS

- 1) Link Tuya APP, select Remove Device and delete all data
- 2) Press and hold the fingerprint sensor with the administrator's fingerprint for more than 10 seconds until a red light appears, then lift your finger and press again for confirmation, a green light is on, then the data has been cleared
- 3) Insert the electronic key into the TYPE-C socket of the smart padlock, press and hold the fingerprint sensor with any finger for more than 10 seconds until a red light appears, then lift your finger and press again for confirmation, a green light is on, then the data has been cleared

Caution:

The 2 electronic keys included are the only authorized electronic keys. Other smart padlocks cannot use this electronic key, and other electronic keys cannot be used on this smart padlock. Please keep these electronic keys in a safe place, they are the only supreme authority to manage fingerprint information and APP authorization. The initialization settings will clear the fingerprint information and Tuya APP authorization information from the smart lock, but not the electronic key information.

SECURITY INFORMATION



Failure to follow the safety instructions below may result in fire, electric shock, damage, or other injury

Do not replace any elements of the product or make any modifications

Please do not disassemble this equipment, does not contain any part can be repaired by the user

Only professionally qualified maintenance personnel are allowed to repair this equipment

Only approved adapters can be used, please do not link incompatible adapters

It is strictly forbidden to use hard objects to damage the fingerprint collection surface, resulting in damage to the fingerprint module affecting the normal use of the padlock

Use a soft rag to clean the collection module when there are substances and sweat stains on the collection module

Avoid placing in places easily accessible to children

When the product is not used for a long time, when the fingerprint padlock has no power at all, it should be charged for 2 to 3 minutes before it can be used.

MODEL CATALOG



FCC WARNING

This device complies with part 15 of the FCC Rules. Operation is subject to the following two conditions: (1) this device may not cause harmful interference, and (2) this device must accept any interference received, including interference that may cause undesired operation.

Any changes or modifications not expressly approved by the party responsible for compliance could void the user's authority to operate the equipment.

NOTE: This equipment has been tested and found to comply with the limits for a Class B digital device, pursuant to Part 15 of the FCC Rules.

These limits are designed to provide reasonable protection against harmful interference in a residential installation. This equipment generates, uses and can radiate radio frequency energy and, if not installed and used in accordance with the instructions, may cause harmful interference to radio communications.

However, there is no guarantee that interference will not occur in a particular installation. If this equipment does cause harmful interference to radio or television reception,

which can be determined by turning the equipment off and on, the user is encouraged to try to correct the interference by one or more of the following measures:

- Reorient or relocate the receiving antenna.
- Increase the separation between the equipment and receiver.
- Connect the equipment into an outlet on a circuit different from that to which the receiver is connected.
- Consult the dealer or an experienced radio/TV technician for help.

To maintain compliance with FCC's RF Exposure guidelines, This equipment should be installed and operated with minimum 20cm distance between the radiator and your body: Use only the supplied antenna.