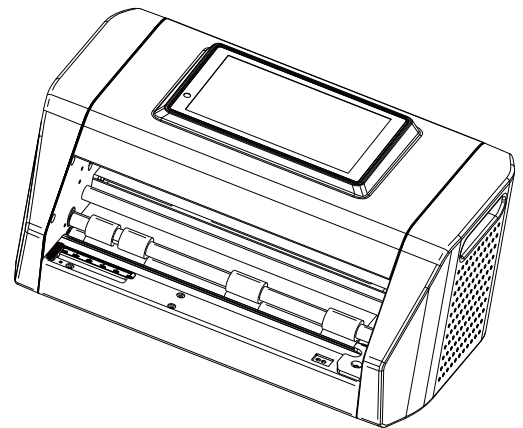
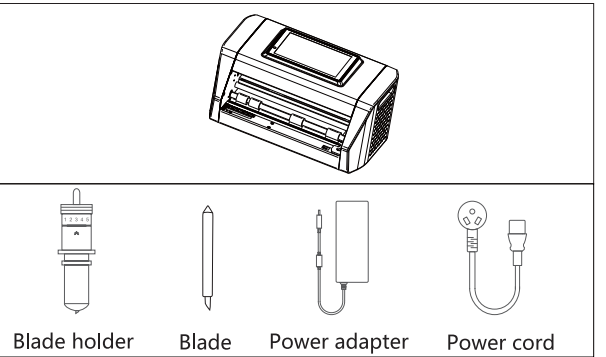


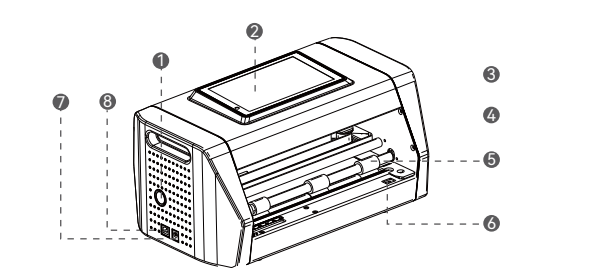
Film Cutting Machine SM2411



Standard Accessories



Appearance and function



- 1 Power button: Turn on the device
- 2 LCD Screen
- 3 Blade holder clamp: fixed blade holder
- 4 Blade holder: Cutting protector sheet film
- 5 Axis: Fix the protector sheet film
- 6 Sensor: Auto feed sheet film
- 7 Power connector
- 8 USB port interface

- 9 Press the top to replace the blade.
- 10 Blade adjustment: Rotate to adjust gear to control the length of the blade tip.
- 11 Blade holde
- 12 Blade tip: Adjust the exposure length accordingly to the material thickness.
* "+" direction means to lengthen blade tip;
* "-" direction means to shorten blade tip.

Instructions

1. Power on

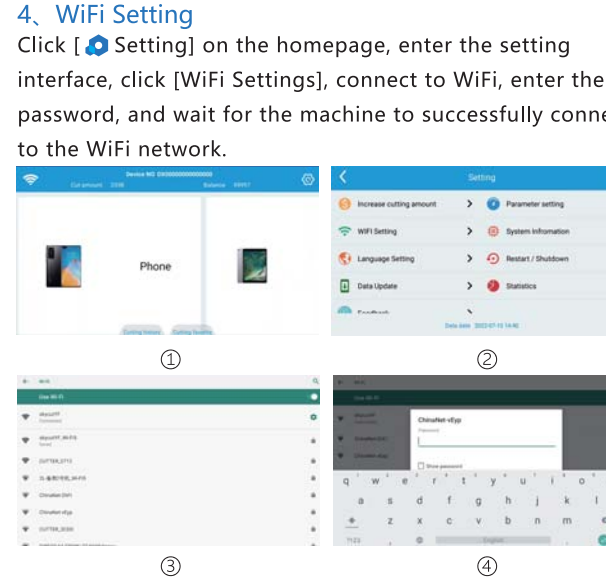
- 1 Connect the power supply with the adaptor and insert to the socket. Use 100-240V AC power supply to make the device operate normally.
- 2 Insert the other end of the adaptor port into the power interface.
- 3 Press the power button to power on the cutter.

2. Install the blade holder & blade
- 1 Open the storage box
- 2 Pull the paddle of holder clamp, adjust the length of the blade tip, and put the blade holder inside (Gear 5 for the blade holder is recommended).
- 3 Push back the paddle and fix the blade holder.
- 4 Cover the storage box.

3. Place materials

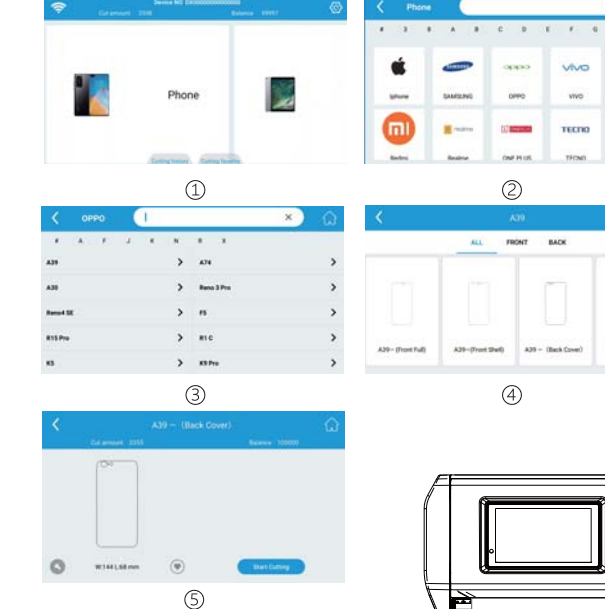
- 1 Prepare a sheet film to be cut, confirm that the protective film is flat and the film layer is complete without bending, folding or missing layers
- 2 Place the sheet film to the area shown.
- 3 The machine will automatically pick up the film paper.
- 4 If need to exchange another sheet film, please click the power on button, the protector film will feed out.

4. WiFi Setting
- 1 Click [Setting] on the homepage, enter the setting interface, click [WiFi Settings], connect to WiFi, enter the password, and wait for the machine to successfully connect to the WiFi network.



5. Start cutting

Select the brand and model of the device to be cut on the homepage and click [Start Cutting] to start cutting.



6. Complete cutting

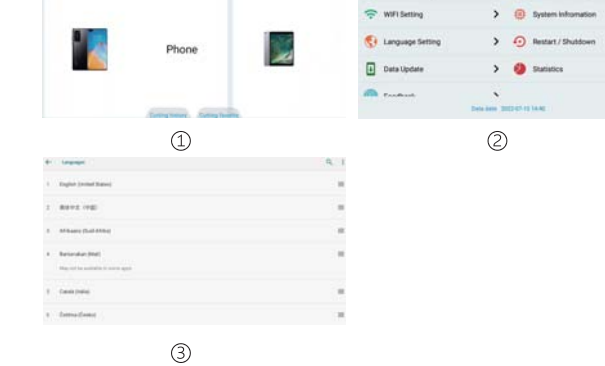
The protector film will be pushed out when the cutting finished.



Machine settings

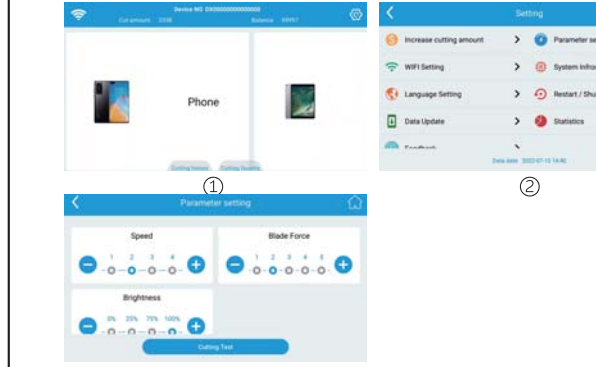
1. Language setting

On the homepage, click [Setting] to enter the setting interface, and click [Language Setting] to switch.



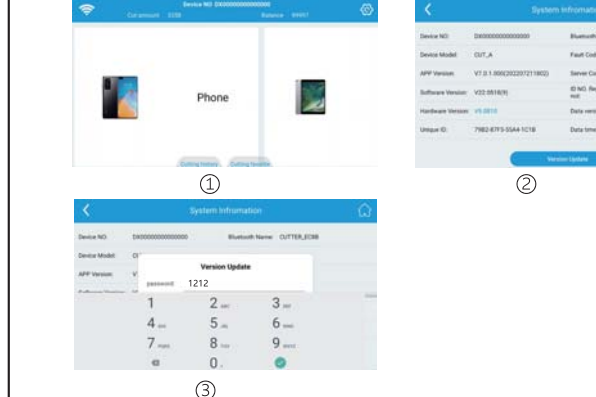
2. Blade force/Speed/Automatic

1 On the home page, click [Setting] to enter the setting interface, click [Force/Speed/Automatic], please adjust according to actual usage.



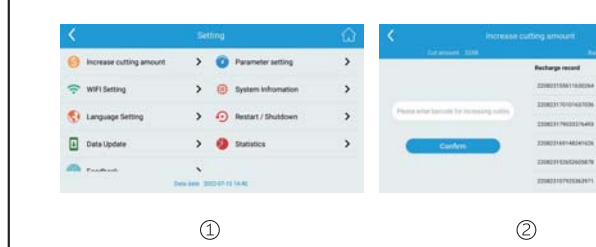
3. Firmware system upgrade

- 1 Tap [Setting] - [System information] on the homepage to update the firmware version. The password is 1212.
- 2 Tap [Setting] - [Restart] on the home page to restart cutter for data updating.



4. Self-help add cutting counting

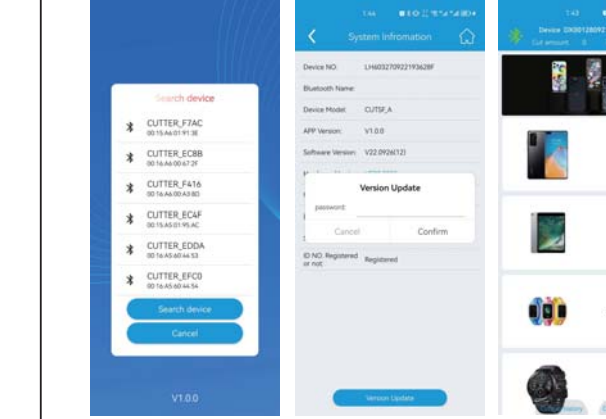
1 Tap [Setting] - [Increment cutting amount] on the home page, and input specific code to increase the cut amount.



Bluetooth APP Control System

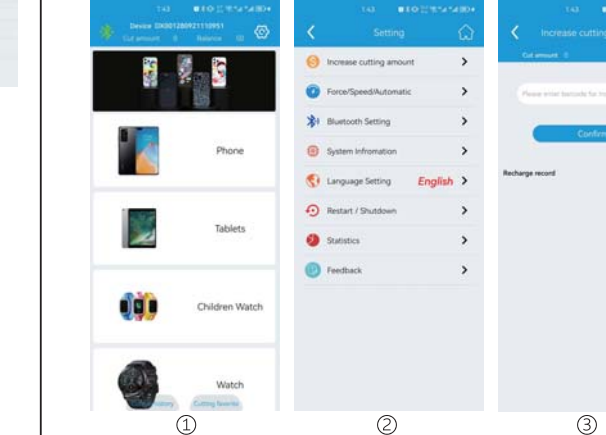
1. APP download link please check with seller.

1. Power on the cutter 2. Run the mobile phone APP application, confirm that the mobile phone's Bluetooth is turned on, find the Bluetooth name of the machine on the page, and then click it. Enter the pairing code 1234 to connect to Bluetooth, and then wait for the machine to successfully connect to Bluetooth.



2. Self-help add cutting counting

1 Tap [Value-added times] on the home page, and input specific code to increase the cut amount or scan the QR code.

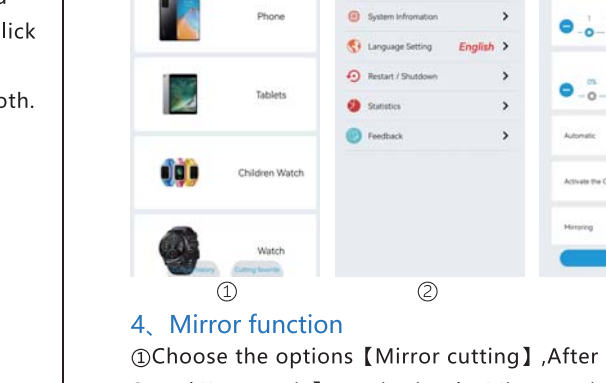


3. Child lock

- 1 Choose the options [Child Lock]. After clicking [Blade/Speed/Automatic], activate the Child lock function
- 2 Choose any model and hold on button "send" 3 seconds for sending to cut

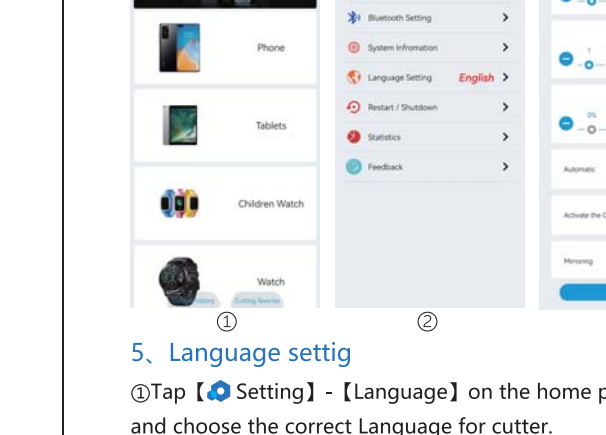
4. Mirror function

1 Choose the options [Mirror cutting], After clicking [Blade/Speed/Automatic], activate the Mirror cutting function.



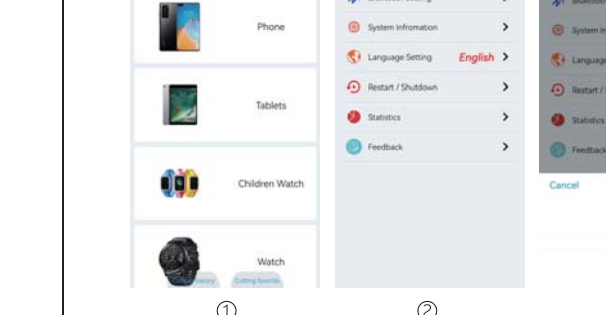
5. Language setting

1 Tap [Setting] - [Language] on the home page, and choose the correct Language for cutter.



6. Blade force/Speed/Automatic

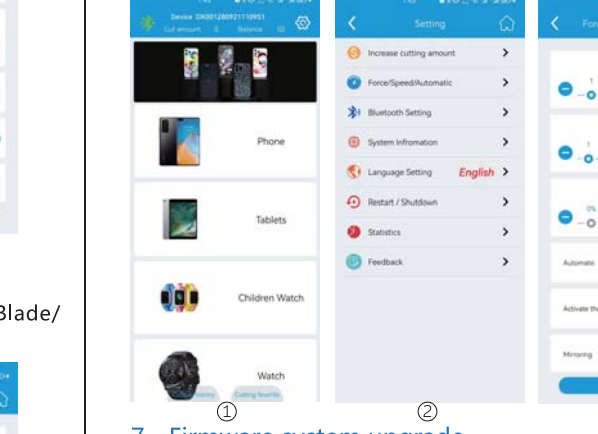
1 On the home page, click [Setting] to enter the setting interface, click [Force/Speed/Automatic], please adjust according to actual usage. (Speed 2, Force 3) .If the auto feed function is not required, turn off automatic.



7. Firmware system upgrade

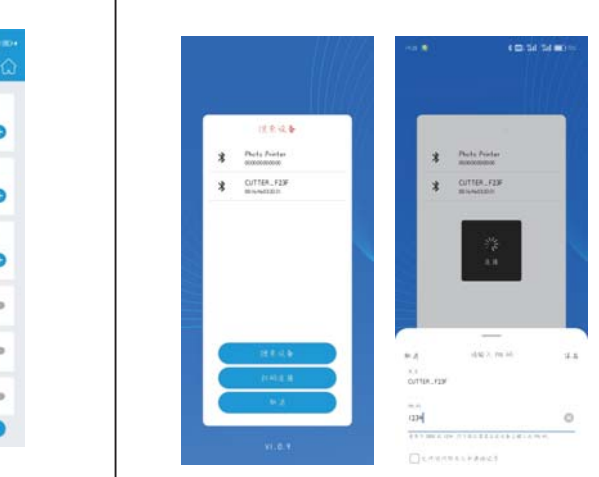
1 Tap [Setting] - [System information] on the homepage to update the firmware version. The password is 1212.

2 Tap [Setting] - [Restart] on the home page to restart cutter for data updating.



2. Connect to the APP

- 1 Turn on Bluetooth, search for the device, and find the machine device name
- 2 Enter the password 1234 or 0000 to connect
- 3 The connection is successful



Specification

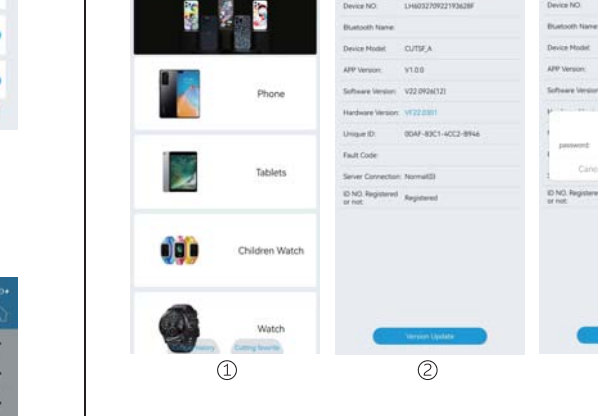
Model	Film Cutting Machine SM2411
Max. media width	215mm
Max. cutting width	196mm
Cutting precision	0.1mm
Repeat precision	0.1mm
Max. straight line cutting speed	300mm/s~500mm/s
Max. curve cutting speed	300mm/s~500mm/s
Max. force	1200g
Connector interface	Bluetooth/WIFI
Input	100V~240V
Power	<100w
Working environment	5~35°C
Packing size	388*302*235mm
Packing gross weight	4.3kg
Net weight	5.3kg

Software APP

1. APP Download

Android: The browser opens to download the QR code

Apple system: Open the Mac App Store to buy and download apps

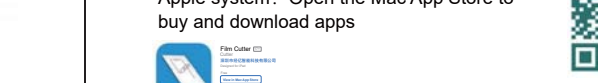


Software APP

1. APP Download

Android: The browser opens to download the QR code

Apple system: Open the Mac App Store to buy and download apps



Safety information

	Never touch the tip of the blade with your fingers. This will hurt your fingers and passivate the blade.
	Never use the cutter when thunderstorm to avoid any damage.
	Fluids or metal objects falling into the cutter may cause fire disaster.
	Don't damage or replace the original supply power randomly, never make the power cable excessive bending forced to pull and bundled or under heavy object, which may damage the power supply and lead electric shock or fire disaster.

Warranty card

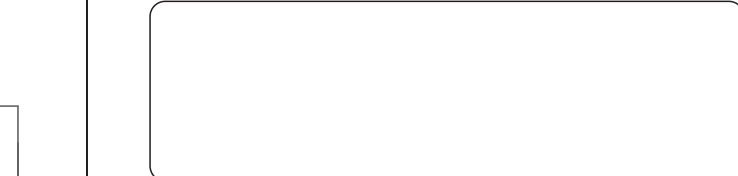
Model NO		Mpid	
Product NO			
Name		Address	
Zip code		Phone	
Date		Invoiceno	
Agent			
Date			

Warranty description

Date	Condition	Processed	Receiver	Repair

Warranty notice

- 1 This warranty card is requested to be kept by the user for maintenance certificate.
- 2 The warranty period is valid for one year from the date of invoice.
- 3 The warranty equipment must be non-artificially damaged and not repaired by personnel not authorized by the company.



This device complies with Part 15 of the FCC Rules. Operation is subject to the following two conditions: (1) this device may not cause harmful interference, and (2) this device must accept any interference received, including interference that may cause undesired operation

This device has been tested and found to comply with the limits for a Class B digital device, pursuant to Part 15 of the FCC Rules. These limits are designed to provide reasonable protection against harmful interference in a residential installation. This device generates, uses and can radiate radio frequency energy and, if not installed and used in accordance with the instructions, may cause harmful interference to radio communications. However, there is no guarantee that interference will not occur in a particular installation. If this device does cause harmful interference to radio or television reception, which can be determined by turning the device off and on, the user is encouraged to try to correct the interference by one or more of the following measures: --Reorient or relocate the receiving antenna. --Increase the separation between the device and receiver. --Connect the device into an outlet on a circuit different from that to which the receiver is connected. --Consult the dealer or an experienced radio/TV technician for help

Changes or modifications not expressly approved by the party responsible for compliance could void the user's authority to operate the equipment

Warnings

This device complies with Part 15 of the FCC Rules. Operation is subject to the following two conditions: (1) this device may not cause harmful interference, and (2) this device must accept any interference received, including interference that may cause undesired operation

This device has been tested and found to comply with the limits for a Class B digital device, pursuant to Part 15 of the FCC Rules. These limits are designed to provide reasonable protection against harmful interference in a residential installation. This device generates, uses and can radiate radio frequency energy and, if not installed and used in accordance with the instructions, may cause harmful interference to radio communications. However, there is no guarantee that interference will not occur in a particular installation. If this device does cause harmful interference to radio or television reception, which can be determined by turning the device off and on, the user is encouraged to try to correct the interference by one or more of the following measures: --Reorient or relocate the receiving antenna. --Increase the separation between the device and receiver. --Connect the device into an outlet on a circuit different from that to which the receiver is connected. --Consult the dealer or an experienced radio/TV technician for help

Warranty description

Date	Condition	Processed	Receiver	Repair

Warranty notice

- 1 This warranty card is requested to be kept by the user for maintenance certificate.
- 2 The warranty period is valid for one year from the date of invoice.
- 3 The warranty equipment must be non-artificially damaged and not repaired by personnel not authorized by the company.

Changes or modifications not expressly approved by the party responsible for compliance could void the user's authority to operate the equipment