

Eight-electrodes
Body Composition Analyzer

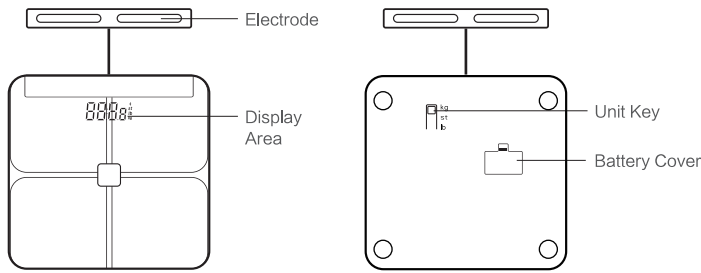
BCA-381BC User Manual

The Company is certified under ISO13485 Quality Management System

Note: This product shall not be used as a medical device product and shall not be used as a basis for medical diagnosis

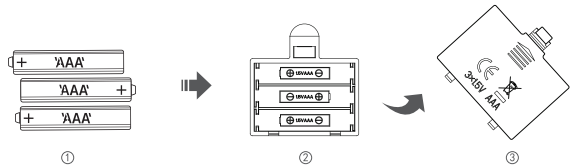
1

1.Appearance



2.Battery Installation and Replacement

- When first use it, install a 3 x AAA battery on the back of the device and pay attention to the positive and negative electrode of the battery.
- During use, if the "Lo" symbol is displayed on the screen, it indicates that the battery is low, please replace the battery.
- If you do not use the device for a long time, please remove the battery.



3.Download and install
the phone app

Scan the QR code on the right to download and install the client directly, Or search for "AiLink" in the application market to download and install.

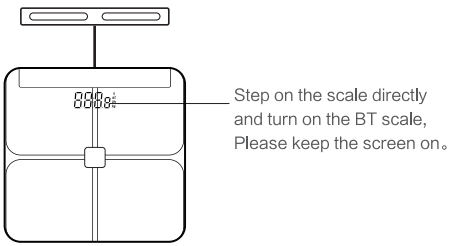


- 1 -

2

4.Register and Pair Device

Open the "AiLink" APP, follow the steps to register an account and submit the user's personal information; after the registration is complete, pair the device according to the app's instructions, and wait for the app to prompt that the pairing is complete (the phone must be turned on Bluetooth before pairing, and Lightly step on the device to turn on, and keep the device's screen light)



5.Get Started

Weight only

Stand on the device and keep your body stable. The device will display the body weight. After the weight is locked, the device will automatically shut down.

Measuring body composition

- Select the appropriate unit setting before use, you can use the unit button on the device; you can also select the unit in the app settings.
- Before starting the measurement, make sure that Bluetooth is turned on and the device is successfully connected to the app.
- Place the device on a flat solid surface, stand with bare feet on the electrode pads of the device, hold the handle firmly with both hands, and maintain an upright posture for measurement. When the weight data is stable and flashing, the data will be transmitted to the app through Bluetooth. At this time, the user can view the measured body composition on the app. The accuracy of the measurement result depends on the posture of the user standing on the device. Please maximize the contact with the electrode pads on the device to ensure the best result.

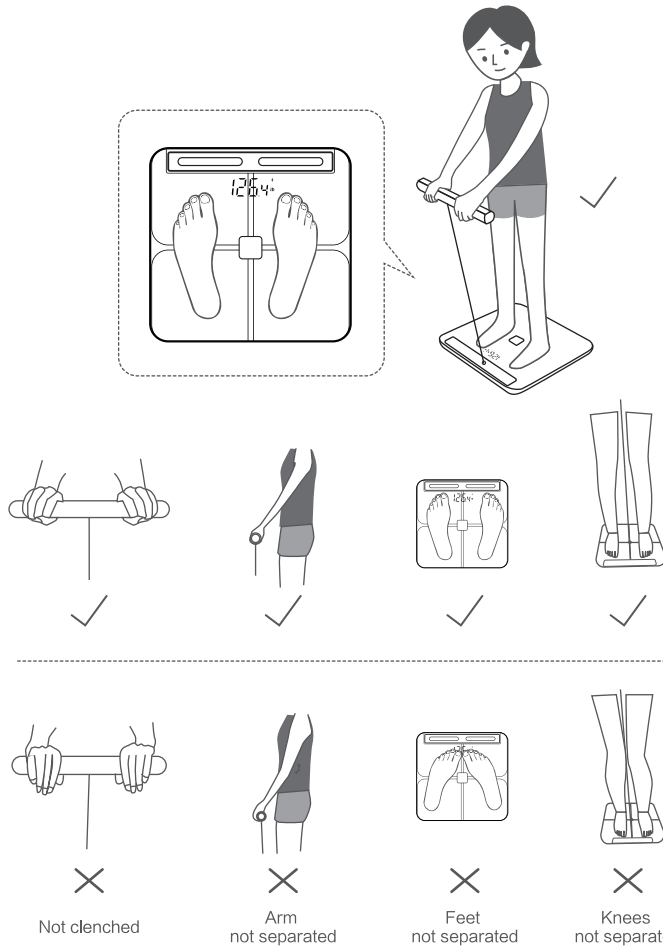
Note

- To ensure the accuracy of the data, it is recommended that each measurement be performed at the same time of day;
- Children under 6 and adults over 100 are temporarily unable to use measurement functions other than weight;

- 2 -

3

Examples of correct and wrong measurement operation



- 3 -

4

6.Error message description



7.Security Information

Before using the equipment, please read the following precautions to ensure the best performance of the equipment and avoid dangerous or illegal situations.

Electronic Device

Do not use this device in places where the use of wireless devices is expressly prohibited, otherwise it will interfere with other electronic devices or cause other dangers.

Impact on medical equipment

- In medical and health care facilities where the use of wireless equipment is expressly prohibited, please follow the regulations and turn off the equipment.
- The radio waves generated by the equipment may affect the normal operation of implanted medical equipment or personal medical equipment, such as pacemakers, cochlear implants, and hearing aids. If you use these medical devices, please consult their manufacturers about the restrictions on using this device.
- When using this device, please keep a distance of at least 15 cm from implanted medical devices (such as pacemakers, cochlear implants, etc.)

Flammable and explosive area

- Do not use this equipment in gas stations (Service stations) or near any flammable and explosive areas such as flammable materials and chemical agents, and follow all instructions. In or around fuel or chemical storage and transportation areas or explosive places, the equipment may cause an explosion or fire.
- Do not store or transport the device and its accessories in the same box as flammable liquids, gases or explosive materials.

Battery safety

- If you do not use it for more than 3 months, please remove the battery, otherwise liquid leakage may occur and cause damage to the equipment or human body.
- If the battery is discolored, deformed, or abnormally heats up during use, charging or storage, please stop using it and replace it with a new battery.
- Do not throw the battery into the flame, otherwise it will cause the battery to catch fire and may explode.
- Please dispose of the battery according to local regulations, and do not dispose of the battery as household garbage. Improper disposal of the battery may cause the battery

- 4 -

5

- to explode.
- Do not allow children or pets to swallow the battery to avoid injury or explosion of the battery.
- Do not drop, crush or puncture the battery. Avoid exposing the battery to high external pressure, which may cause internal short circuit and overheating of the battery.
- Do not use damaged batteries.

Operating environment

- Do not use the device in dusty, damp, dirty, or close to magnetic fields, to avoid internal circuit failure of the device.
- Please use this equipment within the temperature range of 5°C~40°C. When the ambient temperature is too high or too low, it may cause equipment failure.
- Do not place the device near heat sources or exposed fire sources, such as electric heaters, microwave ovens, ovens, water heaters, stoves, candles or other places that may generate high temperatures.
- Do not allow children or pets to play with the device or its accessories to avoid injury to it or cause the device to malfunction or explode.
- Do not use it on wet or slippery surface.
- Do not measure when your body or feet are wet, otherwise it may cause body injury, inaccurate measurement data, water penetration and other malfunctions.

Maintenance

- Please keep the device and its accessories dry. Do not use external heating devices such as microwave ovens or hair dryers to dry them.
- Do not place the device and its accessories in areas where the temperature is too high or too low, otherwise it may cause the device to malfunction, catch fire or explode.
- Do not subject the device and its accessories to strong shocks or vibrations to avoid damage of the device and its accessories and cause equipment failure.
- Before cleaning and maintenance, please stop using this device, close all applications on phone, and disconnect all connections or cables from other devices.
- Do not use chemicals, cleaning agents, or detergents to clean the equipment or its accessories. Please use a clean, dry soft cloth to wipe the device or its accessories.
- Do not disassemble or modify the equipment and accessories without authorization, otherwise the equipment and accessories will not be covered by the company's warranty. If the equipment fails, please call the service hotline.
- If the device collides with a hard object or the device is subject to a strong impact from the outside cause broken screen, do not touch or try to remove the broken part, please stop using it immediately and contact customer service.



- 5 -

6

FCC Markings:

This device complies with Part 15 of the FCC Rules. Operation is subject to the following two conditions: (1) This device may not cause harmful interference, and (2) this device must accept any interference received, including interference that may cause undesired operation.

- NOTE: This equipment has been tested and found to comply with the limits for a Class B digital device, pursuant to Part 15 of the FCC Rules. These limits are designed to provide reasonable protection against harmful interference in a residential installation. This equipment generates, uses and can radiate radio frequency energy and, if not installed and used in accordance with the instructions, may cause harmful interference to radio communications. However, there is no guarantee that interference will not occur in a particular installation. If this equipment does cause harmful interference to radio or television reception, which can be determined by turning the equipment off and on, the user is encouraged to try to correct the interference by one or more of the following measures:
- Reorient or relocate the receiving antenna.
 - Increase the separation between the equipment and receiver.
 - Connect the equipment into an outlet on a circuit different from that to which the receiver is connected.
 - Consult the dealer or an experienced radio/TV technician for help.

Caution: Any changes or modifications not expressly approved by Conair Corporation, the manufacturer of this product and the party responsible for compliance, could void the user's authority to operate the equipment.

FCC ID:2A3HQ-381BC