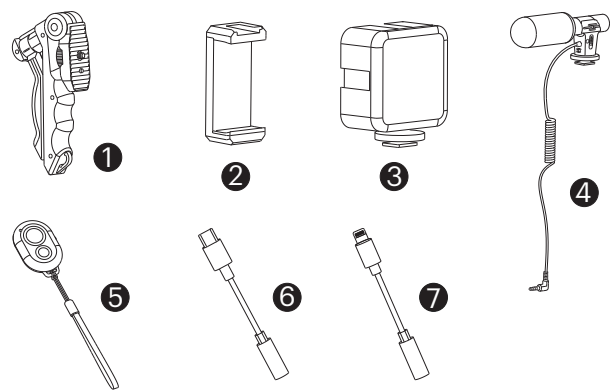




Smartphone Vlogging Kit Quick Start Guide

What's in the Box?

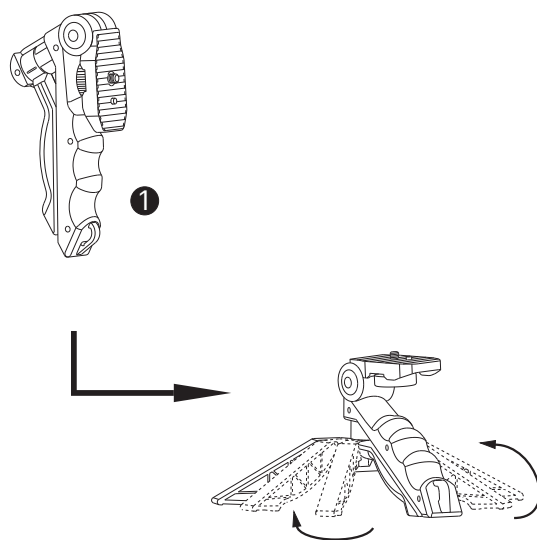
Check to make sure you have everything below.



1. Tripod (x1)
2. Phone clip (x1)
3. LED light (x1)
4. Microphone with 3.5 mm cable (x1)
5. Bluetooth remote shutter with CR2032 button battery (x1)
6. 3.5 mm cable to USB-C connector (x1)
7. 3.5mm cable to Lightning® connector (x1)
8. AA Batteries (LED light) (x2)
9. AAA Battery (microphone) (x1)

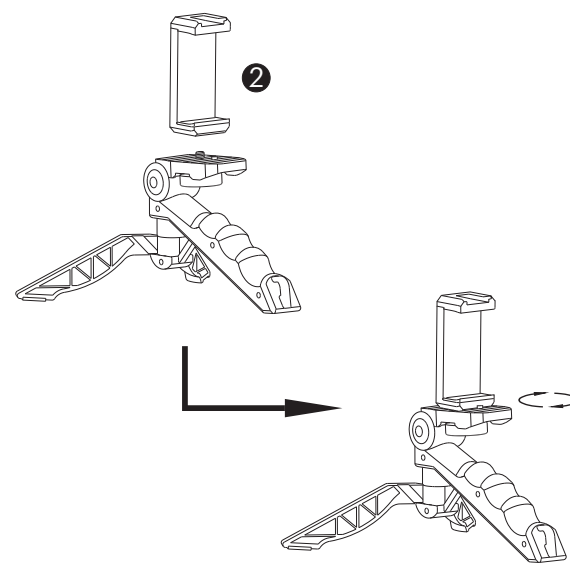
Open The Tripod

01



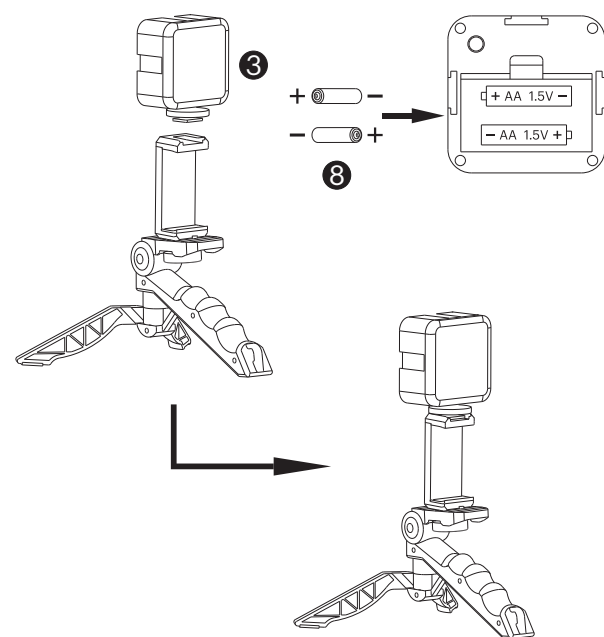
Attach Phone Clip to Tripod

02



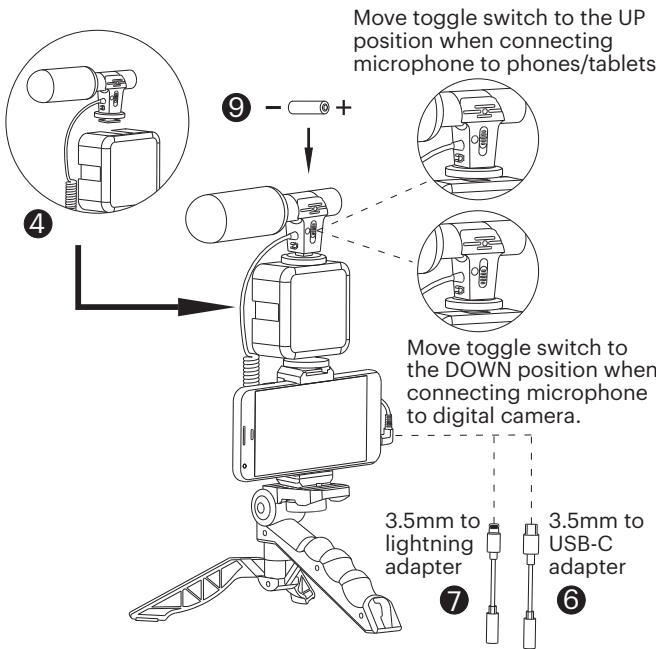
Attach LED Light to Phone Clip

03



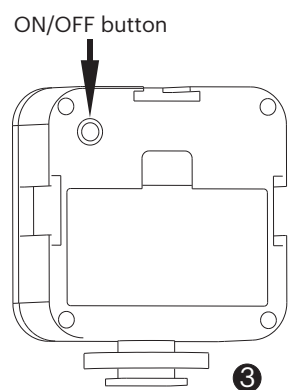
Attach Microphone to LED Light

04

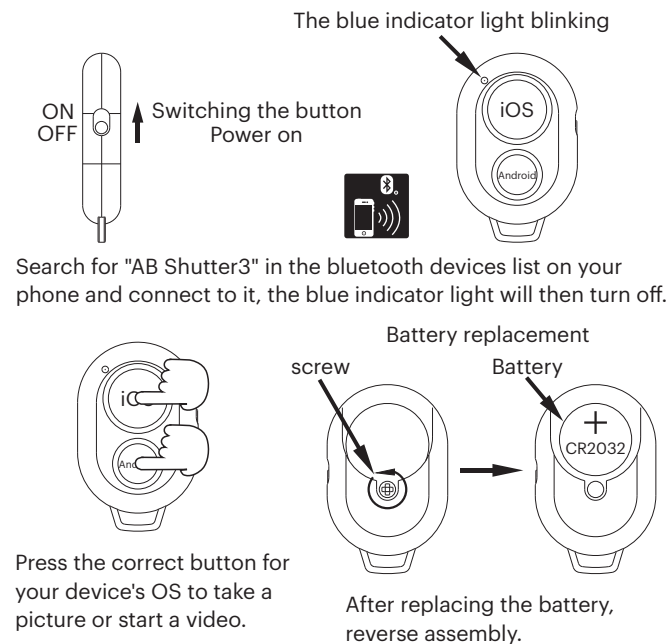


LED Brightness Adjustment

1. Press and hold the ON/OFF button to turn on/off the light.
2. Press the ON/OFF button to adjust the brightness level.



Bluetooth Remote Control Instructions



But Wait ... There's More!

FAQs and Troubleshooting:

1. Q: What is the range of the Bluetooth remote?
A: Bluetooth remote control distance is 33 ft (10 m) max.
2. Q: The remote goes inactive if unused for 10 minutes. How do I reconnect?
A: Click the iOS or Android button and wait for the remote to reconnect.
3. Q: What do I do if remote won't connect?
A: Remove from bluetooth devices list on other phones. Cycle remote power switch and wait for blinking blue light before pairing.

The Fine Print

This device complies with Part 15 of the FCC Rules. Operation is subject to the following two conditions: (1) this device may not cause harmful interference, and (2) this device must accept any interference received, including interference that may cause undesired operation.

Walmart Inc., Bentonville, AR 72716 1-888-516-2630

Warning: Changes or modifications to this unit not expressly approved by the party responsible for compliance could void the user's authority to operate the equipment.

Note: This equipment has been tested and found to comply with the limits for a Class B digital device, pursuant to Part 15 of the FCC Rules. These limits are designed to provide reasonable protection against harmful interference in a residential installation. This equipment generates, uses and can radiate radio frequency energy and, if not installed and used in accordance with the instructions, may cause harmful interference to radio communications. However, there is no guarantee that interference will not occur in a particular installation. If this equipment does cause harmful interference to radio or television reception, which can be determined by turning the equipment off and on, the user is encouraged to try to correct the interference by one or more of the following measures:

The Fine Print

-Reorient or relocate the receiving antenna.
-Increase the separation between the equipment and receiver.
-Connect the equipment into an outlet on a circuit different from that to which the receiver is connected.
-Consult the dealer or an experienced radio/TV technician for help.

Battery Caution

⚠ Do not ingest the battery, Chemical Burn Hazard (The remote control supplied with). This product contains a coin/button cell battery. If the coin/button cell battery is swallowed, it can cause severe internal burns in just 2 hours and can lead to death. Keep new and used batteries away from children. If the battery compartment does not close securely, stop using the product and keep it away from children. If you think batteries might have been swallowed or placed inside any part of the body, seek immediate medical attention. Do not mix old and new batteries and Do not mix alkaline, standard (carbon-zinc) or rechargeable (ni-cad, ni-mh, etc.) batteries.

Need help? We're here for you every day from 7 a.m. - 9 p.m. CST. Give us a call at 1-888-516-2630

Please keep the Instruction Manual for future use.

Nov 10, 2021_V1 FCC ID: 2A3FZ-TWJ-09L

We'd love to hear from you. Scan with your Walmart app and let us know what you think.

