

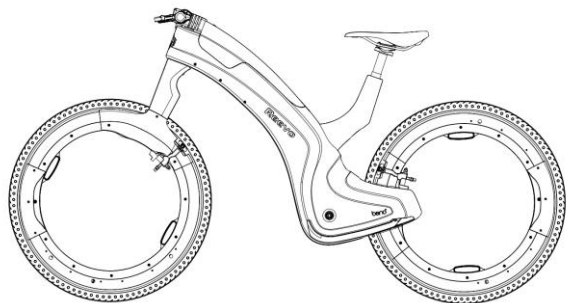
# Reevo

## User's Manual



Welcome  
To  
The  
Family

What's  
in  
the  
box?



**Reevo**



**Crank arms  
and pedals**



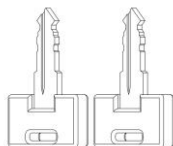
**6mm and 4mm  
Allen key**



**Battery**



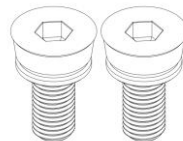
**Battery charger**



**Battery keys**



**User manual**



**Crank bolts**



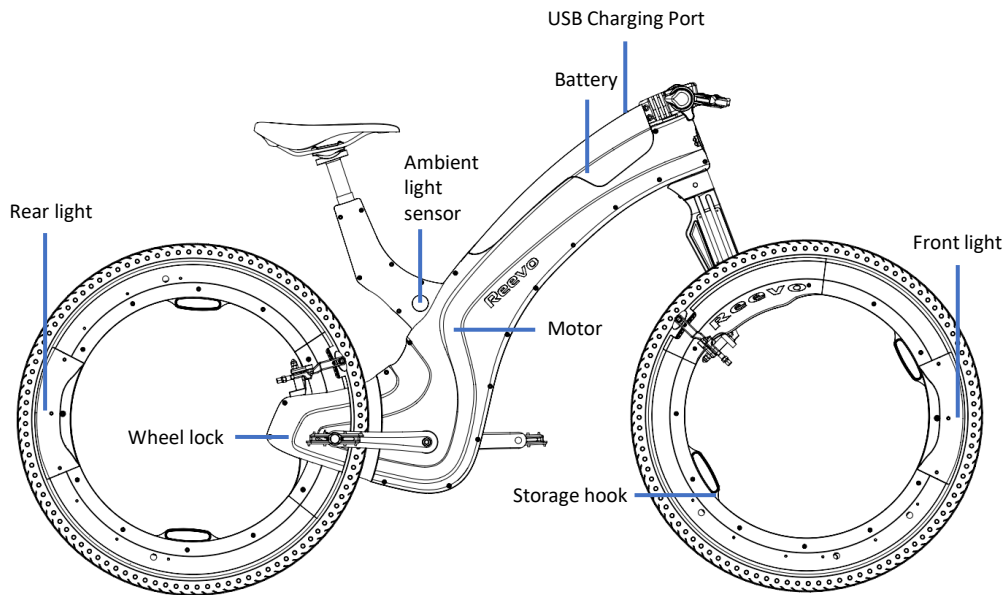
**Fender set  
(Optional)**



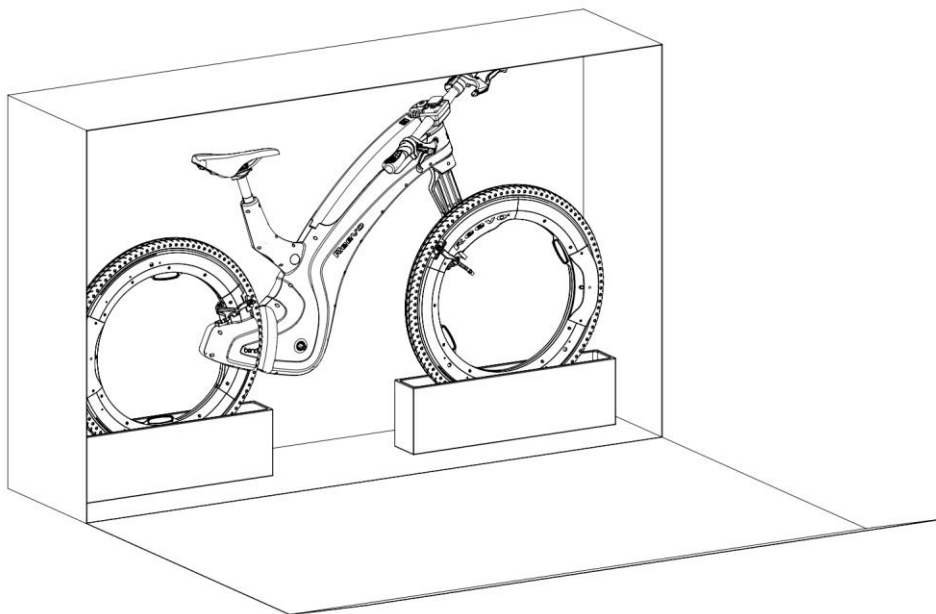
**Electronic bell  
(Optional)**



**Beno bag  
(Optional)**

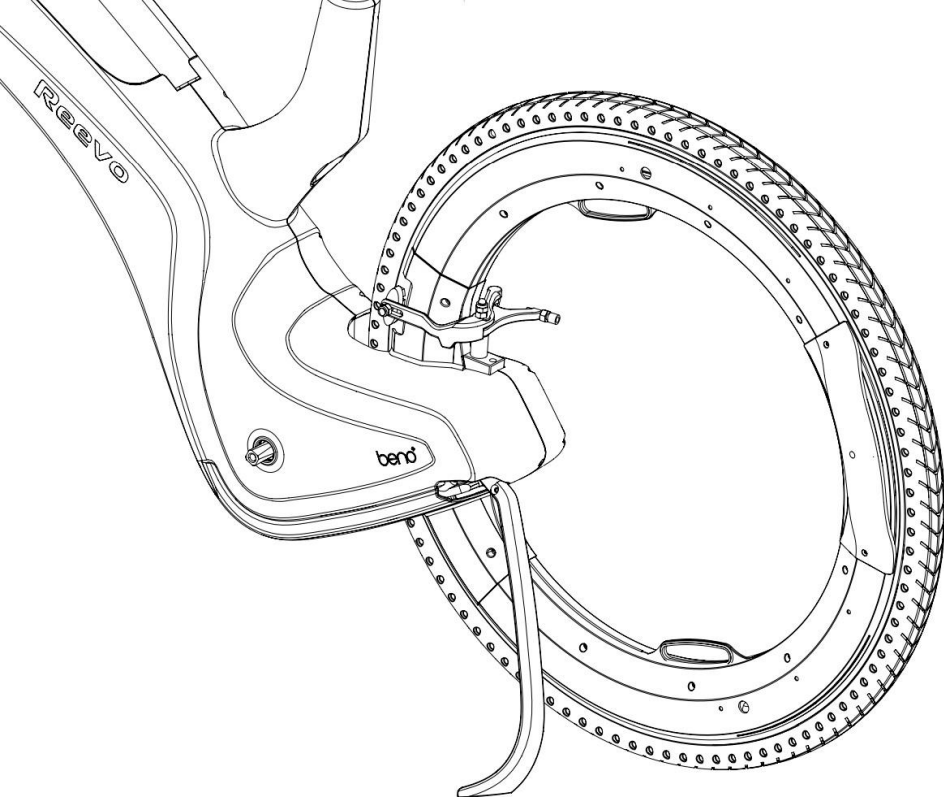


# Assembly



## Step 1

Remove your Revo out of the box.



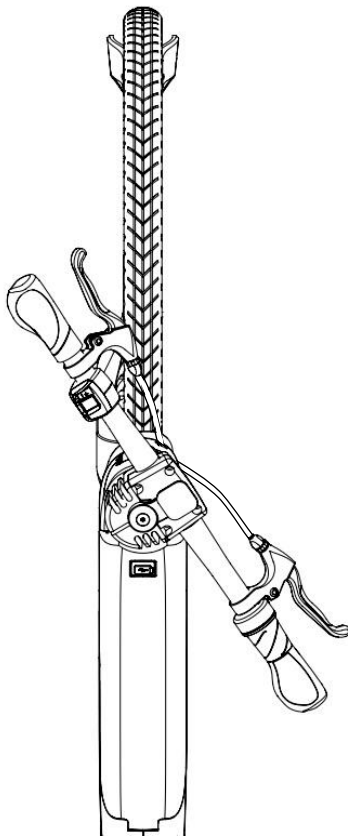
## Step 2

Fully extend the kickstand for ease of assembly.





Your Reevo is packaged with the handlebar parallel to the wheels and frame.

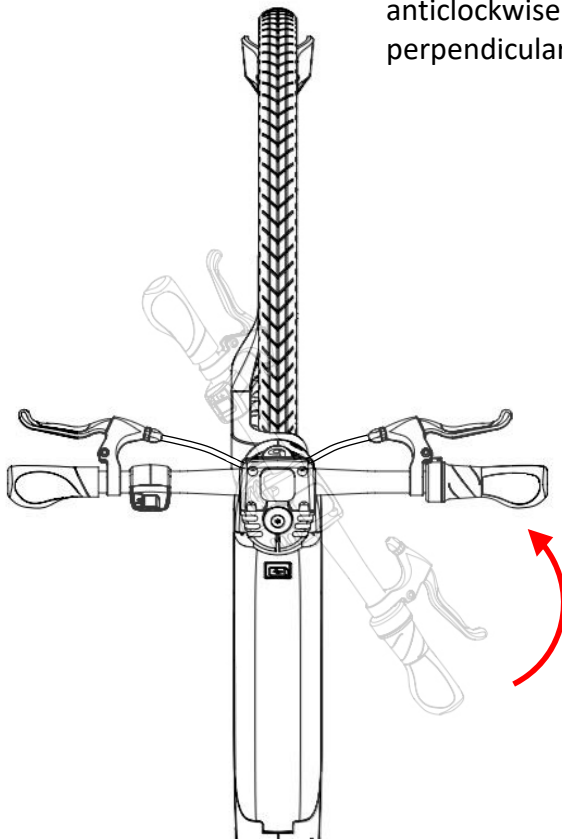


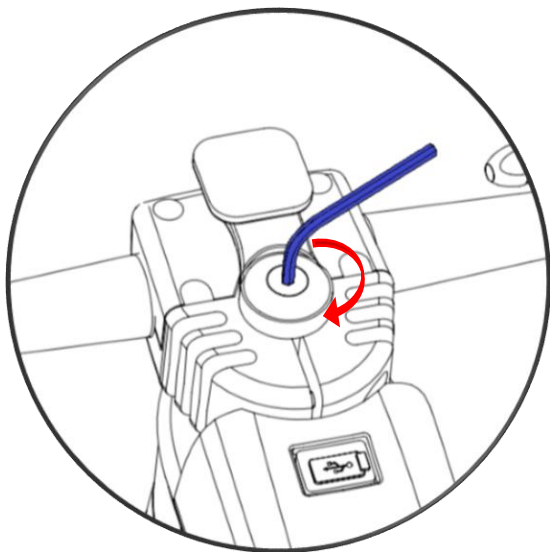
## Step 3

Stand in front of the bike and face the bike. Align the front wheel so that it is parallel to the frame.

## Step 4

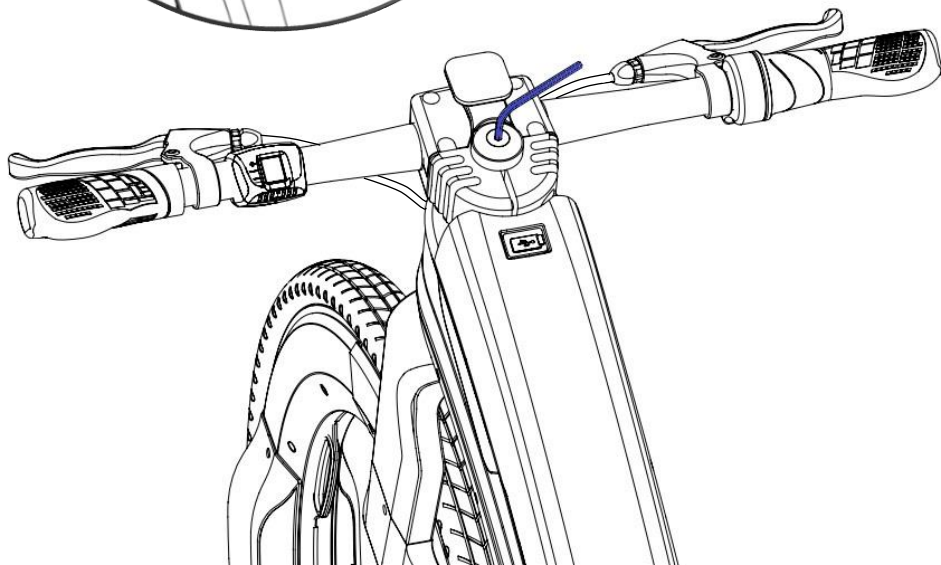
Hold the front wheel firmly in between your knees and rotate the handlebar anticlockwise until it is perpendicular to the frame.

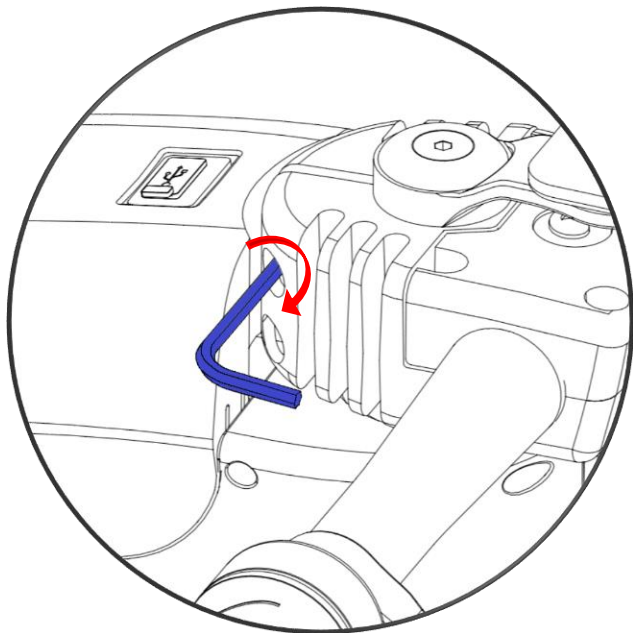




## Step 5

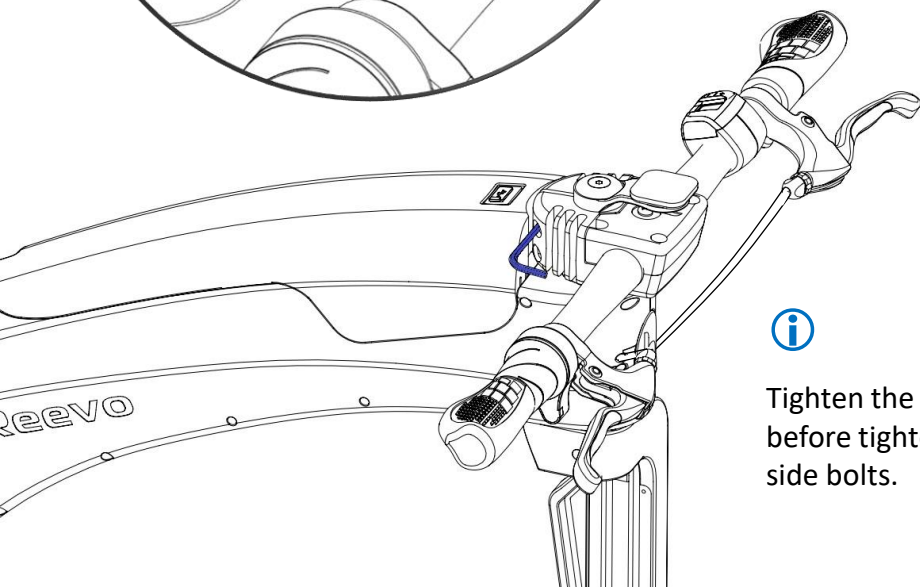
Use the 6mm Allen key to tighten the top bolt of the bike stem.





## Step 6

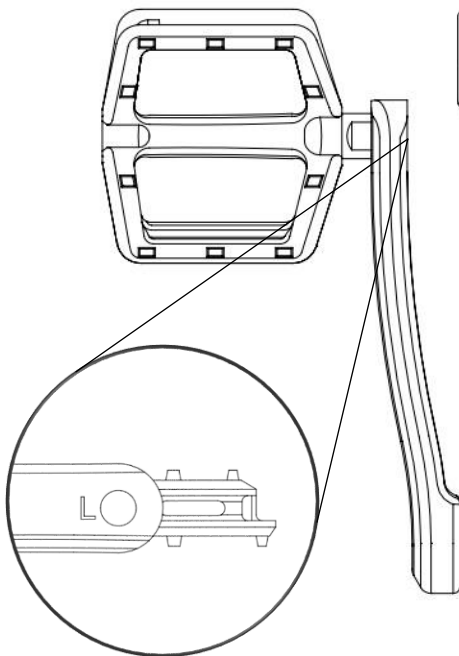
Use the 4mm Allen key to tighten the two side bolts of the bike stem.



Tighten the top bolt first before tightening the side bolts.

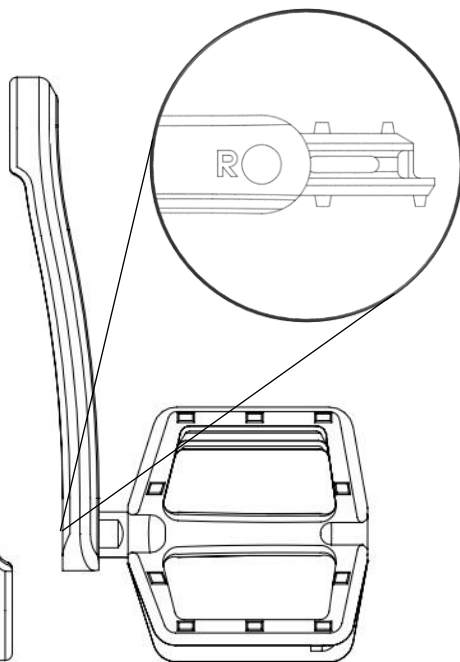


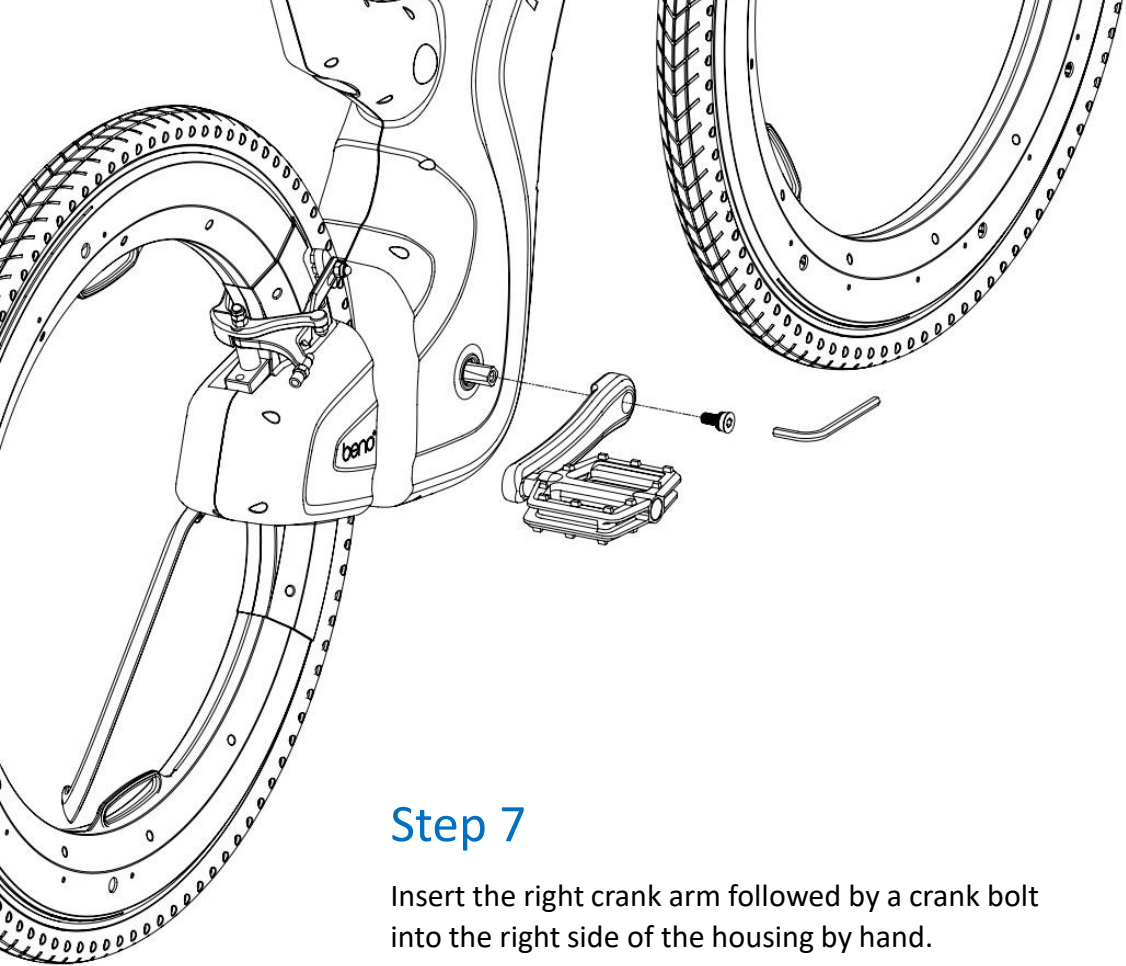
The left crank arm and right crank arm are different. You can differentiate them by identifying the “L” and “R” markings.



“L” is for the left crank arm.

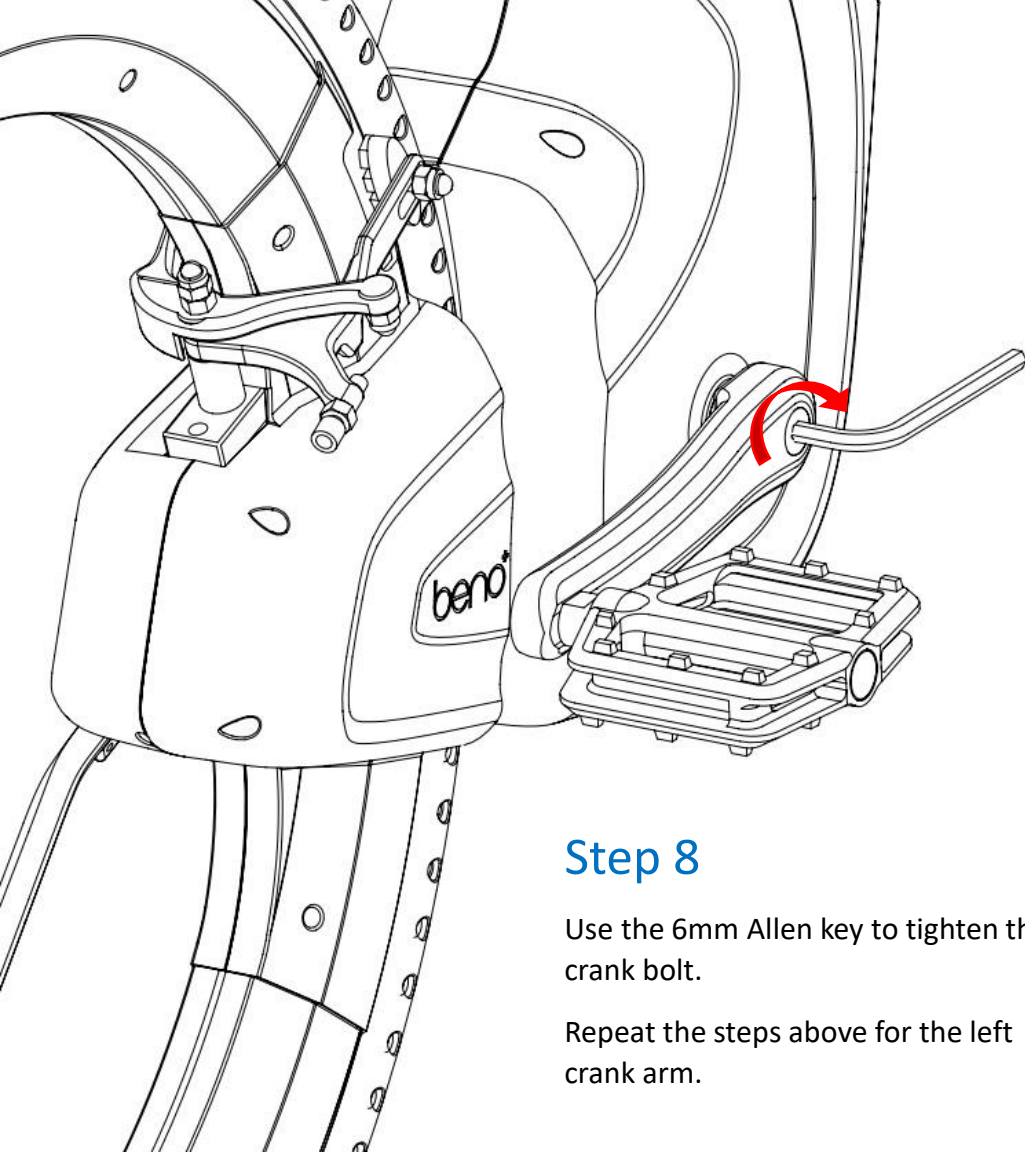
“R” is for the right crank arm.





## Step 7

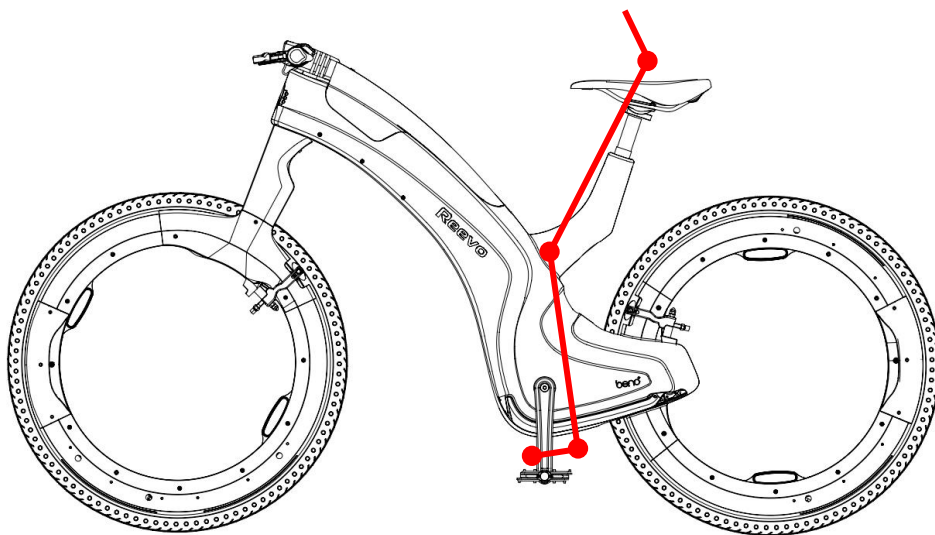
Insert the right crank arm followed by a crank bolt into the right side of the housing by hand.



## Step 8

Use the 6mm Allen key to tighten the crank bolt.

Repeat the steps above for the left crank arm.



## Step 9

Adjust the saddle height to fit your comfort.

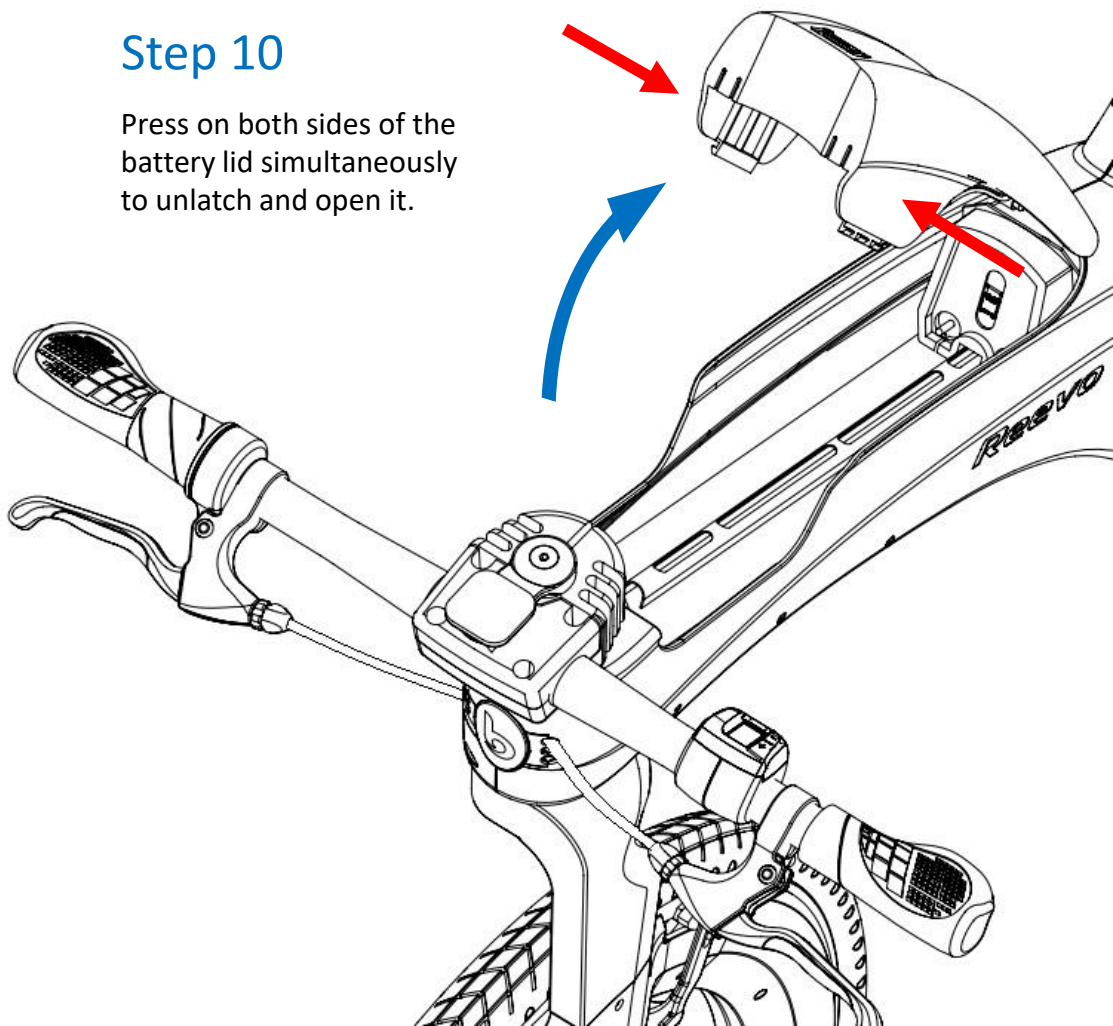


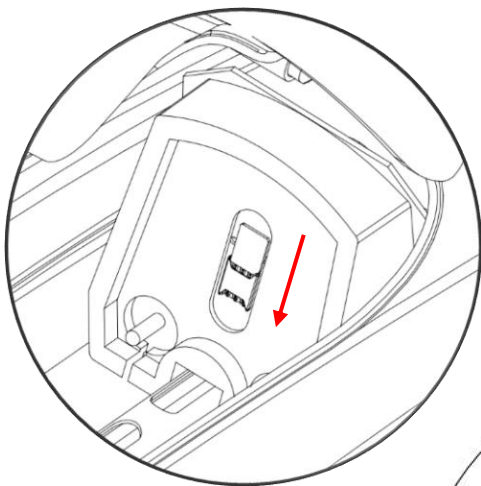
The optimum saddle height is when there is a slight bend in your leg with the pedal in its lowest position.



## Step 10

Press on both sides of the battery lid simultaneously to unlatch and open it.



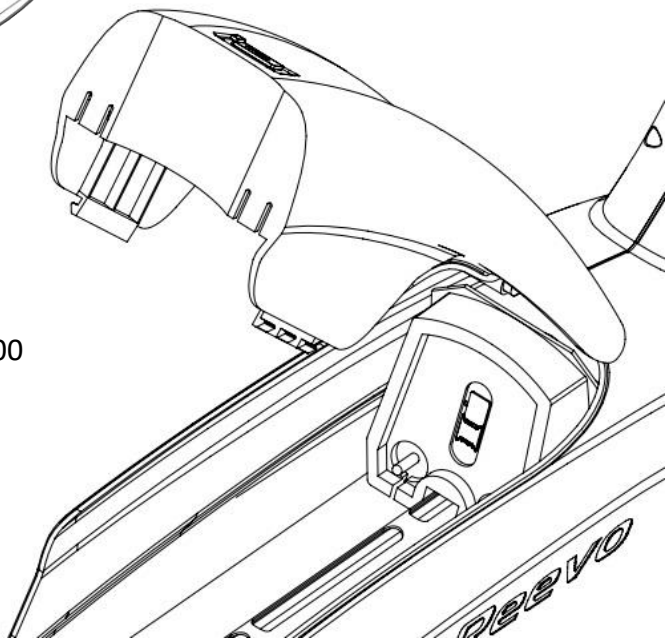


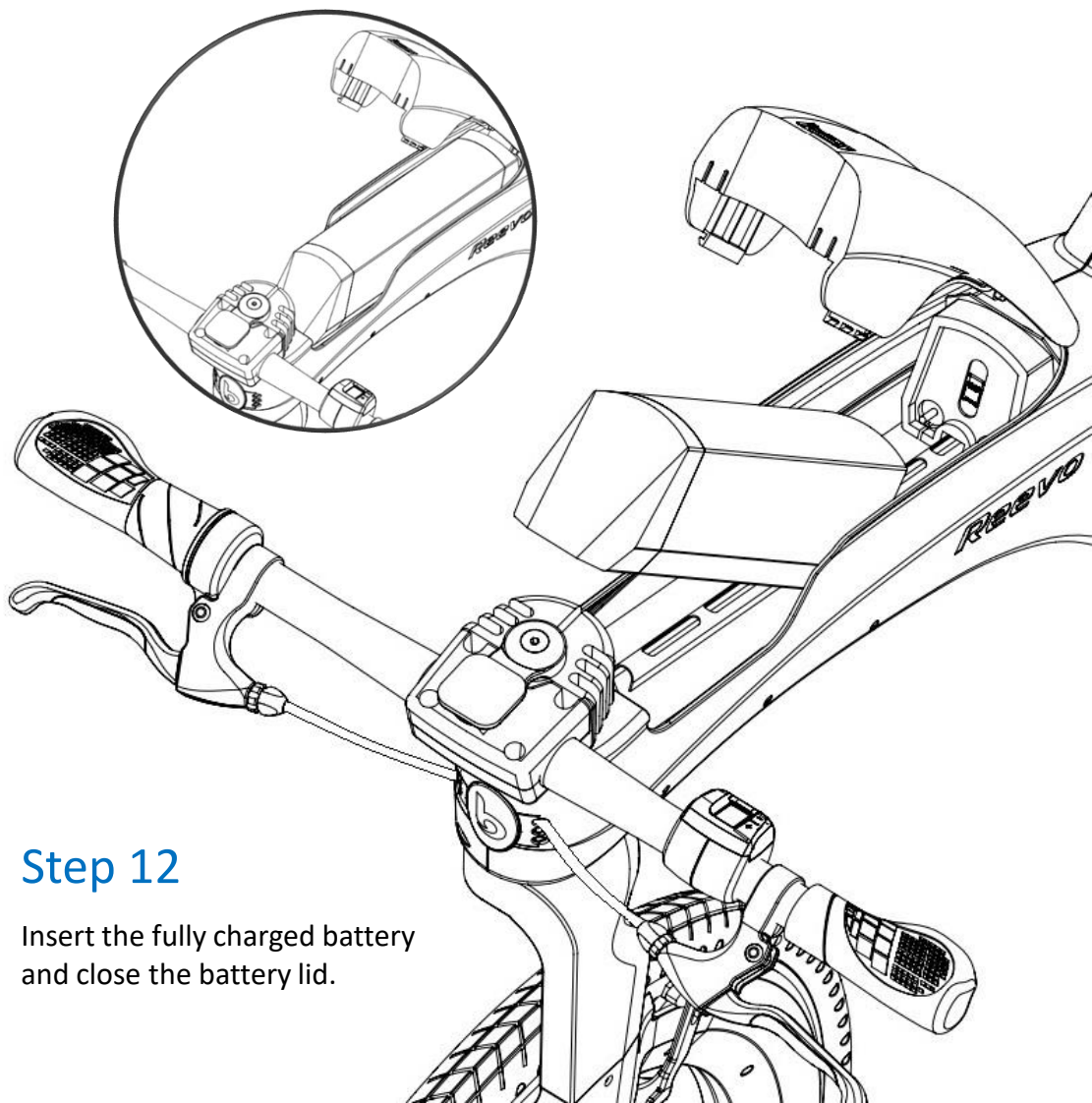
## Step 11

Insert a nano SIM card into the SIM slot on the battery dock.



We recommend using a 4G SIM card with a minimum data of 100 MB.





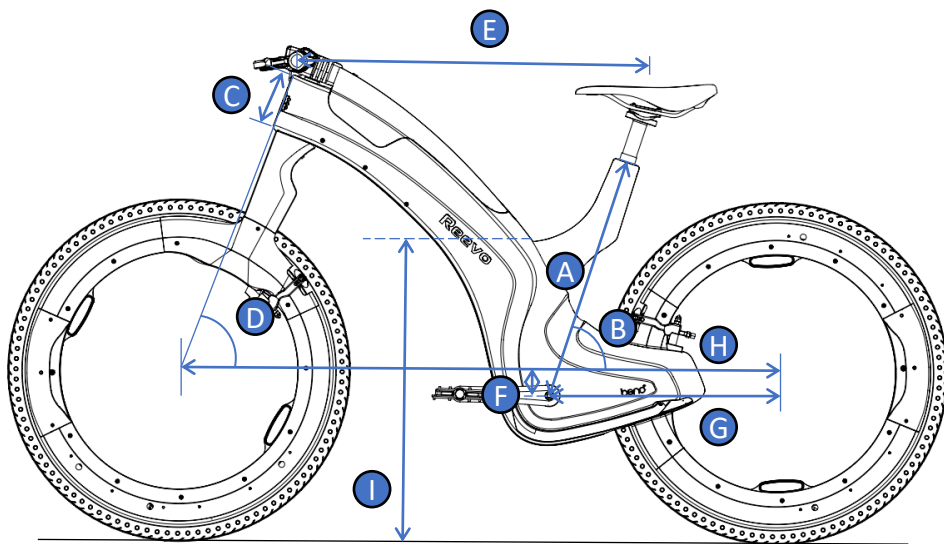
## Step 12

Insert the fully charged battery and close the battery lid.

# Technical Specifications

<b>Bike Weight</b>	22.3 kg / 55 lbs
<b>Wheel Size</b>	27.5(650b)
<b>Motor Power</b>	250W (EU) / 750W (US)
<b>Top Speed</b>	25km/h (EU) / 20mph (US)
<b>Available Size</b>	S/M (5'2" – 5'9") & M/L (5'9" – 6'3")
<b>Battery Type</b>	Lithium – Ion
<b>Battery Capacity</b>	48V, 10.5 Ah
<b>Charge Time</b>	3 hours
<b>Range</b>	60 km/ 37 miles

# Geometry



<b>Wheel Size</b>	27.5 (650b)
<b>A – Seat Tube</b>	48.2 cm / 19.0"
<b>B – Seat Tube Angle</b>	71.9°
<b>C – Head Tube Length</b>	10.1 cm / 4.0"
<b>D – Head Angle</b>	69.6°
<b>E – Effective Top Tube</b>	65.0 cm / 25.6"
<b>F – Bottom Bracket Drop</b>	4.4 cm / 1.7"
<b>G – Chainstay Length</b>	43.3 cm / 17"
<b>H – Wheelbase</b>	113.37 cm / 44.6"
<b>I – Standover</b>	59.1 cm / 23.3"
<b>Stem Length</b>	35 (S/M), 50 (M/L), 65(XL)*



# Bike Maintenance and Safety



Do not tamper or attempt to modify the bike's motor or integrated computer systems. Modifying them in anyway will void your warranty and may lead to accidents resulting in injury or even death.



Bicycle safety is important. Wear a helmet when riding the bike especially in heavy traffic. Failure to do so may result in serious injuries or even death.



Do not use cell phones while riding your bike.



Always make sure the lights are working properly and not obscured in any way especially in dark conditions.



Regular inspection and maintenance of the bike is important. Routinely check the brakes, tires, battery, wheel rims, handlebar and seat post. Poor maintenance of the bike can cause parts to break, fail or malfunction, leading to serious injuries or even death.



It is your responsibility to acquaint yourself with the laws of the country where you ride and to comply with all the applicable laws, including properly equipping yourself and your bike as the law requires.

# Battery Care



Battery is heavy. Handle it with care. Do not drop it to prevent injuries to yourself or damage the battery.



Remove the battery from the bike if you do not intend to use it for a long time.



Avoid leaving the battery discharged for prolonged periods.



Charge the battery indoors only and ensure the battery and charger are placed on a non – flammable surface when charging.



Keep the battery and charger away from moisture and water during charging.



Only use the Reevo battery charger to charge the battery.



The battery will have a shorter battery life during winter and that is normal.



Do not expose the battery and charger to blazing sunlight during charging.



Always charge the battery in ambient temperatures.



Always keep the battery connector clean and dry.



Keep the battery and charger away from fire and heat.



Keep the battery and charger away from fire and heat.



Keep the battery and charger out of reach of children.

# Warranty

❗ Beno ensures your Reevo against defects in workmanship and material for 2 years for Europe and 1 year for the rest of the world .

❗ All original components of the bike are covered by a warranty for a period of 2 years for Europe and 1 year for the rest of the world from the date of delivery.


❗ This warranty applies only to original owners and is not transferable.


❗ Claims under this warranty can be made to the place at which you purchased your Reevo or directly to Beno and proof of purchase is required.

❗ The warranty does not cover:

- Improper or negligent use, operation or modification of the product and its components.
- Normal wear and tear of drive train, brake pads, wheels, rollers, normal battery deterioration, etc.
- Damages or defects due to accidents.
- Improper assembly or installation of the product by the user.
- Follow – up maintenance.

# Disclaimer

 Under no circumstances, including, but not limited to negligence, shall Beno or any Beno distributor (seller) be liable for any damages, including but not limited to special or consequential damages that result from the use of, or the inability to use, the Reevo bike and/or any other products or materials referred to in this manual, even if Beno has been advised of the possibility of such damages.

 Applicable law may not allow the limitation or exclusion of liability or incidental or consequential damages, so the above limitation or exclusion may not apply to you.

#### FCC Statement

This device complies with part 15 of the FCC rules.

Operation is subject to the following two conditions: (1) this device may not cause harmful interference, and (2) this device must accept any interference received, including interference that may cause undesired operation.

Changes or modifications not expressly approved by the party responsible for compliance could void the user's authority to operate the equipment.

NOTE: This equipment has been tested and found to comply with the limits for a Class B digital device, pursuant to part 15 of the FCC Rules. These limits are designed to provide reasonable protection against harmful interference in a residential installation. This equipment generates uses and can radiate radio frequency energy and, if not installed and used in accordance with the instructions, may cause harmful interference to radio communications. However, there is no guarantee that interference will not occur in a particular installation. If this equipment does cause harmful interference to radio or television reception, which can be determined by turning the equipment off and on, the user is encouraged to try to correct the interference by one or more of the following measures:

- Reorient or relocate the receiving antenna.
- Increase the separation between the equipment and receiver.
- Connect the equipment into an outlet on a circuit different from that to which the receiver is connected.
- Consult the dealer or an experienced radio/TV technician for help.

The device has been evaluated to meet general RF exposure requirement. The device can be used in portable exposure condition without restriction.



beno<sup>+</sup>