

尺寸:240*210mm
材质:铜版纸

Instructions

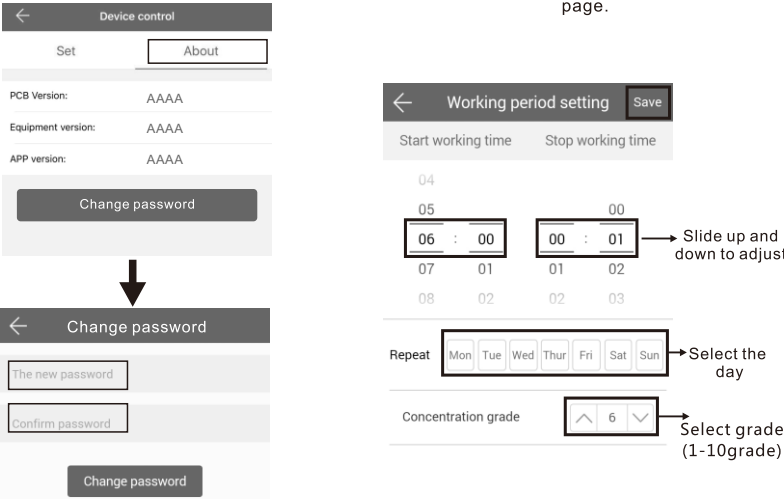
Where to get the app:
Please search "scent marketing" in Google play or App store and you will find it.



- Note:**
- 1. Please make sure that the Bluetooth function is turned on;
 - 2. Please make sure that the location function of the mobile phone is turned on.

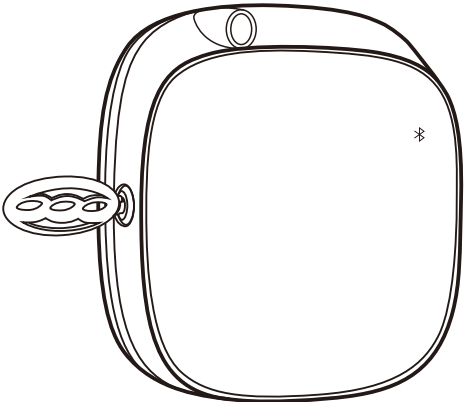


Amend password

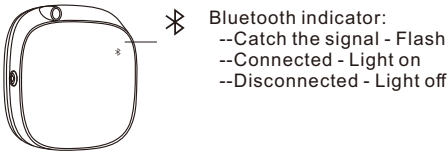


PRODUCT MANUAL

SCENT MARKETING V3.1



Reminding



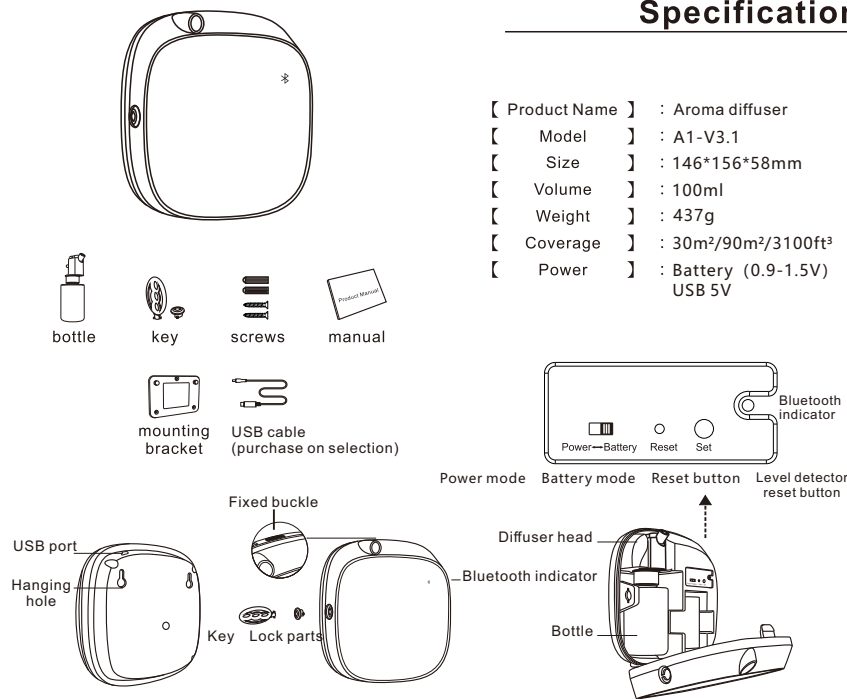
Concentration and Consumption

Grade	G1	G2	G3	G4	G5
Intervals (min)	15	13.5	12	10.5	9

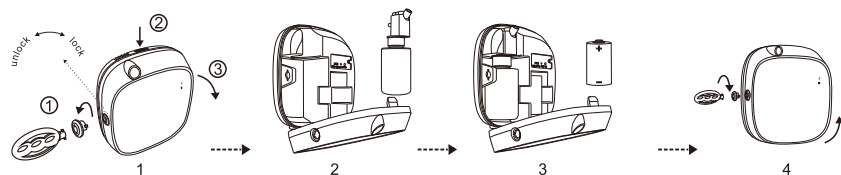
Grade	G6	G7	G8	G9	G10
Intervals (min)	7.5	6	4.5	3	1.5

- Notes:**
- 1. 100ml oils can diffuse 6300~6700 times under normal circumstances.
 - 2. All of the above grade atomization work time is 3 seconds.
 - 3. Different grade and oil may with different consumption.

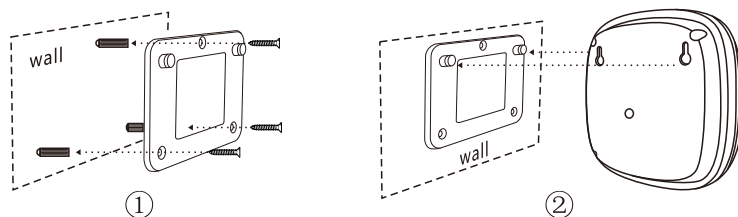
Specification



Installation



1. Insert the key and the mating part, twirl to "unlock" and then pull them out. Press the fixed button on the top and push forward.
2. Tightly connect the atomizer head and the fragrance bottle, and install them to the machine.
3. Choose "Power mode" or "Battery mode", plug in or insert the battery. (Please wait about 12 minutes to let machine charged on the first time connect with power.)
4. Insert the key to the mating parts, then insert them to the keyhole, twirl to "lock" for locking.



3M tape

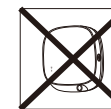
Warning: Please use 3M tape **AND** the nails to fix the mounting bracket.

Warning

1. Please keep the machine vertical. Tilt or lie flatly may cause oil overflow. The machine efficiency may be affected.



2. Shall not modify, disassemble or repair the machine. If any failure happens to the machine, please contact our technical personnel.



3. Do NOT use quick charger for device.

4. When the machine is first used or hasn't been used for more than 7 days, the controlling board is out of power. Please insert the batteries/plug in and wait for 1-2 minutes, the machine will be back on automatically.

Equipment cleaning

The machine needs to be cleaned when below situations happen:

1. You're about to change to another kind of essential oil.
2. The atomization volume becomes weak.

Cleaning steps:

1. Pull out the atomized head, loose the bottle.
2. Find a larger container and fill the industrial alcohol up, then soak the atomized head and the bottle for 5-10mins.
3. Airing the atomized head and the bottle.

Note:

After cleaning the device, turn on the unit, press and hold SET button for 3 seconds to reset remaining oil level.

Troubleshooting

Before asking to have the machine repaired, please try to diagnose the problem first following to bellow instructions.

Breakdown	Solution
Does not diffuse	-Check whether the mode you choose is correct or not. -Check if the machine is during "Non-Working period" -Air pump may be damaged, change a new one. -Check whether the tube is loose or not
Low diffuse	-The atomizing core is blocked, clean by alcohol or change a new component. -Check whether the gasket is damage/loose or not. -Check whether the tube is loose or not
Oil spill	-Check whether the bottle is loose or not -The gasket in the atomized head is damaged or loose.
Oil sprinkle	-The atomized head is damaged, change a new one -The machine is tilted or lie down, keep the machine vertical.
Abnormal noise	-The air pump is loose, retighten the pump -The air pump is damaged, change a new one.

FCC Warning

This device complies with Part 15 of the FCC Rules. Operation is subject to the following two conditions:

(1) This device may not cause harmful interference, and (2) this device must accept any interference received, including interference that may cause undesired operation.

NOTE 1: This equipment has been tested and found to comply with the limits for a Class B digital device, pursuant to part 15 of the FCC Rules. These limits are designed to provide reasonable protection against harmful interference in a residential installation. This equipment generates, uses and can radiate radio frequency energy and, if not installed and used in accordance with the instructions, may cause harmful interference to radio communications. However, there is no guarantee that interference will not occur in a particular installation. If this equipment does cause harmful interference to radio or television reception, which can be determined by turning the equipment off and on, the user is encouraged to try to correct the interference by one or more of the following measures:

- Reorient or relocate the receiving antenna.
- Increase the separation between the equipment and receiver.
- Connect the equipment into an outlet on a circuit different from that to which the receiver is connected.
- Consult the dealer or an experienced radio/TV technician for help.

NOTE 2: Any changes or modifications to this unit not expressly approved by the party responsible for compliance could void the user's authority to operate the equipment.

The device has been evaluated to meet general RF exposure requirement.

CE Caution

Use the product in the environment with the temperature between -10°C and 50°C; Otherwise, it may damage your phone. It can be operated under 2000m. For the following equipment:

Product Name: Aroma diffuser

Model: A1

Guangzhou Chiyang Scent Technology Co., LTD. hereby declares that this [Name: Aroma diffuser, Model: A1] is in compliance with the essential requirements and other relevant provisions of Directive 2014/53/EU.



This product can be used across EU member states.

CAUTION: RISK OF EXPLOSION IF BATTERY IS REPLACED BY AN INCORRECT TYPE.
DISPOSE OF USED BATTERIES ACCORDING TO THE INSTRUCTIONS.

Do not use other unauthorized chargers power supply for charging.

Do not use the product in environment below -10°C or above 50°C for charging.

Bluetooth	
Support Standard:	802.15.1
Frequency Range:	2402-2480MHz
Max. RF Output Power:	3.04dBm (EIRP)
Type of Modulation:	GFSK
Data Rate:	1Mbps
Quantity of Channels	40