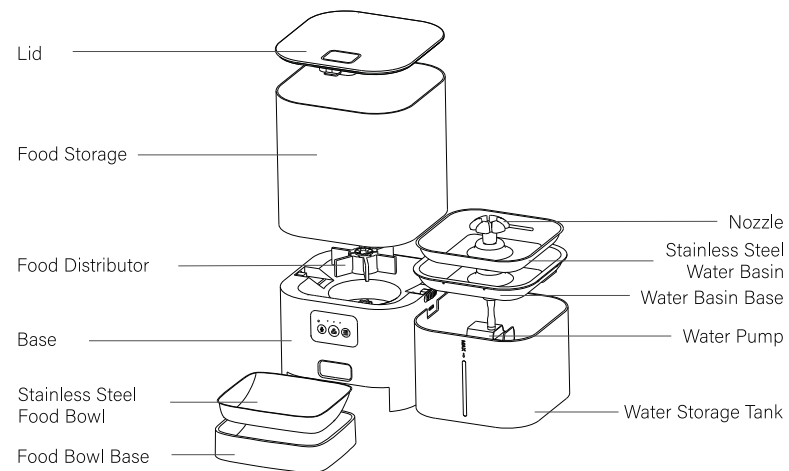


# 2 In 1 Pet Smart Feeder User Manual

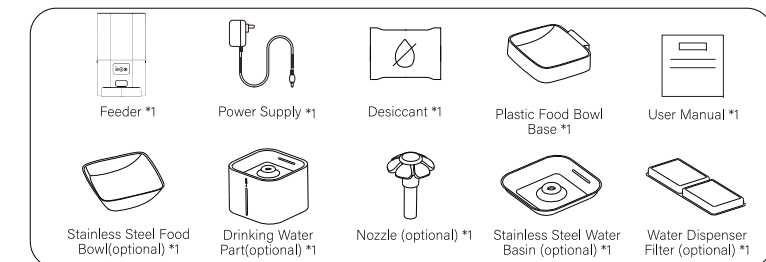


## Structure Description

### ► Product Sturcture



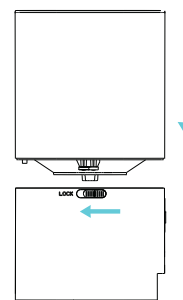
### ► Operating Instructions



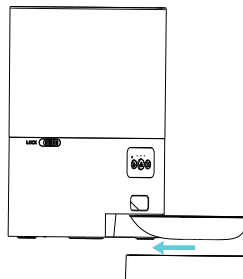
## Instructions for Use

### ► Instructions for Use

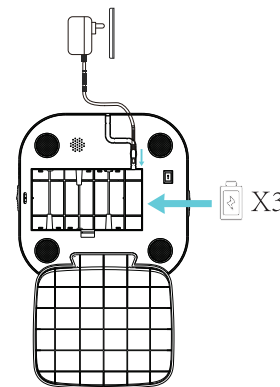
1. Assemble the grain storage barrel and tighten the bayonet on both sides.



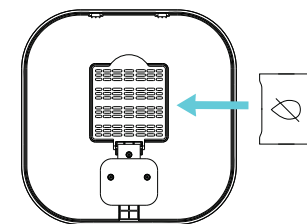
2. Prepare the food bowl injection molding and assemble it. At the same time, take out the stainless steel bowl and put it in the designated position. The effect diagram indicates with arrows.



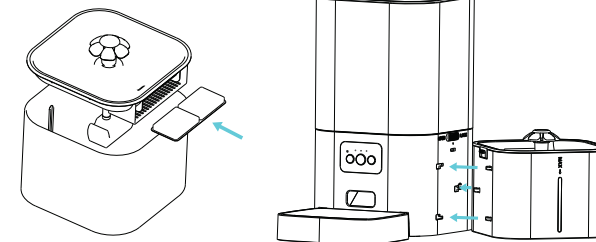
3. Plug the prepared power cord into the power plug. Prepare three D-type batteries and put them into the battery box (optional).



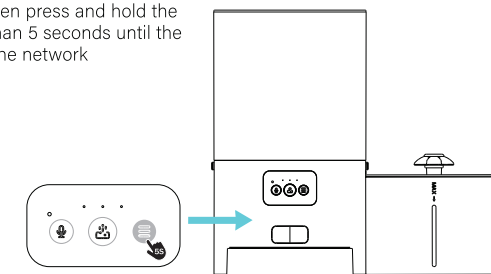
4. Add desiccant and cover with lid.



5. Tighten it from front to back and inject an appropriate amount of drinking water. (Optional)



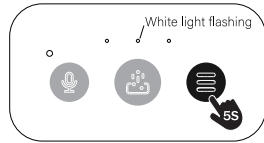
6. Pour in food and water, then press and hold the rightmost button for more than 5 seconds until the white light flashes to enter the network configuration mode.



7. Users can heat the water through the external heating rod on the back side of the water dispenser

## 三 Distribution Network Method

### ► Distribution Network Method

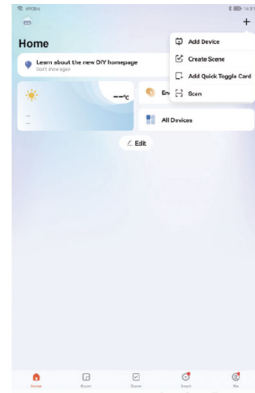


1. Long press the button 5 seconds and white light will flashes to enter the network configuration mode.

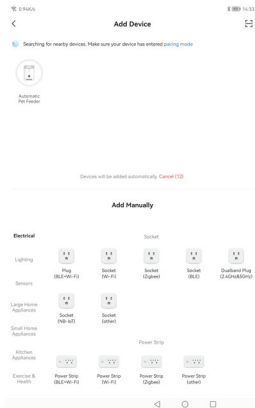


You can scan the above icon with your mobile phone

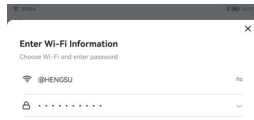
2. Connect APP



3. Enter the "tuya" APP, click the plus sign in the upper right corner, and select Add Device



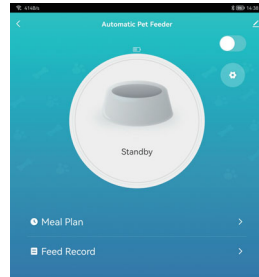
4. Select this product



5. Select to connect to 2.4G WiFi



7. Feeding time can be scheduled



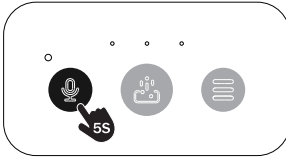
6. The number of servings can be selected on the APP control page

## 四 Button Function

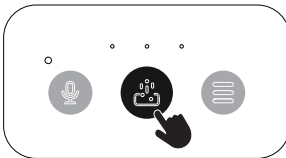
### ► Button Function

Our product has three buttons, and their corresponding functions are as follows from left to right:

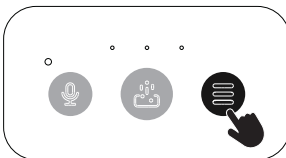
Button 1: Single click to play recording, long press for 5 seconds to start recording, release to end recording.



Button 2: Add food once in a single machine, double-click the child lock, double-click again to release the child lock.



Button 3: Standalone water dispenser switch, press and hold the distribution network to restore factory values.



### ► Corresponding Lighting Effects

Normally the white light is always on; Child lock yellow light is always on; The red light flashes when food is stuck; White light flashes slowly during network distribution; Unknown abnormal white light flashes quickly.

## 五 Matters Needing Attention

### ► Matters Needing Attention

1. Do not allow pets to consume all or part of this product. If you are concerned about the power cord, place the feeder in a corner to hide the power cord.
2. Do not place this product outdoors. The operating environment temperature is 0-50°.
3. Please use alkaline dry batteries (D type X3). Do not use old batteries. When the battery power is low, the feeder or waterer will not work properly.
4. Please check the battery regularly. Please replace the battery when traveling long distances or on business trips.
5. Please empty the storage bucket when carry and remove the dry batteries.
6. This product only supports dry food with a diameter of 2-10mm. If you put in too large items, the feeder may be blocked.
7. The desiccant is not edible. Please strictly replace the desiccant regularly.
8. Regularly replace the drinking water and filter element. If it is not replaced for a long time, it is easy to breed bacteria. (Replace the filter element every 30 days)
9. The red light flashes too frequently, indicating that the food may be too large. Please replace it with a smaller size of food;
10. The dry battery test environment is to open three No. 1 batteries and leave them alone for a long time after drinking water. The specific usage time varies slightly depending on the battery power.
11. When using, please be sure to read this manual carefully and use it correctly.

## 六 Parameter Information

### ► Parameter Information

|                          |                               |
|--------------------------|-------------------------------|
| Product Model            |                               |
| Material                 | ABS                           |
| Weight                   | 2.3KG                         |
| Size                     | 383*326*352 mm                |
| Power Supply             | DC 5V 2A / D-type BatteriesX3 |
| Power                    | 10W                           |
| Food Capacity            | 6L                            |
| Drinking Water Capacity  | 2.5L                          |
| Dry Battery Running Time | 14H                           |

FCC Warning:

This equipment has been tested and found to comply with the limits for a Class B digital device, pursuant to part 15 of the FCC Rules. These limits are designed to provide reasonable protection against harmful interference in a residential installation. This equipment generates, uses and can radiate radio frequency energy and, if not installed and used in accordance with the instructions, may cause harmful interference to radio communications. However, there is no guarantee that interference will not occur in a particular installation. If this equipment does cause harmful interference to radio or television reception, which can be determined by turning the equipment off and on, the user is encouraged to try to correct the interference by one or more of the following measures:

- Reorient or relocate the receiving antenna.
- Increase the separation between the equipment and receiver.
- Connect the equipment into an outlet on a circuit different from that to which the receiver is connected.
- Consult the dealer or an experienced radio/TV technician for help.

Caution: Any changes or modifications to this device not explicitly approved by manufacturer could void your authority to operate this equipment.

This device complies with part 15 of the FCC Rules. Operation is subject to the following two conditions:

(1) This device may not cause harmful interference, and (2) this device must accept any interference received, including interference that may cause undesired operation.

This equipment complies with FCC radiation exposure limits set forth for an uncontrolled environment. This equipment should be installed and operated with minimum distance 20cm between the radiator and your body.