

True wireless headphones
FE18

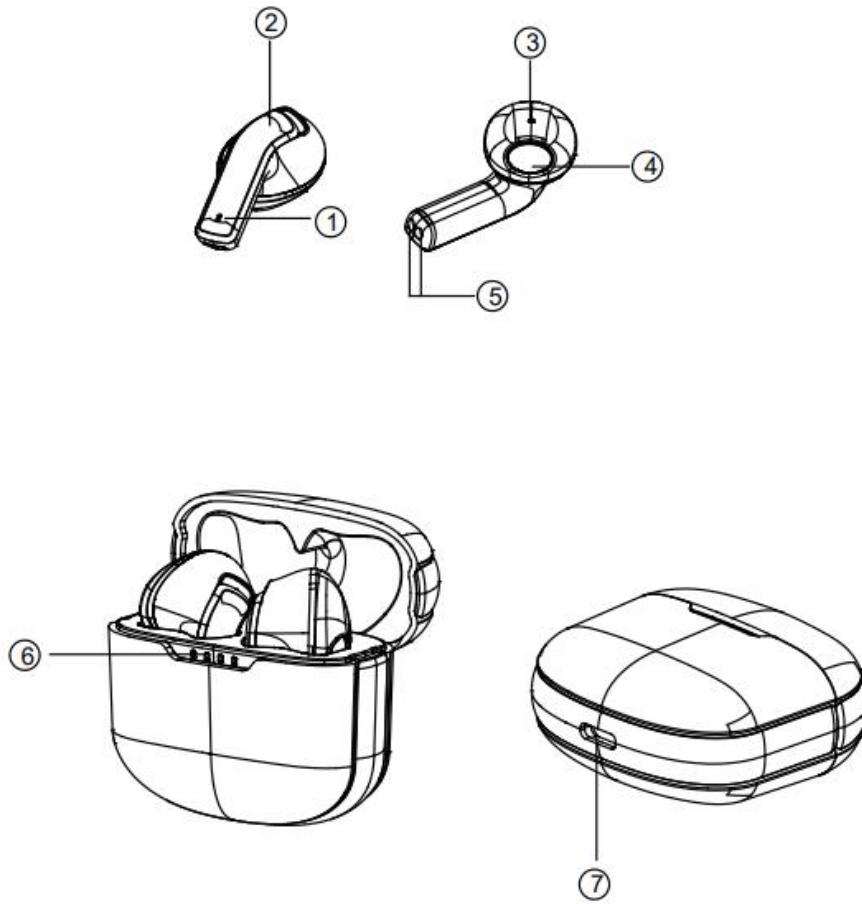
FE18

Product host and accessories

Headphone host /1 pair
Type-C Charging Cable X 1
user manual X 1

Product structure description

1. Microphone Radio hole&Headphone indicator
2. Touch area (FMB)
3. Tuning hole
4. Speaker hole
5. Headphone Charging Interface
6. Battery compartment power indicator
7. Type-C charging por



3P

Before operating this machine, please read this user guide carefully and keep it in a safe place for future reference.

Product specifications

- Version: Bluetooth 5.0
- Speaker specifications: $\Phi 13\text{MM}$ 16 Ω
- Frequency response range: 20Hz-20KHz
- Use distance: about 10 meters
- Music playback: about 5 hours
- Talk time: about 5 hours
- Stand by time: about 150 hours
- Charging time: about 1.5 hours
- Battery specifications: 35mAh*2/350mAh
- Sensitivity: 98dB
- Weight: 33g

※The above data is the value measured by the laboratory, and the actual use may be different according to the specific situation. Among them, music playback and talk time data are measured at 50% of the earphone volume.

Packing list:

Bluetooth headset/1 pair	Manual×1
Charging box×1	USB Type-C charging cable×1

4P

Operate instruction:**Power On**

Take out from charging box, it will automatically enter into pairing, and the white light will be on for 1 second to complete the boot.

Bluetooth pairing

Take out the headset from charging box, the white light flashes quickly / 2 times per second, it automatically enters the pairing mode. Use a Bluetooth-enabled device to search for the Bluetooth name "FE18" of the headset, and click to pair. If there is no link within 3 minutes, the headset will automatically turn off.

Turn off

Press "FMB" for around 5seconds or return to the charging box, flash 3 times slowly, Accompanied by the shutdown tone, complete shutdown.

Call Function

Short Press the multi-function and touch the "FMB" place once to answer it.

Hang up the call: In the call state, short press the multi-function and touch the "FMB" place once to hang up.

Reject a call: When a call comes in, short press the multi-function and touch the "FMB" 2 times to reject the call.

5P

Music function

After the headset is successfully connected to the phone, you can easily open the music player in the phone to play music.

In music mode:

- Pause/Play: Touch the earphone to pause the music playback, touch it again to continue playing the music.
- Previous song: Touch the "FMB" on the left twice to switch to the previous song.
- Next song: Touch "FMB" on the right side twice to switch to the next song.
- Increase the volume: touch the "FMB" on the right side 3 times.

- Decrease the volume: Tap the "FMB" on the left 3 times.

Intelligent voice assistant:

- Activate: Long press "FMB" for about 2 seconds to activate "Siri"/voice assistant.
- Exit: Voice exit "Siri"/voice assistant or mobile phone cancel.

Headphone charging:

- Low battery reminder: white light flashes quickly, 2 times/flash 3 times per second, once every 3 minutes, accompanied by voice prompts
- Using Type-c charging compartment: the white light flashes and goes out when fully charged; 4 white lights show the percentage of battery power in the compartment, and each light shows 25% power.

6P**Precautions for charging and battery:**

- This product has a built-in non-removable rechargeable battery.
- The charging current and voltage are 5V/500mA. Do not use a voltage exceeding 5V/500mA to charge the product, otherwise the battery will be damaged.

Safety Precautions:

- To ensure your personal safety, please do not wear or place the headset too close to the pacemaker (less than 10cm).
- Children should use this device under adult supervision. This product is not a toy.
- Using headphones at high volume, especially for a long time, may cause damage to your hearing.
- For traffic safety, do not use headphones while driving or riding a bicycle.

7P**Name and content of toxic and hazardous substances or elements in the product:**

This form is compiled in accordance with the provisions of SJ/T 11364-2014

Part Name	Hazardous substances or elements					
	Lead (Pb)	mercury (Hg)	cadmium (Cd)	Hexavalent chromiumCr (VI)	Polybrominated biphenyls (PBB)	Polybrominated Diphenyl Ether (PBDE)
metallic parts	×	○	○	○	○	○
Rubber parts	○	○	○	○	○	○
Wire	○	○	○	○	○	○
Circuit board assembly	×	○	○	○	○	○
Battery	×	○	○	○	○	○
<p>○: It means that the content of this toxic and hazardous substance in all homogeneous materials of this part is below the limit requirement of GB/T 26572.</p> <p>×: Indicates that the content of the toxic and hazardous substance in at least one of the homogeneous materials of the part exceeds the limit requirement of the GB/T 26572 standard.</p> <p>The part marked "X" in the table is restricted by the global technological development level and cannot be replaced by harmless substances.</p>						

FAQ:

1. What should I do if the left and right ears are unsuccessfully paired?

If the left and right ears cannot be paired, please turn off the Bluetooth function of the mobile phone first, put the headset back into the charging box, and then take out the headset according to the instructions in the manual, and re-pair. After the left and right earphones are successfully paired, turn on the Bluetooth of the mobile phone and manually click on the mobile phone to connect to the earphones.

2. What should I do if my phone is connected to two earphones at the same time?

A. Turn off the Bluetooth function of the mobile phone, and at the same time take out the two earphones from the charging box, re-pair them, turn on the Bluetooth of the mobile phone after the pairing is successful, and manually tap the mobile phone to connect the earphones.

B. The phone directly unpairs the two headsets, and then reconnects them according to the instructions on the manual.

3. Several problems that may occur when the playback is paused:

At present, after testing the normal use of the Apple mobile phone, manually disconnect the Bluetooth on the mobile phone, and then turn on the Bluetooth to fail to automatically return to the connection. You need to manually click the connection name to return to the connection, and it can be used normally.

4. The earphone has a noise problem:

A. Whether there is interference from large electronic equipment nearby.

B. Confirm whether there are impurities in the sound source itself, change the music and then test whether there will be noise.

C. When the earphone battery is low, there will be noise. Put the earphone into the charging

box for charging.

5. Headphone sound delay problem:

At present, the normal delay time of Bluetooth technology is not higher than 300ms.

6. There is no sound from the headset, touch is useless, and the indicator light flashes.

Approach:

Turn off the Bluetooth of the mobile phone, put the headset into the charging box, and take it out again. After the reset is successful, put it in the charging box, take it out and re-pair.

7. Other possible problems:

A. The auxiliary ear is stuck, there may be electromagnetic interference nearby.

B. The headset does not charge:

① Confirm whether the charging box has electricity;

② Whether the thimble of the charging box is in good contact with the earphone during charging and electric shock.

C. The headset does not turn on: Confirm whether the headset is powered, and whether the white light of the headset is on in the charging box.

D. The voice of the other party cannot be heard in the headset call state:

① Confirm whether the headset is connected to the mobile phone;

② Whether to switch the Bluetooth call status to the mobile phone call status.

8. The single earphone is not charged when placed in the charging box:

A. At the same time, take out the L/R earphones and put them in the charging box;

B. Insert the power cord of the charging box to charge

8P

Product certification:

Date of inspection:

Inspectors:

Inspection conclusion: ☒ qualified ☐ unqualified

(Picture:)

FCC Statement

This device complies with part 15 of the FCC Rules. Operation is subject to the following

two conditions:

(1) This device may not cause harmful interference, and

(2) this device must accept any interference received, including interference that may cause undesired operation.

This equipment has been tested and found to comply with the limits for a Class B digital device, pursuant to part 15 of the FCC Rules.

These limits are designed to provide reasonable protection against harmful interference in a residential installation.

This equipment generates, uses and can radiate radio frequency energy and, if not installed and used in accordance with the instructions, may cause harmful interference to radio communications. However, there is no guarantee that interference will not occur in a particular installation.

If this equipment does cause harmful interference to radio or television reception, which can be determined by turning the equipment off and on, the user is encouraged to try to correct the interference by one or more of the following measures: Reorient or relocate the receiving antenna.

- .Increase the separation between the equipment and receiver.

- .Connect the equipment into an outlet on a circuit different from that to which the receiver is connected.

- .Consult the dealer or an experienced radio/TV technician for help.

Cautions to this device not explicitly approved by manufacturer could Caution:

- .Any changes or modifications void your authority to operate this equipment.RF

Exposure Information

- .The device has been evaluated to meet general RF exposure requirement.

- .The device can be used in portable exposure condition without restriction.