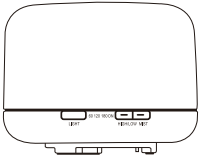


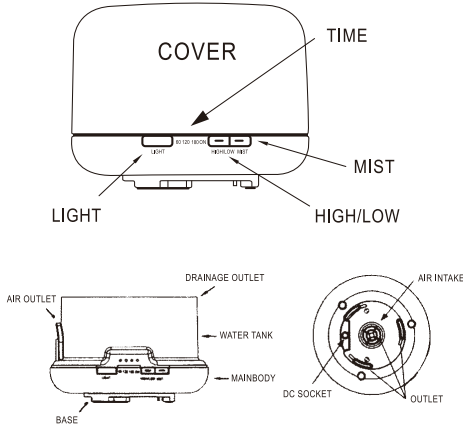
# Aroma Diffuser

## User Manual



Aroma Diffuser

This Aroma Diffuser uses Ultrasonic waves to instantly vaporize water and essential oil in the tank, to produce a cool, dry fragrant mist.



Aroma Diffuser

### MAINTENANCE

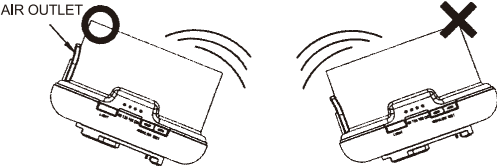
After using 5-6 times, or 2-3 days, please clean the product as follows

- Unplug the unit from mains supply and remove cover
- Pour out any remaining water from the "DRAIN SIDE" of the tank,
- Unplug power cord from base of unit
- Put 1 tablespoon of citric acid in the water tank, add just under 100ml of warm water (up to 70°C)
- Leave for 5 minutes, and then drain solution from the "DRAIN SIDE" of the tank.
- Wipe with a soft cloth. Avoid Ultrasonic Vibration plate area, which can be gently cleaned with a cotton bud

Never use other acids, enzymes or detergents, as this may risk poisonous gas to be created or cause malfunction.

Cover has an inner cover that can also be removed for cleaning.

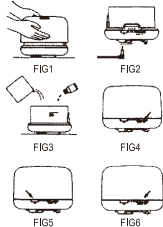
- 1 Pull grip as indicated in the diagram to release
- 2 After cleaning inner cover, replace by holding grip, and pressing down inner and outer cover until "click" is heard



Aroma Diffuser

### OPERATION

1. Please put the product upside, and remove the upper cover. **Fig 1**
2. Please connect the AC adaptor to the base of DC jack of the main body via cable guide. **Fig 2**
3. Please use the measure cup to supply water from the water pipe, Please take care, do not pour water out of the cup and fill water into the water tank with measuring cup. **Fig 3**
  - Pay attention to the filled water level: do not exceed the max line on the water tank.
  - Water with high temperature and the mist may fly out, please never fill in water during operating.
4. Drop essential oil into water tank vertically. The dosage is about 2-3 drops (about 0.1-0.15ML) per 100ML water. **Fig 3**
5. Install the cover of the main body with the original channel.  
**BTW:** You must cover the upper cover when you want to use the product.
6. Please connect the AC adaptor with family user power supply socket.
7. If you press the **MIST** switch on main body of the product, mist function in on. You can set up the timer, each time you press down this button; the timer will be changed between 60 minutes, 120 minutes, 180 minutes, ON and OFF **Fig 4**
  - When the power supply is connected, the original state is OFF
  - If there is few water in the water tank, the power supply will turn off immediately even with power connected.
  - If the timing mode is off, LED light will be off at the same Time.
8. Press "**HIGH/LOW**" to adjust the spray intensity. (Strong or Weak) **Fig5**.
9. If you press the **LIGHT** on, you can choose ON/OFF state of the LED light. If you press this button for each time, the light color and lightness will be changed. **Fig 6**
10. If you do not use it for a long time, please drain out the water from tank water, dry and then keep it well. If you want to use it again, please use the neutral detergent to clean the water tank again, then you can use it.



Aroma Diffuser

### ATTENTION

The amount and intensity of mist produced will vary, but this is not unusual and should not be considered as a fault.

Factors that affect this include water type, humidity, temperature, air currents. If there is no water in the Tank, pressing the **MIST** will cause the unit to "beep" 3 times to remind you to add water. The unit will not work without water.

Only 100% natural essential oil can be used in this product. Those containing chemical fragrance, spice or impurities will cause malfunction. Use 3-5 drops per 100ML water a time. Too much oil will clog the system and cause malfunction. Please clean the unit as per the maintenance instructions, before changing to use a new type of essential oil.

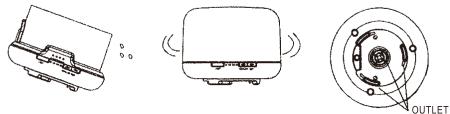
### ACCIDENTAL LEAKAGE

In the event of the unit being knocked over or tipped during use, please follow the steps as below to avoid malfunction.

Unplug the unit and remove cover.

Pour out any remaining water out of the water tank from,

Shake the unit gently to drain any water inside the mechanism, and then allow drying for at least 24 hours.



Aroma Diffuser

### TROUBLESHOOTING

Please refer to the table below in the event of the product operating abnormally

Symptom	Possible Cause	Solution
Will not switch on-switch off early	<ul style="list-style-type: none"><li>● Is there enough water in the tank?</li><li>● Is the power cord connected properly?</li></ul>	<ul style="list-style-type: none"><li>● Add water to the tank</li><li>● Disconnect, check cables and re-connect carefully.</li></ul>
No mist or abnormal mist	<ul style="list-style-type: none"><li>● Not enough water?</li><li>● Too much water?</li><li>● Dirt on the Ultrasonic plate?</li><li>● Cover and inner cover are not installed properly?</li><li>● Dirt on the air suction port on the underside of the base?</li></ul>	<ul style="list-style-type: none"><li>● Add suitable amount of water in the tank.</li><li>● Water must never be filled over 500ML (MAX) line.</li><li>● Please refer to Maintenance instructions</li><li>● Remove and re-install correctly, so vapors can be released freely.</li><li>● Clean the air suction port of any dust.</li><li>● Restricted airflow will affect mist.</li></ul>
Water leakage from product	<ul style="list-style-type: none"><li>● Cover and inner cover are not installed properly?</li><li>● Has the unit been tipped over?</li><li>● Low temperature or high humidity?</li></ul>	<ul style="list-style-type: none"><li>● Remove and reinstall correctly, so vapors can be released freely.</li><li>● Follow accidental leakage instructions.</li><li>● Under these conditions, the mist may condense quickly into water droplets.</li></ul>

### SPECIFICATIONS

Dimensions	Approx 168 x 121MM
Weight (excluding adaptor)	Approx 520g
Power: Input / Output	AC100-240V 50,60HZ / DC 24V 650MA
Length of cord	Approx 170CM
Electric consumption	Approx 13W
Time Mode	60/120/180/ON minutes
Tank Capacity	500ML
LED light	9 Bulbs
Materials	Upper parts PP, lower base ABS
Accessories	AC Adapter and measuring jug
Method of mist production	Ultrasonic vibration at approx 2.4MH

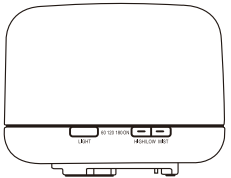
Aroma Diffuser

### Ultrasonic Aroma Diffuser Warranty Certificate

Warranty time (One Year after the Date of Buying)			Date	Month	Year
Name	Address	Tel			
Stamp of the shop	Repairing Memo				
<ul style="list-style-type: none"><li>● Here by us declare that the product has been checked and qualified.</li><li>● According to this manual, if there is natural fault occurred during normal operation, the product will be guaranteed for one year free.</li><li>● Although the product will be repaired free according to rules in this book, we do not intend to limit the legal right of the customer.</li><li>● As for repairing after warranty period, please contact with the shop you bought from.</li><li>● If you moved to other place for living or got the product as a present then you should contact with the customer service center since the shop no longer take the responsibility any more.</li><li>● The personal information (name and address etc.) written in the warranty certificate should be confirm correct and valid. That should be used for the corresponding warranty solution. Please understand that.</li></ul>			If the product was broken down during warranty period, please bring this book with warranty certificate page, product main body and accessories all together to the shop where you bought from for free repair. But if there is following cases, we cannot free repair it even in the warranty period.		
			1. The trouble occurred one year later after the date of buying.		
			2. There is no presentation of the book, any shop stamp or receipt to indicate the buying date either.		
			3. There are signs that the date, words or numbers were changed on purpose.		
			4. There are fault caused by fire, earthquake, storm and flood, damage, salt erosion, Public disaster, war or other disasters.		
			5. There are fault caused by falling down, using in water, misusing or using in abuse		
			6. Hurt, contaminated or fault occurred on appearance.		

Aroma Diffuser

# 超聲波香薰機 說明書



Arroma Diffuser 香薰機

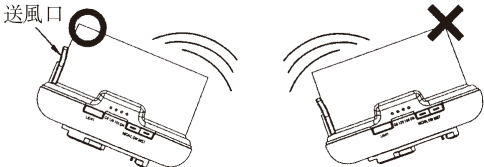
## 保養

每使用 5-6 次或 3-5 日，請按以下方法清潔產品：

1. 關掉電源，拔掉電源線以及打開上蓋。
2. 把水箱剩下的水從排水側完全倒出。
3. 先將少量廚房用的洗滌劑放入溫水中稀釋，再用抹布擦拭本產品。
4. 如果您發現送風口內側有污垢，請將容器蓋取下再清理幹淨。（如右圖）
5. 保養時，請勿使用醫用稀釋濟苯乙醇，否則有可能損壞本產品或抹掉產品上的各種標識。

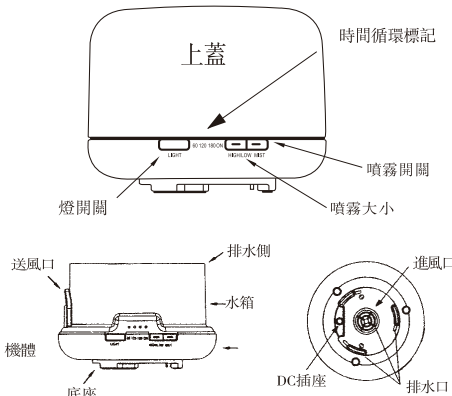


注意：請務必使用中性能清潔。



Arroma Diffuser 香薰機

此香薰噴霧機利用超聲波霧化水和精油，釋放出清爽香氣



Arroma Diffuser 香薰機

## 注意事項

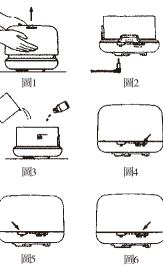
確保以下事項，避免損壞產品：

- 非技術人員不得私自改造、拆卸或維修本產品，如需維修，請與本產品銷售處聯繫。
- 請勿故意刺傷、扭曲、拉伸電源適配器上的電線，切勿將電線置於高溫處，請勿用重物壓電線，也不要用力夾或維修電線。
- 如果適配器上的線受損，插座鬆了，請停止使用。
- 如果出現異味、噪音、非正常發熱，則說明產品或適配器有了故障。請迅速將適配器插頭從電源插座上拔出，同時停止使用。
- 請勿將適配器置於水中或粘水使用，也不要將適配器存放在潮濕的地方，如浴室、更衣室、溫室等。
- 為確保衛生，每次使用後必須將水箱中的水從排水側完全倒出，以抹布擦拭幹淨。
- 香薰精油或會導致染色，若意外溢出，應立即以抹布擦拭。
- 應利用量杯加水近噴霧機，請勿直接用龍頭澆水。
- 切勿讓噴霧直接噴到家具、衣服或牆壁等。
- 避免置於直接受陽光照射，靠近冷氣機、風扇或高溫等地方。
- 應置於平面位置，不要放在地毯、墊子或不平整的地方。
- 避免置於電器如電視、音箱設備旁。
- 不應覆蓋產品，可能會導致機身內積水而損壞。
- 產品使用時間應以600分鐘（10小時）為上限。
- 長時間工作後，應關閉60分鐘後再啓用，避免超聲波損壞。
- 祇適用於自來水，純淨水。
- 使用中不應移動產品。
- 雙手沾濕時，不要接觸產品，以免發生漏電。
- 應放置於幼兒伸手不及之處，並正確教導小孩不應玩弄產品。
- 產品不適合兒童或對產品缺乏認識和經驗的人士使用。

Arroma Diffuser 香薰機

## 操作方法

1. 請將產品擺正，垂直方向取下上蓋。 如圖 1
  2. 請將 AC 適配器的 DC 插頭通過 AC 線槽插到主體 DC 插座上。 如圖 2
  3. 請用量杯往水箱內加水，請勿超過 500ML，最大水位線，產品使用時，請勿加水。（不得使用溫度過高的水）
  4. 水箱內盛滿水後，垂直滴入香精油。（建議每 100ML 水滴入 0.1ML-0.15ML 精油） 如圖 3
  5. 把上蓋放回，以垂直方向落下即可，旋轉上蓋以調整噴霧口到所需位置。
- 重要事項：開啓使用前必須蓋上上蓋。
6. 將 AC 適配器插頭插到家用電源插座上。
  7. 按“MIST”按鈕，按需要選擇使用時間。（60 分鐘 /120 分鐘 /180 分鐘 /連續噴霧）產品在到指定時間會自動關機。如需立即關掉，請長按“MIST”。 如圖 4
  8. 按下“LIGHT”選擇 LED 燈開啓或調節燈光強度。（強 /弱 /關閉狀態） 如圖 5
  9. 按下“HIQ/LW”可調節噴霧的強度。（強 /弱） 如圖 6
  10. 如長時間不使用，應倒出所有水並置於幹爽地方。
  11. 當電源接通後，香薰機初始狀態為關閉狀態。
  12. 如果水箱內缺水，即使打開 MIST 開關，香薰機也會自動關閉。
  13. 在定時模式下，LED 燈也會依照設置的定時而自動關閉。



Arroma Diffuser 香薰機

## 故障原因

香薰噴霧器未能正常運作時，應先參考下列情況：

如果您感覺到本產品可能出了什麼故障時，請在向我們請求維修前確認如下幾點：	
只要一打開開關，不到一秒鐘時間，香薰機就會立刻自動關閉	<ul style="list-style-type: none"><li>● 請確認容器內是否有裝水？或者水量是否充足？<ul style="list-style-type: none"><li>——請往容器內加水。</li></ul></li><li>● AC 適配器與本產品是否接受？<ul style="list-style-type: none"><li>——請確認本產品與適配器已經接通。</li><li>為證實是否已經接通，請將 DC 插頭再次從本體上拔下來，再往上重試。</li></ul></li></ul>
沒有噴霧或噴霧異常	<ul style="list-style-type: none"><li>● 容器內的水是否太少？或太多？<ul style="list-style-type: none"><li>——請往容器內加水。 / 如果容器內的水超過 500ML，霧也可能會出現異常。</li></ul></li><li>● 超聲波霧化片是否被玷污？<ul style="list-style-type: none"><li>——請清洗容器。（請參閱“保養方法”）</li></ul></li><li>● 底部的吸氣口布滿塵埃？<ul style="list-style-type: none"><li>——如果底座上的進風口粘滿了灰塵，那麼抽風量將大為減少，從而導致沒有足夠的風力將霧量噴出。</li></ul></li></ul>
香薰機漏水	<ul style="list-style-type: none"><li>● 上蓋是否蓋緊？<ul style="list-style-type: none"><li>——重新裝上蓋。</li></ul></li><li>● 溫度太低或濕度太高？<ul style="list-style-type: none"><li>——如果溫度太低或濕度太高，其表面的霧氣很容易聚集在一起而形成水珠。</li></ul></li></ul>

## 規格

尺寸  
重量  
電壓：輸入 /輸出  
電源線長度  
功率  
預計時間  
水箱容量  
LED 燈  
原材料  
配件  
超聲波頻率

直徑 168 X 高度 121 MM  
約 520G  
AC100-240V60.60HZ / DQ24V650MA  
約 170CM  
約 13W  
60 分鐘 /120 分鐘 /180 分鐘 /CN（連續噴霧）  
500ML  
9 個  
PP  
電壓、量杯、說明書  
2.4MHZ

Arroma Diffuser 香薰機

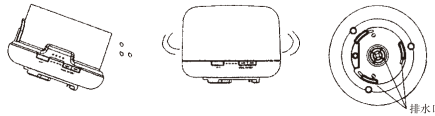
## 注意事項

- 產品使用時間以 600 分鐘（10 小時）為上限。
- 注意噴霧的濃度若稍有差異均屬正常現象。
- 不同類型的水，溫度，氣溫和風行均會對出霧效果造成影響。
- 若水箱內沒有水，按“MIST”按鈕香薰機會發出三下“嗶”聲提示，香薰機在沒有水的情況下不能使用。
- 只適用於 100%純天然香薰精油，若含有化學成分，香薰或雜質可能導致產品損壞。在更換另一種香薰油前，請依照保養部分清理產品。

## 意外洩漏

使用時若意外打翻，請按以下方法處理：

1. 關掉電源，拔掉電源線以及打開上蓋。
2. 把水箱剩下的水從排水側完全倒出。
3. 輕輕搖晃機身，讓機身內積水從排水口排出，置於安全位置24小時自然風幹。



Arroma Diffuser 香薰機

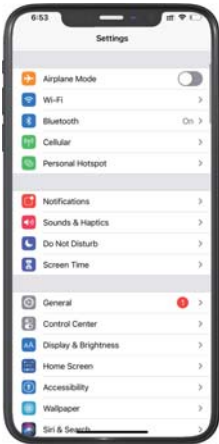
售後服務			
如果您在使用本產品時出現故障或不能正常工作時請與本產品銷售點聯繫更換檢驗合格品。因故障情形不同，有時并非產品質量問題，請在將本產品退回銷售點前仔細閱讀本說明書，謝謝！本說明書不補發，請妥善保管避免丟失。			
產品質量保證書			
維修憑證			
品質保證時間（購買日後一年）			
姓名：	地址：	電話：	日期： 年 月 日
銷售蓋章印		維修記錄：	
在次我們申請本產品經檢驗合格并附上產品使用說明書。		如果本產品在質量保證期內出現故障請帶上產品說明書、本體及整套的配件，一起交給銷售點請求維修，但是如果出現以下任何情形，即使是在保修期內，我們也不能免費維修。	
1. 本產品自身出現故障，依據本說明書，本產品享受一年內免費保修。		1. 本產品出現故障時，購買的時間已經超過了一年，例如，不能提供說明書、銷售點的章印或收據來證明您的購買時間。	
2. 請確認產品質量保證書維修憑證上用戶信息（姓名、地址等）準確無誤，因為這些信息在售後服務中可能會用到，敬請理解。		2. 若有意篡改質量保證書上的日期等相關資料。	
3. 如果因戰爭、地震、火災、颶風、洪水等自然災害造成的故障。		3. 本產品使用時被刮傷、玷污及外觀損壞的。	
4. 因私自拆卸、組裝、維修而造成的故障。		4. 因私自拆卸、組裝、維修而造成的故障。	
5. 因跌落、置水中使用、操作不當或違規使用而引起的故障。		5. 因跌落、置水中使用、操作不當或違規使用而引起的故障。	
6. 將本產品充當其它產品使用而造成的故障。		6. 將本產品充當其它產品使用而造成的故障。	
7. 添加非香精油所造成的故障。		7. 添加非香精油所造成的故障。	

Arroma Diffuser 香薰機

**Bluetooth Connecting Steps**



**Step 1:**  
**Go to the Settings menu**



**Step 2:**  
**Turn on Bluetooth and select "SZTLH"**



**Step 3:**  
**Bluetooth Connected**



Note: When the ios phone is switched to an Android phone, the maximum volume of Bluetooth is determined by the volume of the iPhone when it is disconnected.

#### FCC Warning Statement

Changes or modifications not expressly approved by the party responsible for compliance could void the user's authority to operate the equipment. This equipment has been tested and found to comply with the limits for a Class B digital device, pursuant to Part 15 of the FCC Rules. These limits are designed to provide reasonable protection against harmful interference in a residential installation. This equipment generates uses and can radiate radio frequency energy and, if not installed and used in accordance with the instructions, may cause harmful interference to radio communications. However, there is no guarantee that interference will not occur in a particular installation. If this equipment does cause harmful interference to radio or television reception, which can be determined by turning the equipment off and on, the user is encouraged to try to correct the interference by one or more of the following measures:

- - Reorient or relocate the receiving antenna.
- - Increase the separation between the equipment and receiver.
- - Connect the equipment into an outlet on a circuit different from that to which the receiver is connected.
- - Consult the dealer or an experienced radio/TV technician for help.

This device complies with part 15 of the FCC Rules. Operation is subject to the following two conditions: (1) This device may not cause harmful interference, and (2) this device must accept any interference received, including interference that may cause undesired operation.

#### RF Exposure Statement

To maintain compliance with FCC's RF Exposure guidelines, This equipment should be installed and operated with minimum distance of 20 cm the radiator your body. This device and its antenna(s) must not be co-located or operation in conjunction with any other antenna or transmitter.